

September 2024

Bermuda Collectors Society Mail Sale

**Closing 5:00PM Saturday
October 19, 2024**



Lot 118 - Rare Green CM23 'RELEASED by Censor' shield on cover to Guatemala. Reserve \$200

BERMUDA COLLECTORS SOCIETY
AN AFFILIATE OF THE AMERICAN PHILATELIC SOCIETY
WWW.BERMUDACOLLECTORSOCIETY.COM

BERMUDA COLLECTORS SOCIETY MAIL SALE

**CLOSING 5:00PM SATURDAY
OCTOBER 19, 2024**

MAIL BIDS TO: John Puzine, 13147 Preserve Court, Port Charlotte, FL 33953-4702, USA

EMAIL BIDS TO: puzine@comcast.net

TERMS: This is a members-only mail auction. All bids are confidential and the highest bid wins at the reserve or one step above the second highest bid. With ties, the earliest highest bid wins.

RESERVES: The price shown is the reserve – **bids below the reserve will not be accepted.**

BIDDING & BIDDING INCREMENTS: Only bids from members in good standing will be accepted. All bids are in US Dollars. Bids accepted in EVEN DOLLARS only. Bids with fractions (ie: \$5.50) will be lowered to the next even dollar amount. Email bidders please include your mailing address with bids. Increments will be Winning bid will be one increment above the next highest bid.

BIDDERS: At the end of the sale winning bidders will be notified by email or snail mail and items won will be dispatched upon receipt of payment for those items **plus postage**. Winning bidders are expected to pay within TEN (10) days. There is no buyer premium.

DEADLINE: Bids will only be accepted if RECEIVED before 5:00PM, on the closing date. Note that USPS mail service is currently slow, so mail early or preferably email bids.

PAYMENTS: Payments MUST be in **US Dollars** via a check drawn on a US bank or by PayPal in US Dollars. We **cannot accommodate credit cards, cash, nor payment in foreign currency.**

PAYPAL: When paying by Paypal please use this email: bermudacollectors@gmail.com and ensure you email John Puzine the Paypal confirmation.

WEBSITE: The auction listing will be posted on our website (bermudacollectorsociety.com).

SCANS: Bidders should email John Puzine (puzine@comcast.net) for any scans.

AUCTIONEER'S DISCRETION: The decision of the auctioneer in any disputes is final.

BERMUDA STAMPS

1865-1904 QUEEN VICTORIA

- 1 QV 1d carmine with VF, well struck Pembroke West/SP 25 1899 cancel (missing "PE", "ST" and bottom "Bermuda"). A great strike on a small stamp (BCS Catalog at \$125) \$75

1902-1909 DOCK

- 2 1/2d Docks, Green, S.G. #36 in a gutter block of six. Gutter pairs of the Docks stamps are rare. Crease in gutter not affecting stamps. This is a nice appearing block with slight amount of gum toning. F-VF. S.G. Catalogue £25 each as singles. \$50

1910-1935 CARAVEL

- 3 1d Caravel imperf stamp-size plate proof card in Blue with Specimen overprint. Very eye appealing and rarely found. \$90

1920-1921 TERCENTENARY

- 4 2nd KGV Tercentenary SPECIMEN set (SG 68s-76s catalogs £350) in VF condition. \$125

1918-1937 KGV HIGH-VALUE

- 5 1918 KGV 2/- to £1, MINT set of 6, F-VF, Hinged. \$250
- 6 1924-32 KGV keyplates: 2/-, 2/6, & 10/-, F-VF Mint hinged. The 10/- with #52A flaw \$80
- 7 1927-32 KGV 2/6 Used reference collection (SG89+) on album page noted at bottom "All ex-Dickgiesser" with each stamp identified by printing and paper, a total of 9 stamps, the MAR 30 represented by a faded, cleaned fiscal with forged cancel (n/c), the AUG 32 printing represented by a very nice genuine postally used example (£3,000). All appear F-VF \$475
- 8 1932 KGV 12/6, MINT VF OG hinged, with #45Ai flaw, S.G. £ 900. Scarce. \$250
- 9 King George V, Ten Shilling keyplate with #24 flaw (break in crown & scroll). 1931 printing, 89gf. Hinge remnant, F-VF. S. G. Catalogue value £700 \$300
- 10 King George V, Twelve Shilling, Six Pence, REVENUE-REVENUE. VF, hinged, with toned gum as is normal for stamp being in Bermuda. S.G. # F1, October 1936 printing. S.G. Catalogue value £1,100 \$500
- 11 King George V, Two Shilling keyplate with #54 flaw (damaged leaf, bottom right). June 1920 printing, SG # 51bf. Hinge remnant, F-VF. S.G. Catalogue value £275. \$100
- 12 King George V, Two Shilling, Six Pence keyplate – corner copy with selvage, and #12 flaw (break in scroll). SG # 1931 printing, 89ja. Hinge remnant, F-VF. SG £450. \$200
- 13 King George VI, Twelve Shilling, Six Pence, perf. 14, LEMON-YELLOW shade. VF, lightly hinged, S.G. #120d, June 1946 printing. Catalogue value £ 700 \$325

1937-1953 KGVI HIGH-VALUE

- 14 1938-46 KGVI keyplates: 2/- to £1. Set of six values. Perf. 14, MINT, VF hinged. \$125
- 15 1941 KGVI 2/- Line Perf, Very Fine, used. \$25
- 16 1942 KGVI 2/6 Line Perf FVF used, BSC Cat. \$125 \$25
- 17 1942 KGVI 2/6 Line Perf MINT Very Fine NH, BCS Cat. \$600. \$150
- 18 1952 KGVI 2/- to £1, Perf. 13, USED set of 6, marginal, all with bold "Devonshire South" SON "5 AP 52" cancels. very fresh and bright. \$150

1970 ONWARDS

- 19 1996 QEII \$22 Express Postage (keyplate), Very Fine, MINT NH, SG E1. \$25
- 20 QEII \$25 Express Postage, VF MINT NH, btm margin, SG E2. \$30

MISC / BACK OF BOOK

- 21 Bermuda Back-of-Book stamps: 4 values of Bermuda Contributory Pensions Insurance Stamps (R21, R22, R23, R24) and Customs Inspection label from 1959. \$10
- 22 Mint, NH, coil strip of ten Bermuda Registration Labels, numbered 003991 to 004000. These were used at 'G.P.O. Hamilton Bermuda' in the 1990s. \$100

BERMUDA POSTAL HISTORY

1865-1904 QV COVERS

- 23 Lot of 6 QV items: Four small covers franked w/ blue 2 1/2d stamps, plus two PS cards, one 1/2d & other 1d. Cancels noted: Hamilton, St. Geo, Ireland Isl. Flatts. Cond average for period. \$25

- 24 Lot of 6 QV small covers. Four with orange 4d stamp; one with one 1/2d and two farthing ovpts; other Registered with blue 2d and blue 2-1/2d stamps. Cond average for period. \$25

- 25 Lot of ten small covers with Queen Victoria frankings. Noted: 1d, 2d, 2-1d plus 1/2d "per Orinoco", 4d, six with 2-1/2d blue, one of which is a mourning cover. Average condition. Nice lot. DONATION LOT \$20

- 26 QV 2 1/2p (2) tied by Hamilton Jan 31, 1901 cds on dbl rate cover to the British Consul in Buenos Ayres, Argentina (NY Transit) care of S/S Hollywell Ship Captain. Some minor edge faults. \$90

BERMUDA POSTAL MARKINGS

- 27 Bermuda catering PPC of Cedar Ave with 1d Dock tied by very scarce K4 reintroduced #15 duplex in use under 2 years, with date partial, but endorsed as used on Feb 29 1908. \$50

- 28 Collection of 55 QV numeral and postmark cancels on stamp. All different. Includes obliterations K1, K2, K3, K3a, K4, K4a, PM4, PM5, H1,2,3,4, P5, H5 etc. Lovely selection and some better offices. A great starter lot. \$75

- 29 May 1938 cover featuring pair of Scott 120 for proper double postage & Docks Hamilton H12b date stamp, on Princess Hotel Stationary. Post office location in use 1933-1939. \$20

- 30 Pembroke West postmark B Cancel September 6, 1899 on 1d Rose Red. This is a very rare Bermuda Post Office cancel known from early 1896 to 1904. For more information see Bermuda Post, March 1999 Issue 50, page 3. \$75

- 31 Six philatelic local war tax franked covers all sent to the American Consul during Oct 1925 from Crawl, Harrington Sound, Somerset Bridge, Warwick West, Paget East, and Paget West. \$30

INSTRUCTIONAL MARKINGS

- 32 1d Caravel on local cover to Pembroke with black CANNOT BE FOUND handstamp. Machine cancel dated June 12 1928. Scarce cancel. \$75

- 33 St Kitts Air Letter dated December 18, 1952 to England with red MISSENT TO BERMUDA handstamp in red and Hamilton 20 December 1952 backstamp. \$25

POSTAGE DUES

- 34 Unusual incoming cover to St George's with US 2 cent strip of 3 tied by Boston Feb 22, 1909 cds with 2 strikes of the Bermuda small double oval "2" due mark in black. Minor corner piece missing at LL away from all marks and stamps. Scarce double rate usage of this due mark. \$35

1902-1909 DOCK COVERS

- 35 Lot of seven (7) items franked with Docks stamps. Three covers and four small PPC's. Cancels noted Hamilton, Mangrove, Devonshire, Ireland Isl, St. Geo. PPC's have good images. Condition average for period. \$15

1910-1935 CARAVEL COVERS

- 36 2 1/2d blue tied by NYC May 25, 1932 Paquebot cancel and with POTHIS violet h/s on a XMAS size cover commercially used to Supervisor at AT&T in NY with corner label of "The Netherlands" and with US due mark and two 3 cent US due stamps tied by Albany cancels. \$30

- 37 Caravel full set of 10 values, at the time, all tied by Ireland island 13 AP 35 cds on OHMS envelope used locally to Surgeon Commander Bevis at "I.I.". Philatelic, but a nice full set local usage \$25

- 38 Long Registered (Hamilton) Caravel cover. Franked with 8 different value Caravels up to the 6d. Typed "Via Dirigible LOS ANGELES" on front. Hamilton cancel 25 FEB 25, however, there was no return flight in February. Bs N.Y. March 12, 1925 so it undoubtedly went by ship. \$10

- 39 Lot of eight (8) small Caravel franked covers. All but two with multiple franks and all with Hamilton cancels. One registered. Multi-colored lot. Condition average for period. \$15

- 40 Lot of seven (7) small Caravel franked covers. Two with single franks – the rest multiples, including blocks. Cancels noted: Hamilton, St. Geo, Crawl, & Somerset Bridge and all with Hamilton cancels. One registered. Multi-colored lot. Condition average for period. \$15

- 41 Mixed lot of eight (8) small Caravel and one (1) KGV items (2 are PPC's). Some multiple frankings, one DUAL franking (with 2c US), one partial WW1 censor handstamp. Average condition. DONATION LOT \$10

- 42 Pair of long Caravel franked covers. One with block of 4 of the 1d value, the other has eight different values up the 6d. \$10

The start price is the reserve price. Auction closes 5pm EST Saturday October 19, 2024.

43	PPC of Lily field and house. Franked with two different shades of the 1d Caravel. Stamps have a Paget West cancel, but indistinct date.	\$5	62	Lot of twenty-two (22) KGV covers, eight are #10. Variety of definitive & commemorative frankings, and cancels. Noted: Hamilton, Paget, St. Geo, Mangrove. Couple are FDC's. Average condition. DONATION LOT	\$10
	<u>1920-1921 TERCENTENARY COVERS</u>				
44	First issue: Three small covers & 3 PPC's. Note one purple Hamilton machine cancel, and one OHMS from "Engineer-in-Charge/Channel Works" (scarce OHMS origin). One PPC with 1/2d Caravel added to commemorative.	\$15	63	Two covers: 1 short, 1 #10 env. Each franked with a 2/6d keyplate (SG 117b). Short has St. Geo cancel 3 MAR 43 (probably Dec '41 pntg.) long with Hamilton cancel 13 AUG '49 cancel (probably June '48 pntg).	\$30
45	Second issue: Five small covers & 3 PPC's. Values noted 1/2d, 1d, 4d. Destinations: U.S., Canada, England. Average condition.	\$15		<u>1960 ONWARDS COVERS</u>	
	<u>1935 KGV SILVER JUBILEE COVERS</u>		64	1970 set of 6 coin/stamp FDC's (1c, 5c, 10c, 25c, 50c, \$1.00) by "99 Cent Company". Each with a Moongate cut-out with new coin & Architecture stamp(s) commemorating the change to decimalization. \$1 coin is a SILVER PROOF	\$50
46	1935 Silver Jubilee FDC, set on 3 covers, "HMS Danae" cachets, cancelled 5/6/35 "Warwick East" Very Fine.	\$25	65	1970 set of five coin/stamp FDC's (1c, 5c, 10c, 25c, 50c) by "99 Cent Company". Each with a different color stylized cut-out with new coin & Architecture stamp(s) commemorating the change to decimalization.	\$20
47	Very nice lot of seven (7) Silver Jubilee items. Four small covers. Three are Registered, one of those is Paget with complete set of 4. Another with block of 2-1/2d plus good 2d Yacht Lucie (brown). Three PPC's with 1-1/2d stamp, one of those with Harrington cancel.	\$10	66	1970 set of five coin/stamp FDC's (1c, 5c, 10c, 25c, 50c) by "Post-Marked History". Each with a rectangular cut-out with new coin & Architecture stamp(s) commemorating the change to decimalization	\$30
	<u>1935 KGV CORONATION</u>		67	FDC of \$25 Express Postage (Queen's head) on small #6 cover with private emblem & map cachet. Small "DES Ltd." In bottom right corner. Cancelled "I.D.E. G.P.O./Bermuda". Official FDC's were not produced.	\$25
48	Lot of eight (8) May 14, 1937 Coronation small FDC's. Two Registered (Hamilton), two Mangrove Bay, one St. Geo, one commercial (window). Less than \$1 apiece.	\$5	68	Lot of seven (7) small covers, 5 with definitives, one Perot comm., one UPU comm. Average condition. DONATION LOT	\$5
	<u>1936-1953 KGV & KGV PICTORIAL COVERS</u>			<u>1913-1970 MACHINE CANCELLATIONS</u>	
49	Hoard of seventy (70) KGV items: Two to 'Ludington', a few censored, many multiples, misc. seals attached, five PPC's-one with brown 2d yacht Lucie. Cancels noted incl. Hamilton, St. Geo, Paget, Somerset, Devonshire, Warwick, Mangrove, Ireland Isle. Airmail GPO. An instant KGV collection.	\$30	69	February 11, 1921 postcard featuring MH1a (purple) light machine cancel with Scott 67. This machine cancel / ink combination had limited use in February 1921.	\$50
50	Lot of eight (8) covers, all with multiple KGV definitives. 2 long Registered (incl. FDC), 4 short. A variety of colors per cover, and very attractive.	\$5	70	June, 16 1967 cover featuring MH16 Machine cancel (30th Anniv. Air Service) with Scott 177, 3d Architecture definitive. (Government variety). This machine cancellation was only used for 1 day.	\$25
51	Lot of six (6) items franked with KGV definitives. Three long env, incl a FDC, another with 6 values, and third with silver Jubilee, small FDC with 4 values, small with 2-1/2d, and a PPC (Swedish, American Ships) with 1-1/d.	\$5	71	November 9, 1948 postcard featuring MH11 machine cancel (I.A.T.A. Conference) with Scott 109a. This machine cancellation was only used for 12 days.	\$30
52	Lot of sixteen (16) small Navy related covers. Including: Destroyer cachet, 1934 "Navy Day", HMS Danae Reg. (Warwick East) with all Silver Jubilees, HMS York, USS MacDonough, USS Case (3), HMCS Halifax (July 1993), 1996 HMS Boxer (addressed to R.W. Dickgiesser), plus four cacheted covers having U.S. Base cancels.	\$10		<u>1899-1902 BOER WAR</u>	
53	Lot of thirty-one (31) KGV covers: 7-1/2d airmail, two with block of 4 (1 FDC, 1 Reg.) plus others. Also, 2-1/2d, 3d, 6d, 1/-, Perot and UPU issue. Cancels noted incl. Hamilton, St. Geo, Mangrove, Southampton, Crawl.	\$20	72	Bermuda CM4 on cover dated April 9, 1902 to South Africa with 1 1d Bermuda QV. Censor mark partially obscured by receiving postmark but still clear. Also boxed rectangular SA Censor Mark on front. Bermuda Cat \$600.	\$125
54	Three long "Peace" issue FDC's franked with both values in blocks of four with cylinder numbers. Two with 1B & 1B, one with 59B & 60B. All addressed to Hamilton. Unusual to find.	\$5	73	Bermuda CM4 on cover dated May 14, 1902 to Germany with 2 1/2d Bermuda QV. Censor mark partially obscured by postmark but still clear. Covers to Germany are not common. May 27 b/s. Bermuda Cat \$600.	\$125
	<u>1937-1953 KGV COVERS</u>		74	Blue Bermuda CM1 on toned cover dated Sept 28, 1901 to Netherlands with 2 1/2d Bermuda QV. Lovely clear example of this marking. Oct 10 receiver on reverse. Bermuda Cat \$150.	\$75
55	1943 cover (#10 env.) to England. Franked with 1/6d and 2/- keyplate (SG 116c, Oct. '41 pntg) with Hamilton 25 JAN 43 cancel.	\$15	75	Incoming Sep 12, 1901 Ceylon Boer War censored POW cover originally sent to South Africa & then manuscript "Bermuda", "Not Belle View", and "Not Hawkins". A scarce forwarded intercamp POW usage to Bermuda! Part of backflap missing.	\$100
56	1953 cover (#10 env.) to England. Franked with 7-1/2d airmail stamps plus a 2/6d keyplate (SG 117b, probably June 48 pntg) with Hamilton 22 JUN 53 cancel.	\$20	76	Perfect strike of Bermuda CM3 on cover dated May 7, 1902 to Cape Town with 1d Bermuda QV. Cover has repaired tear on front but hardly detracts from the stunning Censor Mark. June b/s. Bermuda Cat \$800	\$125
57	1953 KGV 2/6 Perf.13, OHMS cover to Canada, 'His' crossed out, "Her" typed in, unusual, Very Fine.	\$35	77	Purple Bermuda CM2 on lovely cover dated April 12, 1902 to Holland with 2 1/2d Bermuda QV. Lovely strike of this marking and arrival backstamp of April 29. Bermuda Cat \$600	\$125
58	Attractive 1943 Registered & Censored long cover. Franked with all (9) KGV low values, plus one 2/6d keyplate (Sg 117, probably Oct 1940 pntg). P.C. 90 censor label ("C/8142) applied to back. Bermuda cancels smudged, but bs N.Y. Nov 20, 1943	\$30	78	Purple Bermuda CM2 on toned & slightly tatty cover dated April 9, 1902 to Pretoria with 1d Bermuda QV. Nice strike of this marking with triangular 'Passed Press Censor Pretoria' on front as well. Bermuda Cat \$600.	\$100
59	KGV 2/- Mottled on small Registered cover to Canada, 8/19/43 with CM21 #4 censor, Very Fine.	\$30	79	September 28, 1901 cover (toned) addressed to France with black Hamilton H7 CDS and blue CM1 Boer censor handstamp. 2x 1p plus 1/2p stamp for postage. Paris receipt marking October 1,1901 on reverse.	\$150
60	Lot of fifteen (15) small covers, all with KG VI 1/2d green. One from "Bowie" sent to Watouga Okla. with "missent" handstamp. Other 14 are identical, local, covers most to Bailey's Bay with backstamp - mailed different 1947, 48, 49 dates. Good condition. DONATION LOT	\$10		<u>1914-1919 WWI CENSORSHIP</u>	
61	Lot of twenty (20) KGV covers, four are #10. Variety of definitive & commemorative frankings, and cancels. Noted: Paget, Ireland Isle. Hamilton, Mangrove, Air Mail GPO. Couple are FDC's. Average condition. DONATION LOT	\$10	80	Purple CM11 with light 'HW' on cover to Philadelphia dated August 28, 1914. Mark believed to be Harry Watlington or possibly Henry Wilkinson. The most common of the CM11 initial marks. Light or partial cancels of this mark are usual. Bermuda Cat \$175.	\$50

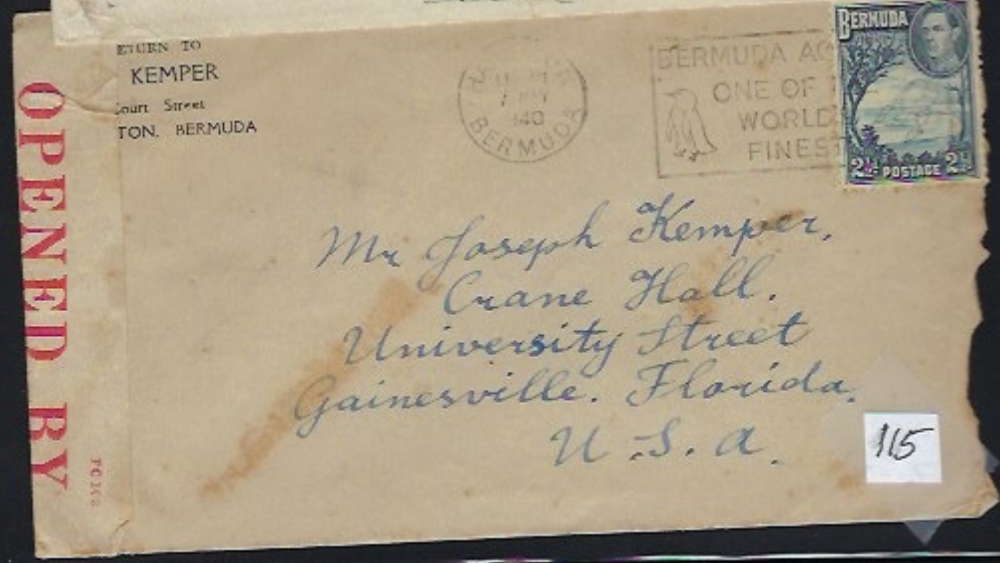
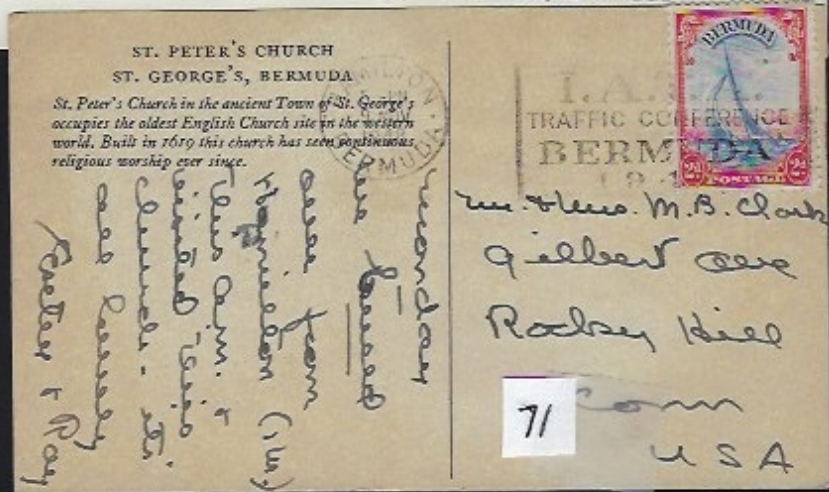
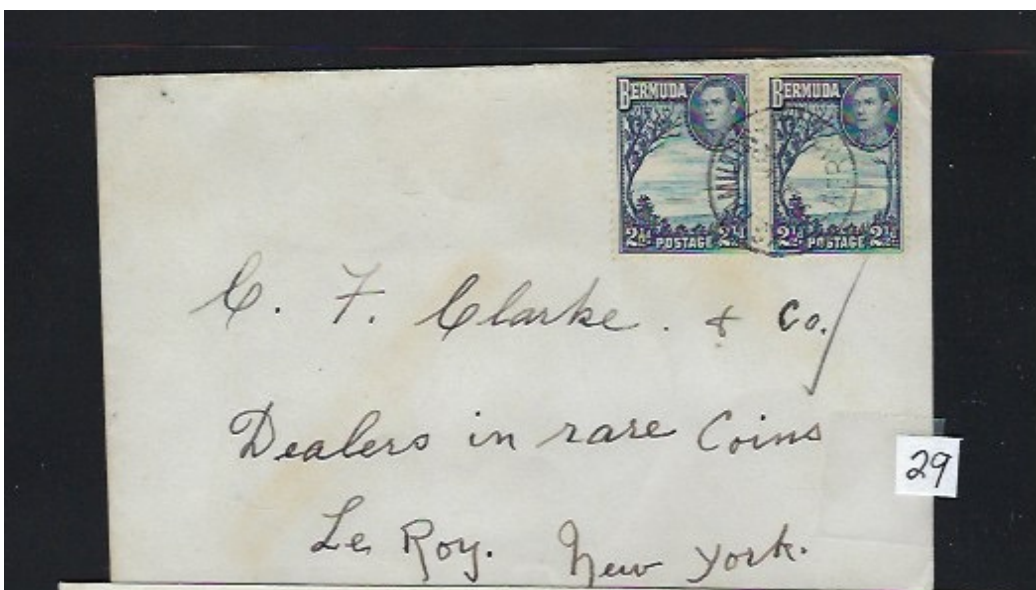
The start price is the reserve price. Auction closes 5pm EST Saturday October 19, 2024.

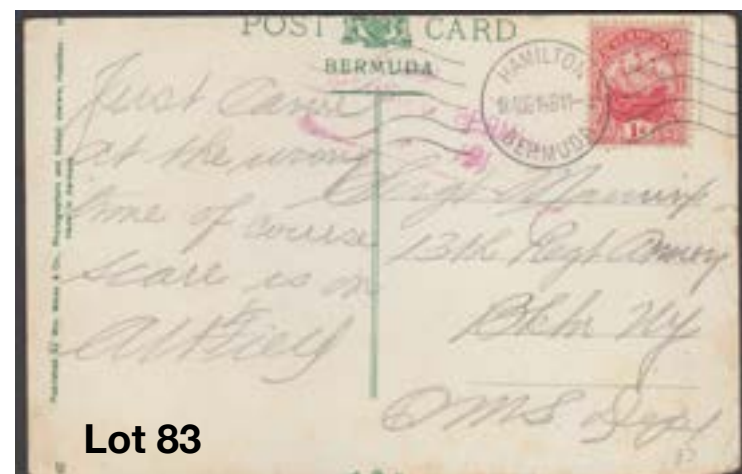
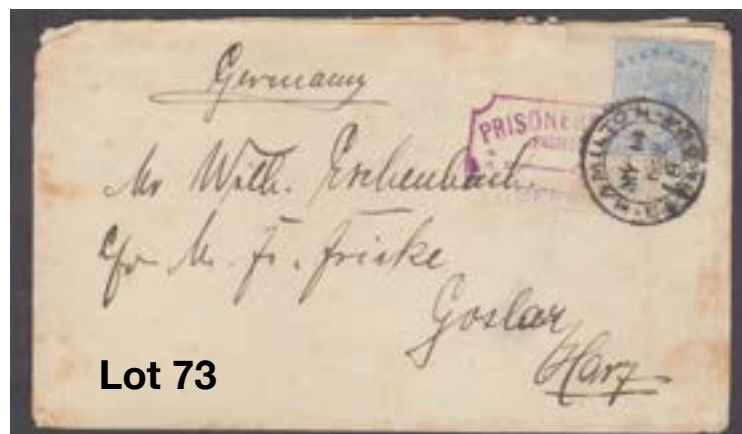
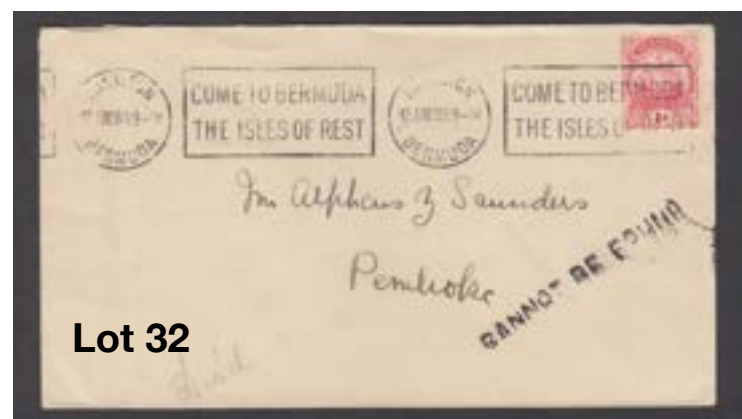
81	Purple CM11 with likely faint 'JHD' on local postcard to New York dated August 29, 1914. John Hill Darrell was a prominent Bermuda Businessman, turned censor. Light or partial cancels of this mark are usual. Bermuda Cat \$175.	\$75	108	Collection of 15 Blue CL3 Bermuda Terminal Censor labels. All different numbers. Bermuda Catalogue value is \$525.	\$175
82	Purple CM11 with part 'WRW' on postcard dated August 10, 1914 to New York. William Robert Winter was the Chief Censor. Winter was on leave from August 22-mid September and this CM11 marking is rare as such. Light or partial cancels of this mark are usual. Bermuda Cat \$175.	\$60	109	Collection of 20 Blue CL4 Bermuda Terminal Censor labels. All different numbers. Bermuda Catalogue value is \$700.	\$250
83	Purple CM11a on postcard to New York dated August 18, 1914. Light or partial cancels of this mark are usual. Bermuda Cat \$250.	\$80	110	Green CM21 #38 on long International Match Realization Company cover to Grand Rapids. Dated March 6, 1944. Middle crease and some side toning but does not detract from lovely strike of this rare mark. Bermuda Cat \$500.	\$90
84	Purple light/part CM12 on postcard to New York dated October, 1914. Light or partial cancels of this mark are usual. Bermuda Cat \$400.	\$125	111	January 1, 1940 CM21 censor (#14, violet) with MSG1 machine cancel and Scott 119.	\$125
85	Red CM11 with partial/light 'JPH' on postcard to New York dated August 7, 1914. John Pierce Hand was an importer of tobacco products, turned censor. Hand was on leave between August 24-30 and he resigned September 14. Light or partial cancels of this mark are usual. Bermuda Cat \$200.	\$80	112	KGVI 1/2d tied by St Georges 24 Jan 41 cds on Bowie unsealed letter rate to NYC with VF CM21 censor #48 in blue on reverse initialed by the censor (looks like "HB"). Unusual that a censor would bother with a printed matter item sent in an unsealed envelope! Tiny tear at top middle.	\$90
<u>1939-1945 WWII CENSORSHIP</u>					
86	Bermuda Transit Censor CL2 #107 on 28 August 1940 slightly tatty cover from Switzerland to Washington.	\$75	113	KGVI 7 1/2p rate tied by St Georges 23 Aug 43 cds on censored (Bermuda PC 90 C/8142 label) reg. ship rate cover to S. Rhodesia (b/s Dec 20th) with m/s red ink on front reading "Unclaimed/Return to Sender/PTO" & with Trinidad Mar 14 44 transit cds on way back to Bermuda. Amazing trip!	\$35
87	Bermuda Transit Censor CL2 #131 on 29 August 1941 slightly toned cover from Portugal to New York.	\$100	114	Lot of eight (8) small censored covers each with CM21 marks used by P.O. censors. Noted #2 (3); #3 (1); #4 (2); #9 (1); Incoming(1) from U.K. with #23 used 5 months after closure of the St. George's office. Great CM21 starter lot.	\$30
88	Bermuda Transit Censor CL2 #140 on 25 September 1940 slightly folded cover from Boston to Germany.	\$100	115	May 7, 1940 CL2 (Red) censored cover (#78) with MH6 machine cancel and Scott 120. Lower right of envelope semi-rough, but does not detract from the censor label, cancel, or stamp.	\$75
89	Bermuda Transit Censor CL2 #148 on 26 October 1940 slightly folded cover from New York to France.	\$125	116	Mixed lot of twelve censored covers each with CM21 marks used by P.O. censors. Noted #'s ; 2, 3, 8, 9, 23. A couple long, a couple incoming, rest assorted sizes. DONATION LOT	\$15
90	Bermuda Transit Censor CL2 #151 on 14 September 1940 lightly folded cover from New York to Sweden.	\$125	117	Pair of Registered CL2 (#78 & #80) Registered 'Bowie' covers from Ireland Island and St Georges Bermuda to Los Angeles and Florida. KGVI 1d & 1d o/p used to make up the 6d rate on each.	\$50
91	Bermuda Transit Censor CL2 #219 26 October 1940 on lightly folded cover from New York to Italy. Punch holes at left. Second highest number known.	\$150	118	Rare Green CM23 'RELEASED by Censor' shield on cover to Guatemala. Dated December, 1942. A rare censor mark. Bermuda Cat \$500.	\$200
92	Bermuda Transit Censor CL2 #56 on February 26, 1940 long cover from Angola to New York. Attractive multi colour franking.	\$55	119	Sep 9, 1941 reg censored cover from Istanbul, Turkey to San Francisco with PC 90 OBE 453 censor label and red Bermuda transit number "39417" on reverse. Turkey origin transit covers to the USA rarely had Bermuda markings, as many were routed through the UK. A very scarce origin.	\$40
93	Bermuda Transit Censor CL2 #57 on 1940 cover from Portugal to New York.	\$65	120	Small Airmail cover to Scotland with CL2 (red) Censor label, franked with 2/- keyplate (SG116a, probably Oct 1940 pntg). St. Geo cancel dated 8 JAN 41.	\$25
94	Bermuda Transit Censor CL2 #58 on 1940 cover from Portugal to Toledo.	\$65	121	Two small covers to U.S. each with a CL2 (red) Censor label, PLUS a CM21 mark. One 1939 from Hamilton with CM21-#3 mark, another 1940 from St. Geo with CM21-#23 mark. Nice dual censored pair.	\$20
95	Bermuda Transit Censor CL2 #60 on June 20, 1940 cover from Portugal to New York.	\$65	122	U.S. Prexie 5 cent tied by NY Oct 26, 1940 cancel to German occup. Paris with CL2 PC 102 Red label #107 & French "Retour" 3-line h/s & large 2-line US "Return to Sender/Service Suspended" h/s in violet returned almost a year later NY Sep 18, 1941 b/s! Few Returned Red Label usages!	\$80
96	Bermuda Transit Censor CL2 #64 on 31 August, 1940 cover from Portugal to New York.	\$65	<u>1919-1970 AEROPHILATELY</u>		
97	Bermuda Transit Censor CL2 #65 on long Registered March 1940 cover from New York to Switzerland.	\$65	123	1931 reg. French Guiana flight cover sent to Hamilton (NY, San Juan, and Miami b/s. This is not an official flight cover to Bermuda, but one tied to the origins of this flight from French Guyana.	\$30
98	Bermuda Transit Censor CL2 #68 on long March 5, 1940 cover from New York to Belgium.	\$65	124	1937 CAVALIER: 17 identical FFC's. Each REGISTERED with boxed red & blue printed cachet (as shown in CW) and red 3-line P.O. handstamp. Franked with a variety of stamps. Clark #'s 37.1b, CW # FF1-A. Clark values at \$50 each for registered, CW values at \$15, no premium for registered).	\$30
99	Bermuda Transit Censor CL2 #92 on cover from Portugal to Michigan.	\$65	125	1937 CAVALIER: Six (6) FFC's. Each with red 3-line P.O. handstamp. Hamilton, St. Geo, and Mangrove cancels, P.O. cancels, one registered. Clark #'s 37.1b, CW # FF1-A. Franking varies and condition varies. DONATION LOT	\$50
100	Bermuda Transit Censor CL2 #93 on cover from Portugal to Pittsburgh.	\$60	126	1937 Very SCARCE Queen of Bermuda/Cavalier flight joint usage franked by US 16 cent air special delivery stamp & air 25 cent tied by Bermuda "Paquebot" cancel, part large Queen of Bermuda/POTHS mark in violet (only half showing) 3-line Cavalier Flight h/s in red with Hamilton 14 June 1937 cds & cancel on back proves special delivery. Less than a handful known.	\$75
101	Bermuda Transit Censor CL2 #94 on August 1940 cover from Greece to New York.	\$65	127	1938 FAM17, Baltimore to Bermuda Flight Cover, Signed by Capt. R.O.D. Sullivan and Six crew members, Very Fine.	\$50
102	Bermuda Transit Censor CL2 #96 on 31 July 1940 cover from Portugal to New York.	\$65			
103	Bermuda Transit Censor CL9A label with 167h. [P.C.90]. April 1941 Portugal to New Jersey. Bermuda Catalogue \$180.00	\$35			
104	Bermuda Transit Censor CL9A label with double letter 167b.b [P.C.90]. August 20, 1941 Switzerland to New York. Bermuda Catalogue \$180.00	\$35			
105	Blue CM21 #24 on long International Match Realization Company cover to New Haven. Dated March 6, 1944 Lovely strike of this rare mark. Bermuda Cat \$400.	\$100			
106	Blue CM21 #27 on large piece (likely off of parcel). Dated August, 1943 Light strike of this rare mark. Bermuda Cat \$200.	\$60			
107	Collection of 100 Different Bermuda Transit Censor Covers. Comprising a variety of types mainly CL5 with some CL7 and CL9 with different label varieties, origins and destinations. A wonderful starter lot and guaranteed to pique your curiosity into this fascinating field. Lots of value at less than \$5.00 per cover. Huge catalogue value.	\$450			

The start price is the reserve price. Auction closes 5pm EST Saturday October 19, 2024.

128	1938 Round Trip Flight Cover, Port Washington, NY to Bermuda to NY, via Bermuda Clipper, #10 size, Cat. # FF5c, Very Fine.	\$30	146	USS LOS ANGELES. Four (4) covers from April 1925 flight. One with "Wrestler cachet, one with Lakehurst machine cancel. Clark #'s 25.2, 25.2b, 25.2f, CW # FS4-A1 & A2, Clark value totals at \$400, CW values at \$140). Note: CW does not value cachets.	\$60
129	1940 First PAA Clipper Flight Cover, Norfolk to Bermuda, Cat. #FF6b, Very Fine.	\$20	147	USS LOS ANGELES. Four (4) covers from April 1925 return flight, each with Bermuda 2-line handstamp cachet. Three with 2-1/2d Caravel, one with 1d Caravel addressed to England. (Clark #'s 25.3a, CW # FS4-B-1-A, Clark values at \$50 each, CW values at \$30 each). Note: Mailed to UK scarce and not valued.	\$50
130	1989 Piedmont Airlines set of 3 flight cover with both the Baltimore and Baltimore AMF cancels on cacheted flight covers (b/s Bermuda) and the Return flight with Bermuda stamp cancelled Air Mail GPO/01 Jun 89/Bermuda and Baltimore b/s. Not many carried (only 270 from Bermuda).	\$30	148	USS LOS ANGELES. Three (3) covers from February 1925 flight (Clark #25.1, CW # FS3-A1, both value at \$75 apiece). Origins: NY, Phil, Wash DC).	\$40
131	April 5, 1966 First Flight Cachet FF23b, with appropriate hand-made artwork. BOAC Mexico – London with a stop in Bermuda. About 10 cachet covers known according to Bermuda Specialized Catalog	\$50	149	USS LOS ANGELES. 4 covers. 2 from Feb flight, 1 from April Return Flight, one apparently not carried sent March 10th, Bermuda bs dated 13 days later. DONATION LOT	\$30
132	Collection of 13 post WWII FFC's on small envelopes. Three Colonial Aug 1, 1947 Wash. & NY to BDA. Three Colonial Aug 1, 1947 Bermuda to Wash. & NY. Two Trans-Canada May 1, 1948 BDA to Toronto. F our March 14, 1969 Northeast Airlines Boston to BDA, One May 1, 1972 BDA to Daytona Beach. Clark \$500+, CW \$160.	\$50	<u>1962-1968 NASA COVERS</u>		
133	Collection of seven (7) FFC's. Four small from August 1, 1947 flights to BDA, and three #10's: one April 6, 1938 to Bermuda with "C of C "cachet, One FAM17 with "Southampton East" bs, One 1948 BOAC "Speedbird". Condition is average for used. DONATION LOT	\$50	150	13 Bermuda NASA tracking station covers, covering 1965 -1973. Included are Gemini (4), Apollo (7), and Skylab (2).	\$50
134	FAM 17 combination franking flight cover originating in Canal Zone with air stamp tied on Feb 26 & US 10 cent air tied by large Baltimore Mar 16 cds. Few recorded originating in Canal Zone!	\$100	151	Mar 16, Mar 23, and Nov 11, 1966 Gemini NASA flight covers with Station labels attached, 2 signed by Station Director, & all with Bermuda stamps. Harder to find these early pre-Apollo covers.	\$25
135	FAM17 Balt to BDA cover with purple PO cachet franked with Plate Block of 12c Grover Cleveland stamps. Signed by Baltimore PM Ernest Green & US PM General James Farley. Very clean & attractive SCARCE cover.	\$25	<u>BERMUDA MISC POSTAL HISTORY</u>		
136	FAM17 collection of 55 covers w/ purple PO cachet. Many interesting frankings inc. Plate #'s, Souv. Sheets, Spec. Del.; 2 signed by Balt. PM; 4 Registered, 2 re-franked & registered at St. Geo; 6 w/ private cachets; 3 w/ 1936 error BS.	\$60	152	Pair of International Reply Coupons used in 1993. 1) Issued Reading Mass. and redeemed in Hamilton. 2) Issued Hamilton and Redeemed in Reading Mass. DONATION LOT	\$10
137	FFC, April 6, 1938 Port Washington to BDA, small envelope postmarked 8:00AM at N.Y. GPO. Clark # 38.4a valued at \$100, CW values at \$20. Handwritten cachet by Mrs. Booker, and addressed to her by. Backstamped St. George's. Clean and attractive.	\$10	153	Pair of International Reply Coupons: Sep 30, 1946 Blue Form 6p with large Hamilton, Bermuda M.O.D. cancel in violet & Feb 18, 1974 Commonwealth Reply Coupon Red Form 3d tied by even larger Hamilton MOD cancel in violet. Not easy items to find, especially the early one.	\$60
138	FFC, June 8, 1939. First acceptance from BDA to U.K. via southern route. Small envelope with handstamp cachet and franked with 1st printing of the KGVI Two Shilling keyplate. Addressed to "J.Stephen" with "Guaranteed" backstamp. Clark #39.4 valued \$150 with keyplate. CW FA6-B ("5 recorded") valued at \$125.	\$35	<u>BERMUDA POSTAL STATIONERY</u>		
139	KGVI 2/- keyplate tied by Sep 28, 1940 Aquarium slogan on uncensored air cover to UK sent to D.R.G. Cameron MBE of the Royal Scots that was then forwarded to the Belgian Reception Camp at Tenby South Wales. These were escaped Belgian soldiers that regrouped in the UK to fight the Germans. Scarce Bermuda tie-in to these efforts, especially sent uncensored!	\$50	<u>BERMUDA NEWSPAPER WRAPPERS</u>		
140	November 1937 Baltimore to Bermuda (PanAM); Bermuda to Baltimore (Imperial) ROUND TRIP cover. Clark #'s 37.2, CW # FF2-A. Clark values at \$200, CW values at \$100. Exactly as pictured in Clark. Scarce cover.	\$25	154	1938 KGVI 1/2d Newspaper Wrapper, Mint, "Specimen", Very Fine, Cat. \$150	\$30
141	November 1937 Bermuda to Baltimore (Imperial Airways) cover. (Clark #'s 37.2a, CW # FF2-B. Clark values at \$300, CW values at \$200). #10 envelope as pictured in CW, opened on two sides. Scarce item.	\$30	<u>BERMUDA LETTERCARDS</u>		
142	Pair of April 2, 1965 FFC's on #10 envelopes. Both have BOAC's "Super VC10" red boxed cachet, and each with different "Buildings" definitive frankings cancelled "Hamilton", and backstamped "Jamaica, NY". Clark #65.2 at \$100, CW # FF21-B at \$40.	\$15	155	1892 QV 1 1/2d x 1 1/2d Reply-Paid, Unused VF SC6 Cat \$250	\$50
143	Two British Airways Concorde First Flight covers, Orlando-Bermuda 10/14/83 and Bermuda- Orlando 10/16/83, both pilot and crew signed, Very Fine.	\$35	156	Set of 3 unused Postal Stationary Cards. SC1 (setting A), SC2 (setting B), SC3 (setting C).	\$50
144	Two British Airways Concorde First Flight covers, Orlando-Bermuda 10/14/83 and Bermuda- Orlando 10/16/83, unsigned, Very Fine.	\$25	<u>BERMUDA REGISTERED ENVELOPES</u>		
145	USS LOS ANGELES. 3 covers from April 1925 return flight, each with Bermuda 3-line handstamp cachet. Two with 2-1/2d Caravel, one with 6d Caravel and error SE INVERTED, franking and error are rare. Clark #'s 25.3b & 25.3bx, CW #FS4-B-2 & FS4-B-2a, Clark values at \$50 ea, & "only 10 known" for error, CW values at \$30 & error at \$125 ea.	\$75	157	1903 Dock 2d Registered Envelope, Unused, small hr's, VF, SR2b, Cat. \$120	\$25
			<u>BERMUDA MISC POSTAL STATIONERY</u>		
			158	Collection of 60 Bermuda Postal Stationery items including incomplete selections of cards comprising QV, Docks, Caravels, KGV, KGVI mint, used, specimen; Formula Envelopes from QV - KGVI in different sizes mint, used & specimen. Selection of Newspaper wrappers mint used and specimen etc. Very little, if any duplication and a great starter lot to build on. High catalogue value.	\$475
			<u>BERMUDA POSTCARDS</u>		
			159	Collection of 200 Bermuda Postcards, all different and lots of variety from different publishers. Look to be from 1910 to 1930s period. Great value at only \$2.00 each!	\$400
			160	Four Black & White Stereopticon Cards, all views of Bermuda, two dated "1904", one "Salt Kettle", one "Gibbs Hill Light", Very Fine, interesting.	\$30
			<u>LUCKY LAST SPECIAL DONATION LOT</u>		
			161	Mystery, surprise DONATION lot. A member has contributed a lot of mixed Bermuda philatelic material. Includes stamps, postal history, and Bermuda collectibles with a retail value significantly HIGHER than the minimum bid. Auction committee considers this a bargain at starting price.	\$100

The start price is the reserve price. Auction closes 5pm EST Saturday October 19, 2024.









Lot 87

