

KGV/VI - Commemoratives

These three frames show the commemorative issues for Bermuda issued during the reigns of King George V and King George VI with two exceptions. The first being the 1920 Victory essays - no stamp was issued, and the second is the final two pages show a selection of the railway stamps privately issued for carrying parcel and goods

The majority of this display is devoted to the 1920/21 Tercentenary issues as this consist of 18 stamps and includes preproduction through the issued stamps with a number of watermark errors.

Bermuda participated in omnibus issues from 1935-1949.

Layout

Items of interest

1920 KGV Victory.	page 2	1920 Victory. Essay
1920 KGV Tercentenary - 1st issue	pages 3 - 22	1920 Tercentenary - 1st issue plate proofs
1921 KGV Tercentenary - 2nd issue	pages 23 - 35	1921 Tercentenary - 2nd issue design essays,
1935 KGV Silver Jubilee	pages 36 - 39	plate proofs
1937 KGVI Coronation	page 40	1935 Silver Jubilee - die proof
1946 KGVI Victory	page 41	1937 Coronation plate proofs
1948 KGVI Silver Wedding	page 43	
1949 KGVI 100th Anniversary of		
Perot stamp	pages 43 - 44	
1949 KGVI 75th Anniversary of UPU	page 45	
Bermuda Railway stamps	page 47 - 48	

**KGV - Commemorative
1920 Victory**

1920 Victory



These two photo essays were prepared to celebrate the Allied victory after World War I, however Bermuda decided not to issue actual stamps

KGV - Commemorative Tercentenary 1920 issue

The Legislative Assembly of Bermuda first met August 1st, 1620; it was proposed that stamps would be issued to celebrate the three hundredth anniversary.

De la Rue were chosen to produce two designs, the first using a design from the governor and the second issued a year later based on a design produce for the Bermuda assembly incorporating emblems of Bermuda designed by H. J. Dale, a local architect.

The first issue value was typographed by DLR with the normal production of die proofs, the second (1921) issue was with engraved plates issue was produced by engraving the plates thus die proofs were not needed.



Before Hardening



After Striking



The stamps were printed in sheets of 60 in two operations one for the vignette and one for the frame. Plate numbers are found above stamps 1 and 5 and below stamps 55 and 60.

KGV - Commemorative Tercentenary 1920 issue

From 1907 to 1948 specimens
were distributed to UPU
members in strips of 3.

First two values (1d
and 2½d) issued on 21
November 1920

Specimen



Seven later values issued
on 19 January 1921

Ex Madagascar archives, Rubin,
Freeland.

KGV - Commemorative Tercentenary 1920 issue

Specimen

Abnormal type D9 which can easily
be differentiated by the wider letters
than found on D12a



Ex Baille

SPECIMEN

D4

SPECIMEN

D9



Ex Baille



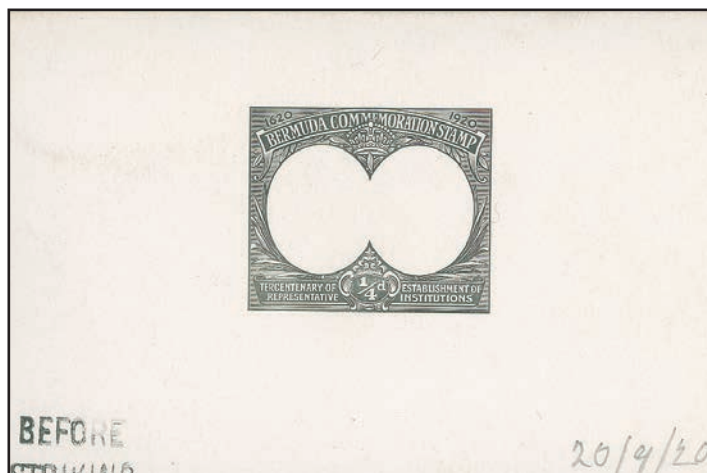
It is thought that the D9 specimen was used to make up for a shortfall of the D12a specimens sent to the UPU in Berne. The D9 has not been recorded on the 1d or 2½d values which would be consistent with Samuels that this specimen stamp was reintroduced in 1921 and these two values were issued in late 1920. .

Group ex Freeland, except 2d ex Watkins, the ½d, 3d, 4d, 6d and 1s are ex Ulrich

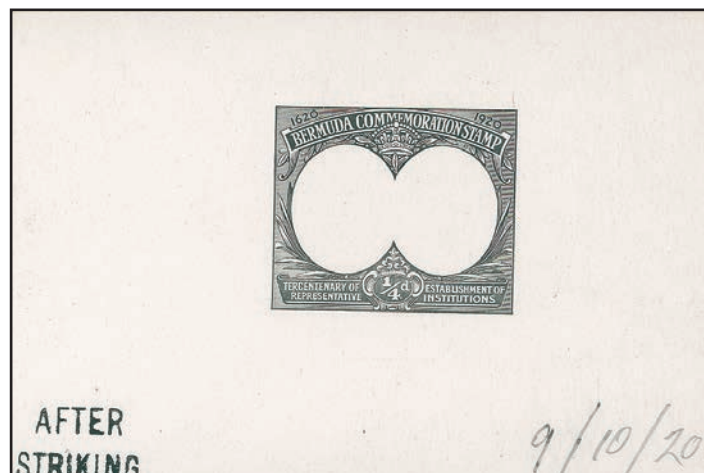
KGV - Commemorative
Tercentenary 1920 issue

One farthing
Two printings
146,140 sold

One farthing



Before Striking



After Striking



Die proof of complete design on
glazed card in black bluish grey

Unique



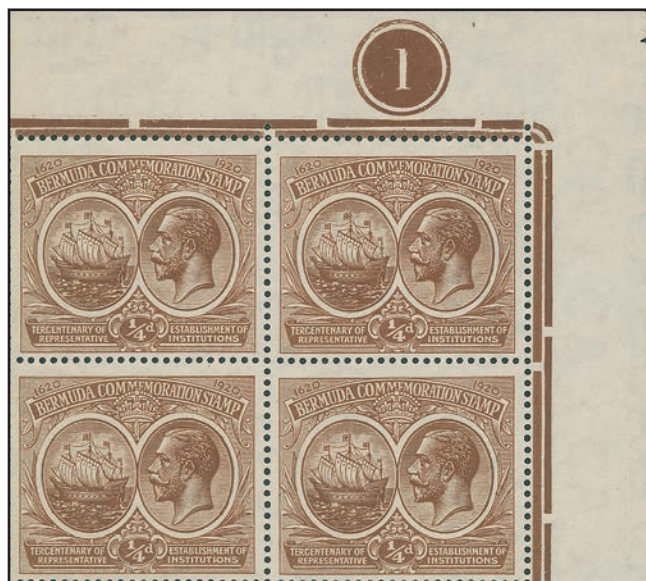
Plate proof
produced in a strip of six
two pairs and two singles recorded



Specimen
Samuel D12a
pair

KGV - Commemorative Tercentenary 1920 issue

One farthing



Watermark - Multiple Crown and CA

The normal sideways watermark has the Crown to the left of the CA as seen from the back of the stamp.

All possible varieties are recorded and shown below.



A of CA
missing



C of CA
missing



Crown to right
of CA



Wmk
reversed



Wmk inverted
and reversed

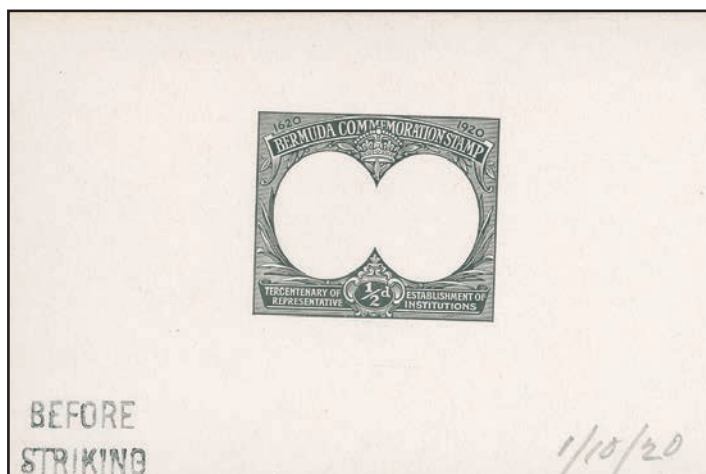


Both blocks are missing the "A" in margin. The dandy roll for the postmarks were missing the letters which appear in different positions on the printed sheets

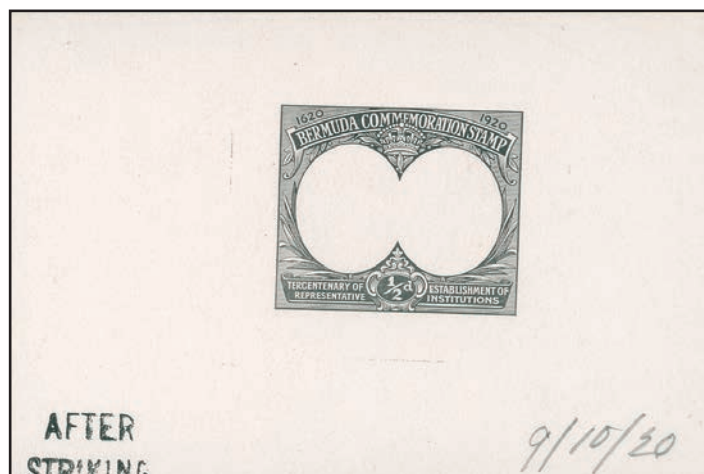
KGV - Commemorative
Tercentenary 1920 issue

Halfpenny
One printing
147,620 sold

Halfpenny



Before Striking



After Striking



Plate proof
produced in a strip of six
two pairs and two singles recorded



Specimen
Samuel D12a
pair

Watermark - Multiple Crown and CA

The normal sideways watermark has the Crown to the left of the CA as seen from the back of the stamp.
All possible varieties are recorded.



Crown to right
of CA



Wmk
reversed

KGV - Commemorative
Tercentenary 1920 issue

Halfpenny

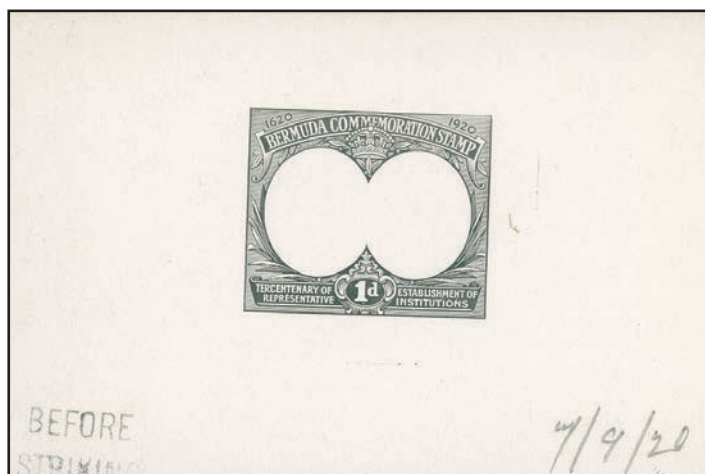


21/2d foreign rate cover to Sweden

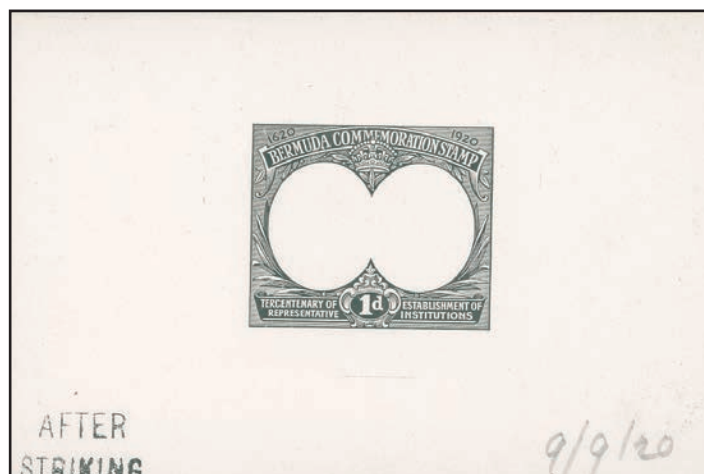
**KGV - Commemorative
Tercentenary 1920 issue**

One penny
One printing
972,840 sold

One penny



Before Striking



After Striking



Plate proof
produced in a strip of six
two pairs and two singles recorded



Specimen
Samuel D12a
pair

Watermark - Multiple Crown and Script CA

The normal sideways watermark has the Crown to the left of the CA as seen from the back of the stamp.
Inverted, and inverted and reserved errors are also recorded.



Wmk
reversed

KGV - Commemorative
Tercentenary 1920 issue

One penny



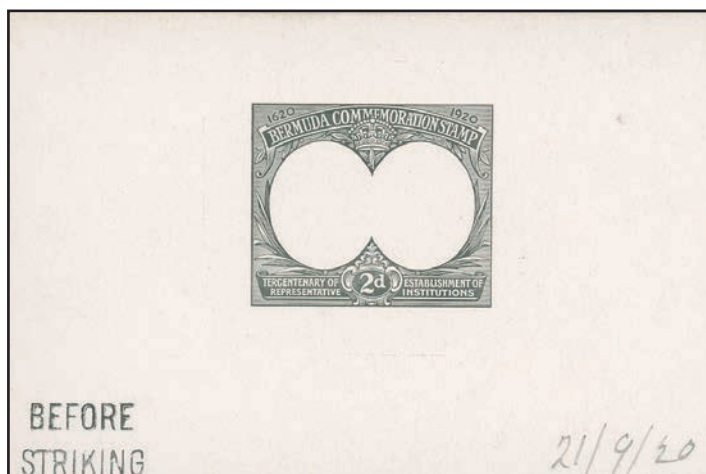
1d postcard rate.

Purple cancellation used for 20 days from 5th to 25th February 1921.

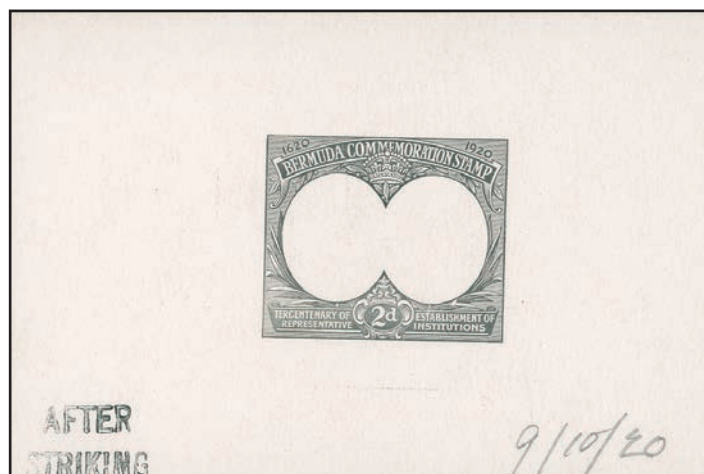
**KGVI - Commemorative
Tercentenary 1920 issue**

Two pence
One printing
44,800 sold

Two pence



Before Striking



After Striking



Plate proof
produced in a strip of six
one pair and three singles recorded



Specimen
Samuel D12a
pair

Watermark - Multiple Crown and CA

The normal sideways watermark has the Crown to the left of the CA as seen from the back of the stamp.
Missing "C" and inverted and reversed are also recorded.



Crown to right
of CA



Crown to right
of CA

KGV - Commemorative
Tercentenary 1920 issue

Two pence

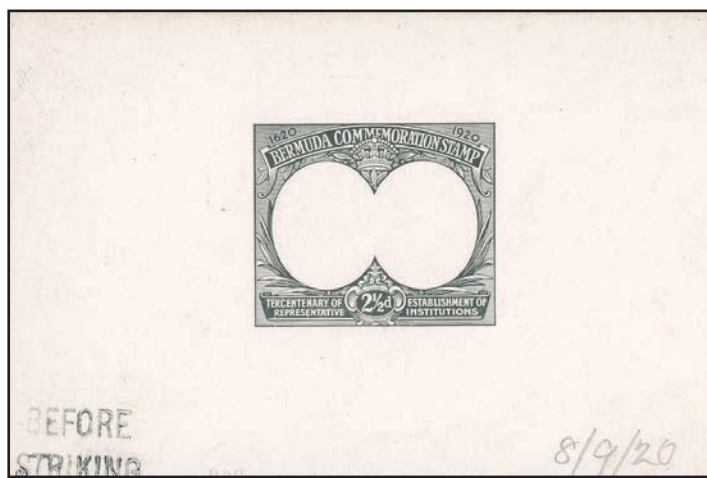


2½d foreign rate cover to California

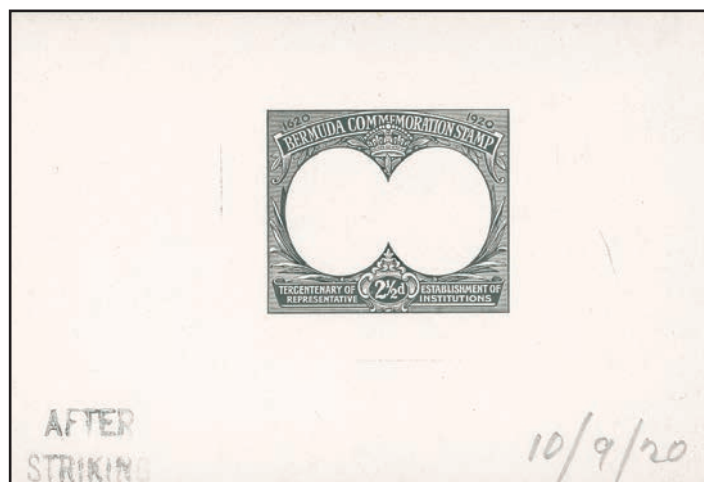
**KGV - Commemorative
Tercentenary 1920 issue**

Two pence halfpenny
One printing
247,740 sold

Two pence halfpenny



Before Striking



After Striking



Plate proof
produced in a strip of six
two pairs and two singles recorded



Specimen
Samuel D12a
pair



Working proof
Full Flags



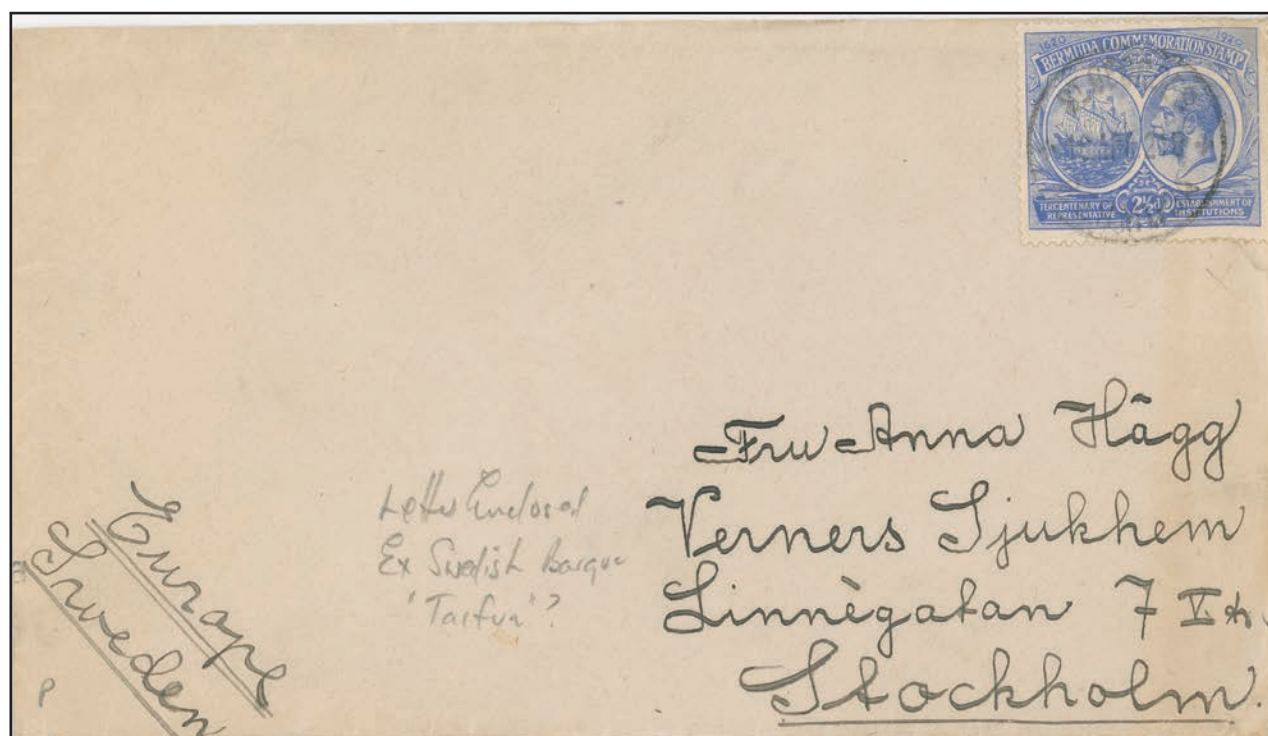
Working proof
Blank Flags

Watermark - Multiple Crown and Script CA

The normal sideways watermark has the Crown to the left of the CA as seen from the back of the stamp.
No watermark errors have been recorded.

KGV - Commemorative
Tercentenary 1920 issue

Two pence halfpenny

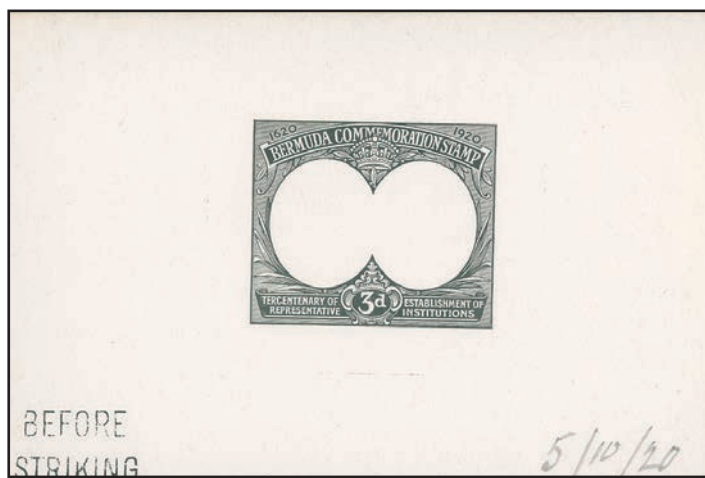


Foreign country rate of 2½d to Stockholm

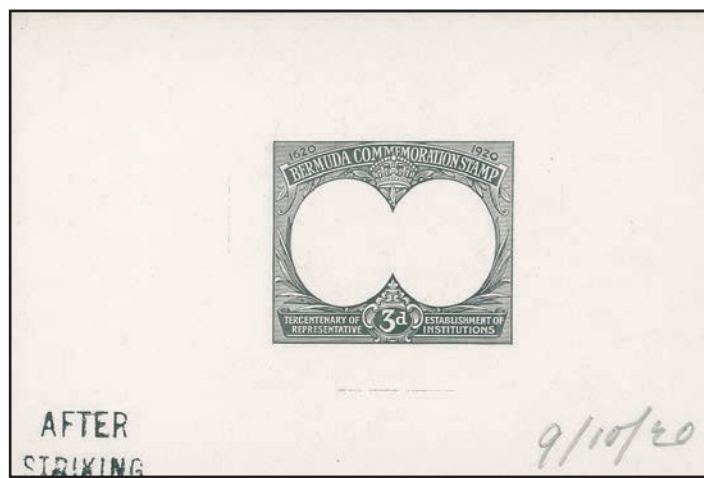
**KGV - Commemorative
Tercenary 1920 issue**

Three pence
One printing
29,380 sold

Three pence



Before Striking



After Striking



Plate proof
produced in a strip of six
two pairs and two singles recorded



Specimen
Samuel D12a
pair

Watermark - Multiple Crown and CA

The normal sideways watermark has the Crown to the left of the CA as seen from the back of the stamp.
Watermark inverted has also been recorded



Wmk inverted



Wmk inverted
and reversed

KGV - Commemorative
Tercentenary 1920 issue

Three pence



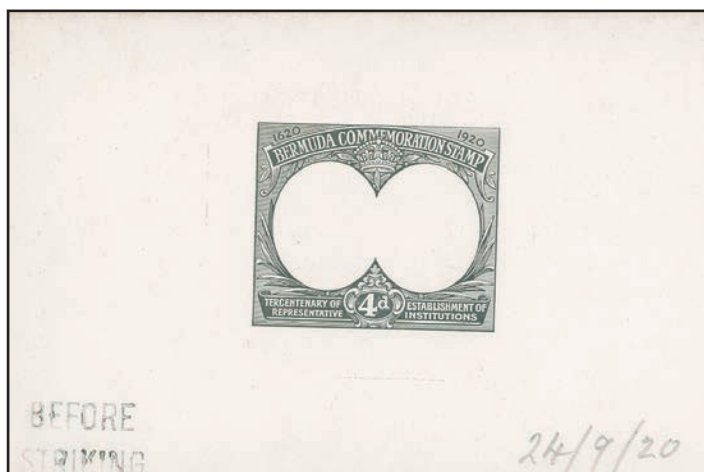
Late usage (1924). The registration fee had been raised to 3d in 1922; therefore double 1d rate plus 3d registration fee



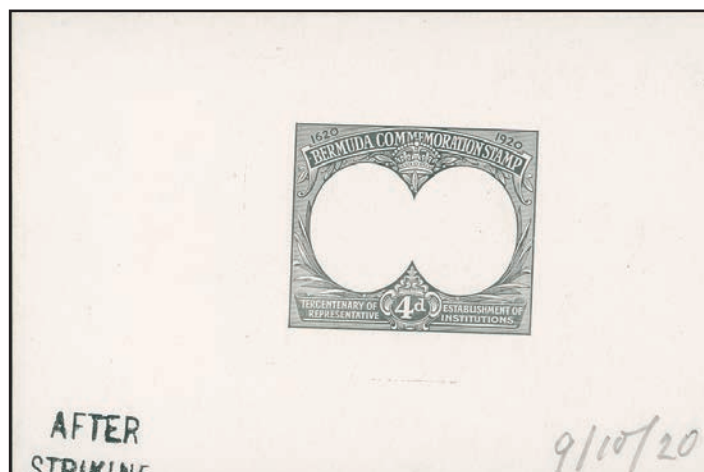
**KGV - Commemorative
Tercentenary 1920 issue**

Four pence

Four pence
One printing
23,460 sold



Before Striking



After Striking



Plate proof
produced in a strip of six
two pairs and two singles recorded



Specimen
Samuel D12a
pair

Watermark - Multiple Crown and CA

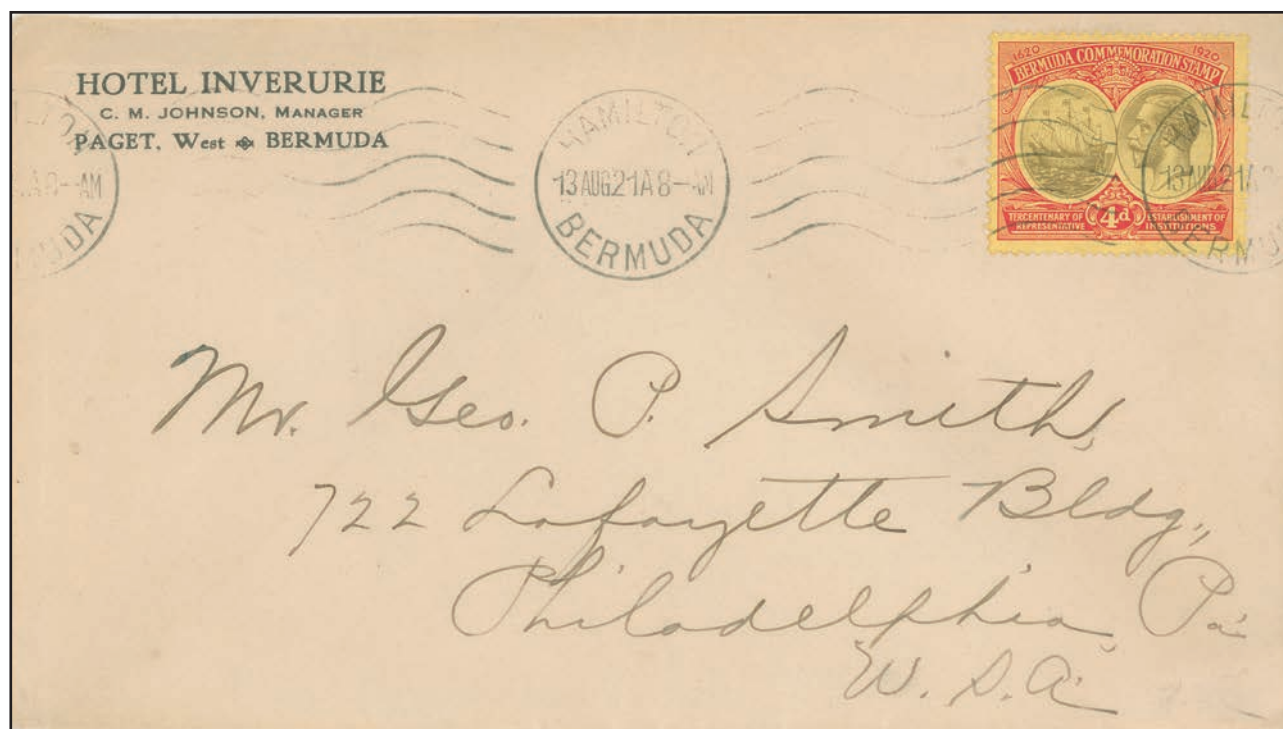
The normal sideways watermark has the Crown to the left of the CA as seen from the back of the stamp.
The missing C has also been recorded



Wmk
reversed

KGV - Commemorative
Tercentenary 1920 issue

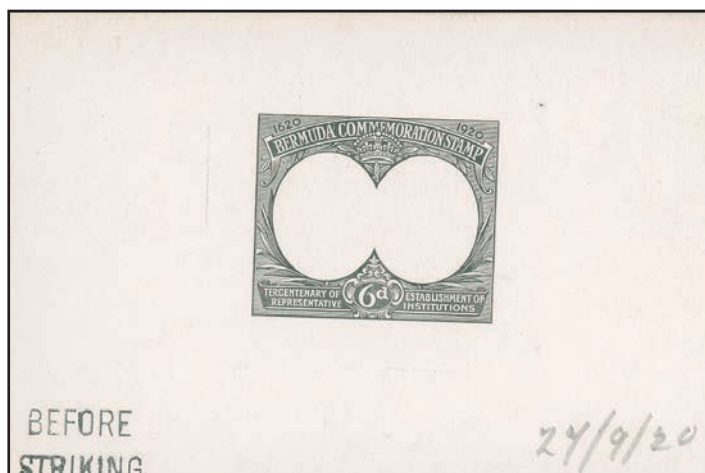
Four pence



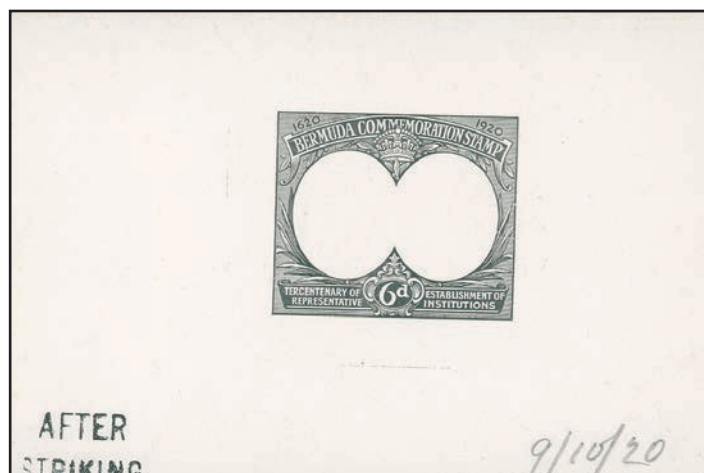
**KGV - Commemorative
Tercentenary 1920 issue**

Six pence
One printing
32,040 sold

Six pence



Before Striking



After Striking



Plate proof
produced in a strip of six
two pairs and two singles recorded



Specimen
Samuel D12a
pair



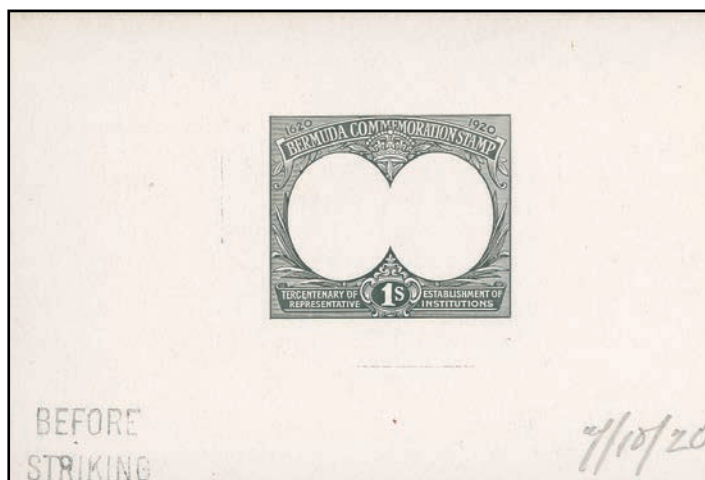
Watermark - Multiple Crown and CA

The normal sideways watermark has the Crown to the left of the CA as seen from the back of the stamp.
No watermark errors have been recorded

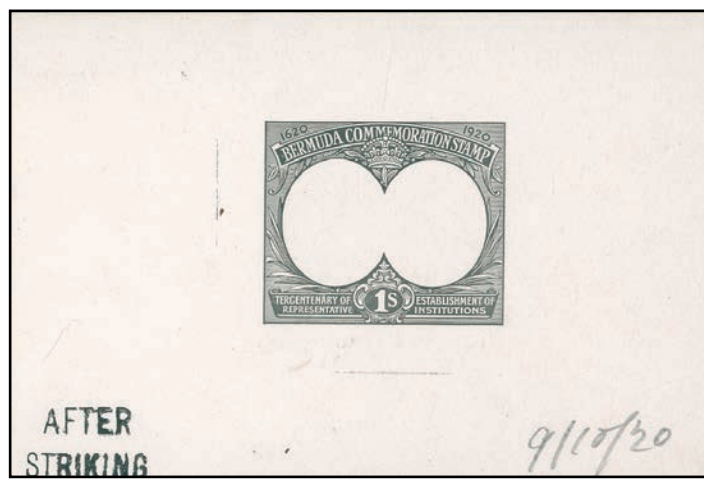
**KGVI - Commemorative
Tercentenary 1920 issue**

One shilling
One printing
24,495 sold

One shilling



Before Striking



After Striking



Plate proof
produced in a strip of six
two pairs and two singles recorded



Specimen
Samuel D12a
pair

Watermark - Multiple Crown and CA

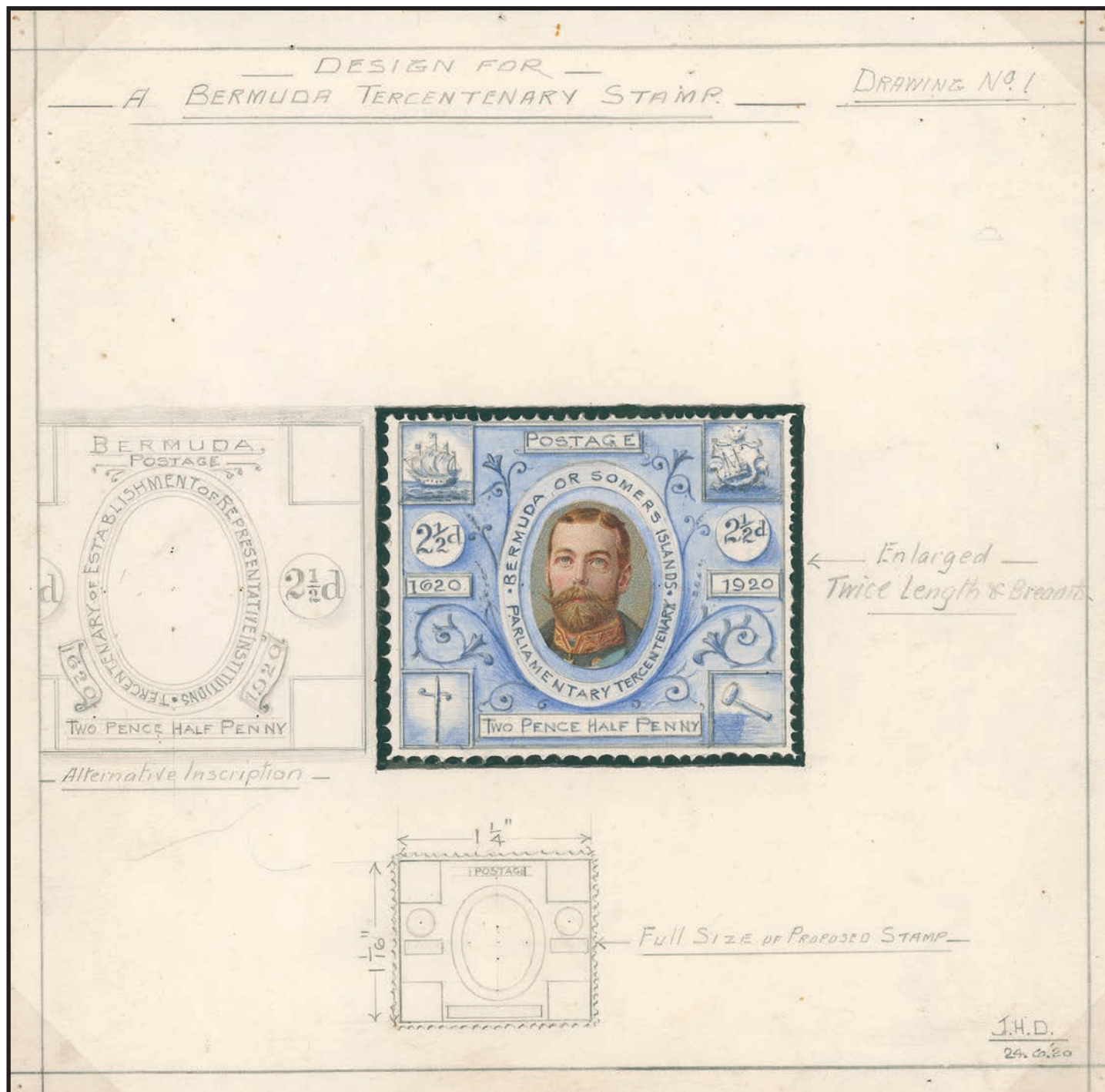
The normal sideways watermark has the Crown to the left of the CA as seen from the back of the stamp.
No watermark errors have been recorded

KGV - Commemorative
Tercentenary 1920 issue

One shilling



Tercentenary second issue



Design No 1

The assembly wanted another issue that incorporated more Bermuda specific elements in the design.
J.H Dale submitted two designs.



J.H Dale Design No 2.

De La Rue sample proofs

rare perforated



SPECIMEN
Samuel DS1



SPECIMEN
Samuel DS2



SPECIMEN
Samuel DS2



No specimen

**KGV - Commemorative
Tercentenary 1921 issue**

One farthing
One printing
151,330 sold

One farthing



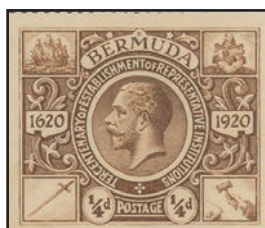
Plate proof
produced in a strip of six
two pairs and two singles recorded



Specimen
Samuel D12a
pair

Watermark - Multiple Crown and Script CA

The normal sideways watermark has the Crown to the right of the CA as seen from the back of the stamp.
Watermark reversed and inverted and reversed have been recorded



Crown to left
of CA



Front with 10 farthing stamps paying the 2½d foreign rate to the US

KGV - Commemorative
Tercentenary 1921 issue

Halfpenny
One printing
149,890 sold

Halfpenny



Plate proof
produced in a strip of six
two pairs and two singles recorded



Specimen
Samuel D12a
pair



Watermark - Multiple Crown and Script CA

The normal sideways watermark has the Crown to the right of the CA as seen from the back of the stamp.
Watermark reversed and inverted and reversed have been recorded



Crown to left
CA



Inverted and
reversed

**KGV - Commemorative
Tercentenary 1921 issue**

One penny

One penny
Three printings
1,009,150 sold



Plate proof
produced in a strip of six
two pairs and two singles recorded



Specimen
Samuel D12a
pair



Watermark - Multiple Crown and Script CA

The normal sideways watermark has the Crown to the right of the CA as seen from the back of the stamp.
Missing A has also been recorded



Crown to
left of CA



Wmk
reversed



Wmk inverted
and reversed



Wmk inverted
and reversed

KGV - Commemorative
Tercentenary 1921 issue

One penny



462,790 stamps printed from plate 1 on 2 April 1921



120,000 stamps printed from plate 2 on 7 May 1921



426,480 stamps printed from plate 3 on 4 June 1921

Plate numbers are only rarely found on the second issue of the Tercentary stamps. Ludington only records Plates 1 and 2. This is the discovery copy proving a third plate was used.

**KGV - Commemorative
Tercentenary 1921 issue**

Two pence
Two printings
35,290 sold

Two pence



Plate proof
produced in a strip of six
two pairs and two singles recorded



Specimen
Samuel D12a
pair



Watermark - Multiple Crown and CA
The normal sideways watermark has the
Crown to the right of the CA as seen
from the back of the stamp.



C of CA
missing



Watermark
inverted



2½d foreign rate plus 2d registration fee
To Lisbon, Portugal

**KGV - Commemorative
Tercentenary 1921 issue**

Two pence halfpenny
Two printings
252,670 sold

Two pence halfpenny



Plate proof
produced in a strip of six
two pairs and two singles recorded



Specimen
Samuel D12a
pair



Watermark - Multiple Crown and Script CA

The normal sideways watermark has the Crown to the right of the CA as seen from the back of the stamp.
Missing A has been recorded



A of CA
missing



C of CA missing
on lower left stamp



Crown to left
of CA



Wmk
reversed

**KGV - Commemorative
Tercentenary 1921 issue**



Three pence
One printing
36,850 sold

Three pence

Plate proof
produced in a strip of six
two pairs and two singles recorded

Specimen
Samuel D12a
pair



Watermark - Multiple Crown and CA

The normal sideways watermark has the Crown to the right of the CA as seen from the back of the stamp.
Watermark inverted has been recorded



Cover to Costa Rica.
The 5½d charge was 2½d
rate to Costa Rica and 3d
registration fee.

**KGV - Commemorative
Tercentenary 1921 issue**

Four pence
One printing
25,890 sold

Four pence



Plate proof
produced in a strip of six
two pairs and two singles recorded

Specimen
Samuel D12a
pair



Watermark - Multiple Crown CA

The normal sideways watermark has
the Crown to the right of the CA as
seen from the back of the stamp.
No other errors have been recorded



Wmk
reversed

Cover to
Transvaal, South Africa



KGV - Commemorative Tercentenary 1921 issue

Six pence
One printing
38,310 sold

Six pence



Plate proof
produced in a strip of six
two pairs and two singles recorded



Specimen
Samuel D12a
pair



Watermark - Multiple Crown CA

The normal sideways watermark has the Crown to the right of the CA as seen from the back of the stamp.
Missing C and the watermark with a substituted crown have been recorded



A of CA
missing



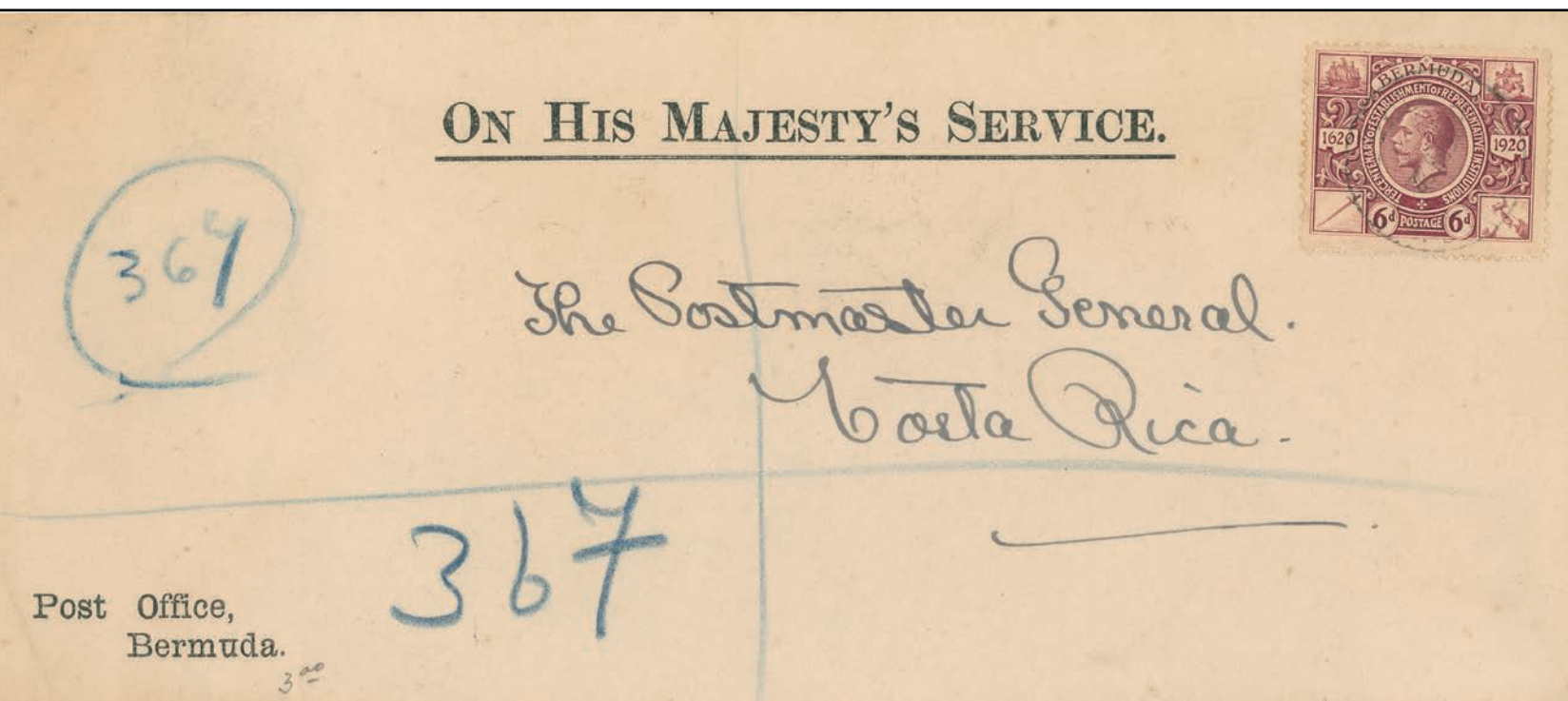
C of CA
missing



mis-shaped
C of CA

KGV - Commemorative
Tercentenary 1921 issue

Six pence



**KGVI - Commemorative
Tercentenary 1921 issue**



Plate proof
produced in a strip of six
two pairs and two singles recorded

One shilling
One printing
27,225 sold



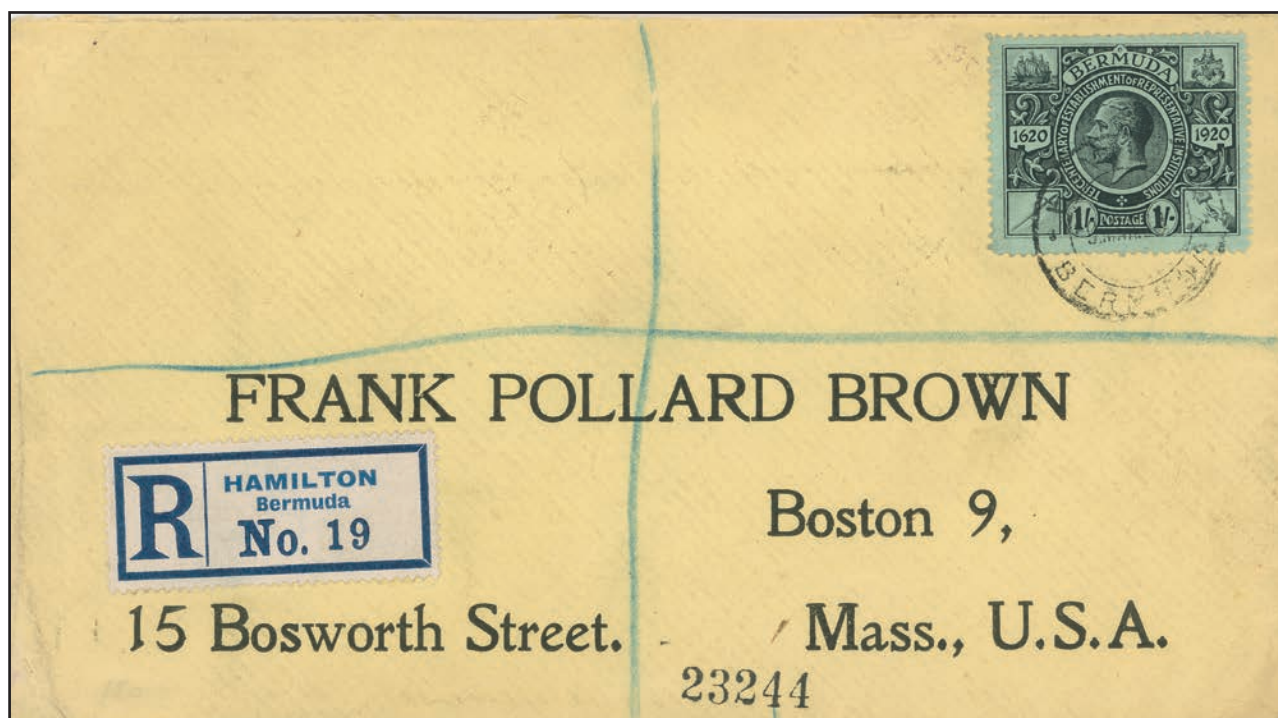
One shilling

Specimen
Samuel D12a
pair



Watermark - Multiple Crown and CA

The normal sideways watermark has the Crown to the right of the CA as seen from the back of the stamp.
No watermark errors have been recorded



KGV - Commemorative
1935 (6 May) Silver Jubilee



Master die
Unique

Three companies were chosen to share the printing of the 1935 Silver Jubilee, the Bermuda stamps were printed by Waterlow from plates 1A. However, while the other countries show the broken turret flaw on the 1d value those of Bermuda do not.



First Day Cover with all four values and the official cachet.

**KGVI - Commemorative
1935 (6 May) Silver Jubilee**

One Penny
One printing
885,242



SPECIMEN



Variety



Bird by
turret



To **Canada**. The registration fee was 3d (since 1922) and 1d rates had been change to 1½d in 1934 so that the imperial rate to UK was 1½d the rate to British Empire was 2½d. Therefore this letter was short 1d and no tax was applied.

KGV - Commemorative
1935 (6 May) Silver Jubilee

Penny halfpenny

Penny halfpenny
One printing
1,191,602



SPECIMEN



Variety



Bird by
turret



British Empire 2½d rate to **New Zealand** and 3d registration fee. Short 1d.

KGV - Commemorative
1935 (6 May) Silver Jubilee

Two pence halfpenny

Two pence halfpenny
One printing
1,191,602



SPECIMEN



Variety



Bird by
turret



Philatelic letter to USA, the 2 1/2d stamp with bird by turret flaw

KGV - Commemorative
1935 (6 May) Silver Jubilee

One shilling

One shilling
One printing
58,802



SPECIMEN



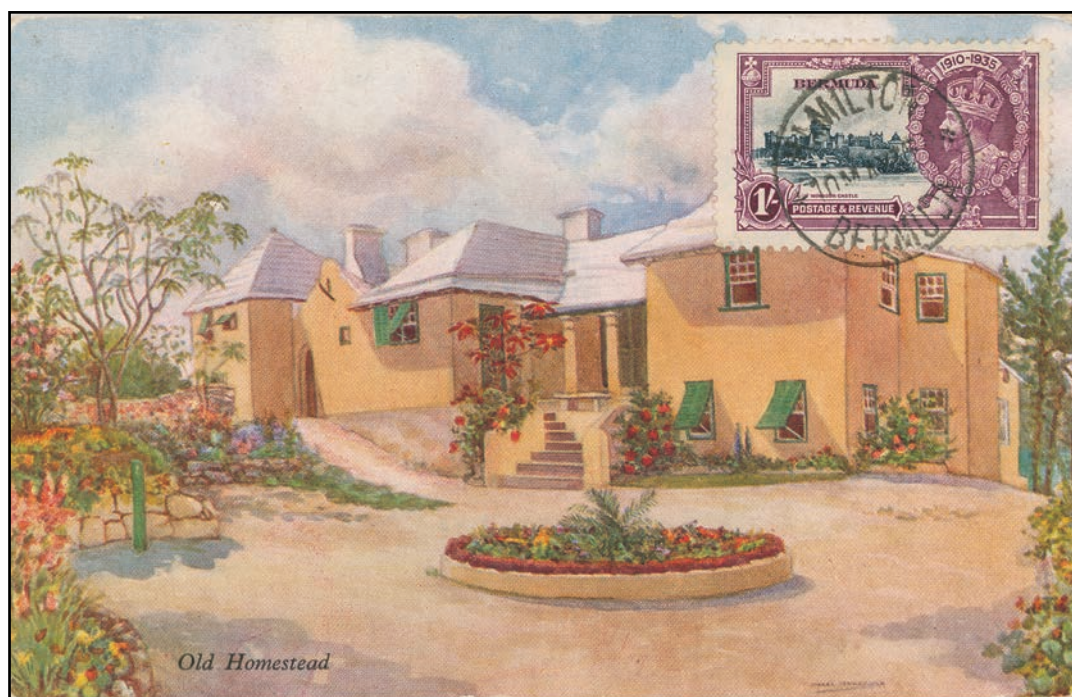
Kite and
vertical log



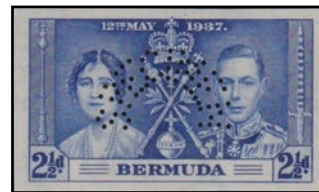
Kite and
vertical log



Kite and
horizontal log



KGVI - Commemorative 1937 Coronation



Imperf plate proof perf "Specimen"
6 examples recorded



Ex DLR archives



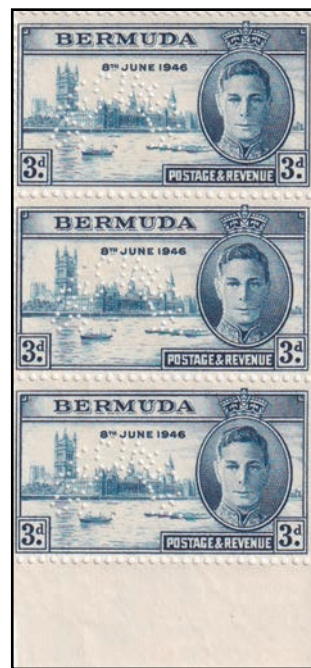
Perf "Specimen"



KGVI - Commemorative 1946 Victory



Specimen in red from un-
known origin.
Ex Ulrich



Strips of three perf "Specimen"



Falling bomb
flaw R5/3

KGVI - Commemorative
1948 Silver Wedding

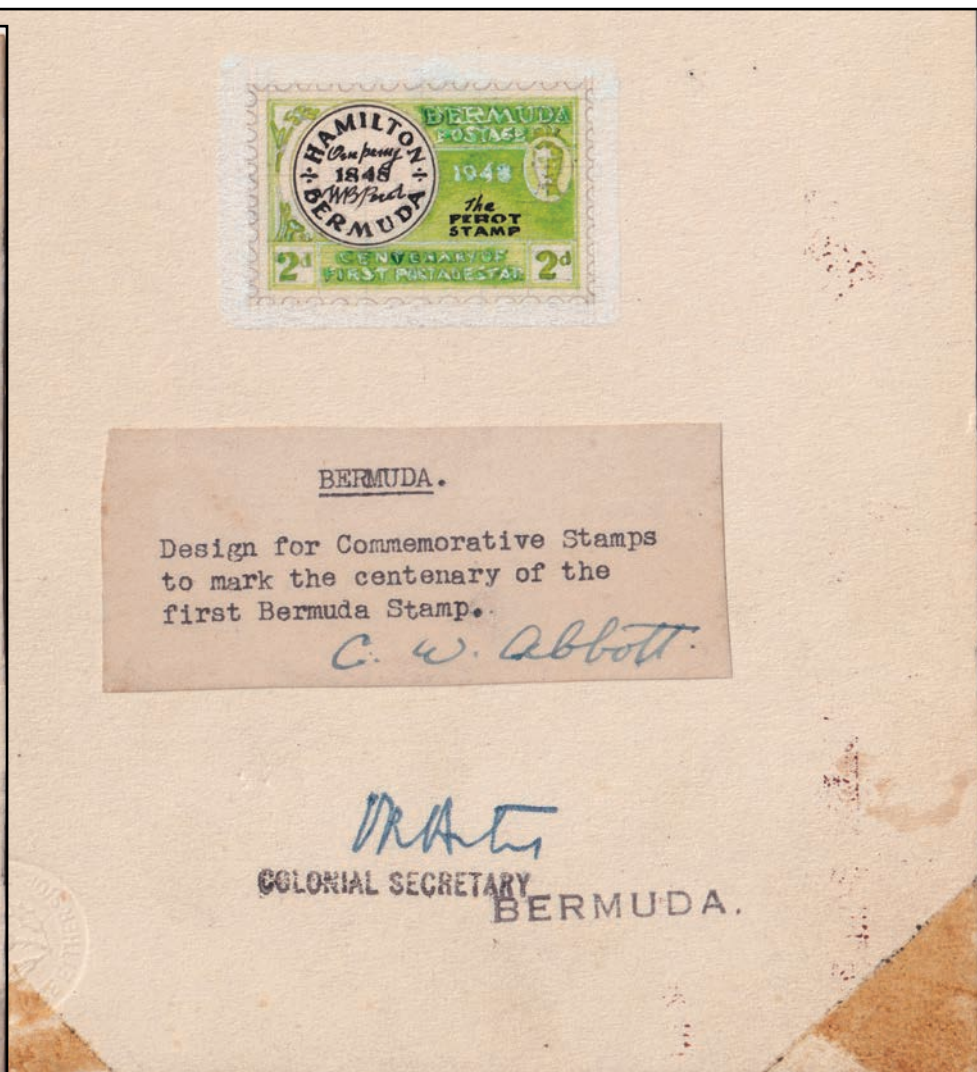
1 1/2d Photogravure by Waterloo,
 £1 Line engraved by Bradley Wilkinson



KGVI - Commemorative
1949 Perot Postmaster



Designs prepared
by CW Abbott
to celebrate
the 100th an-
niversary of the
Perot postmaster
stamps



KGVI - Commemorative
1949 Perot Postmaster

Line engraved by Bradley Wilkinson

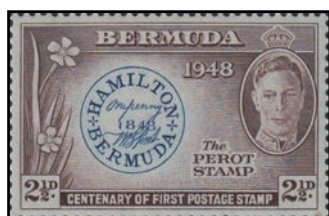


Photo essay



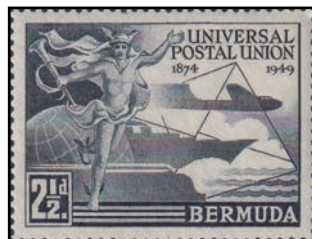
Perforated Specimen
Samuel type B9

Unique



KGVI - Commemorative
1949 UPU

2 1/2d, 1/- Line engraved by Waterloo,
3d, 6d Line engraved by Bradley Wilkinson

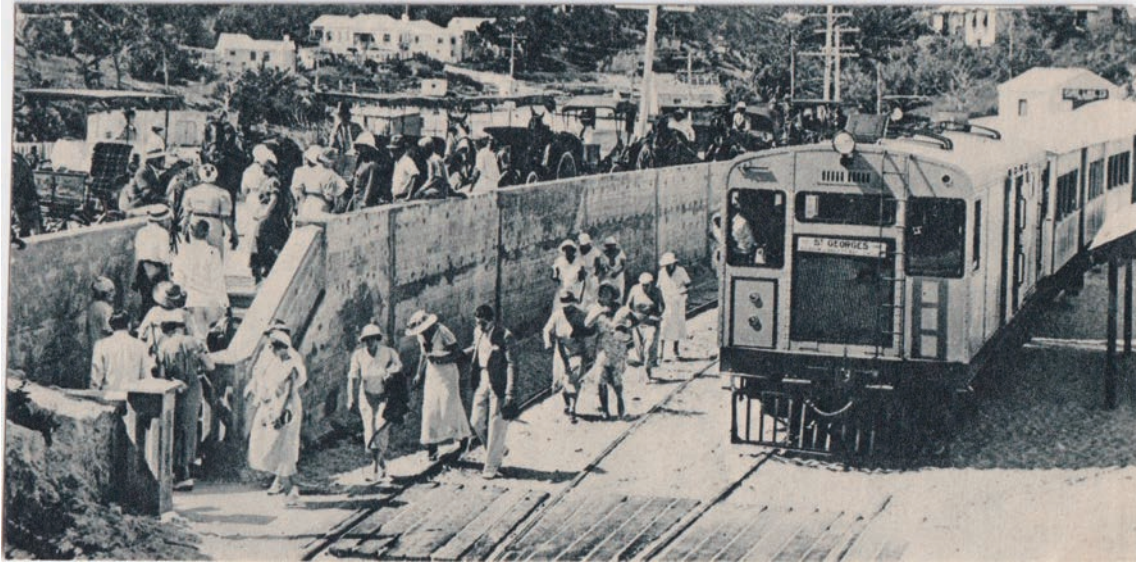


Missing C of CA
only recorded example

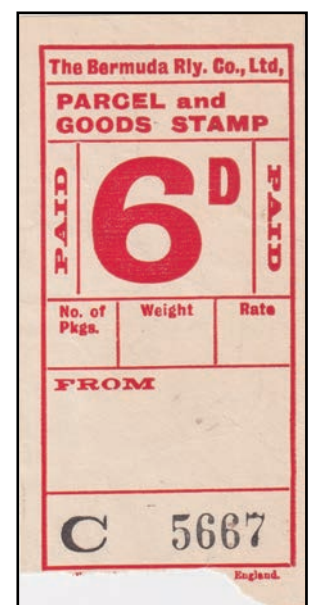
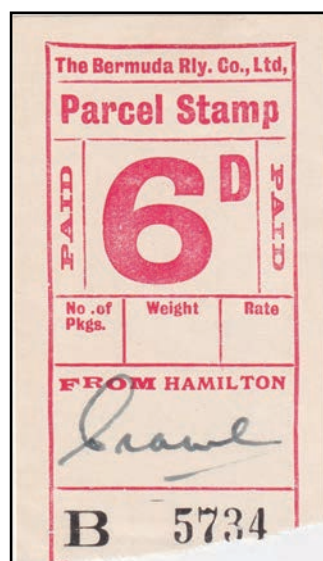
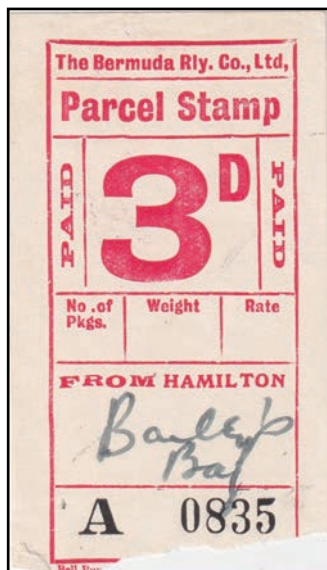


Bermuda Railway stamps

Bermuda did not have cars, with a few exceptions such as Doctors, until after WWII. The Bermuda railway operated from 1931 to 1948 across the full length of the island from St Georges to Somerset. Special stamps were produced as evidence of payment for parcels and bulk goods and later included mail for a 3d charge..



Scan of photo of the train



Parcel stamps

Parcel and goods-stamp

Prices were based on distance.

The 3d stamp being the most commonly found the others are rare (it is thought there are less than 10 of each currently recorded)

Bermuda railway stamps



Six covers recorded