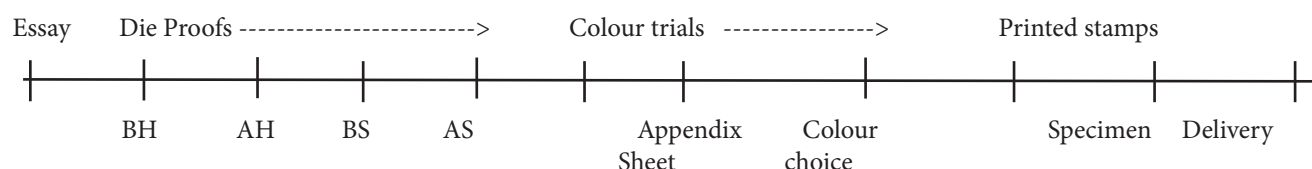


BERMUDA DOCK ISSUE

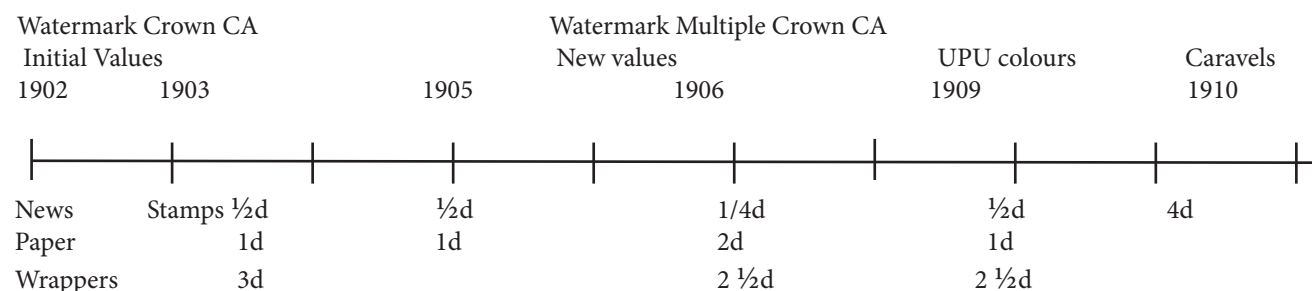
Purpose: This display shows in great detail the complex format by which new issues were designed and produced by De la Rue, in this case the Bermuda Dock Issue of 1902, and covers the production through to the issue stamp. This was the first stamp issue in the Bermuda that did not include the Monarch's head, they replaced stamps with a the head of Queen Victoria, and were used throughout the reign of King Edward VII. The stamps were issued between November 1902 and February 1910 in 7 different values from, ¼d to 4d with two different watermarks.

Values: By the turn of the century standard postal rates came into existence. These rates were as follows: ¼d for newspaper wrappers, ½d for local postcards; 1d for local and Empire mail; 2 ½d to UPU countries; and 2d for registration. There are no known wrappers with just the 1/4d stamp, the 3d and 4d had no official rate. There are no major printing flaws on these stamps. Absence of plate flaws, watermark varieties and mundane postal rates decreases the interest of post-production material.

Timeline for production



Timeline of Dock Issue



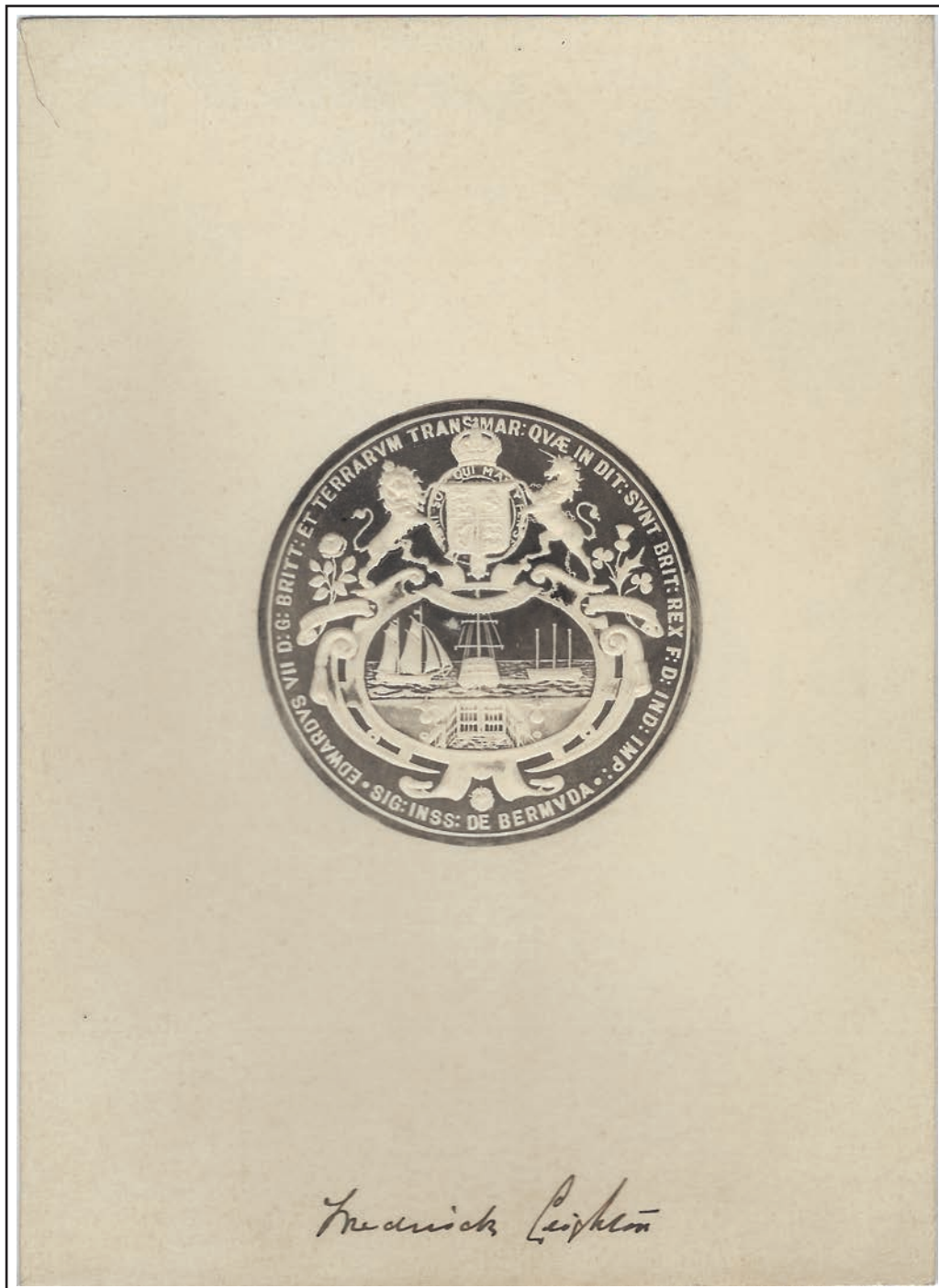
Order:

- I: Essays, Vignette and Master Die Proofs,
- II: Initial Value,
- III: New Values
- IV: UPU Colours

Items of note: Appendix sheet and essays are unique, the colour trials have a maximum of 6 examples known of which for the final group 2 are in the Royal Philatelic Collection. Most Die Proofs exist in both Before and After Hardening states, however, the ½d, 2d, 2 ½d and 4d are only known Before Hardening. Specimens were overprinted for UPU countries with Samuel D12.

References: The Postal History and Stamps of Bermuda, M. H. Ludington 1978 - Chapter 9, Appendix II Specimen stamps of the Crown Colonies, 1857-48, Marcus Samuel, Bermuda Post, Bermuda Collectors Society, January - March 2015, - Color trials for the Bermuda Dock Issue. Article by D. Cordon,

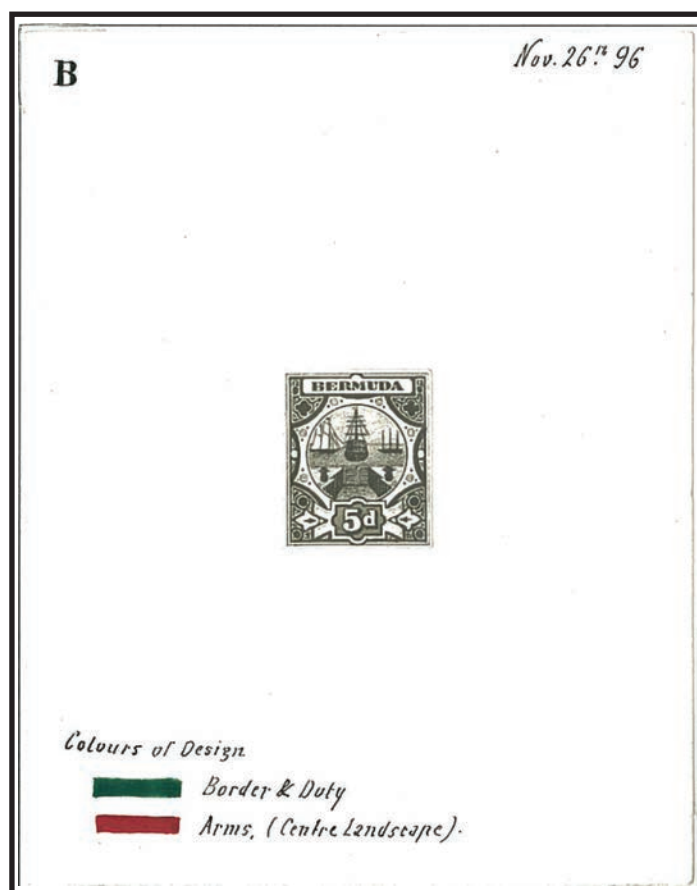
GREAT SEAL OF KING EDWARD VII



Signed by the artist Frederick Leighton, son of the famous painter of the same name.
The central part of the design was used for the Dock issue.



Composite Essay "A",
not approved



Composite Essay "B", approved
on August 8, 1901 (the approval
received on September 3, 1901)

There was a need for a 5d value for double rate and supplemental rate mail to the United States, therefore, on October 22, 1896 the Colonial Secretary requested of the printers De La Rue & Co and the Crown Agents to prepare a 5d value in a new design. De La Rue prepared two essays using the central design of the great seal of Bermuda. This design was taken from woodcuts provided by the Crown Agents. The second essay was approved on August 8, 1901 and De La Rue was instructed to prepare plates for 1d stamps and ¼d newspaper wrappers. On December 19, 1901, it was decided to use this design for other values as and when required.

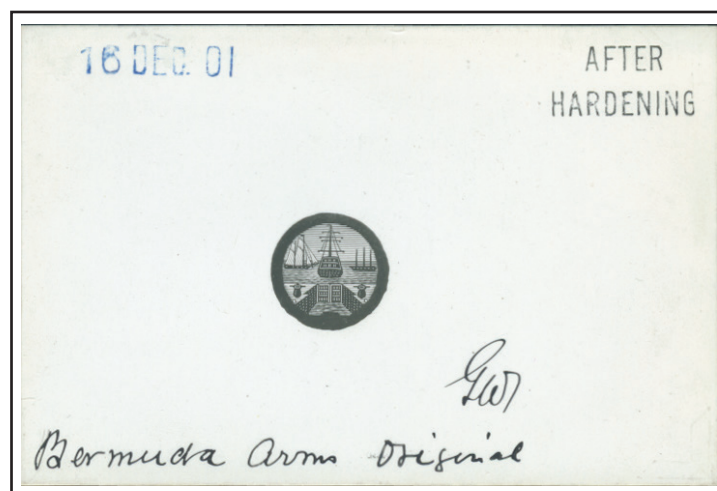
1896 - 1902
Design

Un-cleared Surround

DIE PROOF ESSAYS
VIGNETTE



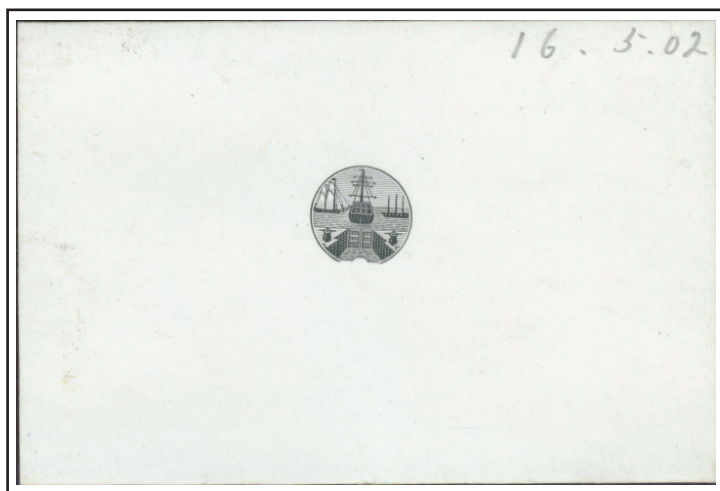
13 examples recorded.
ex Hicks



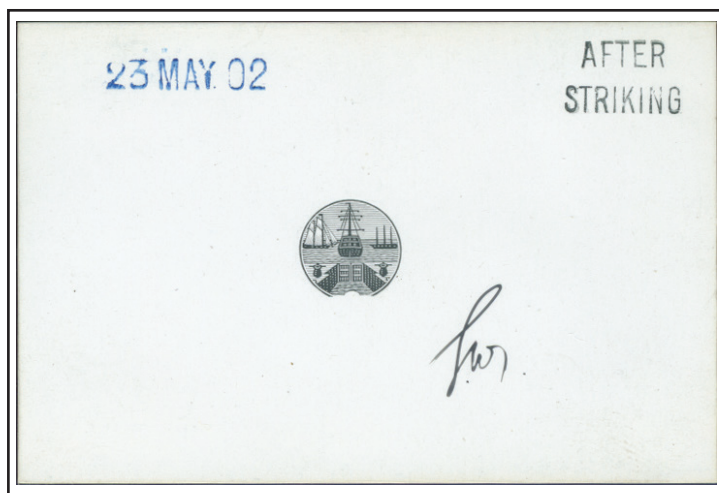
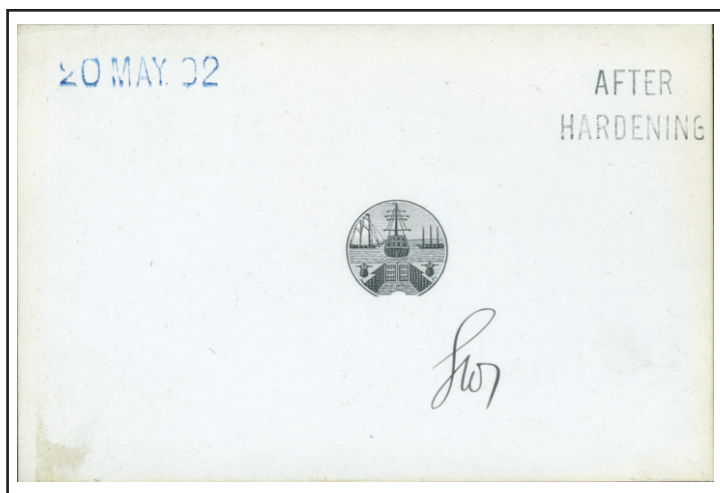
3 examples recorded.
ex Ludington

1896 - 1902
Design

DIE PROOF - VIGNETTE



LV Phillips personal folder.
ex Ulrich



ex Ludington

Full set, unique engravers personal copy, “Before Hardening”, “After Hardening” and “After Striking”.

Recorded examples: 10 BH, 2 AH, 2 AS

The die was initially printed “before hardening” to ensure no changes were required. The die was then hardened to be used in transferring the design to the printing plates. The “after hardening proof was to check that the die proof did not crack in the hardening process, as this process involved heating and then cooling the die. The “after striking was to ensure no issue developed in the transfer of the images to the plate.

1896 - 1902

Design

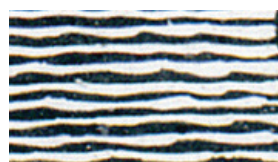
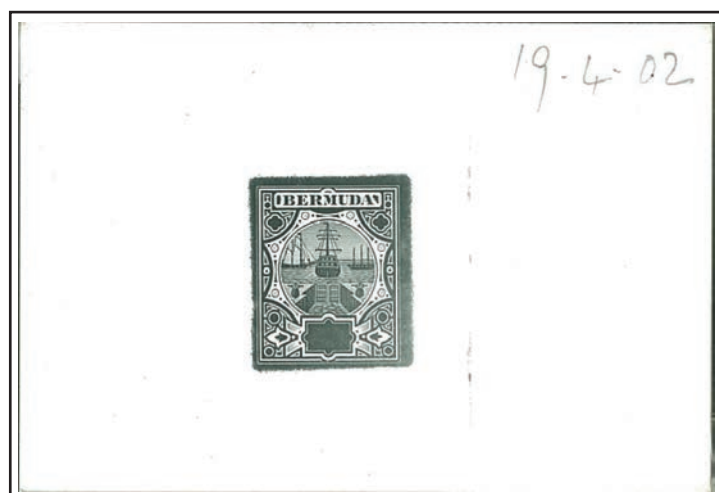
DIE PROOF ESSAYS

MASTER DIE

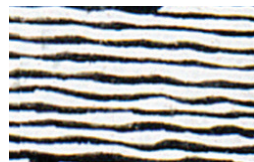
The Master Die Proof includes both the center part of the stamp (vignette) and the frame before the value was added. However, these examples are considered “essays” as changes were subsequently made to the design, as illustrated below.



Uncleared master dated 5 April 02 on reverse
One unmarked recorded
ex Ludington



Master



Vignette



Master



Vignette



Master

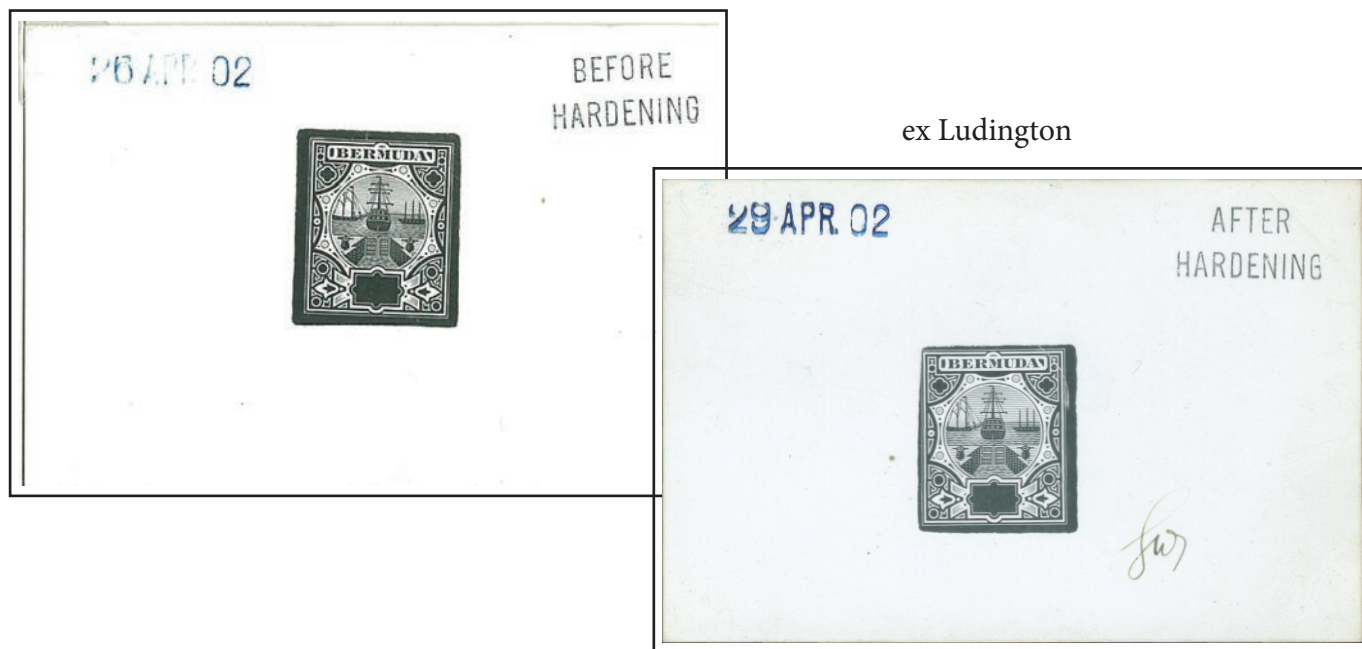


Vignette

The illustrations above show the changes from the Master Die Proof before the acceptance of the final design, and that of the final design shown in the Die Proof of the Vignettes below. The changes are as follows: the lines for the water are thinner, the lines in the sails are shorter, the portholes in both ships are squarer, and the rings below the bollards have been made thicker.

1896 - 1902
Design

DIE PROOF ESSAYS
MASTER DIE



*8 examples recorded of Before
Hardening and 2 examples After
Hardening*



Progress proof of the cleared
master die. Several points of
detail not yet engraved.
ex Hicks, ex Alford

Cleared and uncleared Progress Proof. The cleared proof shows parts of design removed by scraping. Note no dots in inside circles, line removed above the "U" of BERMUDA

FIRST APPENDIX SHEET

Appendix Sheets were produced with a number of the colour trials and submitted for approval of the colour for the various values. This sheet bears fourteen examples of the colour trials with approval for the colours for the 1/4d, 1d and 3d values. The approved colours are initialed WHM by Sir William Hepworth Mercer, Agent for the Crown Colonies.

May 30th 1902.
Bermuda
Reg. 82/1901.

Appendix.

Another colour
selected } see below

1d
2



Approved
WHM

1d



Approved
WHM

App^d for 1/4d
(55) W.H.M.
4.7.05



3d

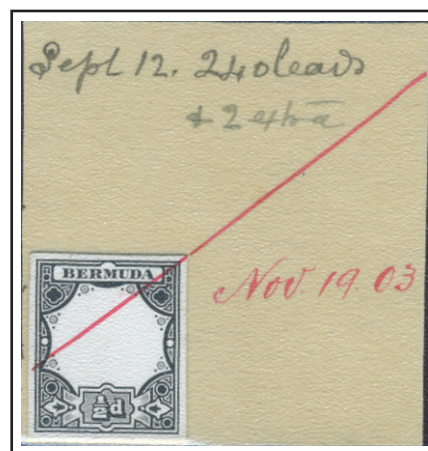


Approved
(signed) W.H.M.
6.4.03

31/5/12
N.C.

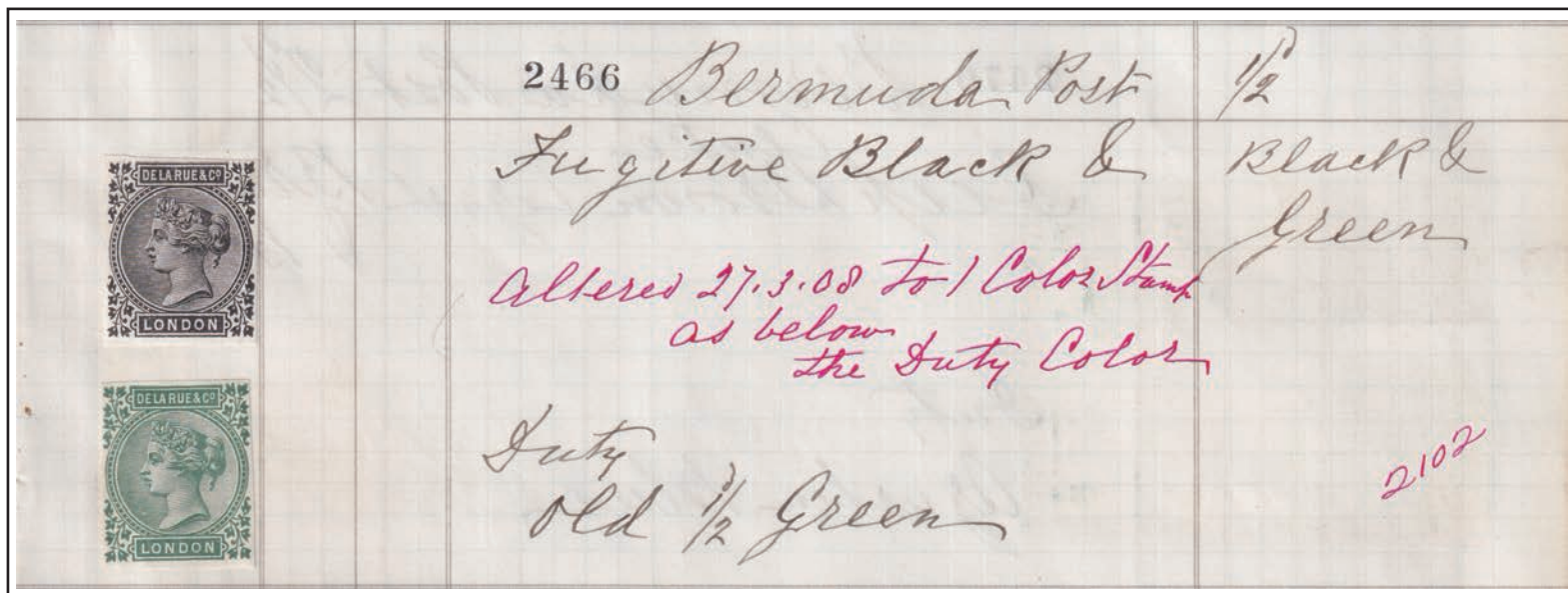
Initial Values Half Penny

DIE PROOF - FRAME



3 examples recorded.
There are no known examples
of "After Hardening".

240 leads - number of images
on the sheet. Two extra images
in case of damage



DLR recipe for 1/2d green and black

COLOUR TRIALS



unique copy
Perf 14

14th August, 1903.

Bermuda
Regn. 7/1/03.

Appendix.



Approved for 1/2d
Stamp

WHM

SECOND APPENDIX SHEET
Appendix Sheets were produced with a number of the colour trials and submitted for approval of the colour for the various values. This sheet bears four examples of the colour trials with approval for the colours for the 1/2d. The approved colours are initialed WHM by Sir William Hepworth Mercer, Agent for the Crown Colonies.

**Initial Values
Half Penny**

Watermark Crown & CA

Printings: One

ISSUED STAMP

Number of stamps: 361,440

Sheet Format: sheets of 240 in 4 panes of 60

Usage: Local postcard rate



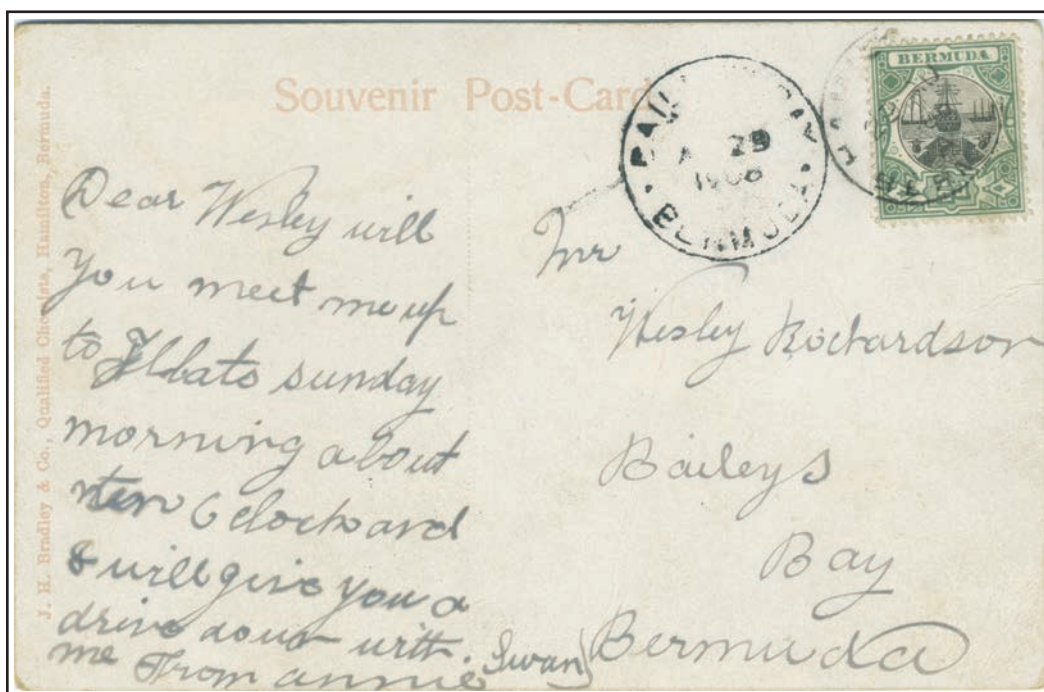
Black
& green



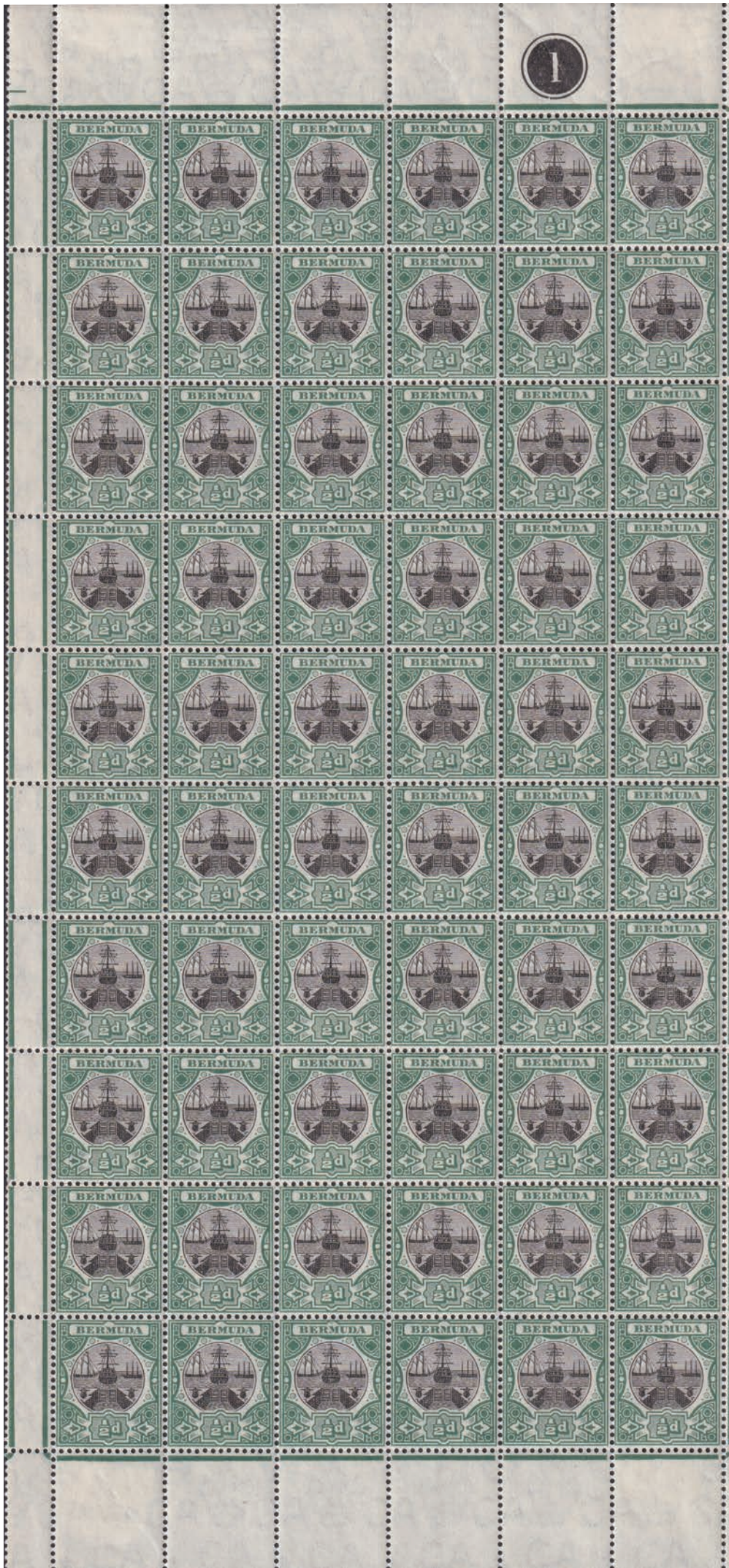
Ultramar
Portuguese PO



Specimen
Natal PO



Initial Values
Half Penny
Watermark Multiple
Crown & CA



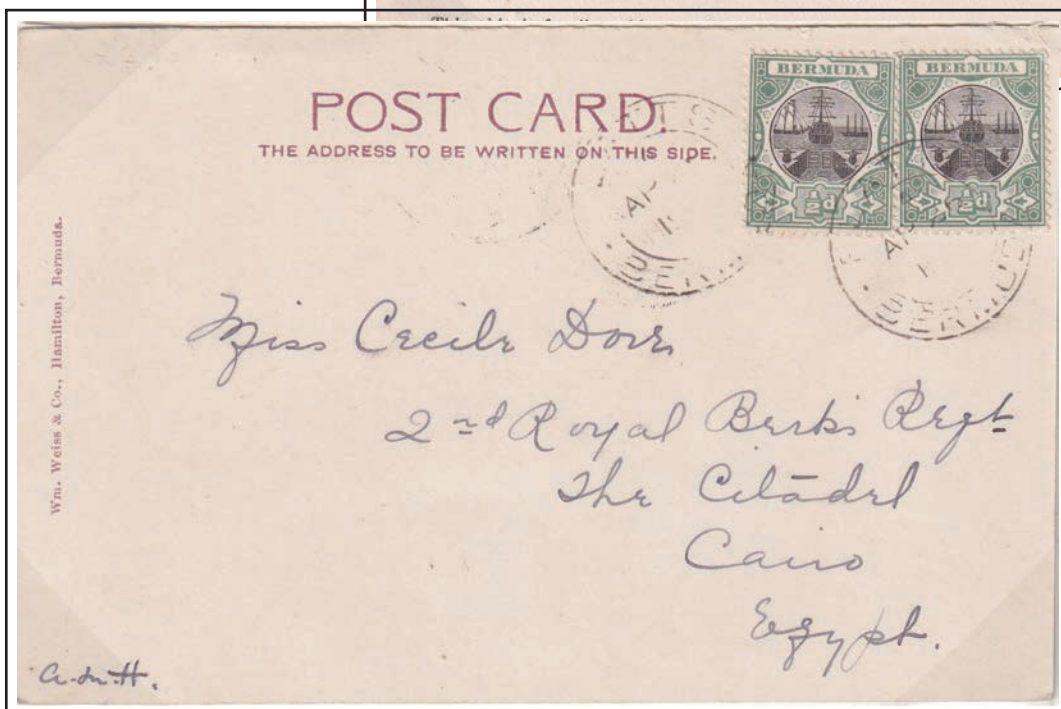
Initial Values
Half Penny

Watermark Crown & CA
Postcard Rate



Sent to **TASMANIA**
Postcard rate was 1d, how-
ever, sent at the ½d rate
for printed matter as no
message on the card.

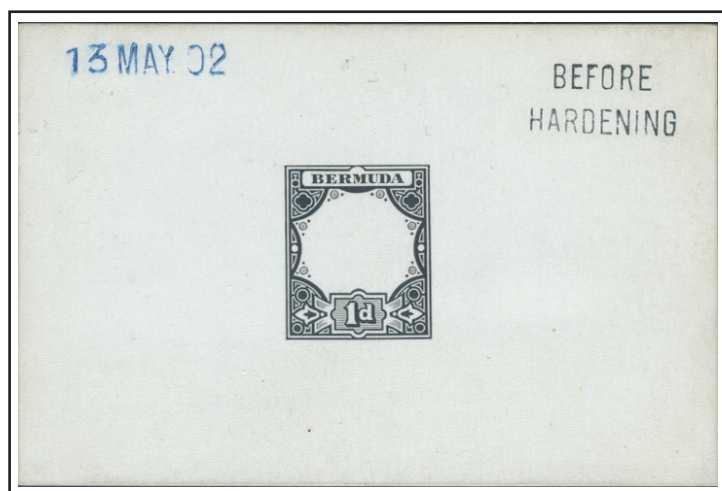
Sent to **CURACAO**
Postcard rate was 1d,
however, only a ½d
stamp therefore the T for
tax was applied



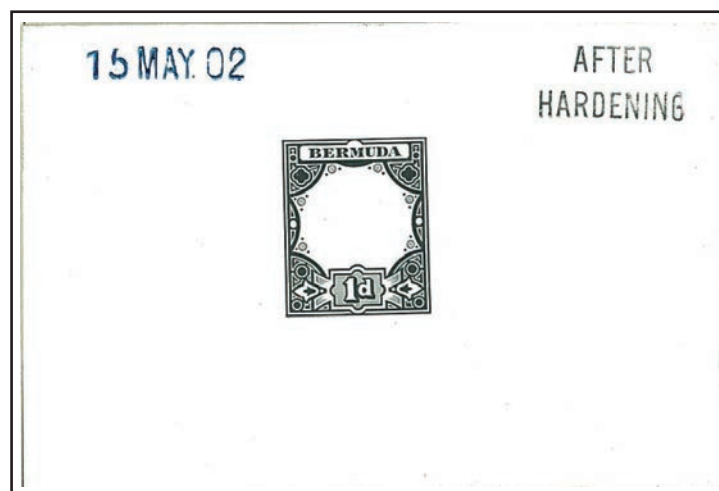
Sent to **EGYPT**
Correct postcard
rate of 1d,

Initial Values One Penny

DIE PROOF - FRAME



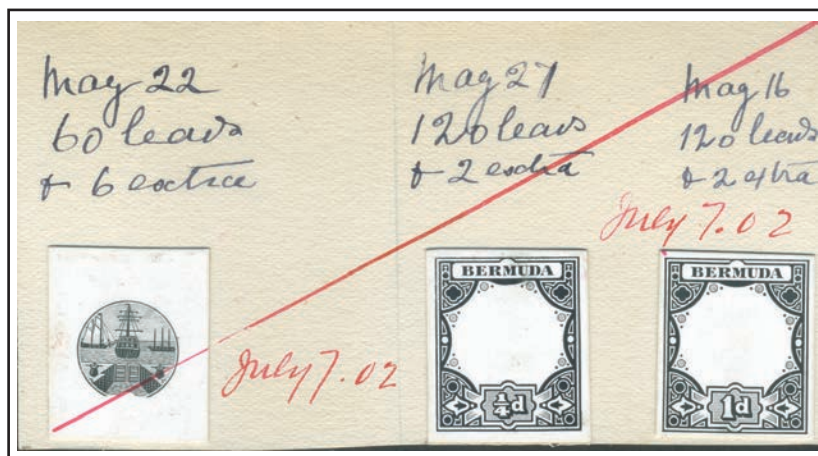
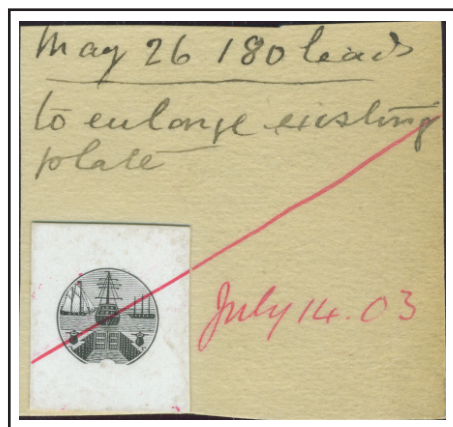
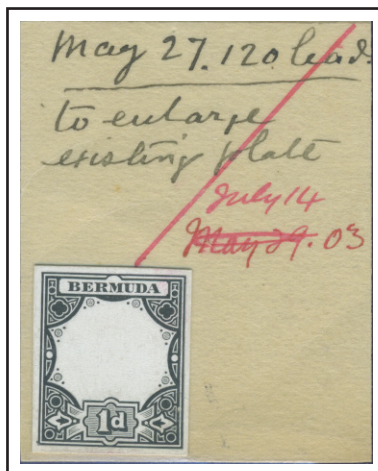
9 examples recorded



4 examples recorded

Note: there are two different frame designs. The frames for values up to 1d have no dot in the circle in the middle of the left and right sides of the frame. The higher values have a dot, as can be seen on the 3d value.

The number of leads show the initial sheet for the 1d was 120 images which was increased to 240 images before the third printing.



The 1d value was initially produced in sheets 120 stamps in 2 panes of 60, this was then increased to sheets of 240 stamps in four panes separated by gutter

Initial Values
One Penny
COLOUR TRIALS

Watermark Crown & CA



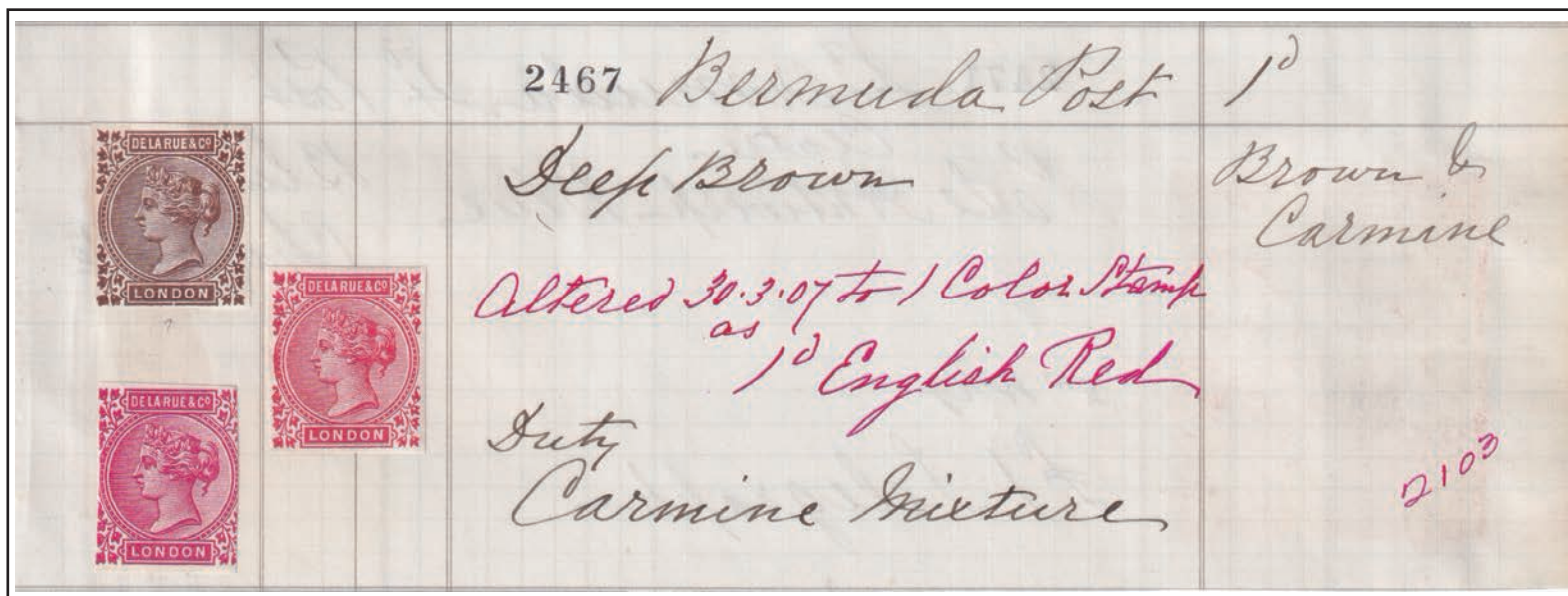
Black &
carmine



Issued colour
brown & carmine



Grey &
carmine



DLR recipe for 1d brown and red

SPECIMEN - Samuel D12 and varieties

Printings: Three

Number of stamps: 2,175,840

Sheet Format: sheets of 120 in 2 panes of 60

Usage: British Empire rate



Pos 17
clubbed foot
on M



Pos 41
broken M



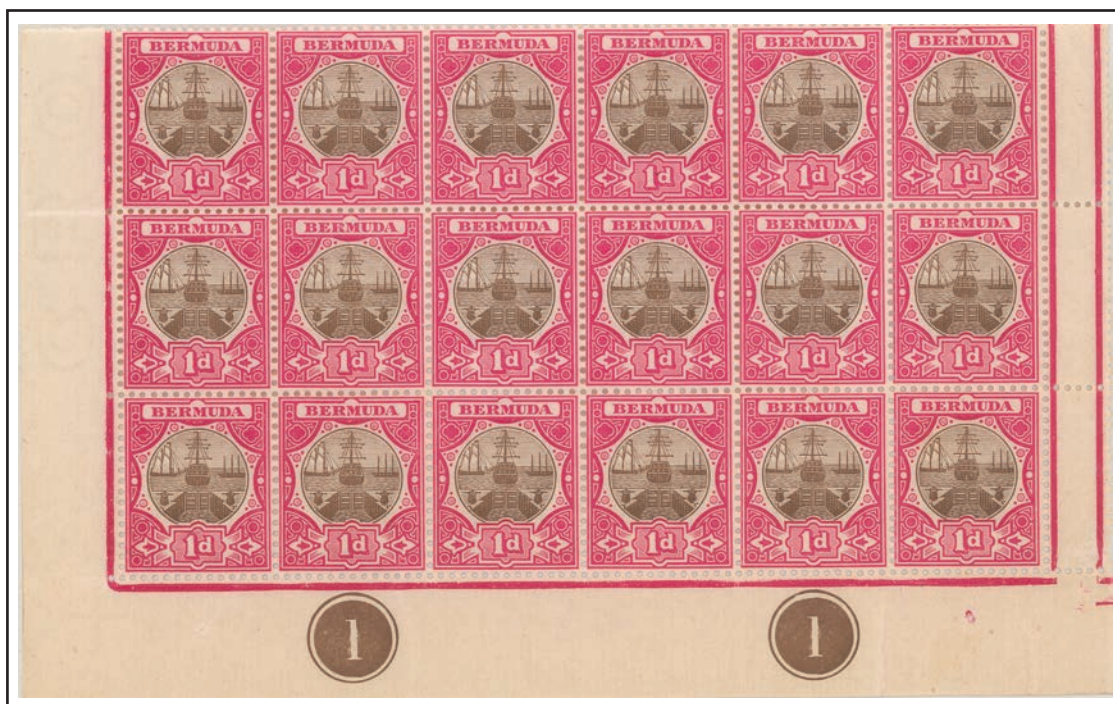
ULTRAMAR
Portuguese PO
exAngola
archives



Samuel D9
printers file
copy

Initial Values
One Penny

Watermark Crown & CA



Inverted Watermark



"C" appears
to be an "O"

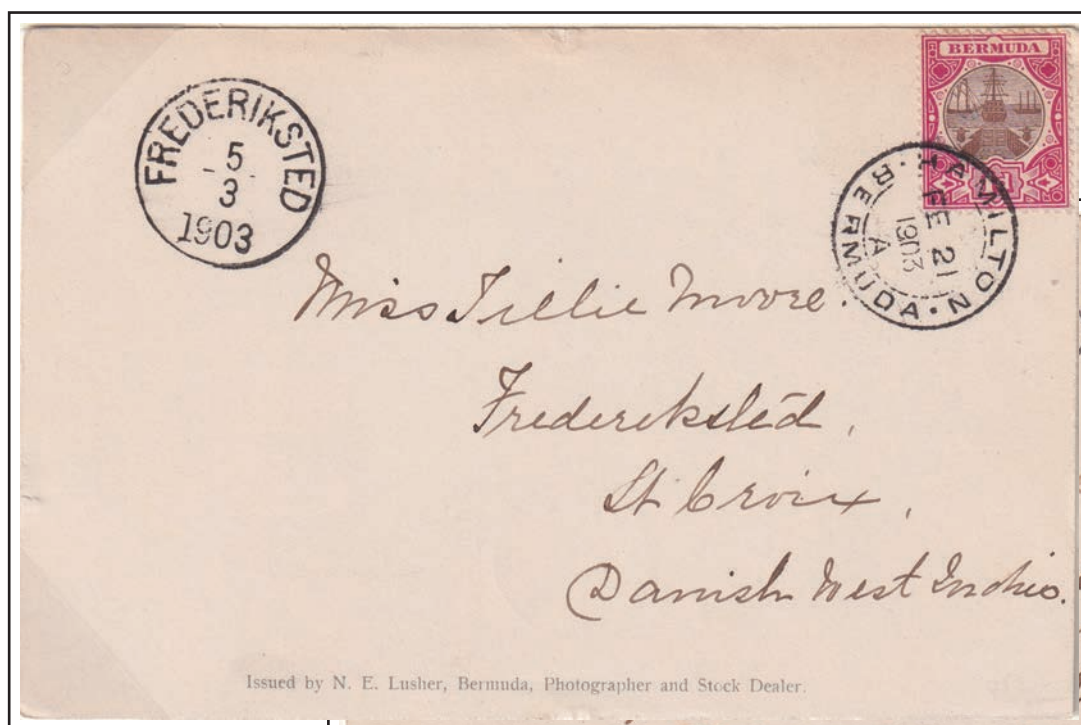
Initial Values
One Penny

Watermark Crown & CA

Sent to **UK**,
forwarded to **ITALY**
1d rate to UK, 1½d
stamp added for the
2½d foreign rate when
forwarded to Italy



1d postcard rate



Sent to **ST CROIX**
Danish West Indies

Sent to **Buenos Aires**
Argentina



Initial Values
One Penny

Watermark Crown & CA



Sent to **BOHEMIA**
November 1902 cover to Bohemia at the 2½d
UPU foreign rate plus 2d registration fee



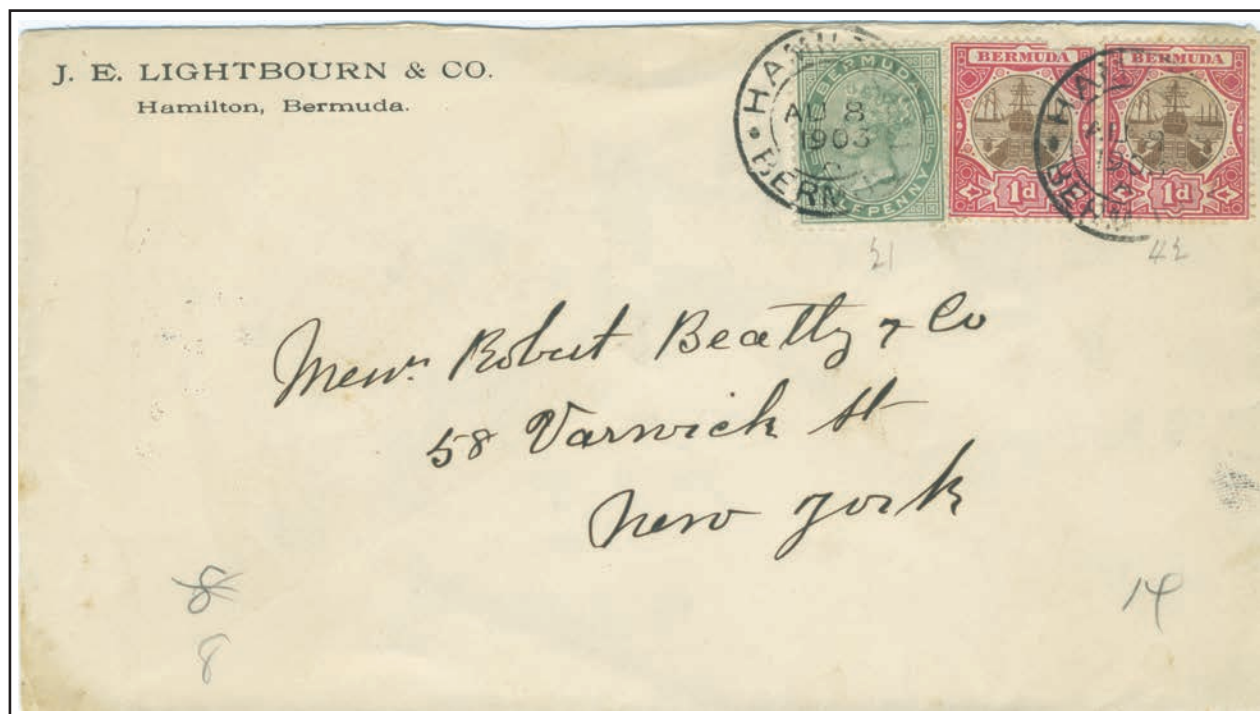
Double 2½d UPU foreign rate

Initial Values
One Penny

Watermark Crown & CA



1d empire rate plus 2d registration fee



2 ½d UPU foreign rate

Initial Values
One Penny

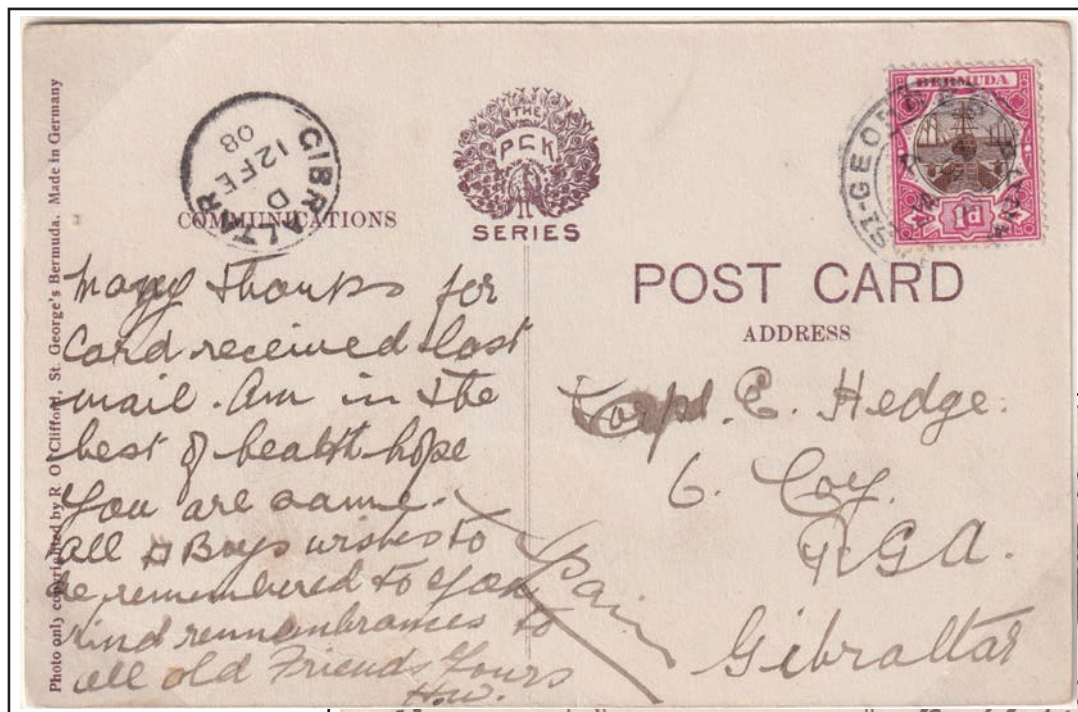
Watermark Multiple
Crown & CA



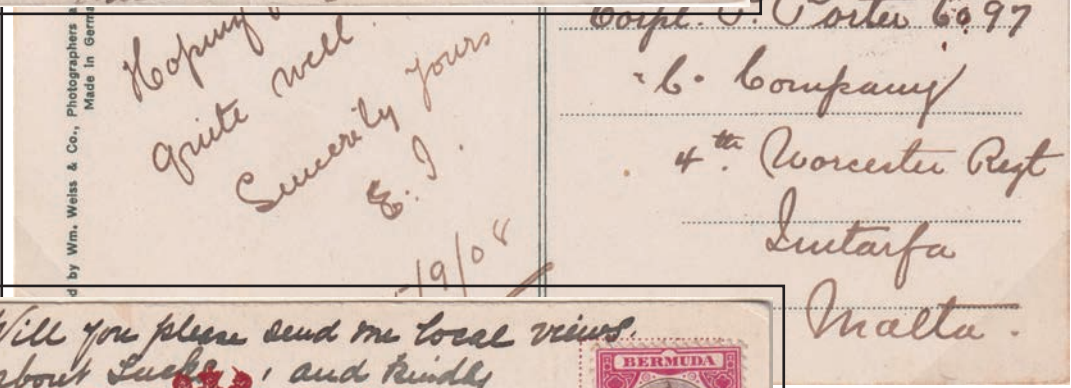
Initial Values
One Penny

Watermark Multiple Crown & CA

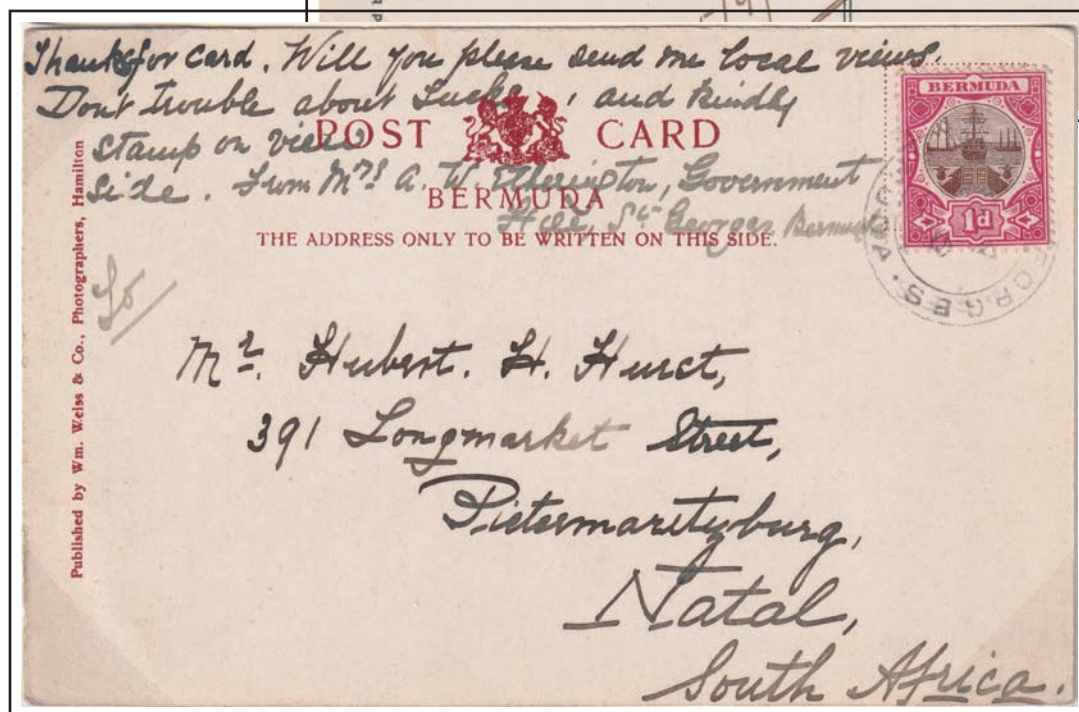
1d postcard rate



Sent to GIBRALTAR



Sent to MALTA

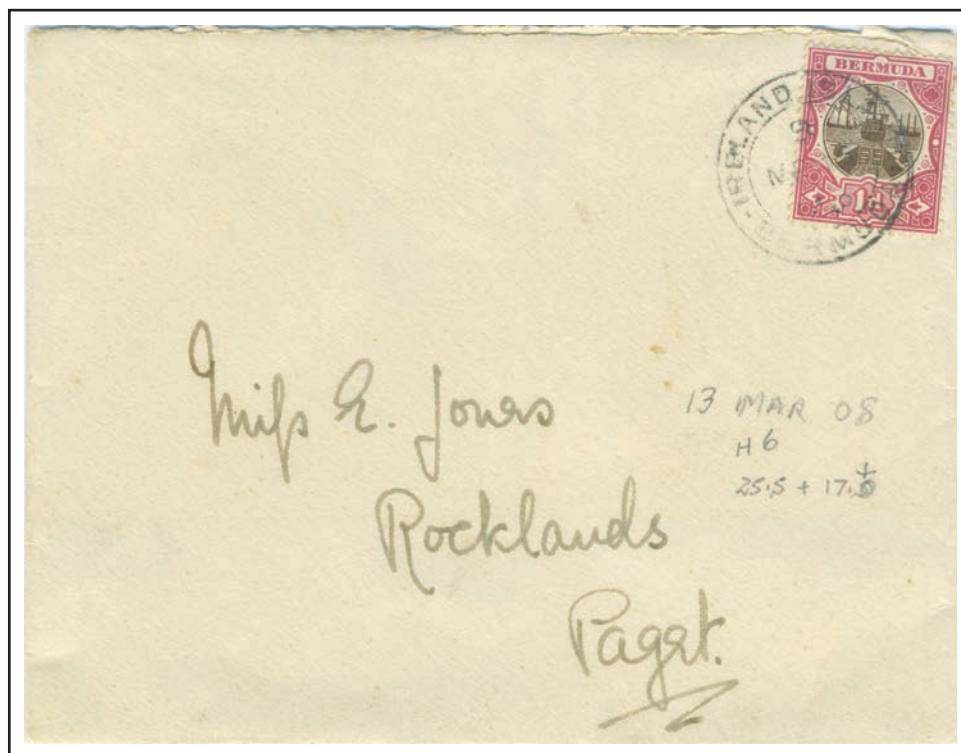


Sent to
SOUTH AFRICA

Initial Values
One Penny

1d local rate

Watermark Multiple Crown & CA



Ireland Island to Paget



From and to Hamilton

**Initial Values
Three Pence**

DIE PROOF - FRAME



8 examples recorded.



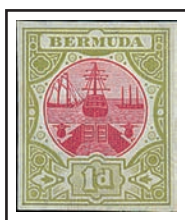
3 examples recorded.



DLR striking book record showing die withdrawn on May 29 to produce a plate with 240 images, returned on July 14, 1903

Initial Values Three Pence

COLOUR TRIALS



Crimson
& sage-green



Issued color



Purple
& sage-green

Fugitive Inks.

Date 19 lbs. oz. No. 2105 Colour *Brill. Rosa & Sage Green.*

3d Bermuda Post.

DLR recipe for 3d purple and sage green

SPECIMEN - Samuel D12 and varieties

ISSUED STAMP

Watermark Crown & CA

Printings: Two

Number of stamps: 74,160

Sheet Format: sheets of 240 in 4
panes of 60

Usage: British Empire rate

Comment:



Aniline magenta
& sage-green



Position 17
Club foot on M



Position 23
Spur on M

Initial Values
Three Pence

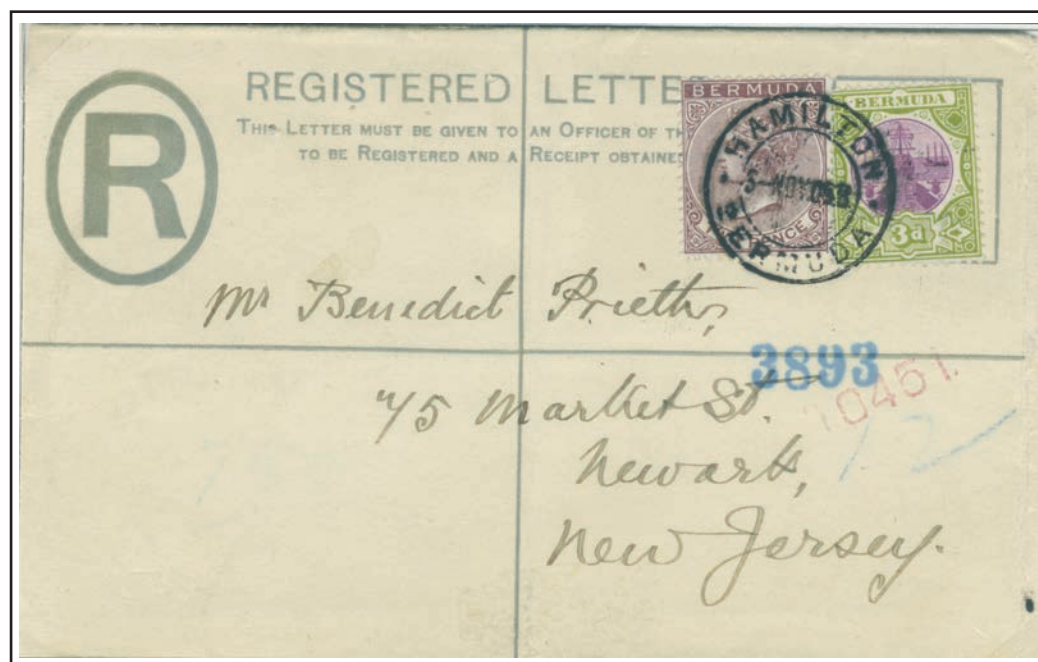
Watermark
Crown & CA



5th and 6th rows are folded behind

**Initial Values
Three Pence**

Watermark Crown & CA



Double 2½d UPU foreign rate on dock issue registered envelope



The second value issued was the 3d magenta and sage-green in November 1903. Here it was used with a 1d brown and carmine to frank a registered 1oz envelope addressed to London, Ontario. The Imperial postage rate was 2d as was the registration fee. The adhesives were cancelled in St George's on 19th December 1903. The cover was carried to New York by Quebec Stean, arriving on the 22nd and then went overland by train to London arriving on Christmas Eve

New Values One Farthing

DIE PROOF - FRAME

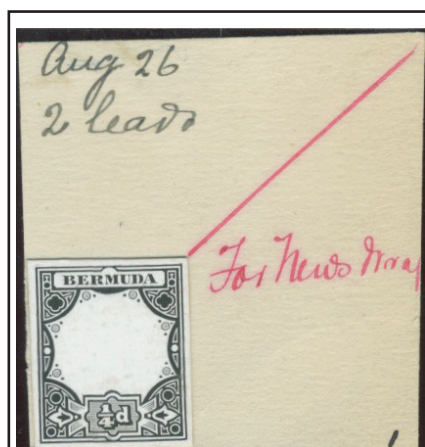
The Die Proofs for the ¼d were prepared in 1902 for newspaper wrappers. This die, 3 years later, was then used to produce the images on the plate used to print the stamps.



7 examples recorded.



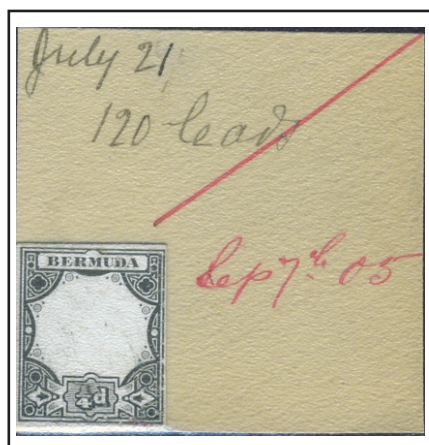
4 examples recorded.



Ex De la Rue record book showing a plate of 2 images was made in 1905 for producing newspaper wrappers. the ¼d stamp was not issued until 1908.

New Values One Farthing

DIE PROOF - FRAME



Ex De la Rue showing a plate of 120 images was made in 1905 although the 1/4d stamp was not issued until 1908.

Printings: One

Number of stamps: 368,640

Sheet Format: sheets of 240 in 4 panes of 60

Usage: Local newspaper rate

Comment: Unknown used at the official rate as postal stationary wrappers used in its place.

The newspaper die was then used to produce the plate of 120 stamps for the for the 1/4d stamp as shown on the piece ex De la Rue below. No other full die proofs are known.

COLOUR TRIALS



The colour trial with the brown vignette and yellow-orange frame had the center removed and placed within that of the violet frame to produce the colour combination that was approved in 1905 for the 1/4d stamp. Shown on the Appendix sheet on page 5.



DLR recipe for 1/4d brown and purple

New Values One Farthing

Watermark Multiple Crown & CA

SPECIMEN - Samuel D12 and varieties

Watermark Multiple Crown & CA



Brown &
purple



Pos 17
Clubbed foot
of M



Pos 44
Dots in M
and E



Mauve specimen
Natal PO



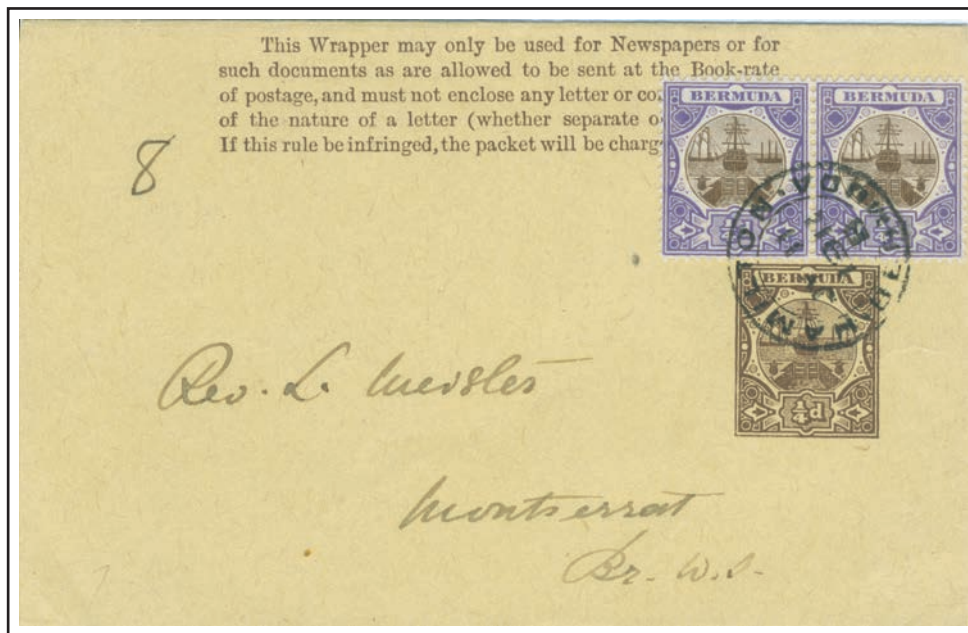
ULTRAMAR
Portuguese PO

ISSUED STAMP



September 1908 - One printing
368,640 stamps

New Values One Farthing



1/4d newspaper wrapper used to **MONTSEERRAT** uprated with 2 farthing stamps, underpaying the 1d Empire rate.

1d postcard rate



The farthing brown and violet was issued in September 1908. Unless it was used in multiples its use was restricted to domestic newspapers. In this case a pair was used on an overseas postcard to **Willowmere in South Africa**. the rate was actually 1d and the card should have been taxed. It was cancelled in St Georges on 11th December 1908 and was carried by the Bermudian to New York. it arrived in the Cape on 14th January 1909.

New Values - 2d, 2½d, 4d

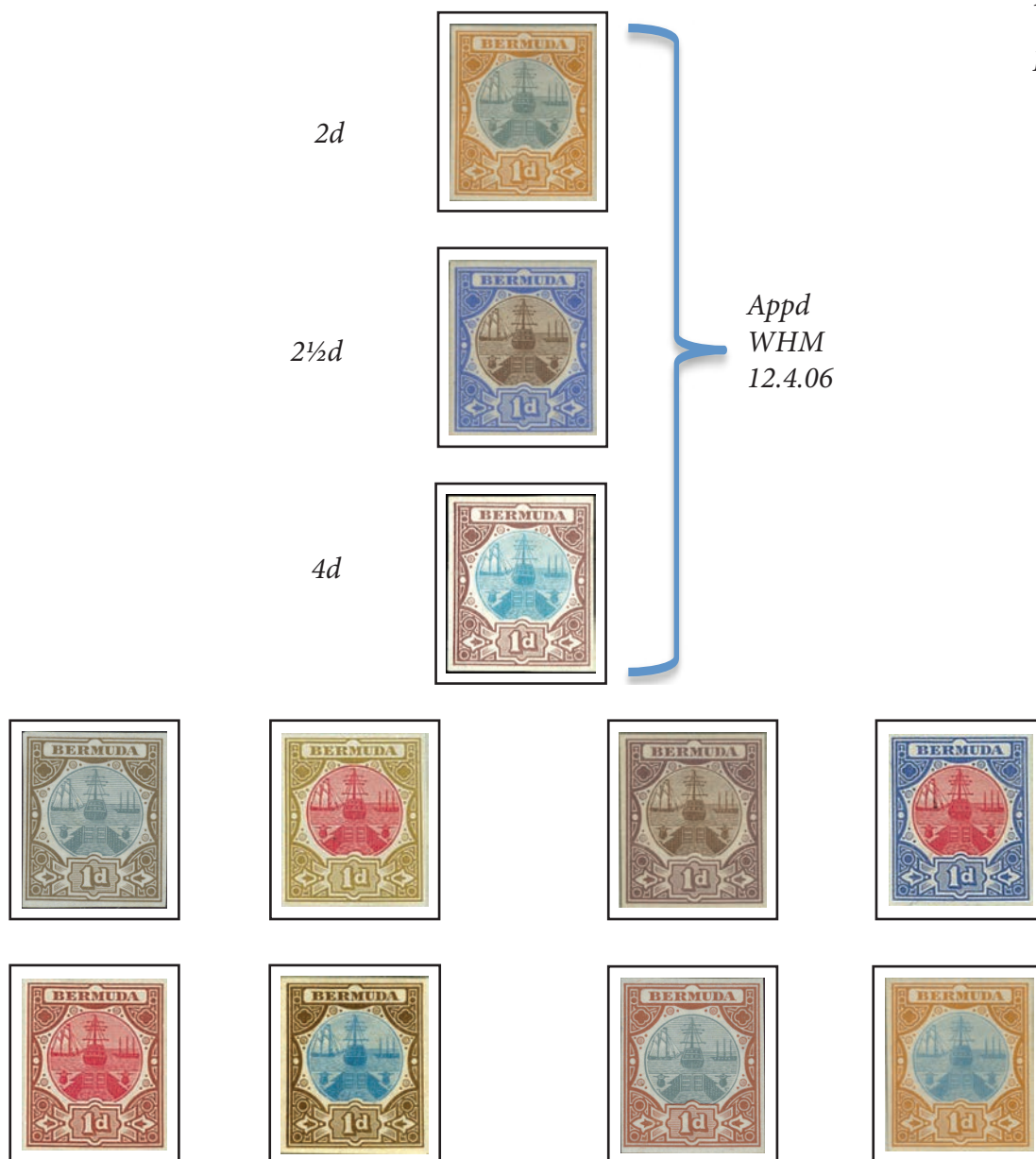
COLOUR TRIALS - APPENDIX SHEET

Reconstruction of the original Appendix sheet with the colour selected for the 1½d initialed by Sir William Mercer. This appendix sheet has been reduced such that only the top three trials are still together.

6th April 1906.

Bermuda

Reg 31/06



6 examples of which one is on the appendix sheet and a pair in the RPC

A total of 24 colour trials were produced with 6 colours for the vignette and 4 for the frame, of which 11 are on the appendix sheet with the 3 values approved by Sir William Mercer. Other than the right pairs in the Royal Philatelic Collection these do not exist with any margin. Colours and numbers are as per the manuscript notations from the RPC pairs.

2- grey and orange, 16 brown and azurline, 21 p ant and L telegraph, 6 grey and burnt umber, 7 1d red and 25c Ceylon, 17 Dark brown and L telegraph, 11 1d red and azurline, 9 1d red and light brown, 22 P ant and burnt umber, 1 grey and light brown, 19 P Ant and Orange

Copies of the other 13 colour trials still exist with the right hand pair in the RPC. Many of these exist with the top and/or bottom margins. The number and writing is as per the original pencil inscriptions.

Only one of each exists with the plate number.



2. Grey &
£ Tele(graph)



4. Grey &
25c Ceylon



8. 1d red &
Orange



10. 1d red &
Burn Umber



12. 1d red &
£ Tele(graph)



13. Dark brown &
light brown.



14. dark brown
& Orange



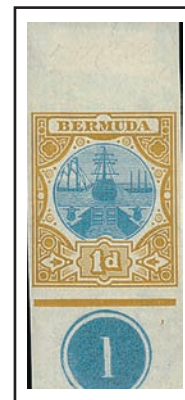
15. d. brown
& 25c Ceylon



18. d brown &
B. Umber



20. P. Ant &
Lt brown



23. P Ant &
25c Ceylon



24. P. Ant &
Azurline

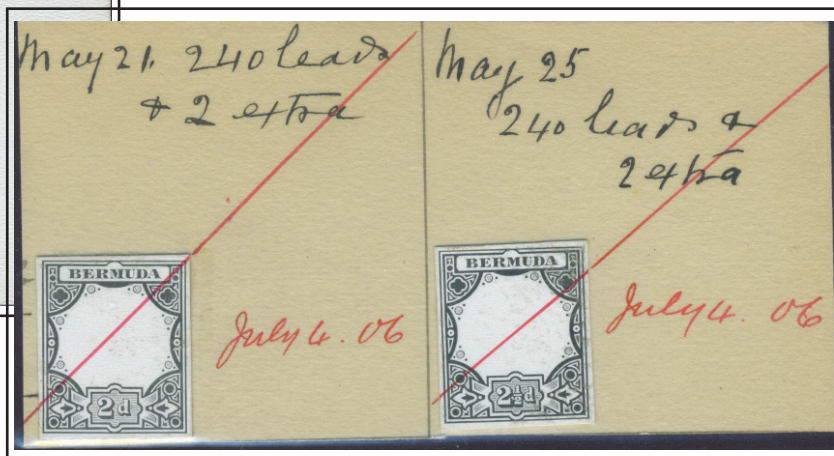
Layout of colour trial sheet.



Margins and overlapping of the watermark assist to determine the correct order in the above reconstructed strip. The final stamp with a diagonal cut on the bottom right matches a pair in the Royal collection that has a margin on the left verifying that there are 6 of each colour trial and that the plate number is at position 2 as on the issued stamps.

New Values
Two Pence




DIE PROOF - FRAME



Only recorded example.

No "After Hardening" die proofs are known.

Copies of the cut down "After Hardening" dies that were used on the plate to produce 240 copies for the sheets of both the 2d and 2 ½d stamps

Date	19	lbs.	oz.	No.	2104	Colour	Grey & Orange.
				2 ^d Bermuda Post.			
							
				2468 Bermuda Post 2 ^d 1906 SG27 Grey Milori Blue Black Purple Zinc White Duty Cadmium Yellow Azarim Red Phosphine			
				Grey & Orange 2104			

DLR recipe for 2d grey and orange

New Values Two Pence

Watermark Multiple Crown & CA

Printings: One

Number of stamps: 70,560

Sheet Format: sheets of 240 in 4
panes of 60

Usage: Registration fee

SPECIMEN - Samuel D12 and varieties

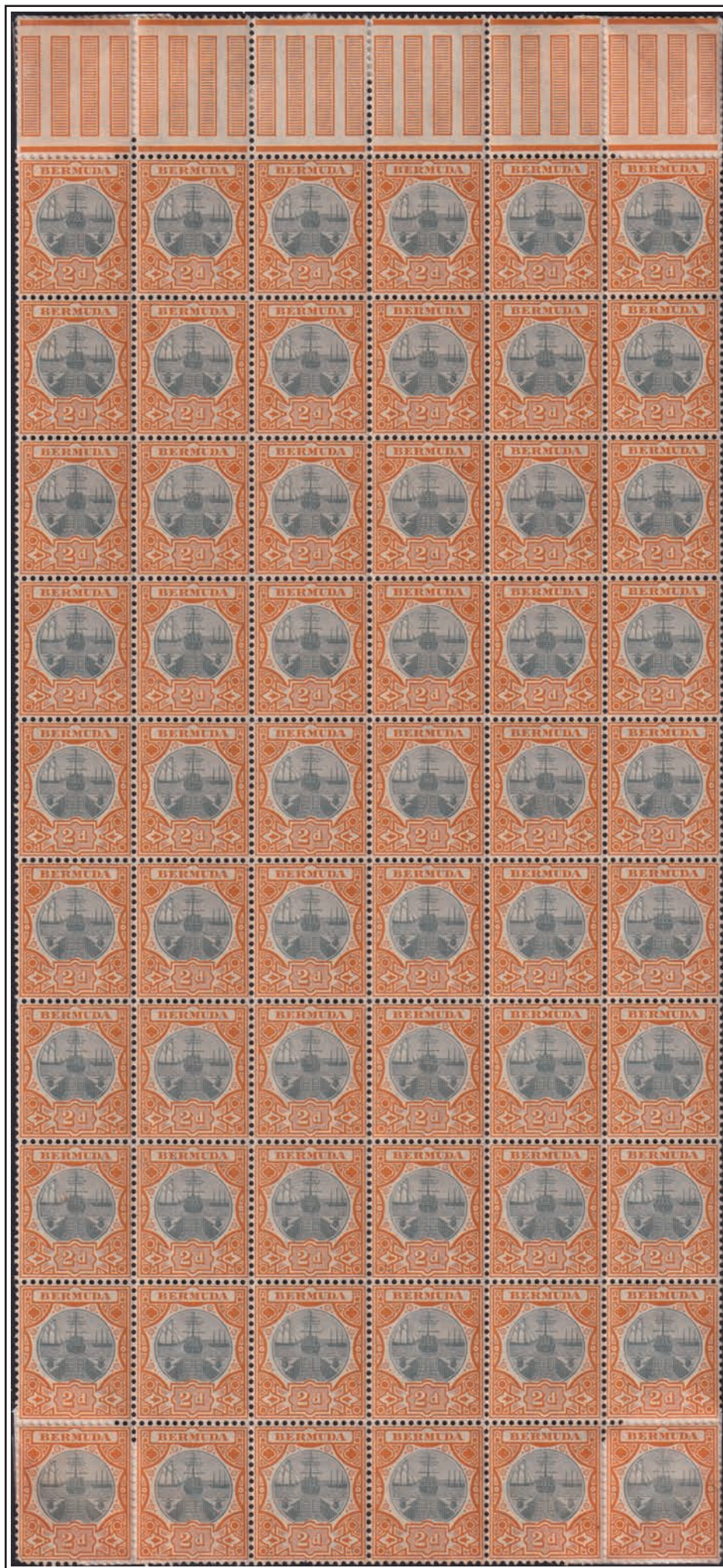


Pos 17
clubbed foot
on M



Pos 41
broken M

It is unknown why DLR started
using the shading between the
vertical panes on the new value
between 1905 and 1910



New Values
Two Pence

Watermark Multiple Crown & CA



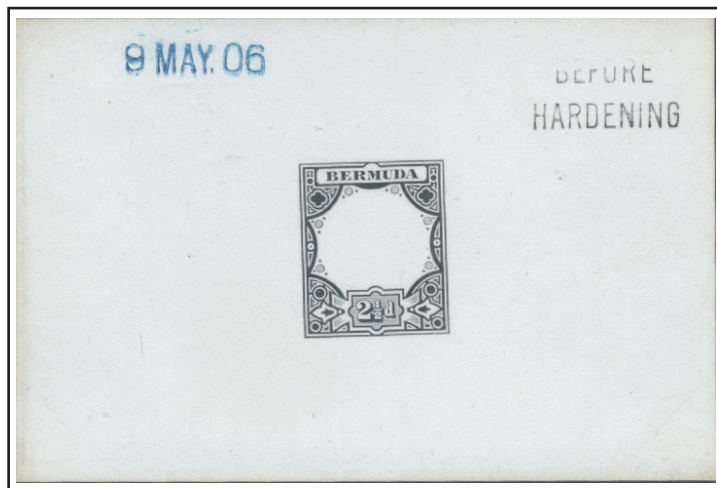
2½d rate plus 2d registered fee





2½d UPU rate to foreign countries

New Values
Two Pence Halfpenny

Watermark Multiple Crown & CA



3 examples recorded, one of which is in the Royal Philatelic Collection. There are no known examples of "After Hardening".
 ex Ludington

Date..... 19	lbs.	oz.	No. 2106	Colour <i>Brown & Blue</i>
 				
<i>2 1/2 Bermuda Post.</i>				

DLR recipe for 2½d brown and ultramarine

Printings: One
Number of stamps: 489,120
Sheet Format: sheets of 240 in 4 panes of 60
Usage: Non Empire rate
Comment:

SPECIMEN - Samuel D12 and varieties



Pos 17
clubbed foot
on M



Pos 41
broken M



Pos 44
Dots in M
and E

New Values
Two Pence Halfpenny

Watermark Multiple Crown & CA

P.O.—No. 17.

PARCEL POST.

CERTIFICATE OF POSTING OF A PARCEL.


A Parcel prepaid 1 s. 0 d., and addressed as under, has been posted here this day:—

Albert Sophomian
Urmag

Received a Fee of 5 s. 0 d. for insurance of Parcel for a Sum not exceeding* £ One Pound s. 0 d.

*State in words the number of pounds
Alfred Postmaster's Signature.

Consecutive }
Number. } 7



5d insurance payment for £1 value of a parcel



Envelope to **Austria** at the 2½d UPU rate to foreign countries

New Values
Two Pence Halfpenny

Watermark Multiple Crown & CA



Double 2½d UPU rate to foreign countries, plus 2d registration fee

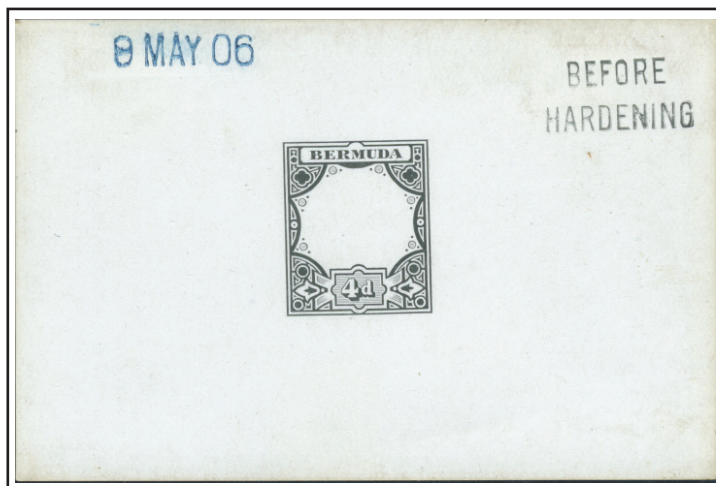


Double 2½d UPU rate to foreign countries, however under paid by 1½d

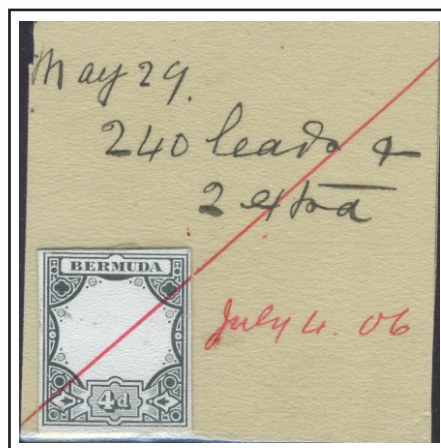
New Values Four Pence

Watermark Multiple Crown & CA

DIE PROOF - FRAME



3 examples recorded, one of which is in the Royal Philatelic Collection.
There are no known examples of "After Hardening".



Ex De la Rue showing a plate of 240 stamps was made to print the issued stamps

Date	19	lbs.	oz.	No.	2107	Colour	Blue & Chocolate
				<i>4d Bermuda Post.</i>			

DLR recipe for 4d light blue and purple brown

SPECIMEN - Samuel D12 and varieties



Printings: One
Number of stamps: 72,000
Sheet Format: sheets of 240 in 4 panes of 60
Usage: No rate from Bermuda
Comment:

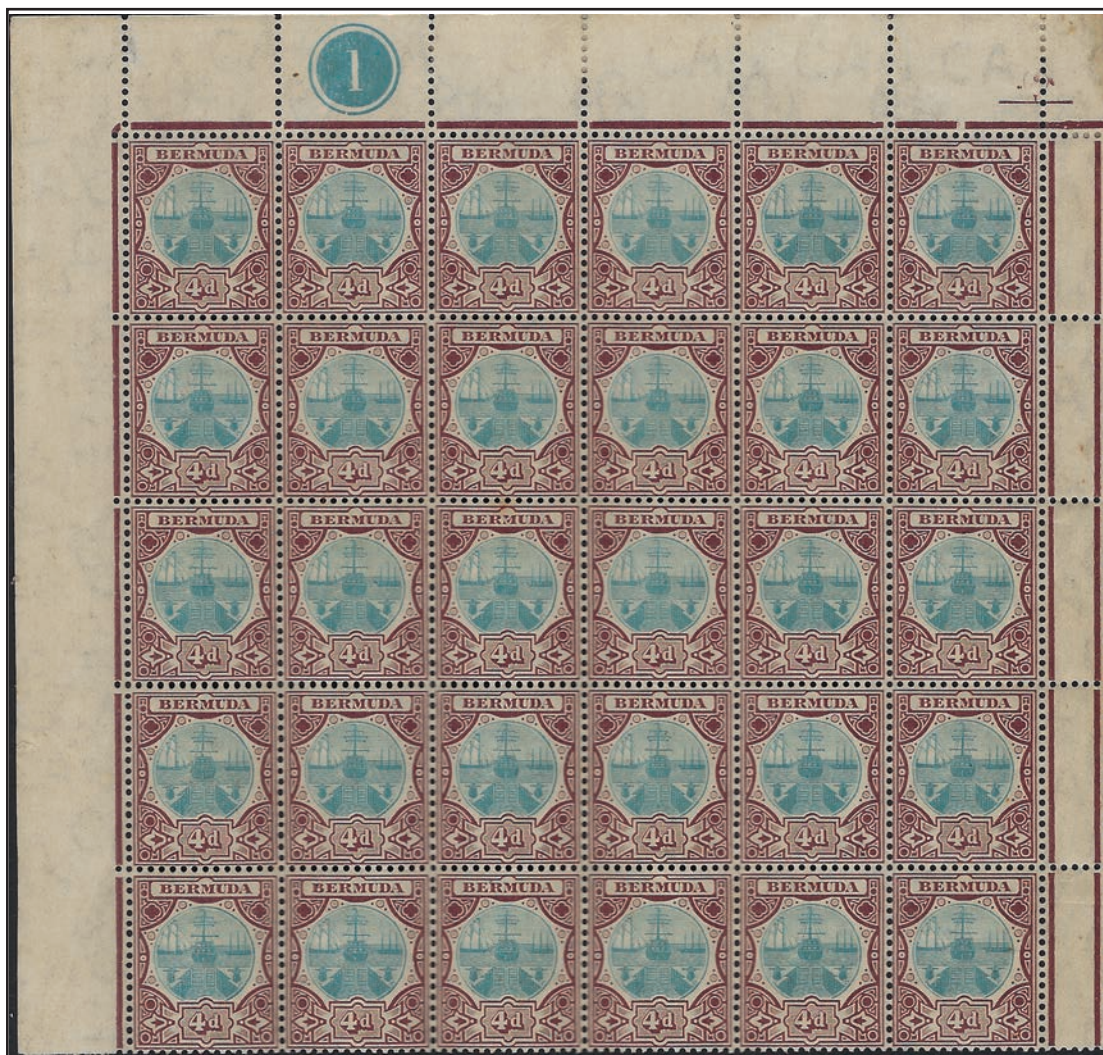
ISSUED STAMP



Pos 17
clubbed foot
of M

New Values
Four Pence

Watermark Multiple Crown & CA



**New Values
Four Pence**

Watermark Multiple Crown & CA



A cover addressed to **Ralangi, Kistna in India**. It was franked 4d from the Dock issue and a 1d stamp from the Ship issue, overprinted War Tax. these paid a 1oz Imperial rate , the 2d Registration Fee and the War Tax. These stamps were cancelled in Hamilton on n indeterminate date, but the cover was backstamped in Ralangi on 23rd June 1919.

It was the redirected to Ariplicane? in Maras, arriving two days later



Double 2½d rate plus 2d registered fee, short paid by 1d

U.P.U Colours
Half Penny

Watermark Multiple Crown & CA

Printings: Two
Number of stamps: 366,960
Sheet Format: as before
Usage: Local postcard rate
Comment: UPU colours



Ultramar
Portuguese PO



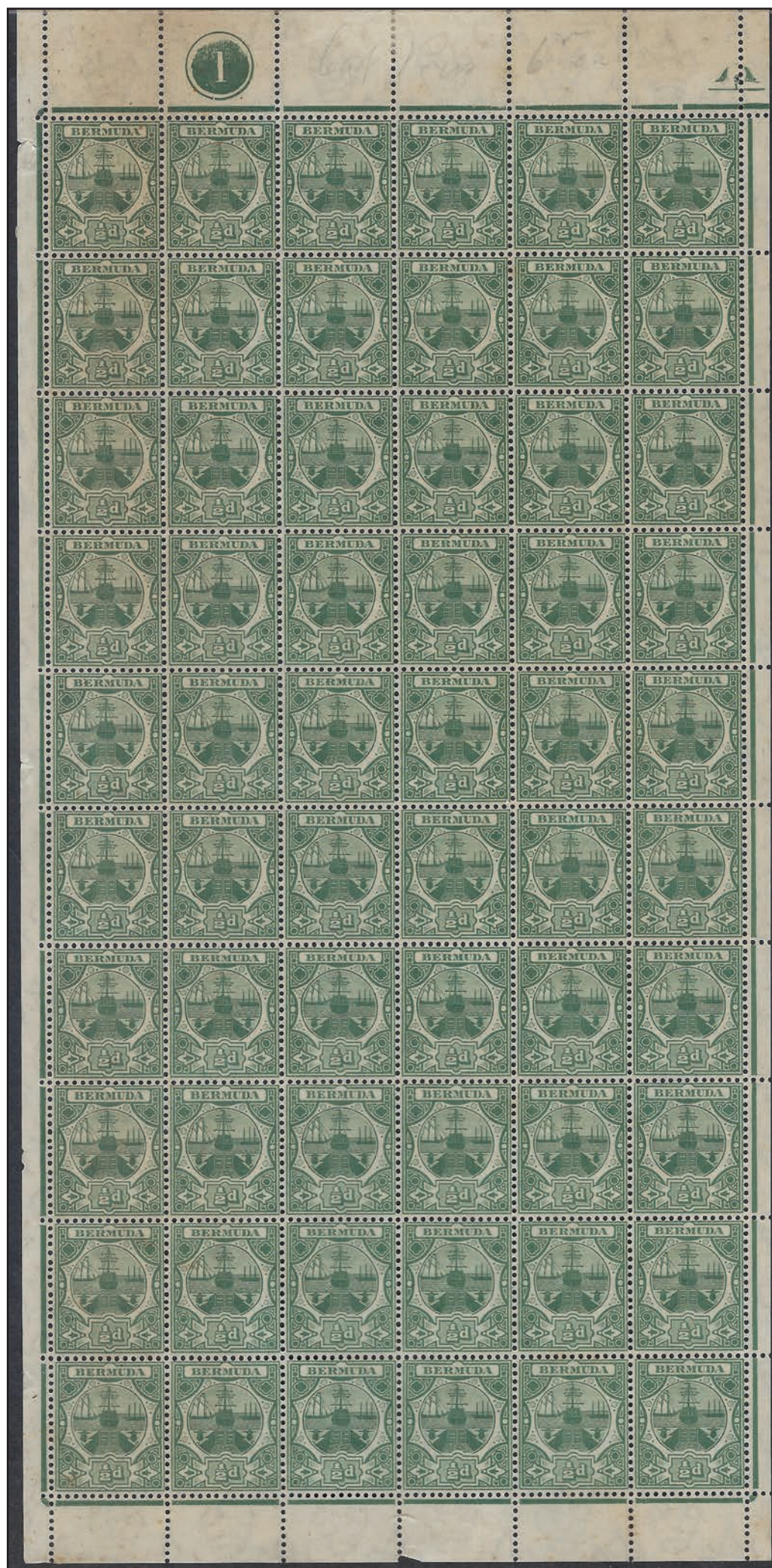
Green



Blue-green

U.P.U Colours
Half Penny

Watermark Multiple
Crown & CA



**U.P.U Colours
Half Penny**

½d postcard rate to
foreign countries
without a message

Watermark Multiple Crown & CA



1d postcard rate to
foreign countries
with a message



2½d UPU rate to foreign countries

**U.P.U Colours
One Penny**

Watermark Multiple Crown & CA



Pos 23
Spur on M



Pos 44
Dots in M
and E

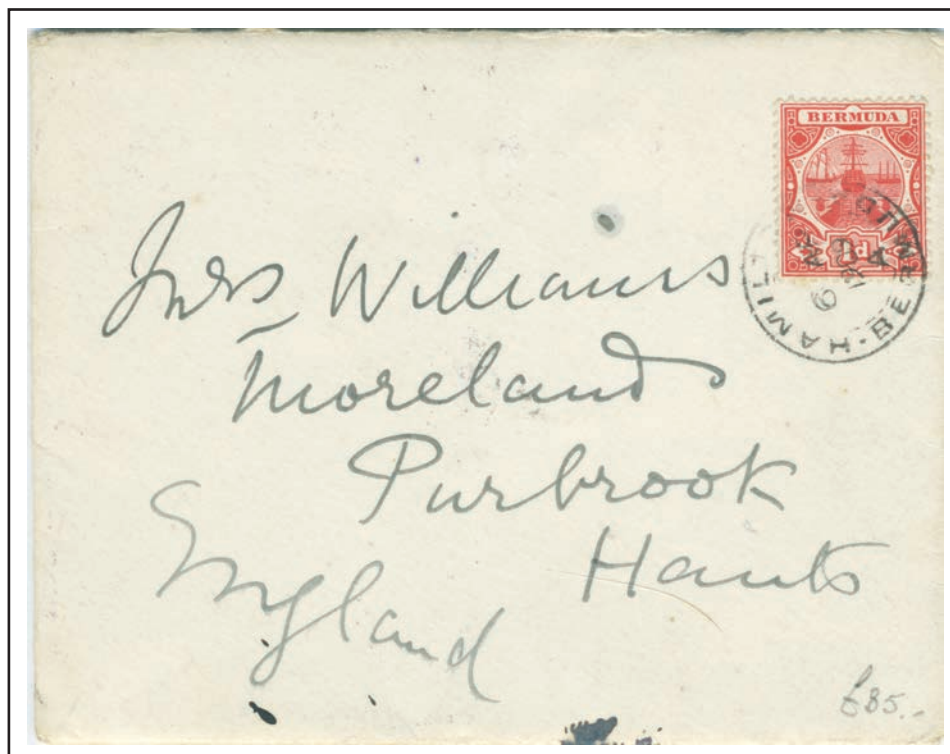
Printings: Two

Number of stamps: 1,465,920

Sheet Format: as before

Usage: Local postcard rate

Comment: UPU colours



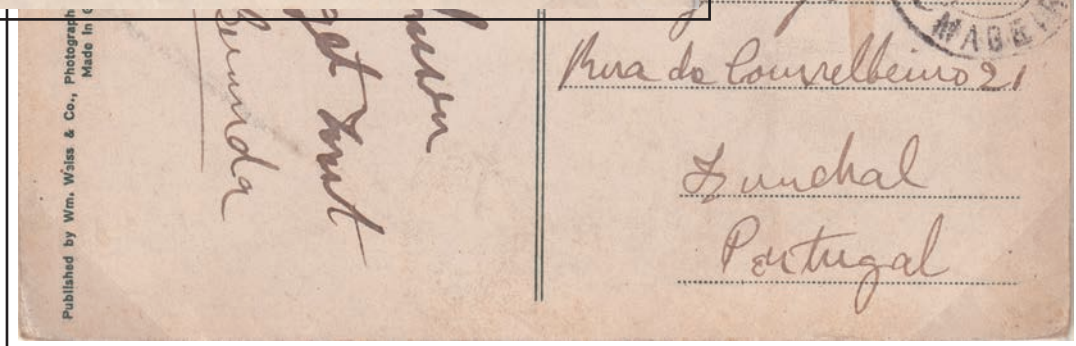
1d Empire rate to England

**U.P.U Colours
One Penny**

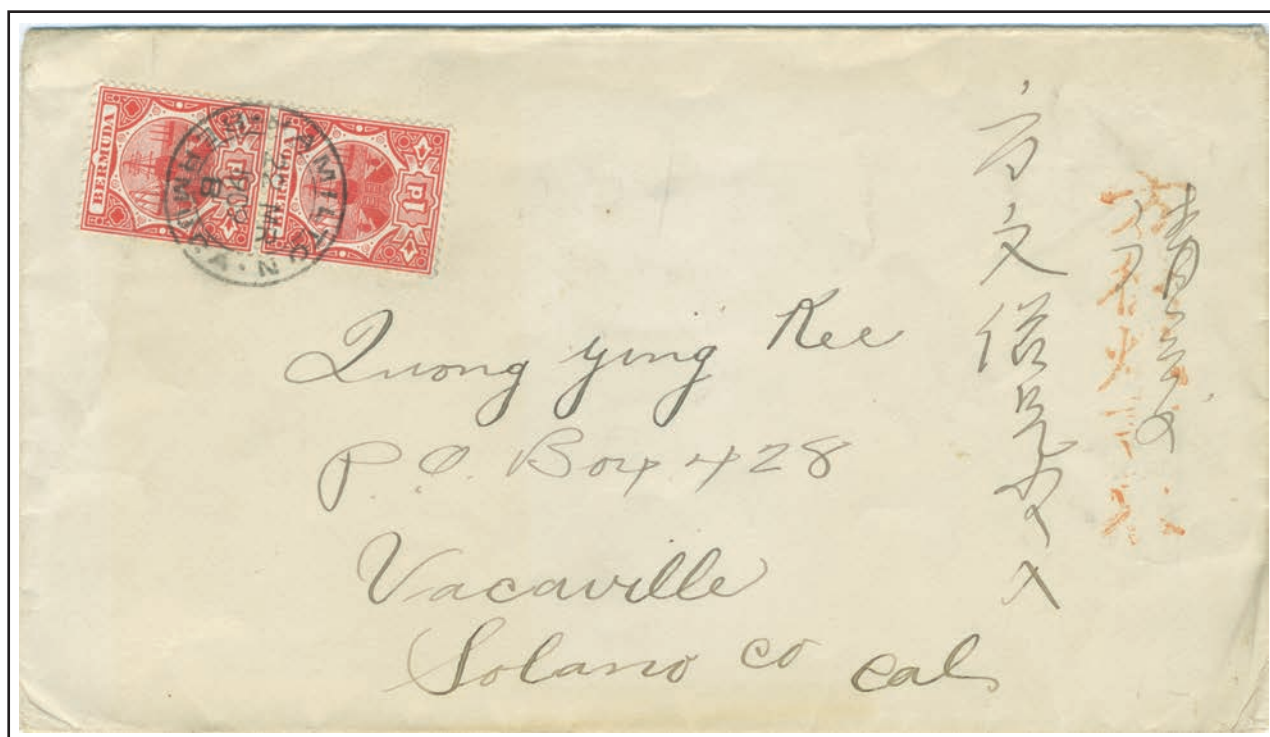
Watermark Multiple Crown & CA



Underpaid 2 1/2d rate
to **SWITZERLAND**
Taxed 30c for double
1 1/2d shortfall.



1d postcard rate to
PORTUGAL



Double 1d UPU rate to California

U.P.U Colours Two Pence Halfpenny

Watermark Multiple Crown & CA

Printings: Two

Number of stamps: 488,640

Sheet Format: sheets of 240 in 4 panes of 60

Usage: Non Empire rate

Comment: UPU colour

Watermark Multiple Crown & CA



Pos 17
clubbed foot
of M



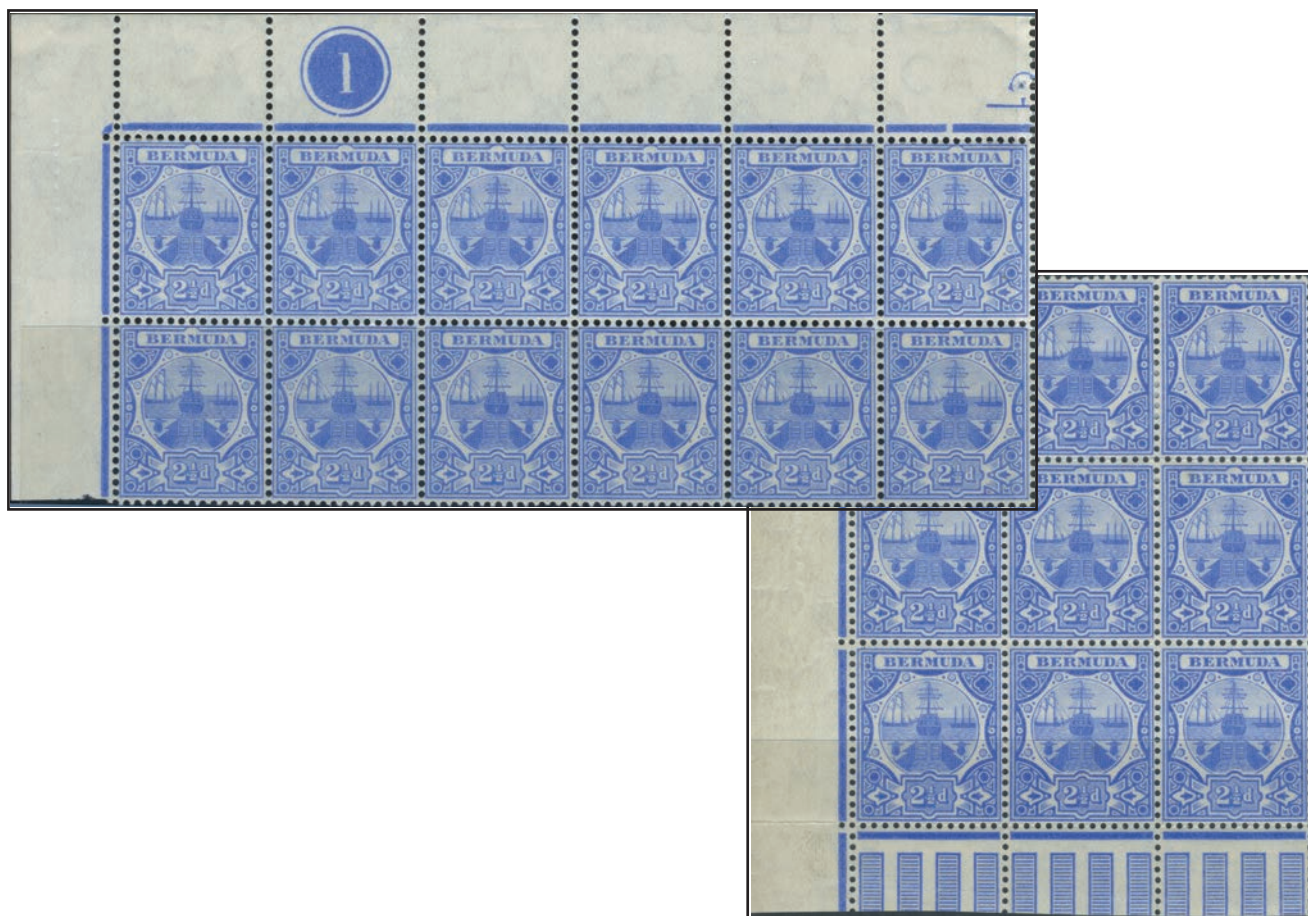
Pos 41
break left
leg of M



Pos 44
spur on M
and E

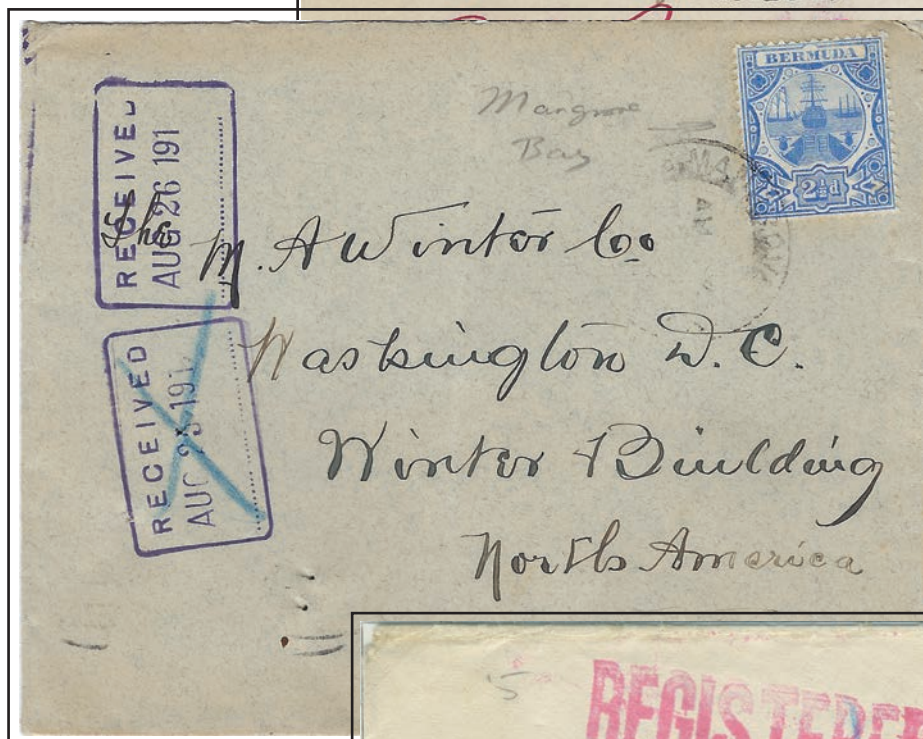


Stamped "specimen" in
mauve by the Natal PO



U.P.U Colours
Two Pence Halfpenny

Watermark Multiple Crown & CA



2½d UPU rate plus 2d registered fee