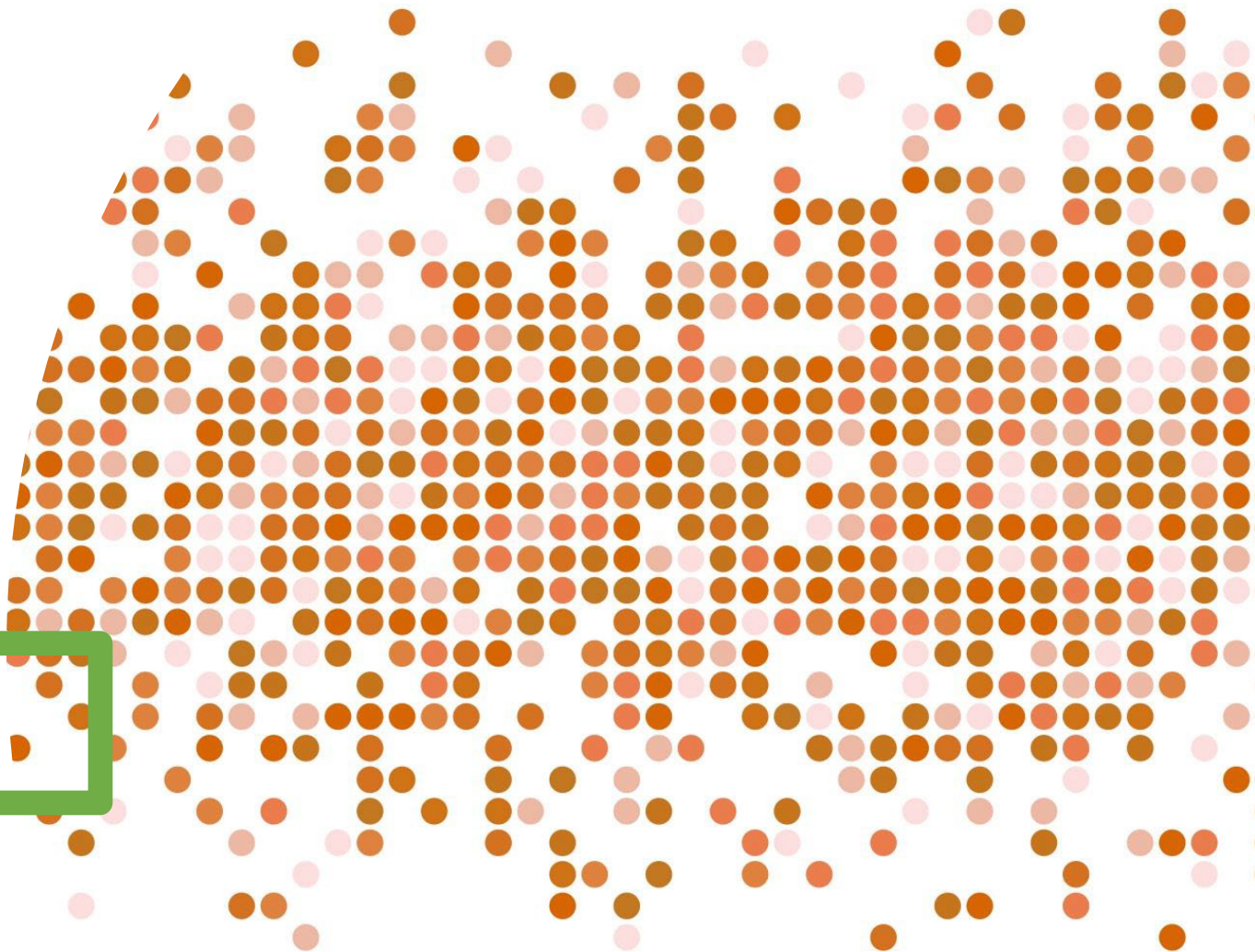
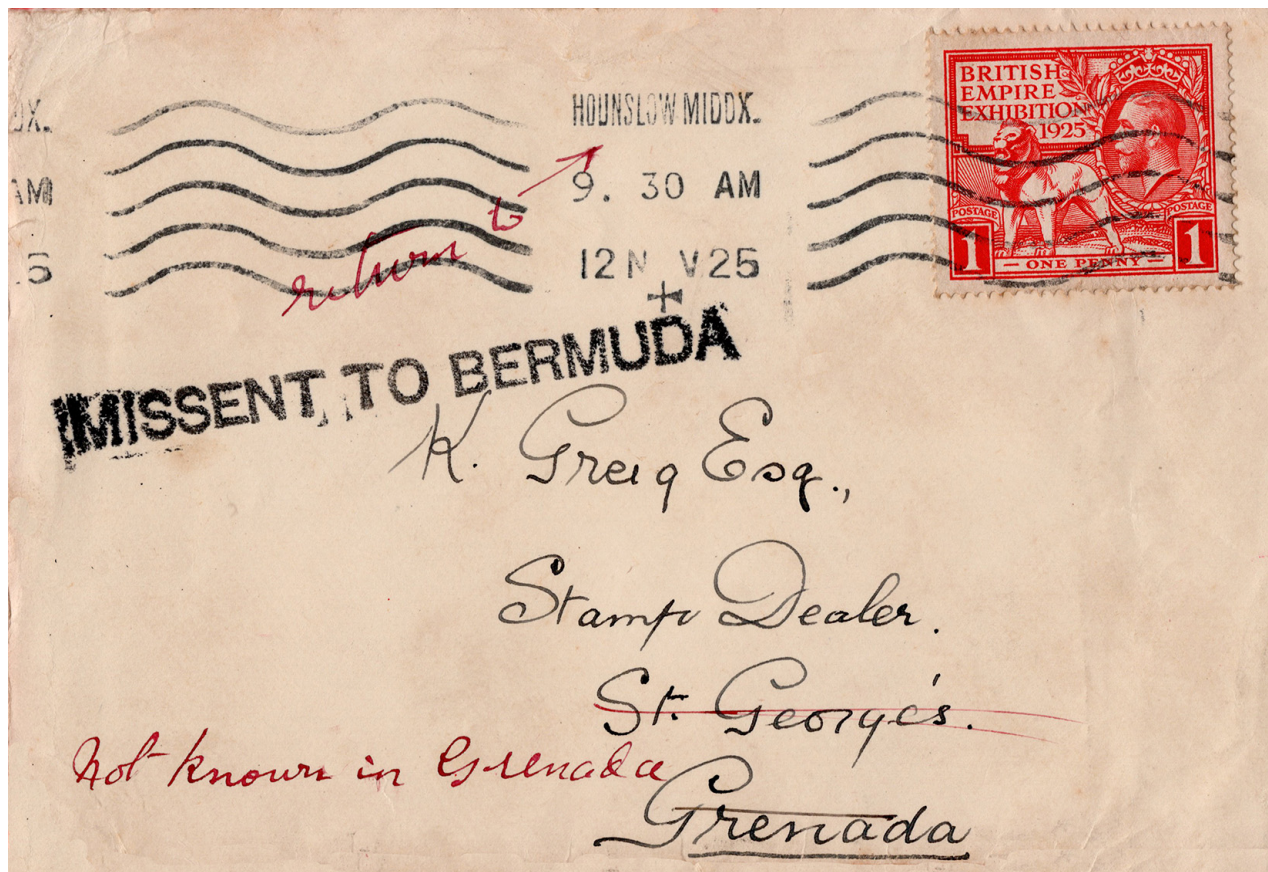


# Missent Mail of Bermuda

Years ago, the most common cause of missent mail were letters ending up in the wrong mailbag and being sent to the wrong address, sometimes halfway around the world. With modern mail sorting equipment, an incorrect zip code may also be the cause of a letter going astray.

Bermuda's MISSENT markings are of course applied to mail sent to the island by mistake, however, mail intended for Bermuda, but sent elsewhere, also has a place in a collection of Bermuda postal history.

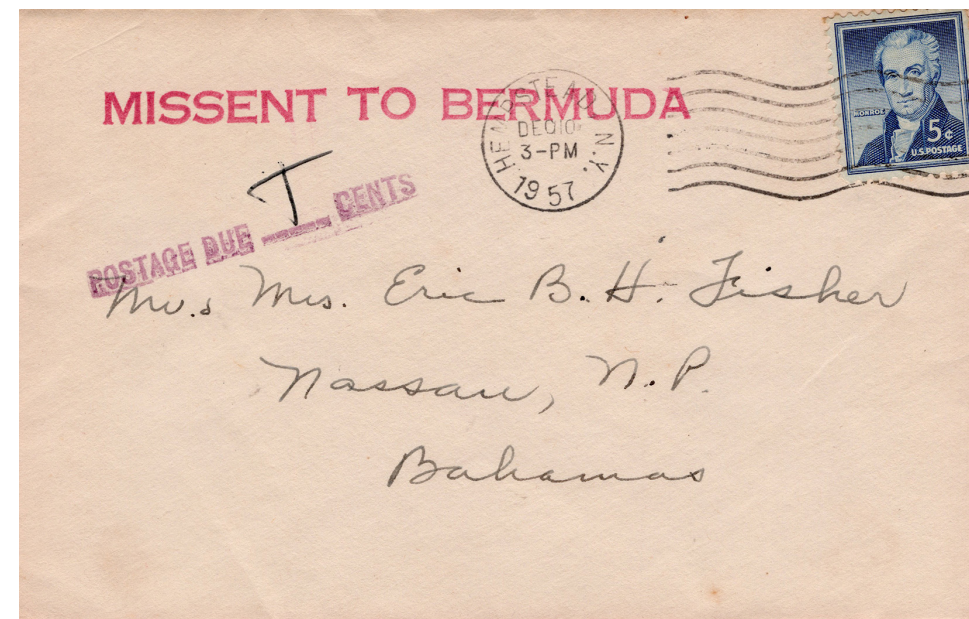
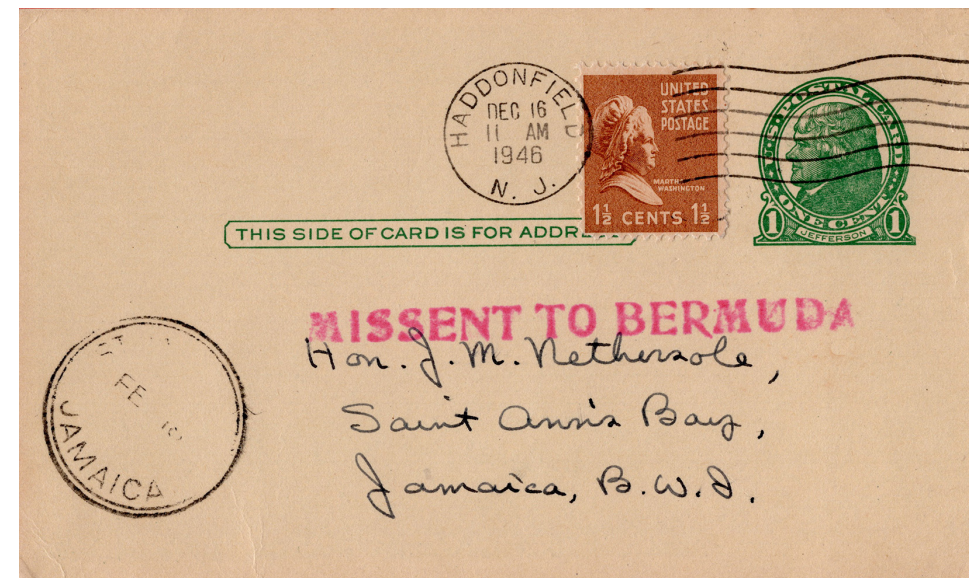




An early MISSENT TO BERMUDA mark on a letter sent to St. George's, Grenada. Although the Grenada Post Office instruction was to return the letter to the sender, a postal clerk was perhaps aware of a St. George's in Bermuda and thought otherwise.

Mixing up Bermuda with other islands to our south happens quite frequently, here with a U.S. postal card sent to Jamaica in 1946 ...

... and a letter to the Bahamas in 1957.





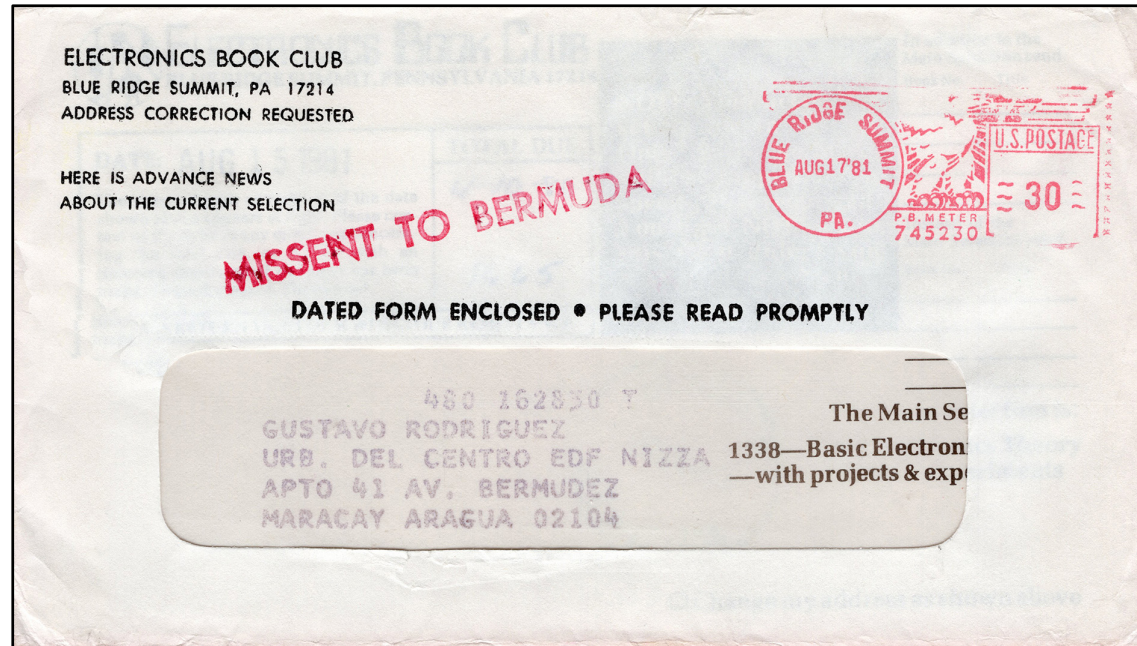
How an air mail letter sent from Colombia to British East Africa in 1959 ended up in Bermuda is not so easily explained.



More inter-island mixups – a 1963 letter sent from Grenada to Barbados ending up in the mailbag to Bermuda ...

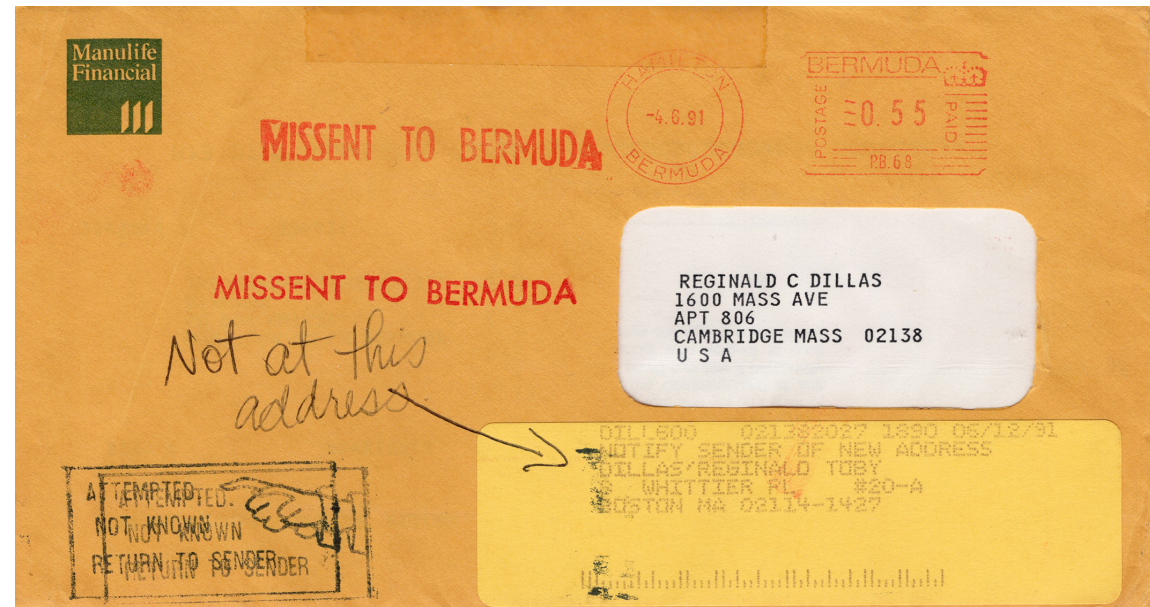


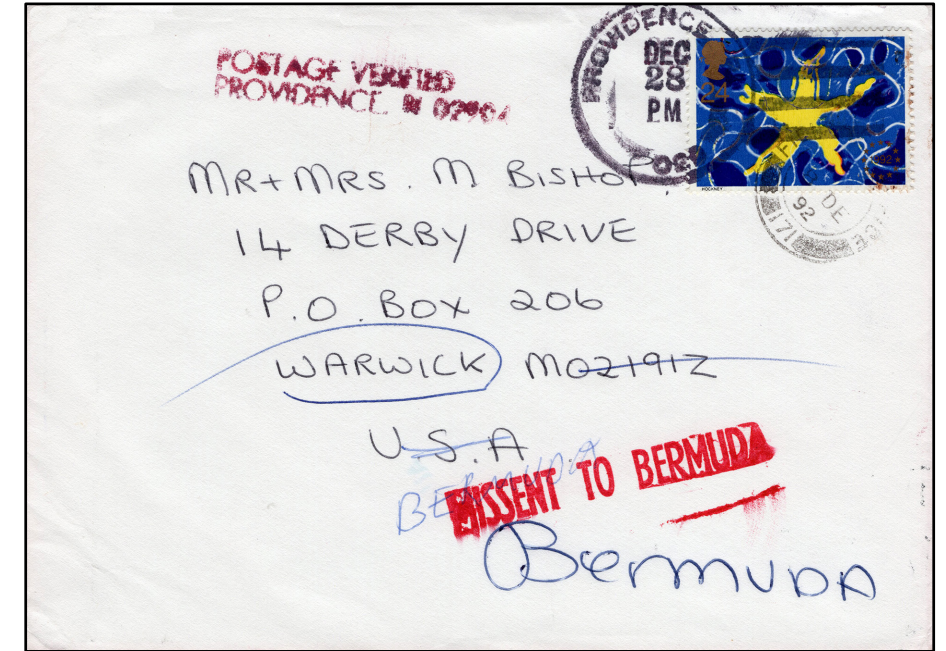
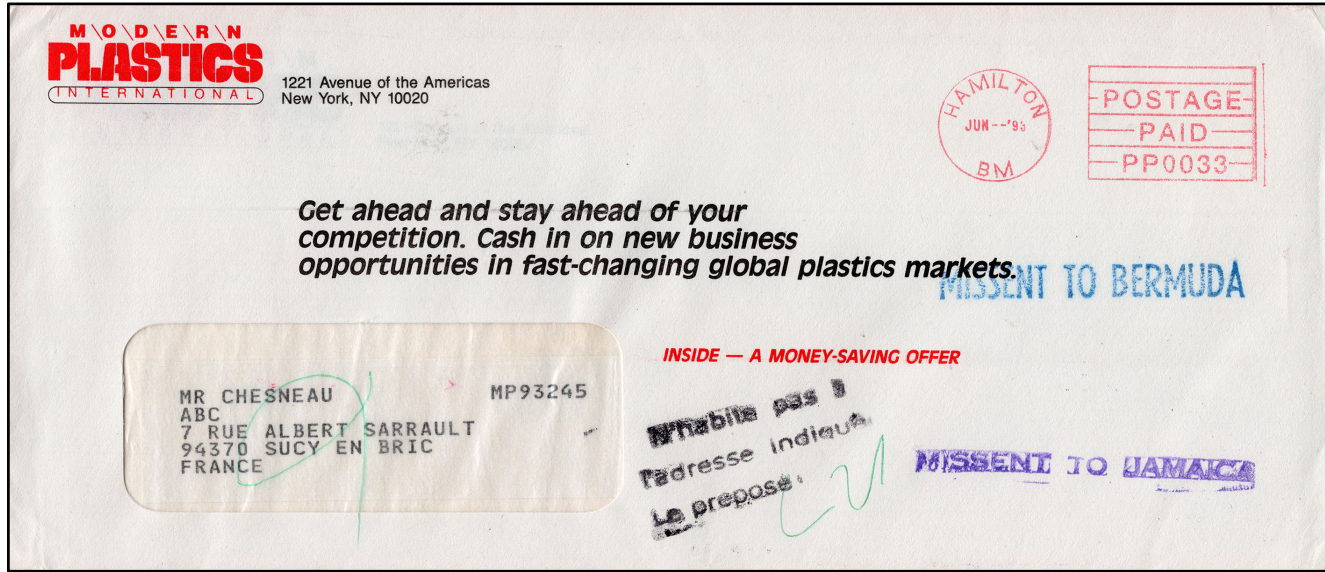
... and a letter from the Isle of Man to the Bahamas having the same fate in 1971.



A letter sent from the U.S. to Maracay in Aragua was unfortunately missing the country name Venezuela, however, with the addressee living in Av. Bermudez, the postal clerk took a chance in sending it to Bermuda, creating a rather neat Missent cover.

For a letter sent from Bermuda to the U.S. ending up with two different MISSENT TO BERMUDA MARKS is also rather unusual. The 1991 letter could not be delivered as addressed and as the forwarding address was out-of-date, the letter was returned to the sender. Bermuda's postal clerk obviously did not realize that it originated in Bermuda.



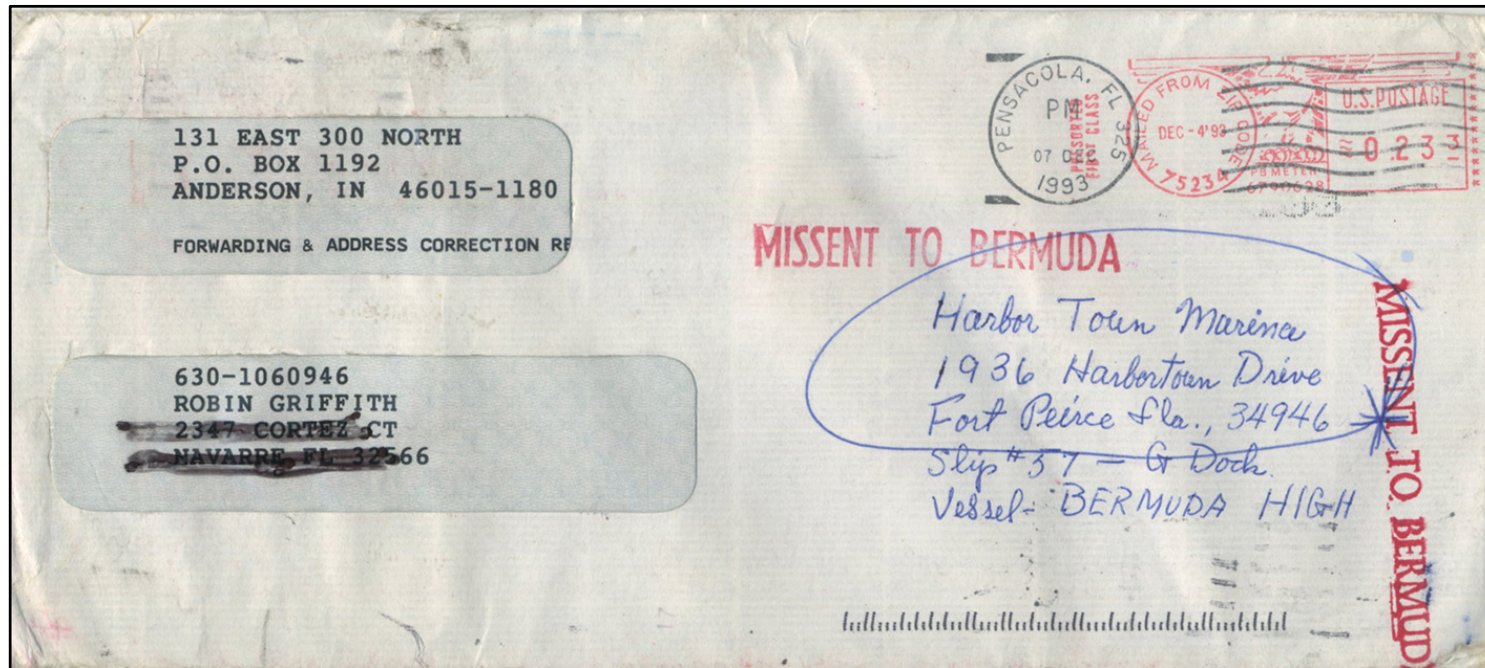


Direct Mail problems sometimes resulted in rather attractive Missent covers. In this case the postmark wasn't exactly clear that the letter originated in Bermuda. It not only got missent to Jamaica, but also receiving a MISSENT TO BERMUDA mark when finally returned to the island.

Sent from Saint John, N.B. to Montreal in 1993, this direct mail piece ended up in Bermuda because the sender operated a company based in Bermuda.



A letter sent from the U.K. to Warwick, U.S.A. in 1992 was obviously not properly addressed. As Warwick is located in Rhode Island, it was dealt with by the Providence Post Office who forwarded the letter to Warwick, Bermuda, definitely not the intended address.



The cover seems to have been addressed and forwarded to a crew member of the 'BERMUDA HIGH', based in Fort Pierce, Florida, in December 1993. Judging by the two dozen or so U.S. sorting machine marks and the four or five Bermuda Missent Marks, the cover must have been following the ships travels for many months.

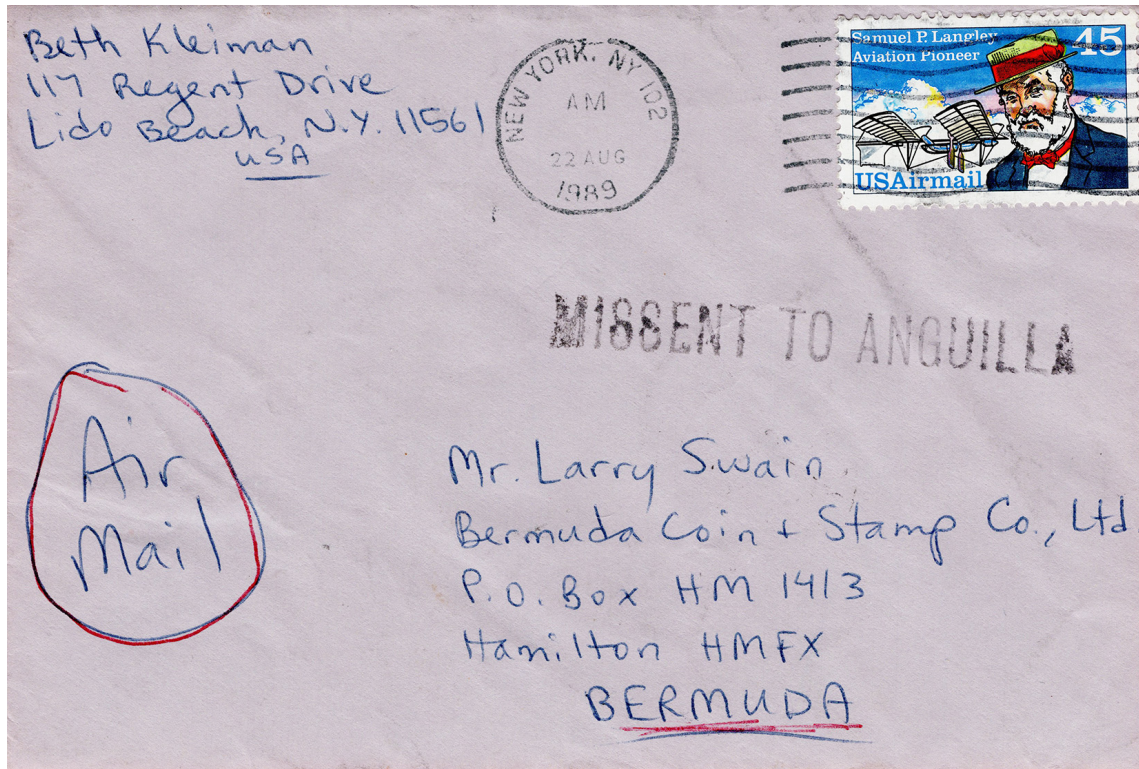


Bought for the 'MISSENT TO BERMUDA' marks – two different on one cover! – it turned out that the reverse was even more surprising. Barely readable, there are three machine cancels that appear to read 'MISSENT TO BERMUDA' with part of an 'A.M.F. BERMUDA' datestamp of both 1993 and 1994. When I asked the Bermuda Post Office for a better example, I was given the strike shown above right. A.M.F. stood for the Air Mail Facility, which was officially opened in October 1992 at Bermuda's airport. It was badly damaged during a hurricane in 2007 and in January 2010 reopened as the Bermuda Mail Processing Centre.



# Destination Bermuda, but Missent elsewhere

Most of the mail intended for Bermuda, but missent, ends up in one of the islands to our south, more than likely in the Bahamas. However, Bermuda mail has also been missent anywhere from St. George in Australia to Ho Chi Minh City in Vietnam. Here are some examples:



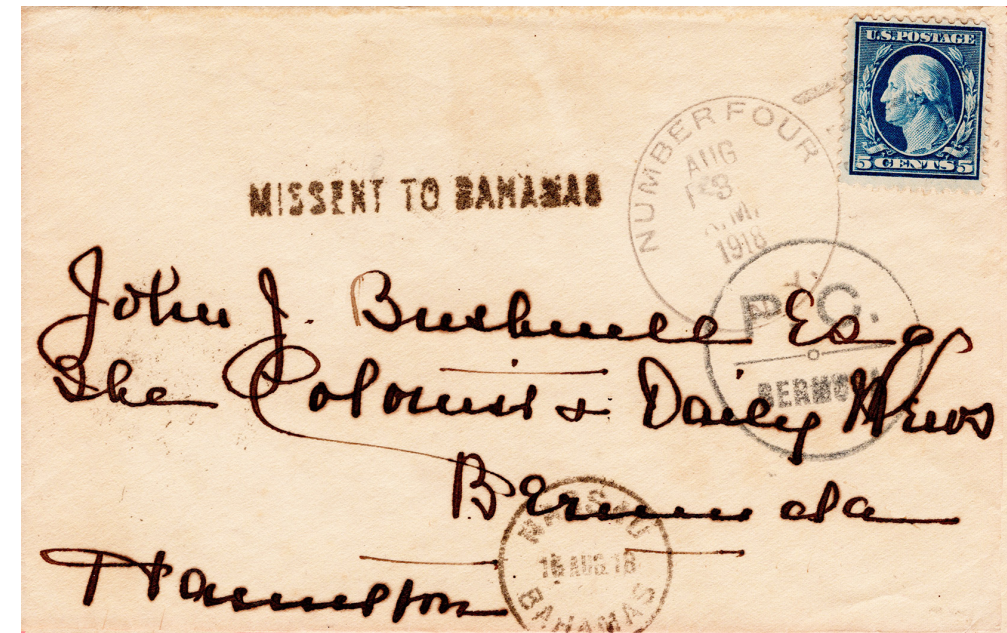
1989 U.S. to Bermuda, missent to Anguilla.



1994 U.K. to Bermuda, missent to Antigua.



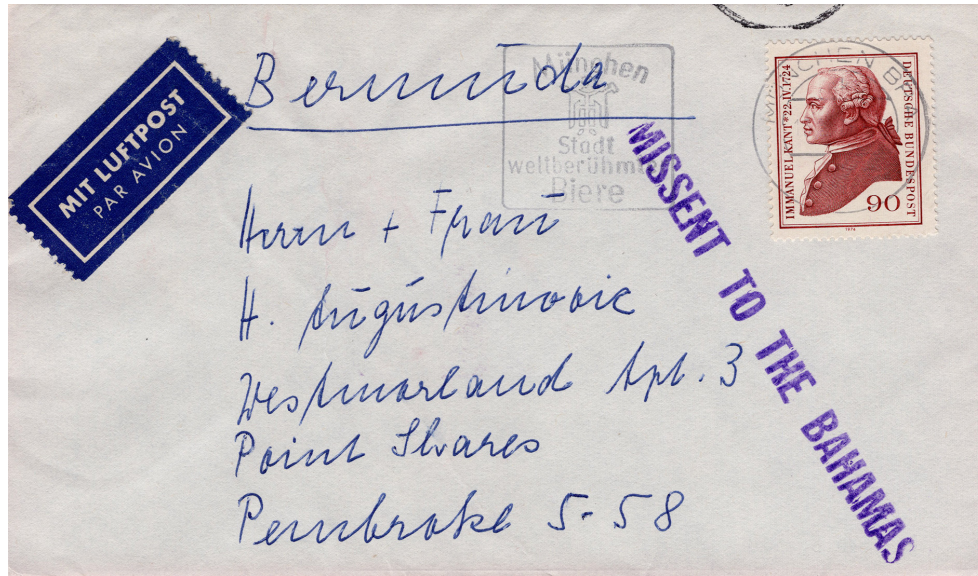
1898 U.S. to Bermuda, missent to the Bahamas. Obviously missent mail was nothing unusual in the Bahamas as they already had a handstamp made more than a century ago.



1918 again U.S. to Bermuda, addressed to J.J. Bushell, publisher of the 'Picturesque Bermuda' guide books, but missent to the Bahamas.

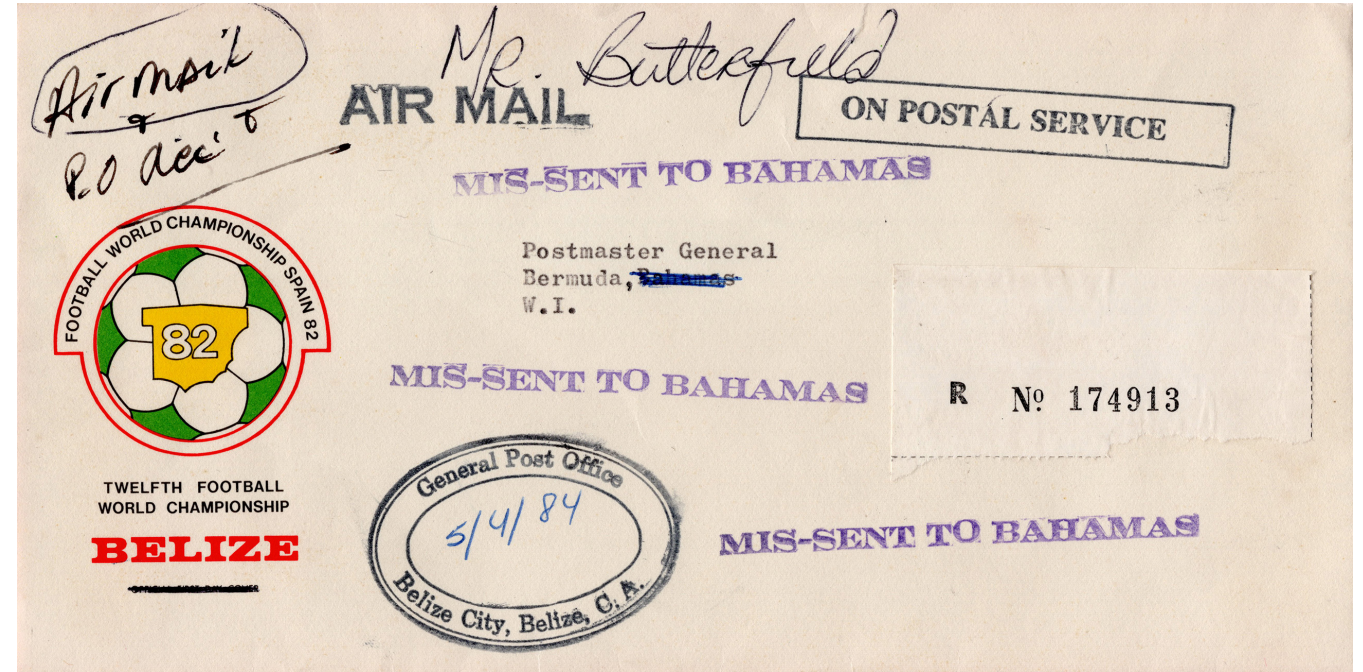
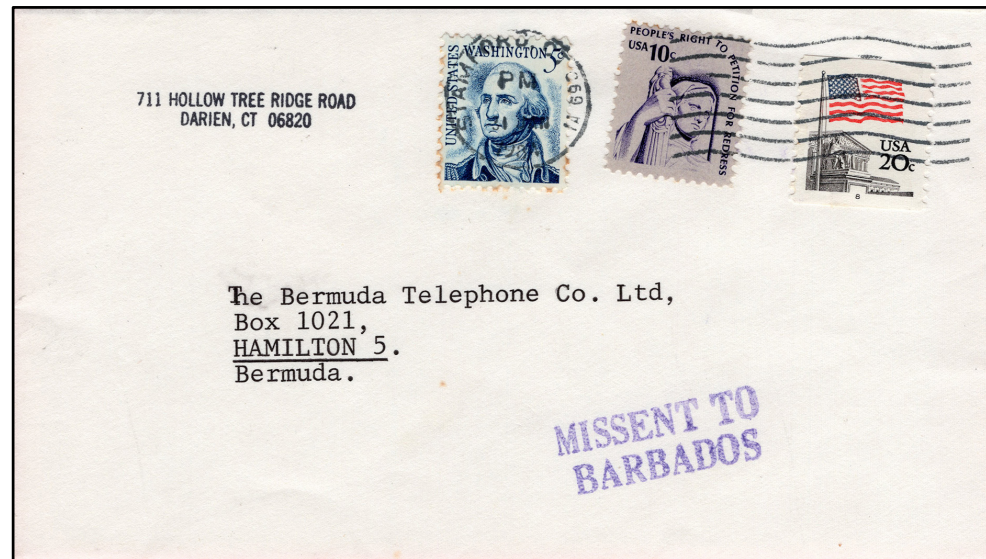


1963, but this time a letter from the U.K. Addressing the letter to both Bermuda and the Bahamas obviously did not help.



1974 The handwriting on this letter from Germany obviously didn't help.

1984 U.S. to Bermuda, missent to Barbados, another favorite destination of missent Bermuda mail.



1984 Another letter addressed to both Bermuda and the Bahamas. Sent registered by the Belize General Post Office it certainly got the attention of the postal clerk in the Bahamas. I am glad I spotted it in the waste basket of Bermuda's Postmaster General!

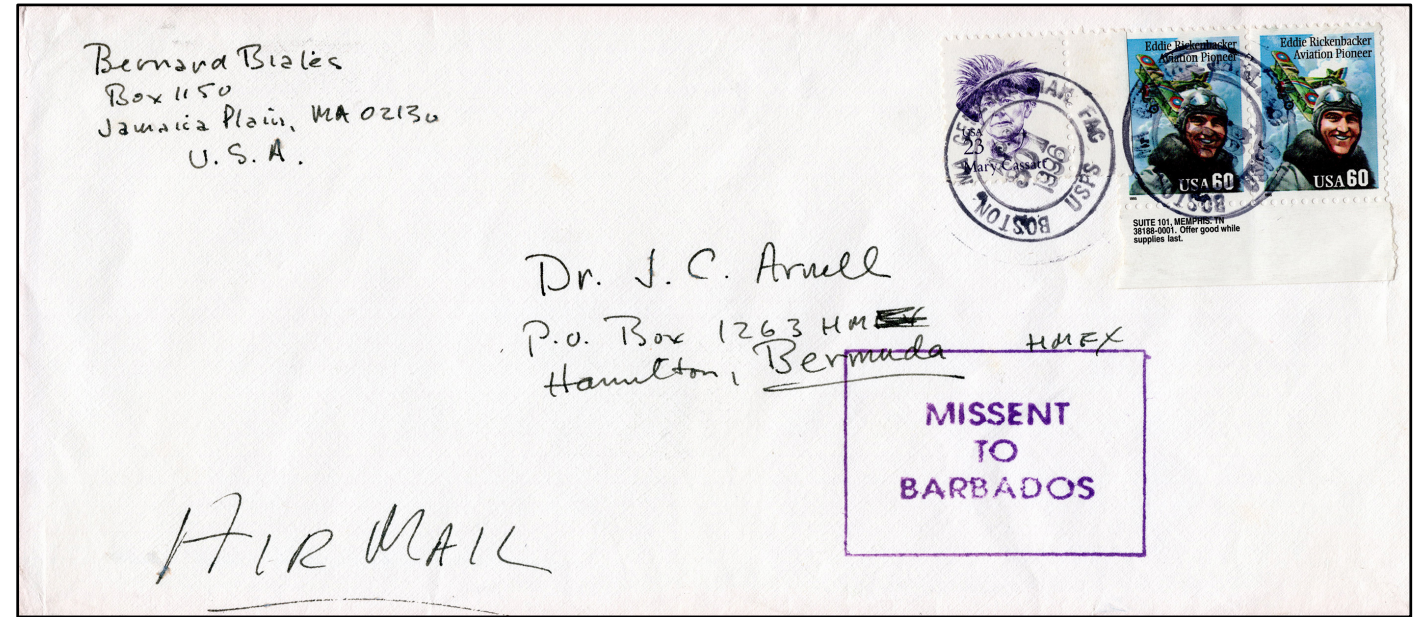


1994 U.K. to Bermuda,  
missent to both  
Barbados and Jamaica.  
I don't think the  
address could have  
been much clearer.

1980 Antigua to  
Bermuda. Mixing  
up Bermuda with  
Barbuda can be  
forgiven.



1996 Another  
example missent  
to Barbados.



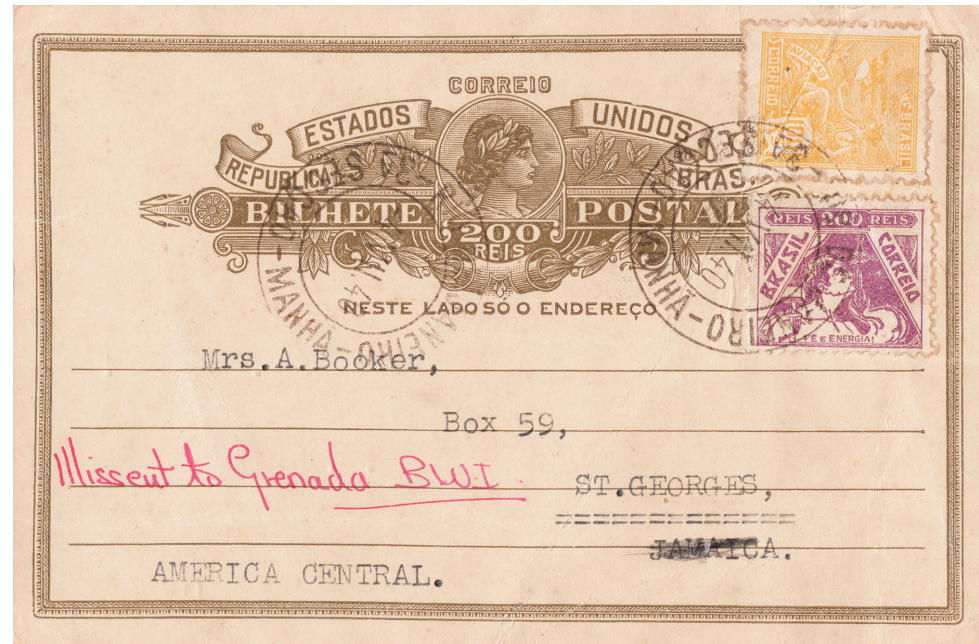


1981 U.K. to Bermuda missent to Belize, a less common destination.

1940 Brazil to Bermuda, but mis-addressed to Jamaica and missent to Grenada. The postcard was mailed on July 4<sup>th</sup>, was backstamped in Grenada on August 27<sup>th</sup> and arrived in Bermuda on September 25<sup>th</sup>, 1940.



1979 U.S. to Bermuda missent to the Cayman Islands, another less common destination. With much of Cayman Island mail channeled through Jamaica, Kingston also cancelled the envelope.



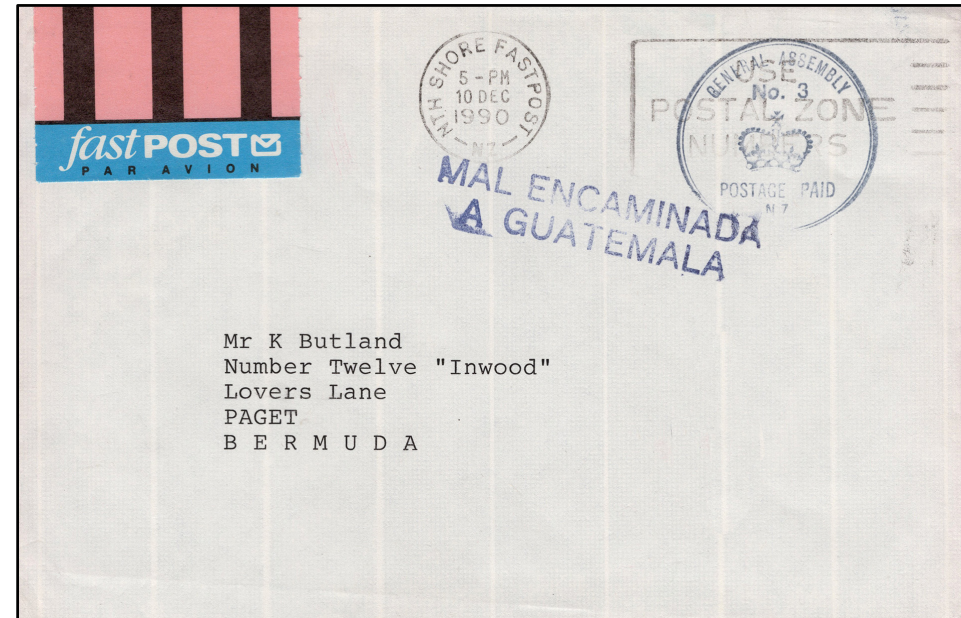


1980 Germany to Bermuda  
missent to Grenada. Although I  
have recorded five different  
**MISSENT TO GRENADA**  
handstamps, the Grenada Post  
Office also marked missent mail  
in manuscript or simply  
backstamped the envelopes.

1990 New Zealand to  
Bermuda missent to  
Guatemala. I don't think  
this letter from New  
Zealand's General  
Assembly could have been  
more clearly addressed.



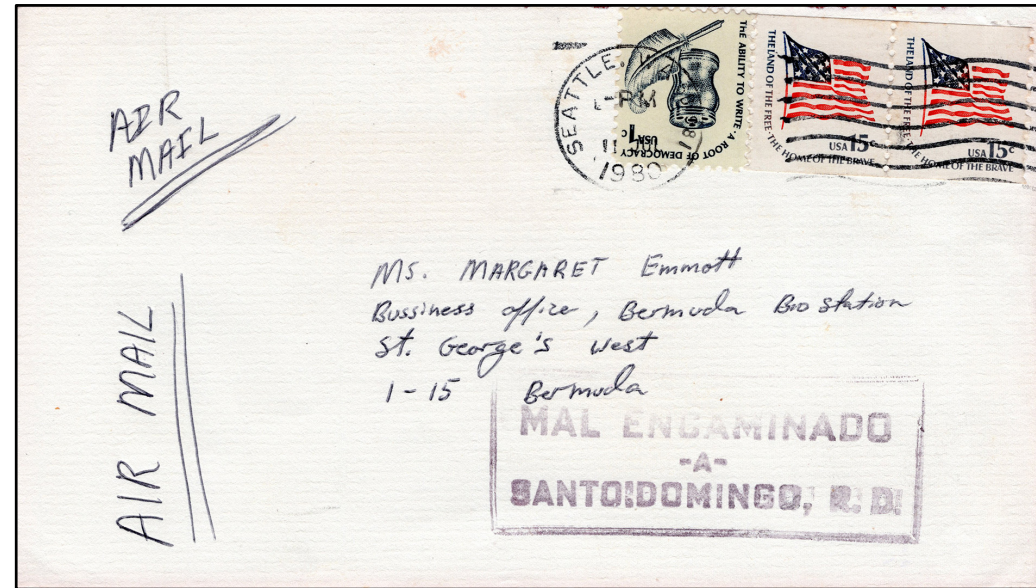
1957  
Canada to  
Bermuda  
missent to  
British  
Guiana.



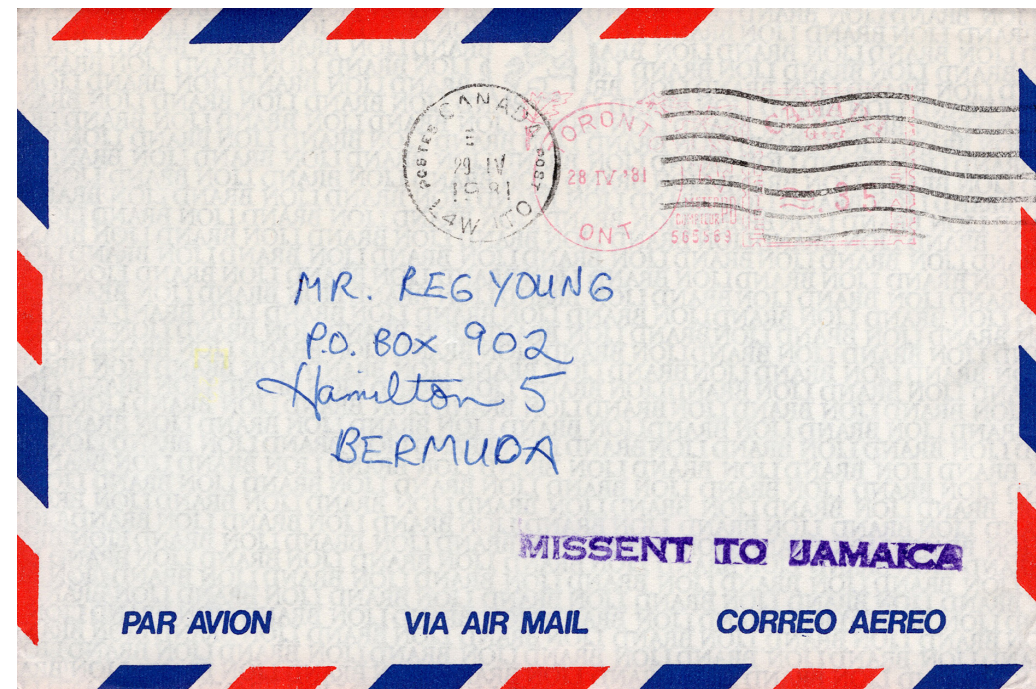


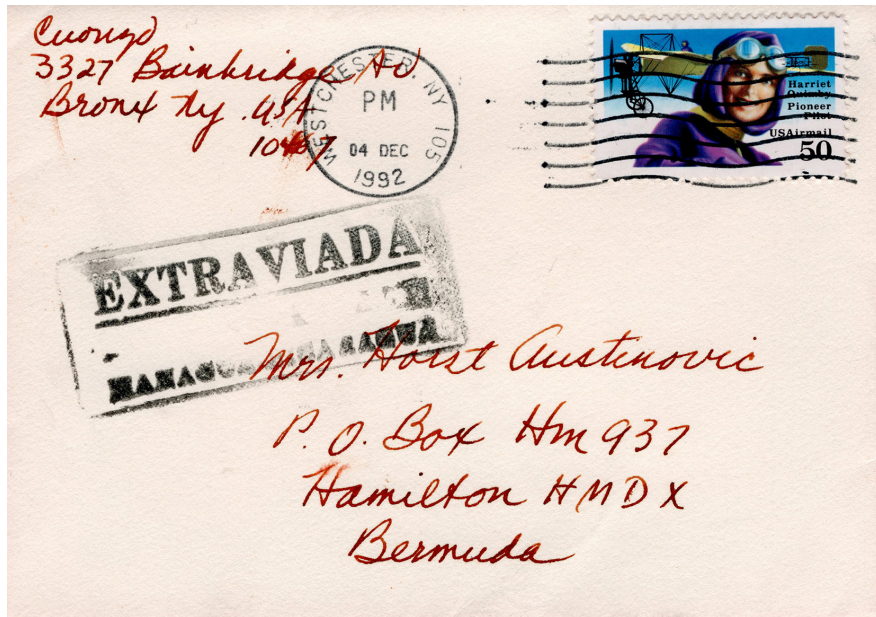
1950 Cayman  
Islands to  
Bermuda  
missent to  
Jamaica.

1981 Canada to Bermuda  
missent to Jamaica. Apart  
from the Bahamas, Jamaica  
is the most common  
destination of missent  
Bermuda mail.



1981 U.S.  
to Bermuda  
missent to  
the  
Dominican  
Republic.





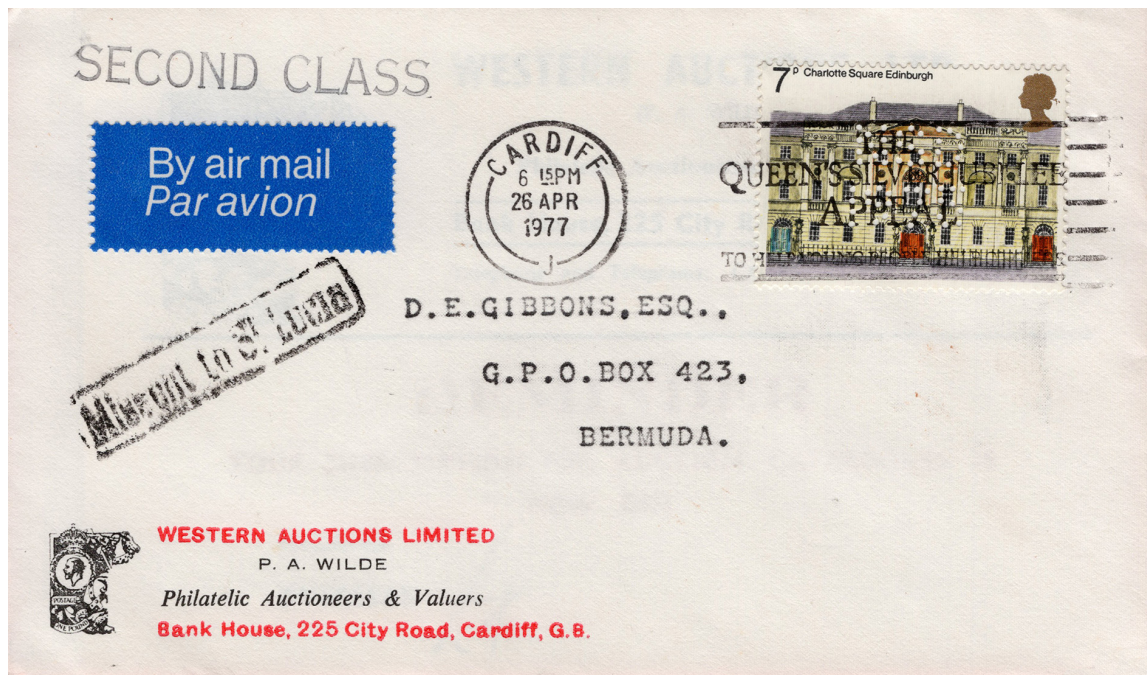
1992 U.S. to Bermuda missent to Nicaragua. Although my name was misspelled, there was no reason to send the letter 3,000 kilometers south to Nicaragua.

1945 Brazil to Bermuda missent to St. Lucia. Sent by registered mail on November 21<sup>st</sup>, the letter was backstamped in St. Lucia on December 24<sup>th</sup> and Trinidad on December 31<sup>st</sup>, 1945.



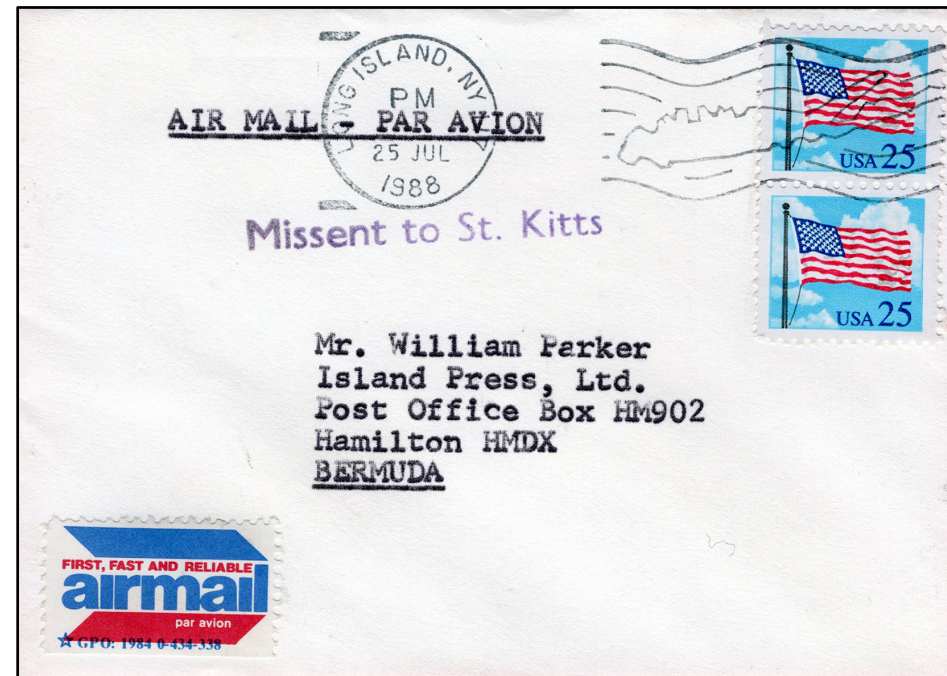
1989 U.S. to Bermuda missent to Paraguay – more than 6,000 kilometers to our south.



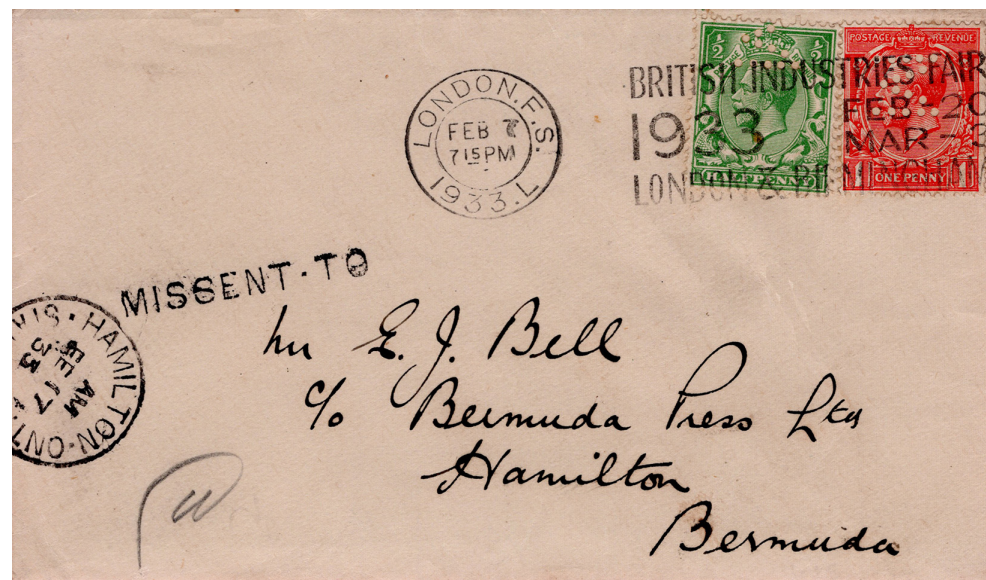


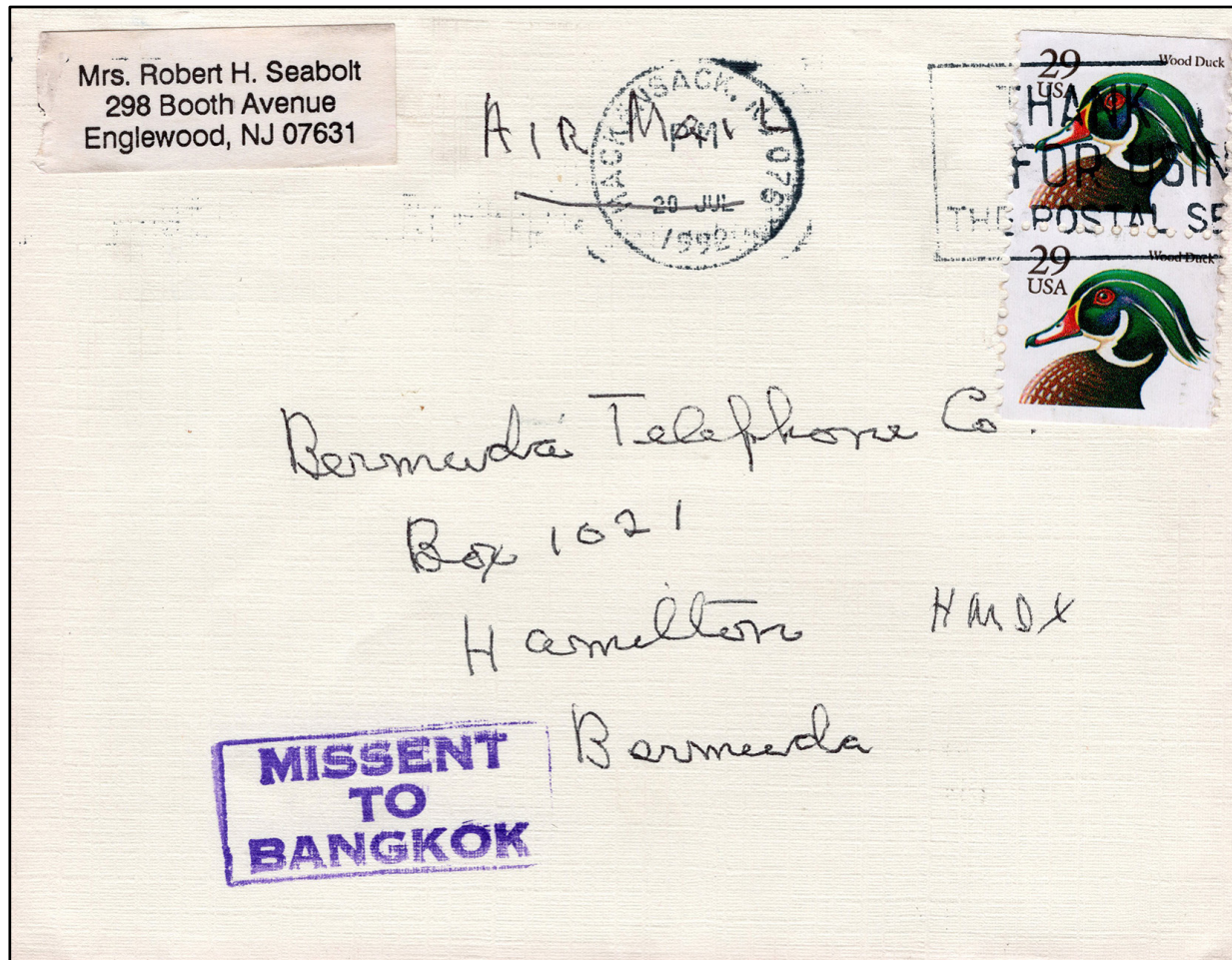
1977 U.K. to Bermuda  
missent to St. Lucia.  
While missent mail  
was marked in  
manuscript in 1945,  
St. Lucia used a  
handstamp in 1977.

1933 Canada to  
Bermuda missent  
to Hamilton,  
Ontario. Mixing  
up Hamilton,  
Bermuda with  
Hamilton, Ontario  
can be forgiven.



1988 U.S. to  
Bermuda  
missent to  
St. Kitts.

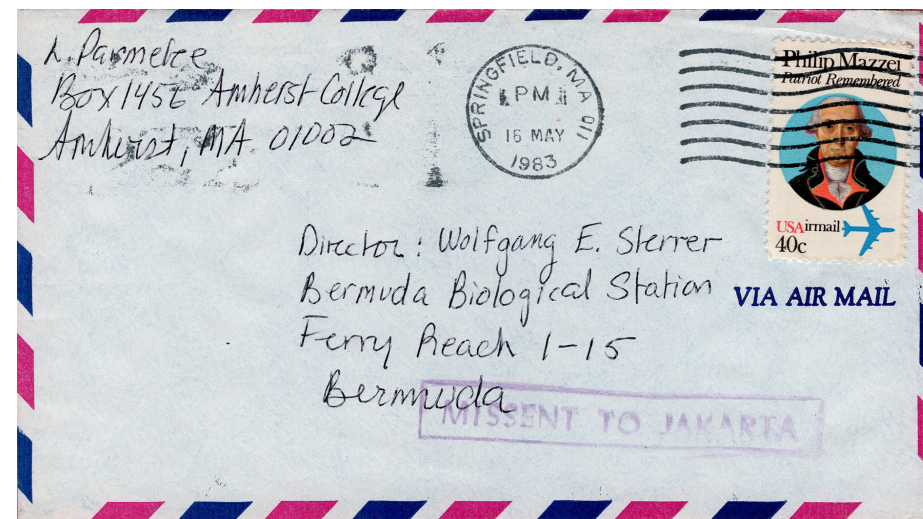




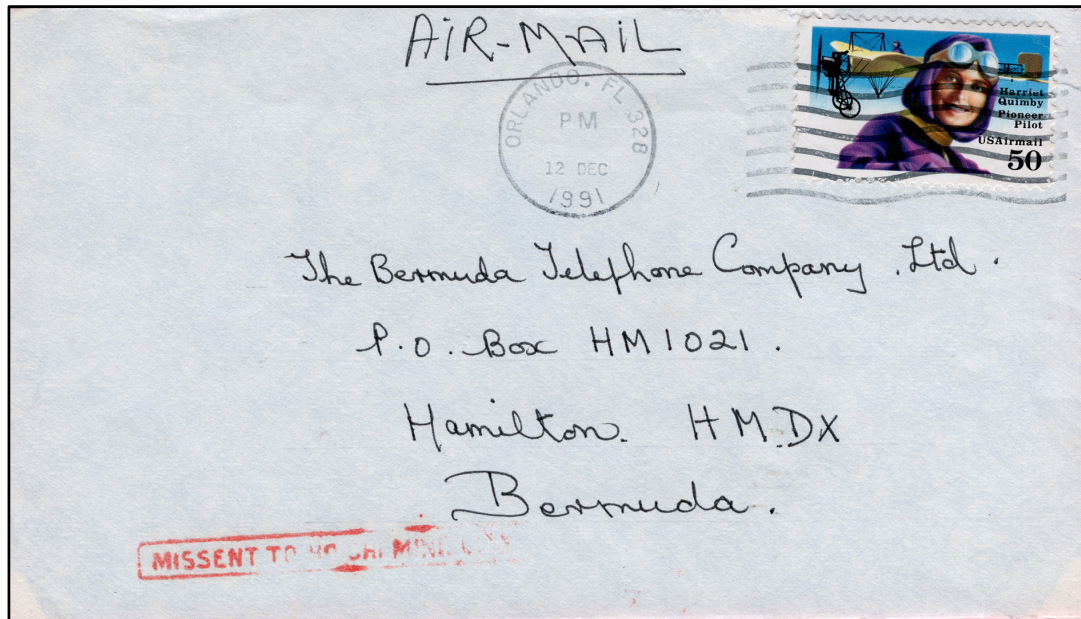
1992 U.S. to Bermuda missent to Bangkok, Thailand ...



1987 Germany to Bermuda missent to Melbourne, Australia, more than 17,000 kilometers away.



... and 1983 U.S. to Bermuda missent to Jakarta, Indonesia.



1991 U.S. to Bermuda missent to  
Ho Chi Minh City, Vietnam.

1938 Australia to Bermuda missent within  
Australia, first Barmundu, then St. George  
and finally the Dead Letter Office in Brisbane  
where someone finally read the address.



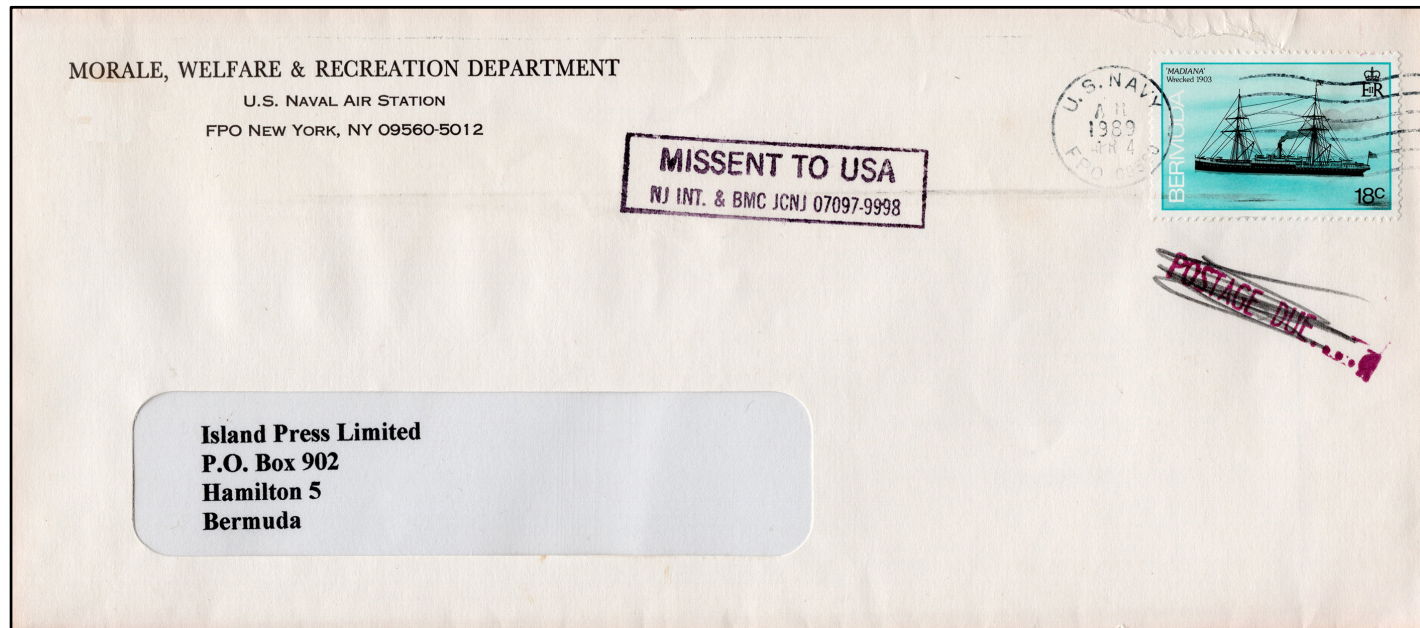
... and finally, a few examples of mail from Bermuda going astray



1979 A Bermuda to Vietnam direct mail letter missent to Korea ...



1991 ... and another direct mail letter to the U.S. missent to Manila in the Philippines.



1989 A local Bermuda letter missent to the U.S. by the U.S. Navy, using a Bermuda stamp, invalid at the Navy Post Office, for postage.

1986 Another local Bermuda letter missent to Hamilton, Ontario. Mailed by a U.S. Navy service member paying a local utility bill, using an upside-down Bermuda stamp invalid at the Navy's post office, with the Navy datestamp also inverted. What else could possibly have gone wrong?

