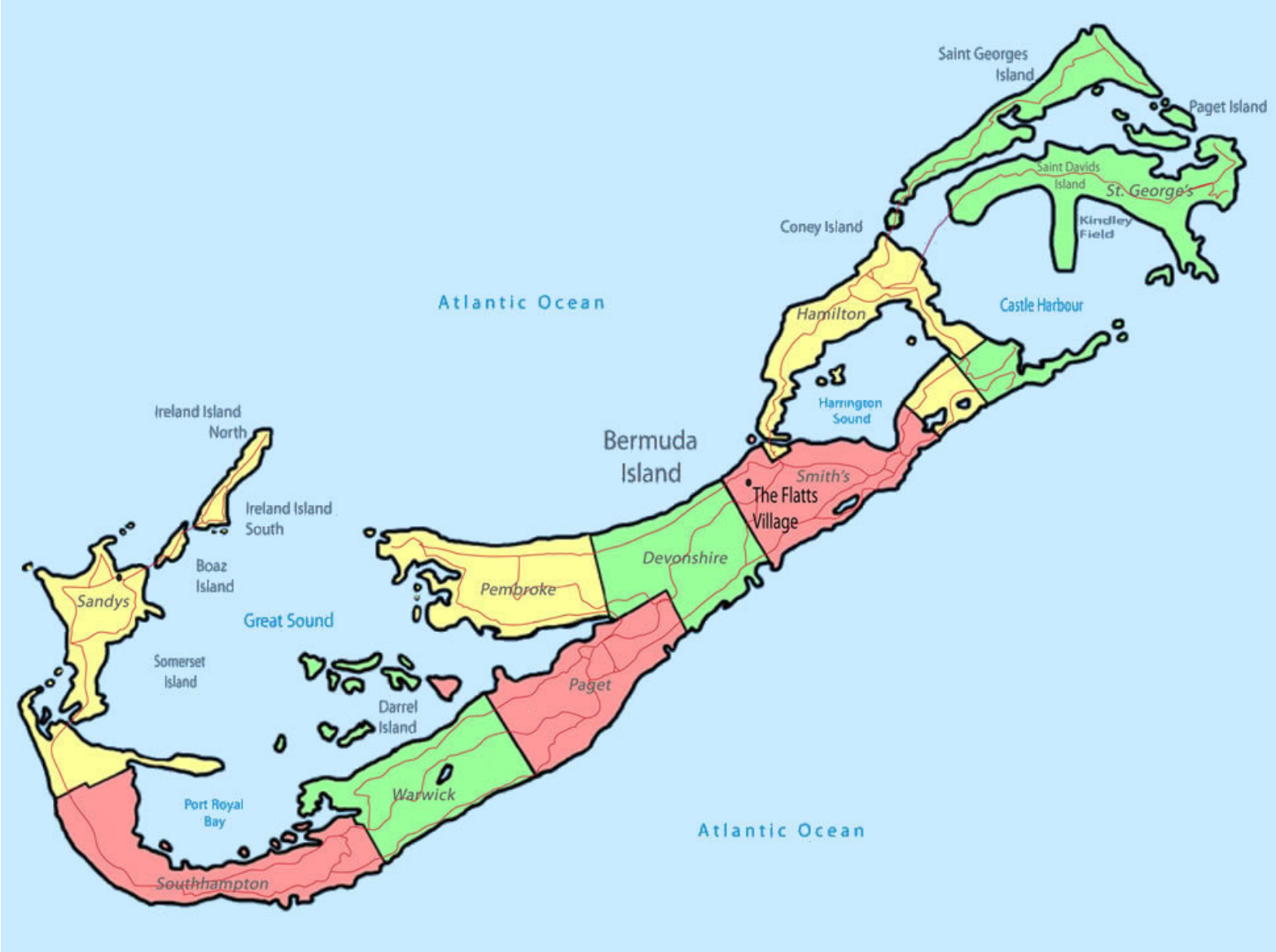




A Primer

# BERMUDA REGISTRATION LABELS





# HISTORY OF REGISTRATION LABELS IN BERMUDA

- The earliest known label was issued in 1909 replacing “R” handstamps which had been in use for the previous 50 years.
- Labels were issued from 34 different Post Offices and Government Offices.
- These labels were in use from 1909 to 2002.

Earliest Known Date: 1 Feb 1909





# TYPES OF REGISTRATION LABELS

- Labels were issued in 3 different formats: Sheet, Coil and Imperforate.
- Sheet format labels in blue introduced in 1909.
- Gummed and perforated Coil format labels in blue introduced in 1930.
- Imperforate multi-color self-adhesive labels were introduced in the 1980's.



Sheet



Coil



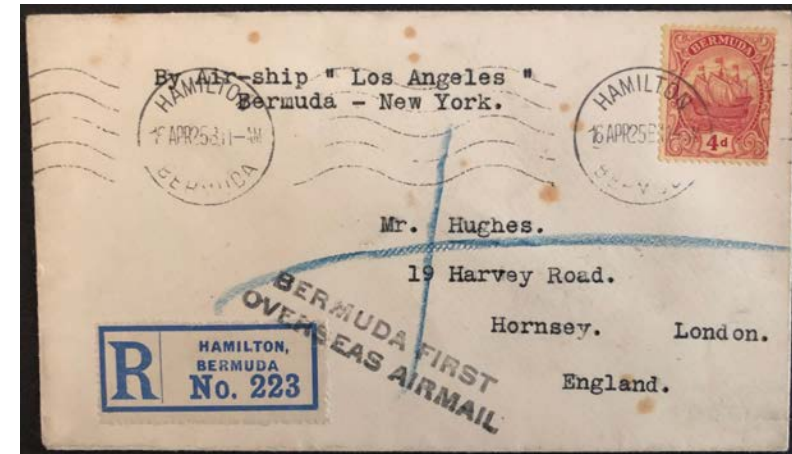
Imperforate

# HAMILTON

- 24 different label types, 16 sheet and 8 coil.
- Earliest known usage: 1 Feb 1909, Latest known usage: Jan 1954



Cancelled: 1 Feb 1927



Cancelled: 16 Apr 1925

Cancelled: 28 Feb 1952





# GPO HAMILTON

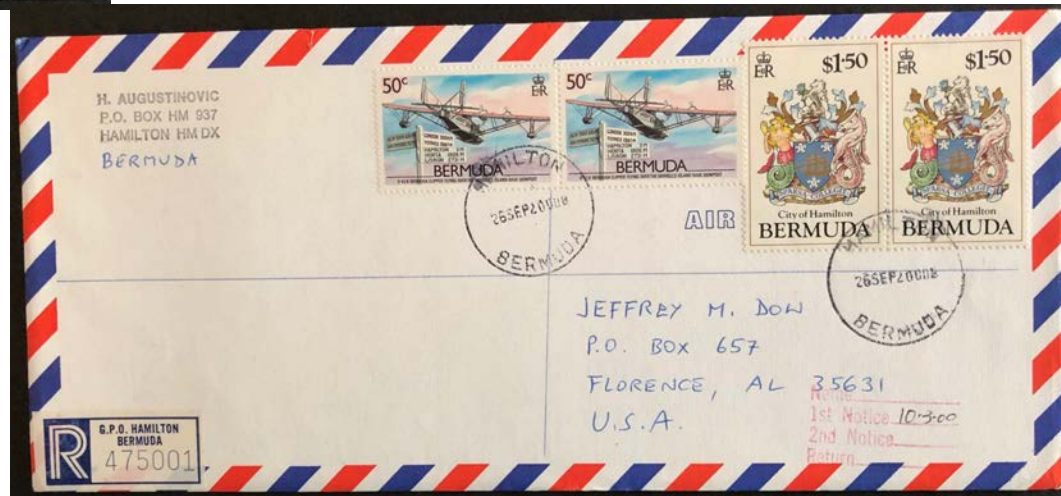
- 24 different label types, 21 coil and 3 imperforate.
- Earliest known usage: 18 Dec 1941, Latest known usage: 3 Sep 2002



Cancelled: 29 Feb 1980



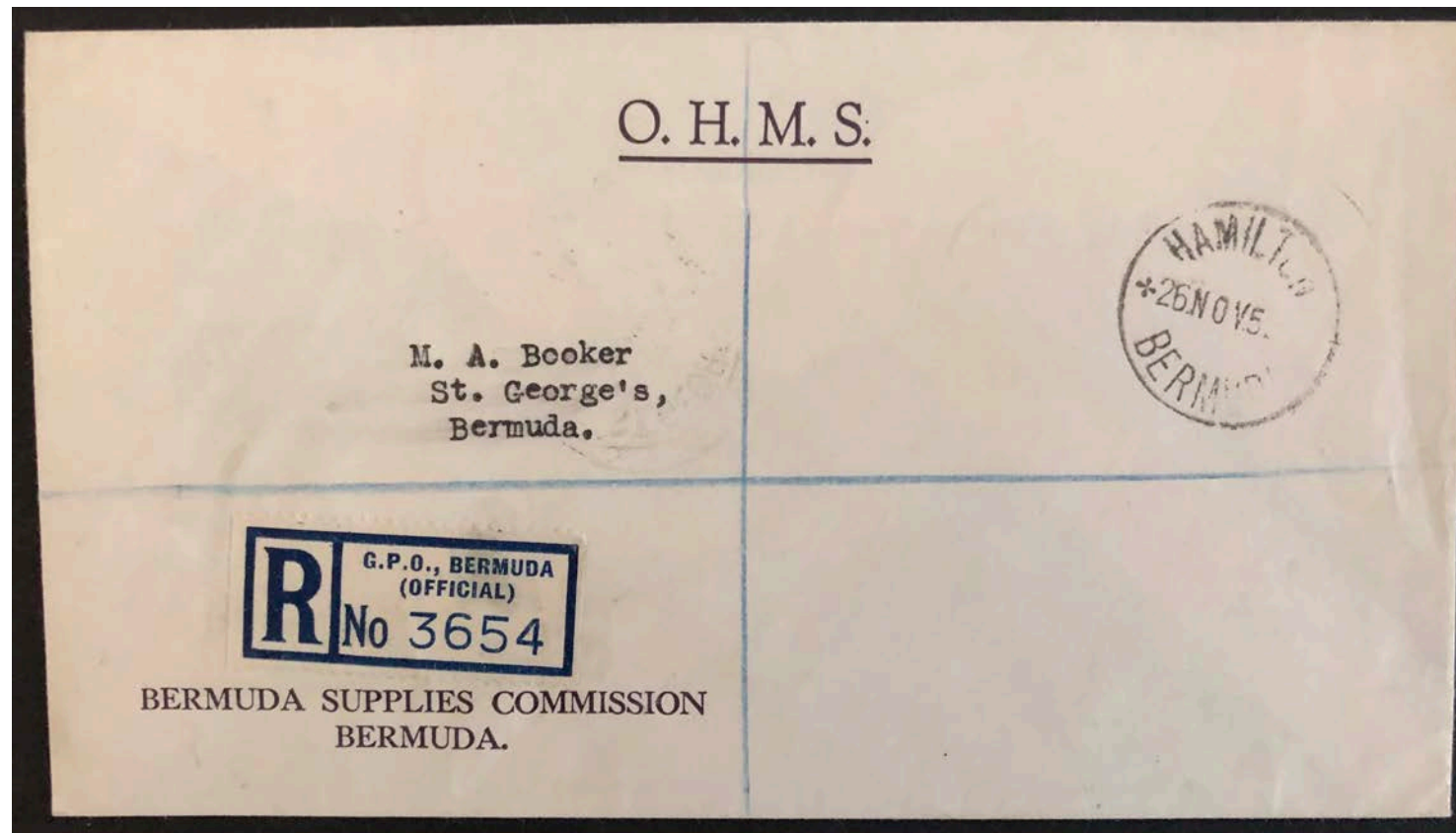
Cancelled: 26 Sep 2000



# GPO BERMUDA OFFICIAL

- 6 different label types, 6 coil.
- Earliest known usage: 1947, Latest known usage: 1975

Cancelled: 26 Nov 1953



# BPO OFFICIAL BERMUDA

- 7 different label types, 4 coil and 3 imperforate.
- Earliest known usage: 27 Jun 1979, Latest known usage: 6 May 2002



Cancelled: 30 May 1994

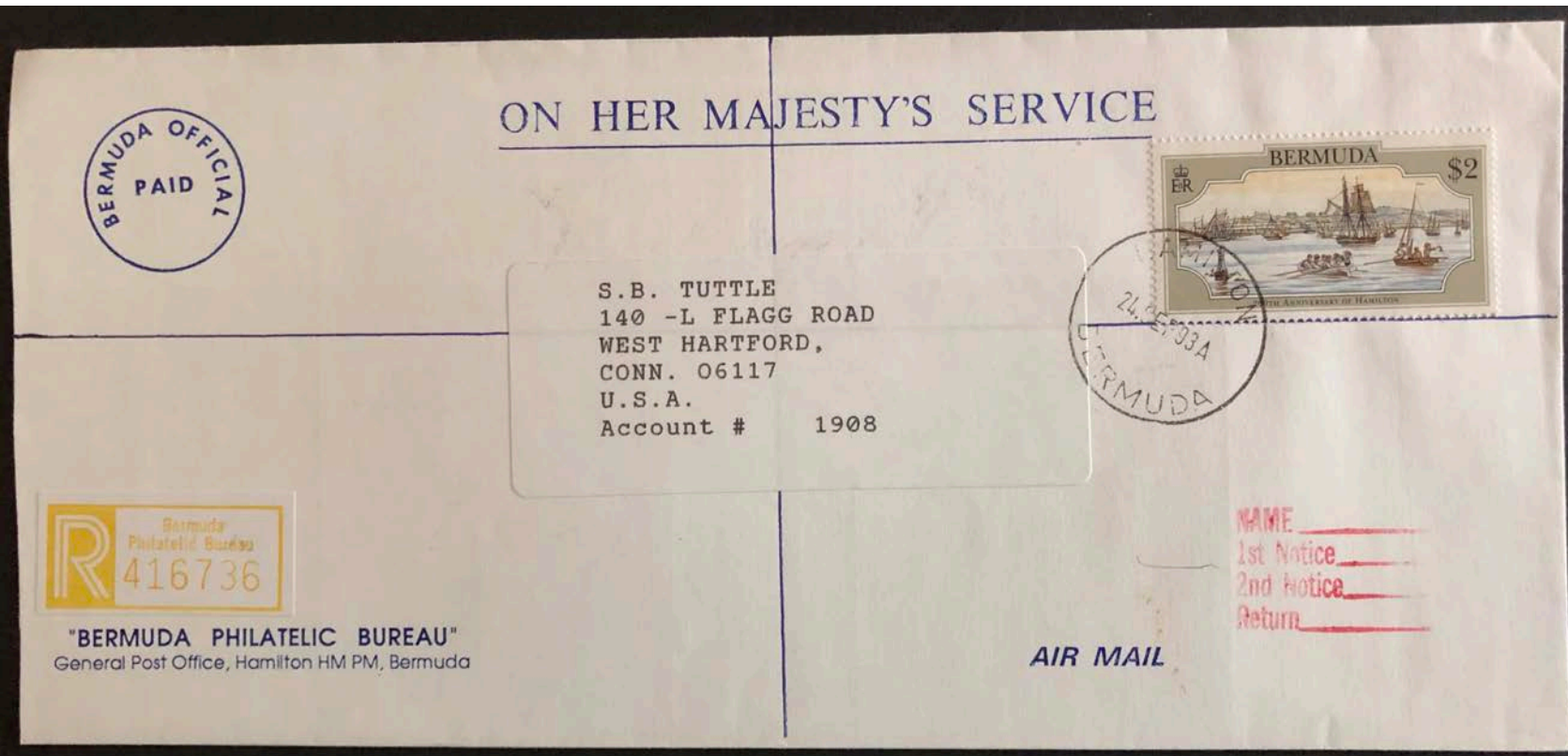
Cancelled: 21 Jun 1985





# BERMUDA PHILATELIC BUREAU

- 2 different label types, 2 imperforate.
- Earliest known usage: 23 Sep 1993, Latest known usage: 30 Jul 1997



Cancelled: 24 Sep 1993

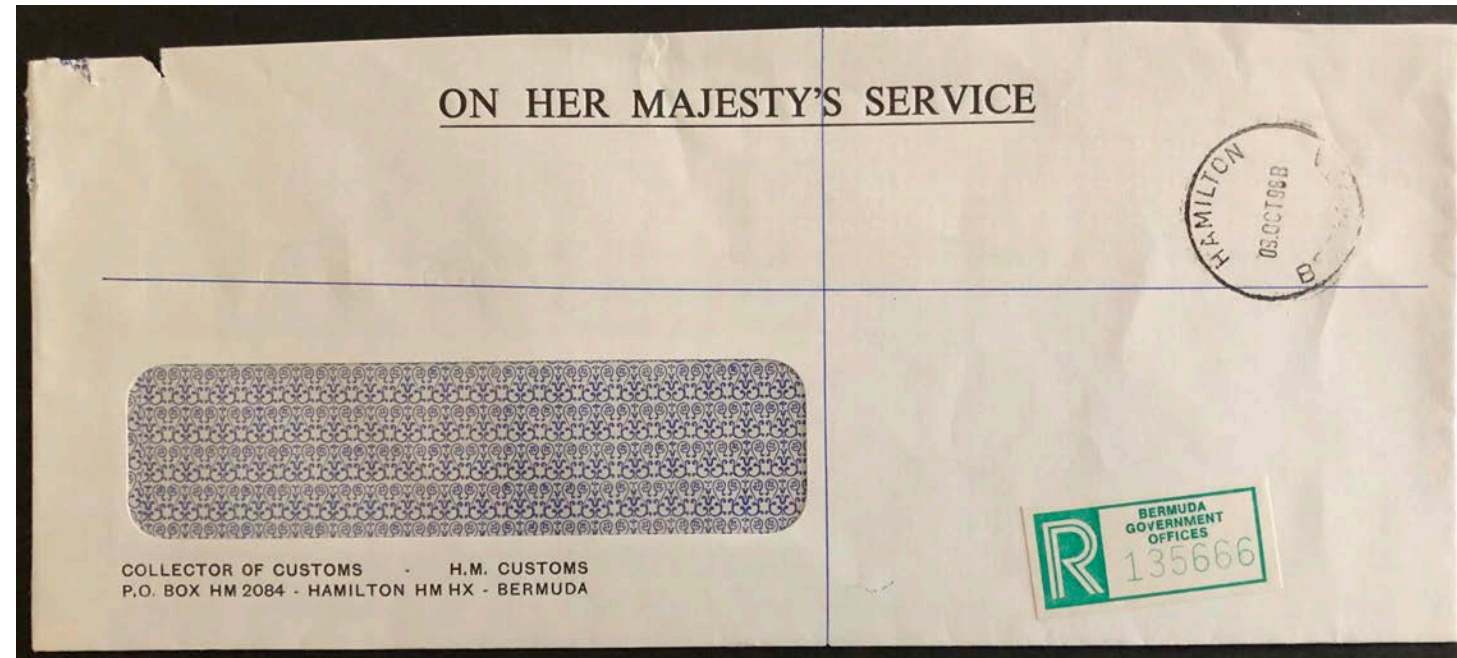
# BERMUDA GOVERNMENT OFFICES

- 4 different label types, 1 coil and 3 imperforate.
- Earliest known usage: 14 May 1982, Latest known usage: 1988



Cancelled: 14 Jul 1982

Cancelled: 9 Oct 1996



# PBO BERMUDA

- 3 different label types, 3 imperforate
- Earliest known usage: 3 Feb 1987, Latest known usage: 19 Mar 1997
- “Private Business Organizations”

Cancelled: 22 Apr 1986





# AIR MAIL - GPO

- 7 different label types, 7 coil.
- Earliest known usage: 12 Aug 1933, Latest known usage: 2 Apr 1943



Cancelled: 31 Feb 1943

Cancelled: 2 Apr 1943

Cancelled: 27 Jan 1942





# PARCEL POST HAMILTON BERMUDA

- 3 different label types, 2 coil and 1 printed on Customs Declaration
- Earliest known usage: 1947, Latest known usage: 1975



Cancelled: 9 Dec 1950

Cancelled: 2 Feb 1958

A photograph of a brown paper parcel post envelope with a Customs Declaration form attached. The form is filled out with handwritten information. The addressee is Miss Elizabeth Whitehouse, 615 W. Forest Street, Ypsilanti, Michigan, U.S.A. The parcel is insured for \$2.40. The contents are 2 CUPS + SAUCERS. The sender is H. A. & E. SMITH, LTD., HAMILTON, BERMUDA. The form is cancelled with a circular postmark dated 22 FEB 58.

ADDRESSEE Miss Elizabeth Whitehouse  
615 W. Forest Street  
Ypsilanti  
07246-18 L Michigan U.S.A.

NOTE—An undeliverable parcel is normally returned to the sender, who is liable for return postage and other charges incurred. If, however, he desires the parcel, if undeliverable, to be disposed of otherwise, he should complete and sign the instructions below.

INSTRUCTIONS GIVEN BY THE SENDER.  
If not deliverable as addressed, the parcel should be returned to sender.  
RETURN POSTAGE GUARANTEED  
Sender's Signature:—  
P. O. No. 58

**Customs Declaration**  
PARCELS POST BETWEEN BERMUDA & U. S. A. **R** Parcel Post Hamilton, Bermuda No 86

CONTENTS	VALUE	DATE STAMP
2 CUPS + SAUCERS	\$2.40	22 FEB 58 BERMUDA

Name and address of Sender  
H. A. & E. SMITH, LTD.  
HAMILTON, BERMUDA

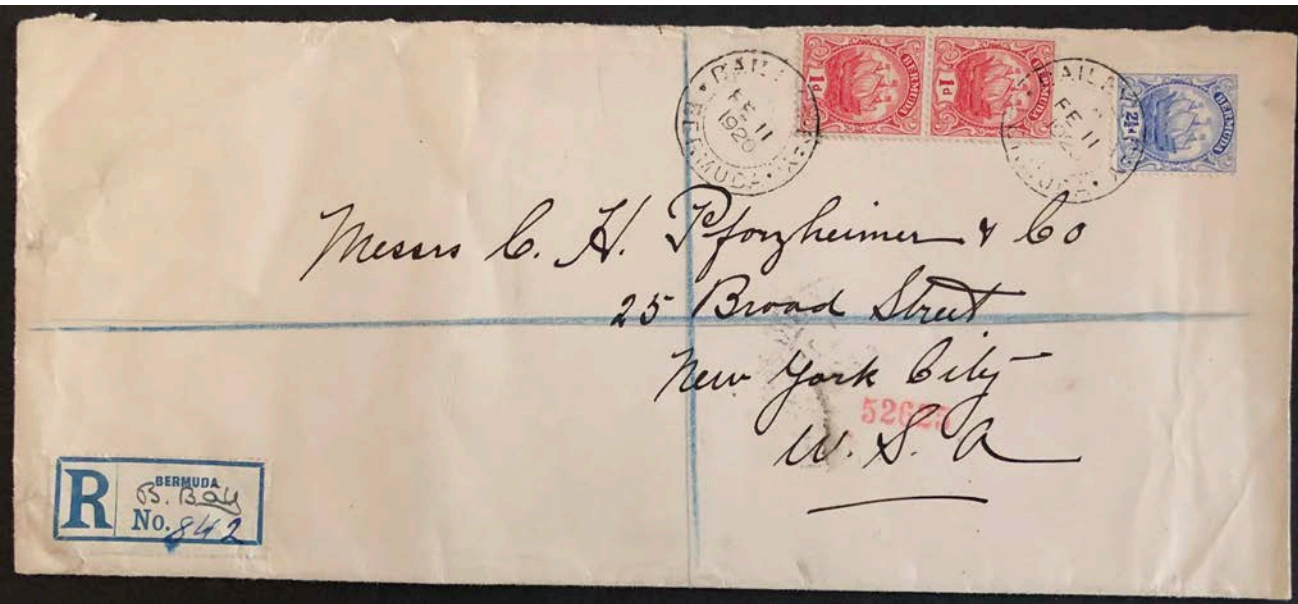
Parcel Bill No. 153  
No. of Rates  
Entry No. 153  
Date of Mailing

PAID  
Detroit, Michigan  
H. A. & E. Smith



# BAILEY'S BAY

- 14 different label types, 3 sheet(known with manuscript added), 9 coil and 2 imperforate.
- Earliest known usage: 11 Feb 1920, Latest known usage: 25 Oct 1993



Cancelled: 11 Feb 1920  
(manuscript "B Bay" added)



Cancelled: 13 May 1933





# CRAWL

- 12 different label types, 3 sheet, 8 coil and 1 imperforate.
- Earliest known usage: 2 Mar 1928, Latest known usage: 1992



Cancelled: 23 Mar 1931



Cancelled: 2 Mar 1928

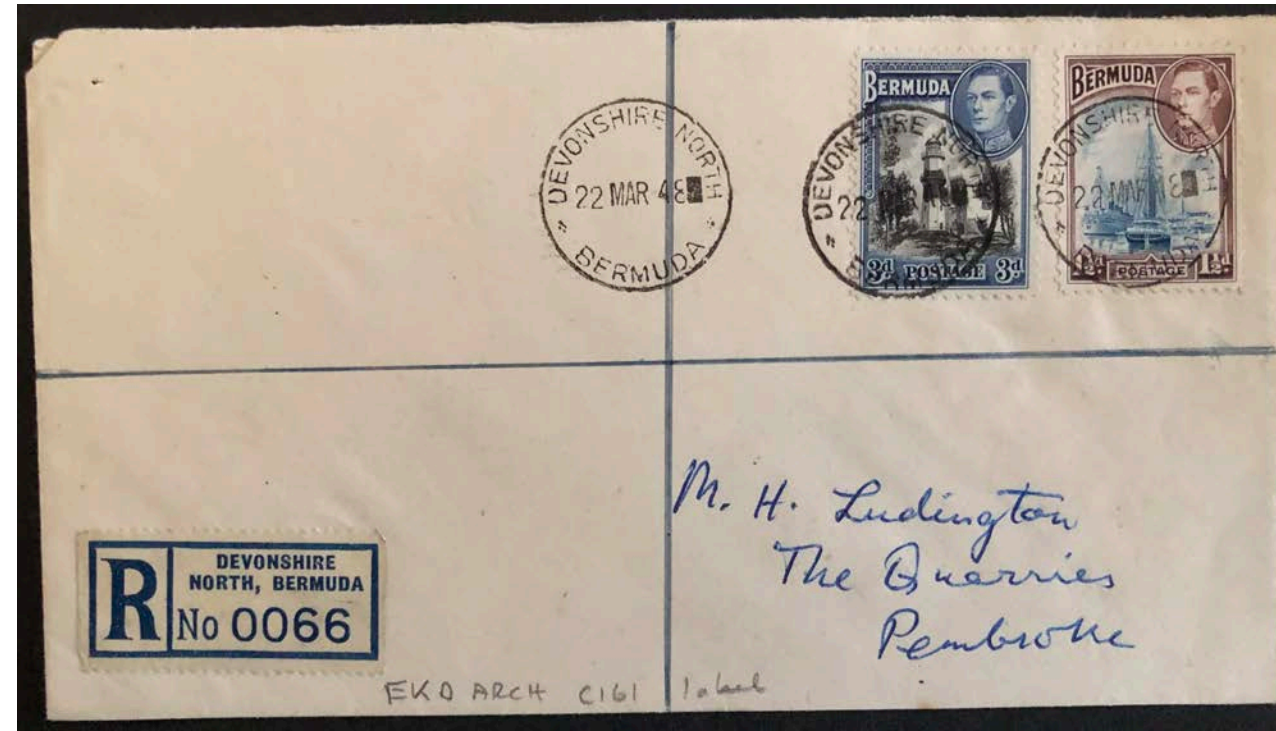
# DEVONSHIRE NORTH

- 4 different label types, 2 sheet and 2 coil.
- Earliest known usage: 1930, Latest known usage: 22 Mar 1948



Cancelled: 15 Feb 1944

Cancelled: 22 Mar 1948





# DEVONSHIRE SOUTH

- 9 different label types, 2 sheet and 7 coil.
- Earliest known usage: 14 May 1926, Latest known usage: 25 Jul 1959



Cancelled: 14 May 1926

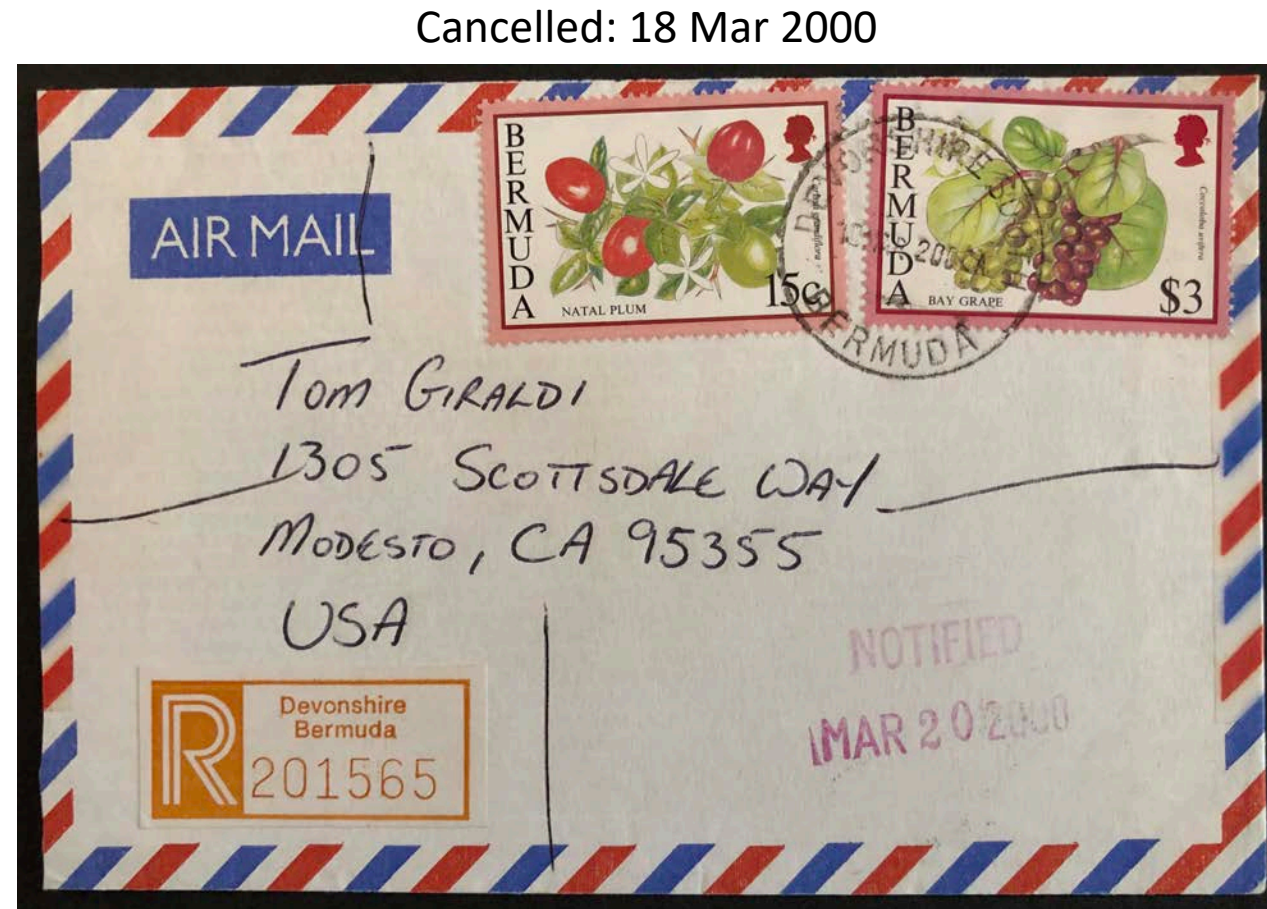


# DEVONSHIRE

- 5 different label types, 1 sheet, 2 coil and 2 imperforate.
- Earliest known usage: 16 Jun 1914, Latest known usage: 18 Mar 2000



Cancelled: 16 Jun 1914





# FLATTS

- 17 different label types, 7 sheet(known with manuscript added), 9 coil an 1 imperforate
- Earliest known usage: 5 Aug 1913, Latest known usage: 1991



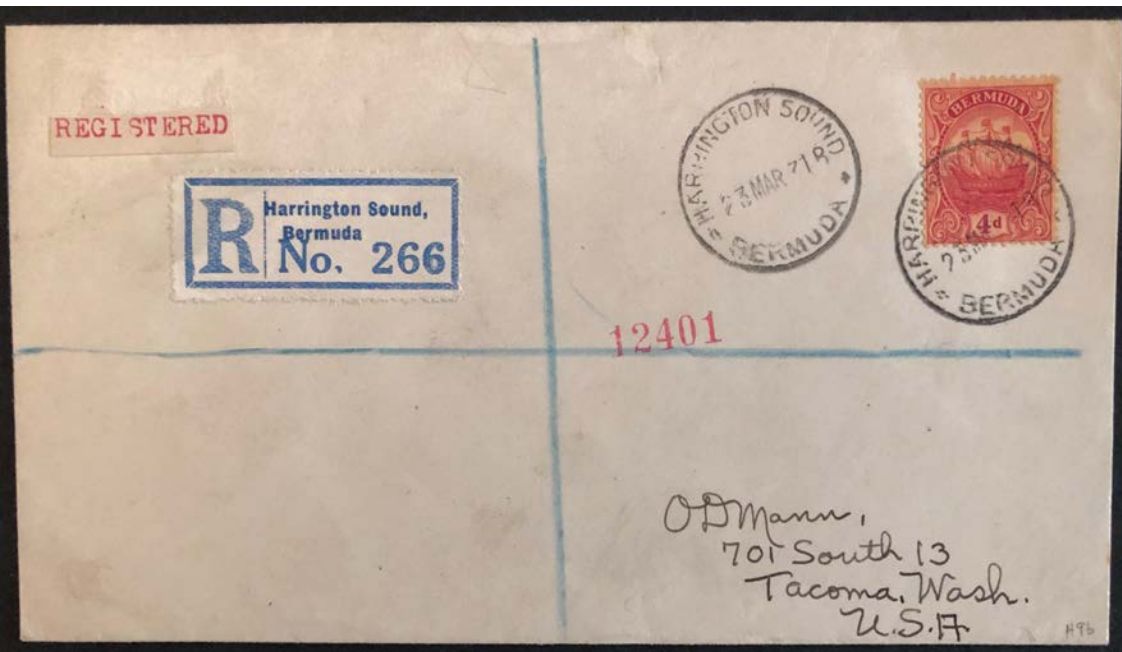
Cancelled: 5 Aug 1913

Cancelled: 6 Nov 1946



# HARRINGTON SOUND

- 16 different label types, 9 sheet(known with manuscript added), 6 coil and 1 imperforate.
- Earliest known usage: 1921, Latest known usage: 1991



Cancelled: 23 Mar 1931

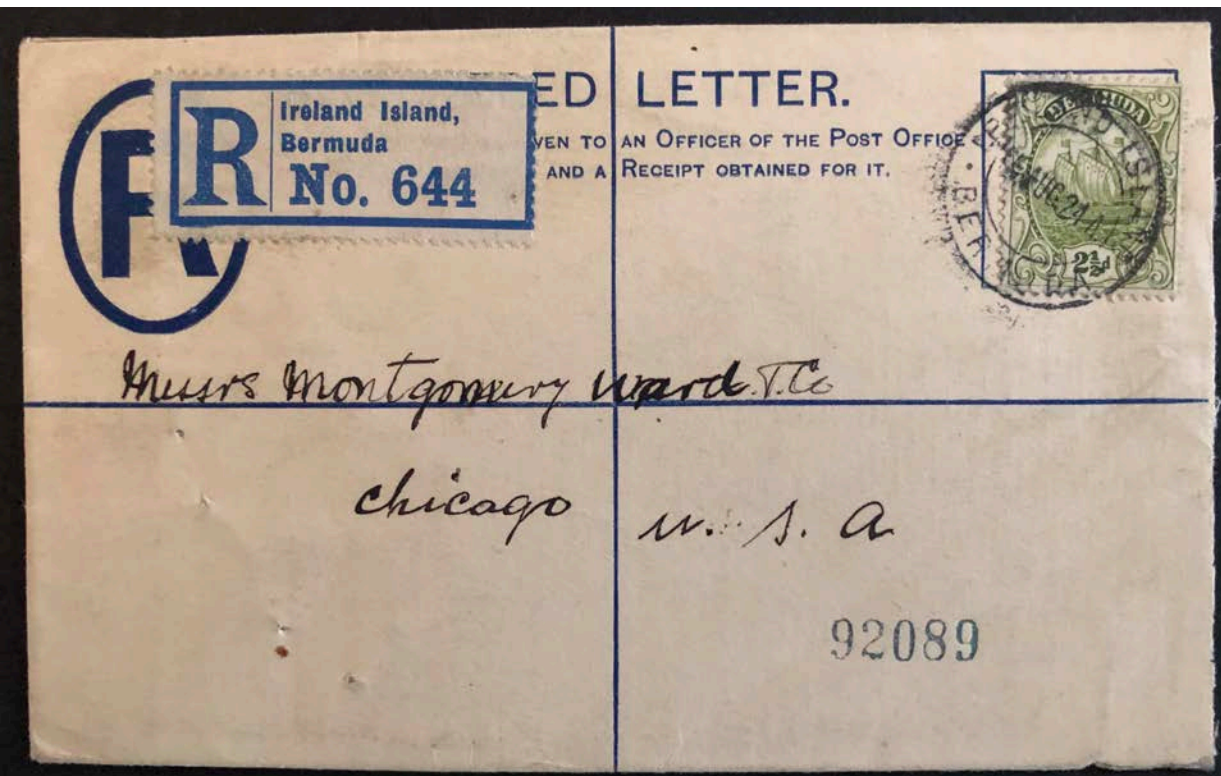
Cancelled: 18 Mar 1981





# IRELAND ISLAND

- 11 different label types, 7 sheet and 4 coil.
- Earliest known usage: 15 Aug 1924, Latest known usage: 30 Apr 1951



Cancelled: 15 Aug 1924

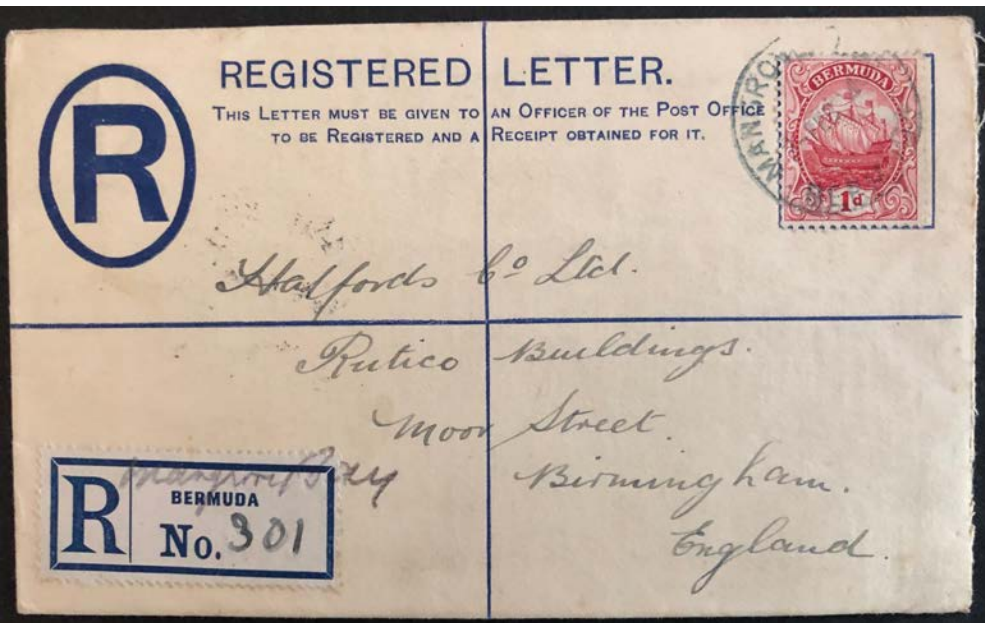
Cancelled: 30 Apr 1951





# MANGROVE BAY

- 16 different label types, 4 sheet(known with manuscript added), 11 coil and 1 imperforate.
- Earliest known usage: 14 Sep 1923, Latest known usage: 1991



Cancelled: 25 Feb 1924  
(manuscript "Mangrove Bay" added)





# PAGET

- 11 different label types, 9 coil and 2 imperforate.
- Earliest known usage: Oct 1934, Latest known usage: 6 May 2002



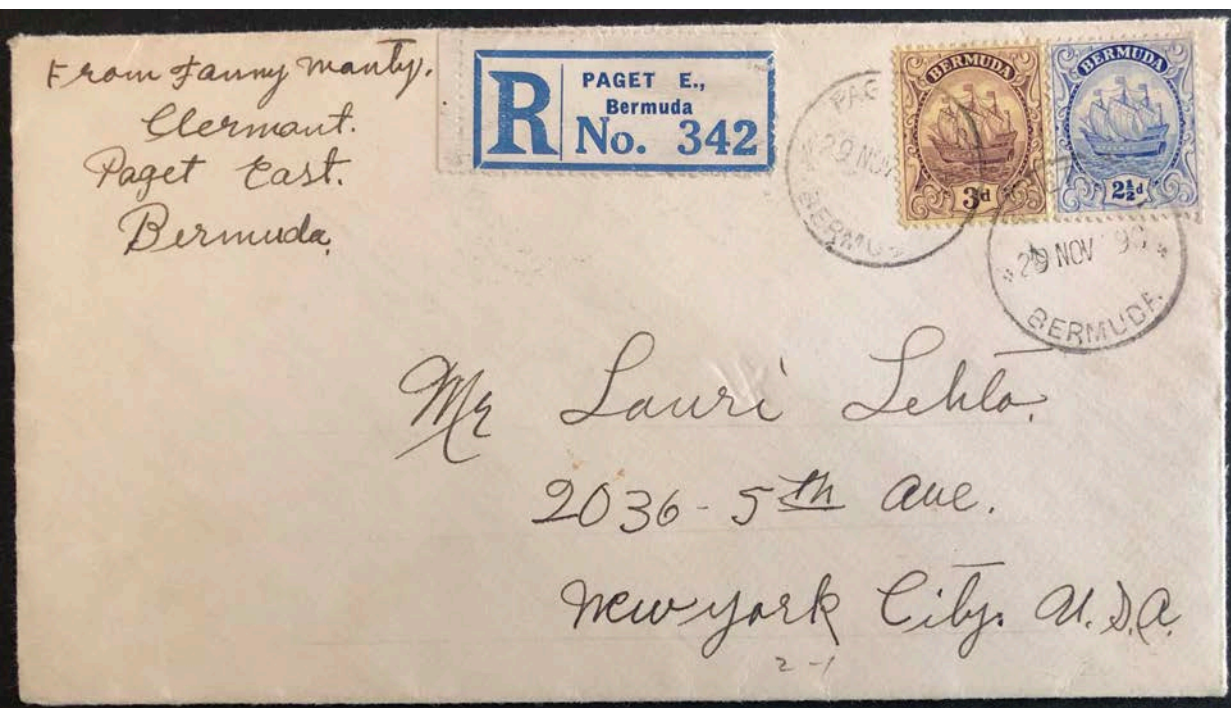
Cancelled: 9 Mar 1981

Cancelled: 6 May 2002



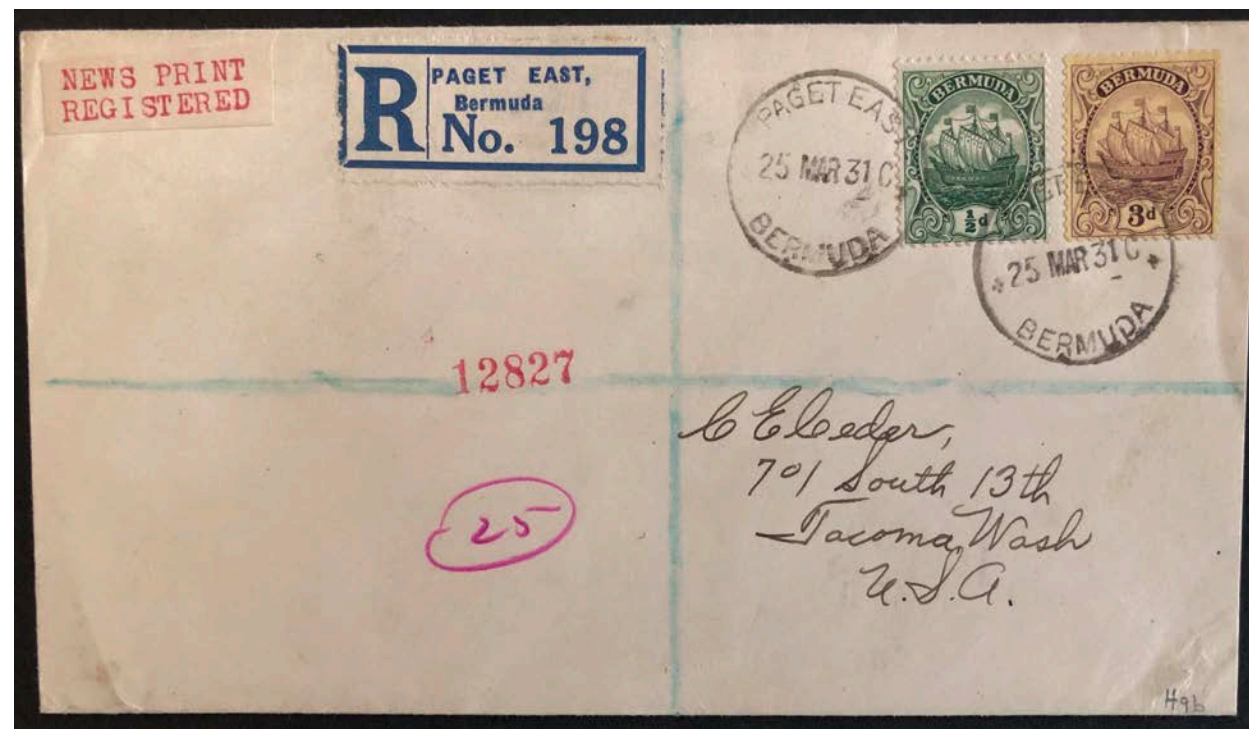
# PAGET EAST

- 4 different label types, 4 sheet.
- Earliest known usage: 1920, Latest known usage: 25 Mar 1931



Cancelled: 29 Nov 1929

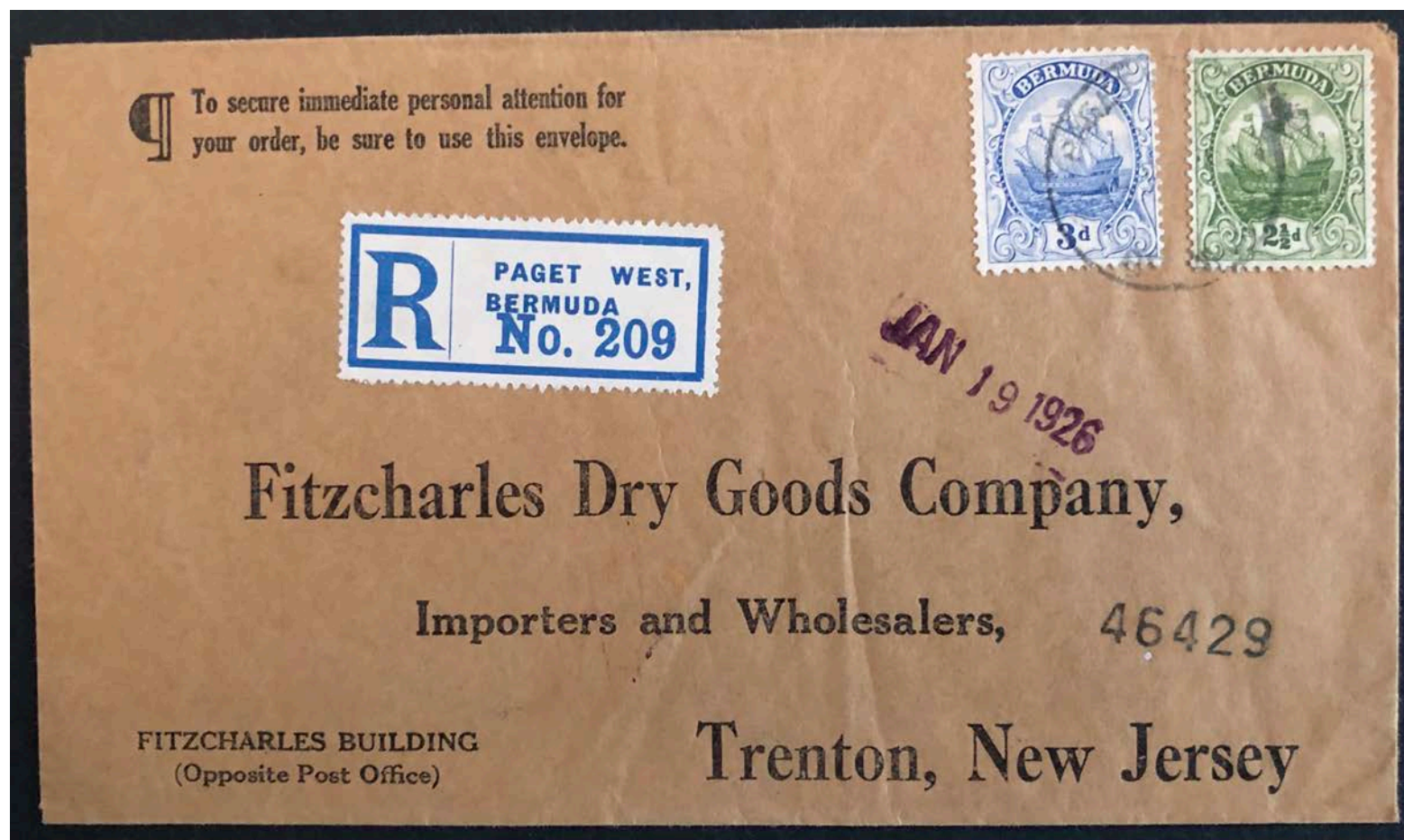
Cancelled: 25 Mar 1931





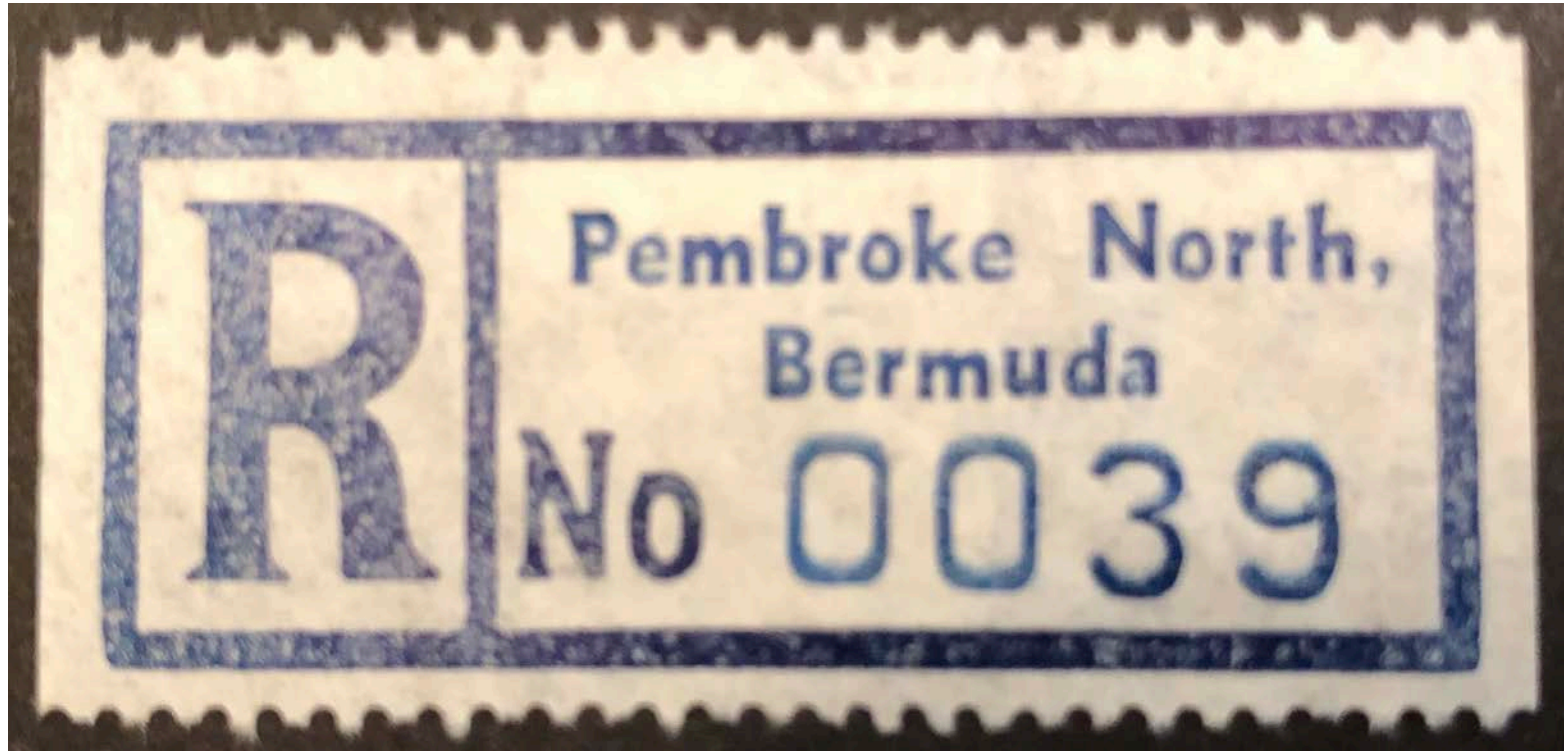
# PAGET WEST

- 3 different label types, 3 sheet.
- Earliest known usage: 15 Jan 1926, Latest known usage: 21 Mar 1931



# PEMBROKE NORTH

- 1 different label types, 1 coil.
- Earliest known usage: 1987, Latest known usage: 1992





# PEROT

- 5 different label types, 3 coil and 2 imperforate.
- Earliest known usage: 4 Mar 1981, Latest known usage: 6 Sep 1990



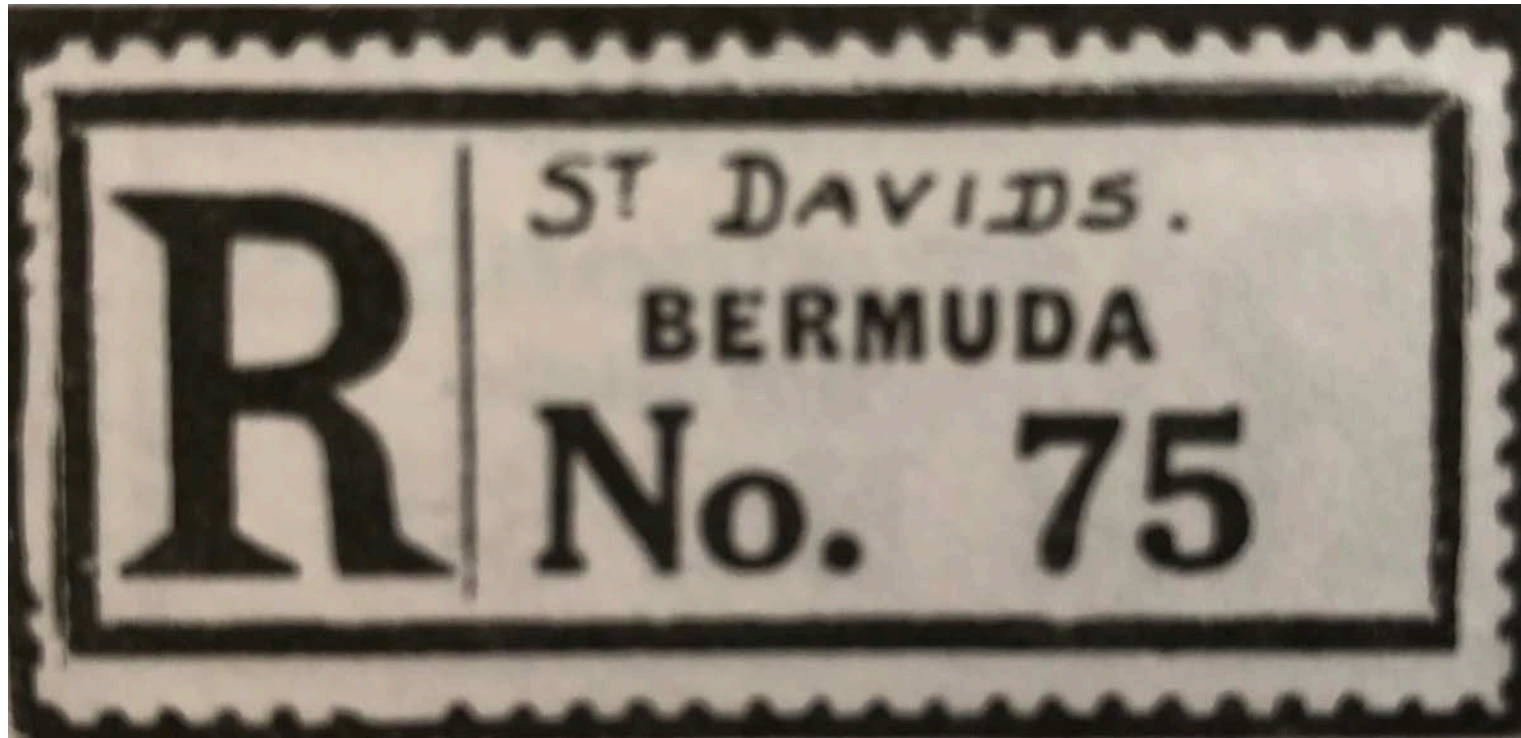
Cancelled: 5 Mar 1982

Cancelled: 4 Mar 1981



# ST DAVID'S

- 1 different label type, 1 sheet.
- Earliest known usage: 3 Jan 1930, Latest known usage: 3 Jan 1930





# ST DAVID'S ISLAND

- 3 different label types, 2 coil and 1 imperforate.
- Earliest known usage: 5 Jun 1981, Latest known usage: 1991

Cancelled: 5 Jun 1991



# ST. GEORGE'S

- 22 different label types, 8 sheet (known with manuscript added in black and red), 12 coil and 2 imperforate.
- Earliest known usage: 2 Jun 1920, Latest known usage: 19 Dec 1994



Cancelled: 30 Nov 1948



Cancelled: 2 Jun 1920  
(manuscript "St Georges"  
added in red)



# ST GEORGE'S WEST

- 3 different label types, 2 sheet(known with manuscript added in red) and 1 coil.
- Earliest known usage: 21 Mar 1912, Latest known usage: 27 Jan 1936



Cancelled: 23 Nov 1928(manuscript  
"St Georges W" added in red)

Cancelled: 10 Dec 1935





# SOMERSET BRIDGE

- 8 different label types, 1 sheet, 6 coil and 1 imperforate.
- Earliest known usage: 21 May 1931, Latest known usage: 6 May 2002

Cancelled: 26 Nov 1953



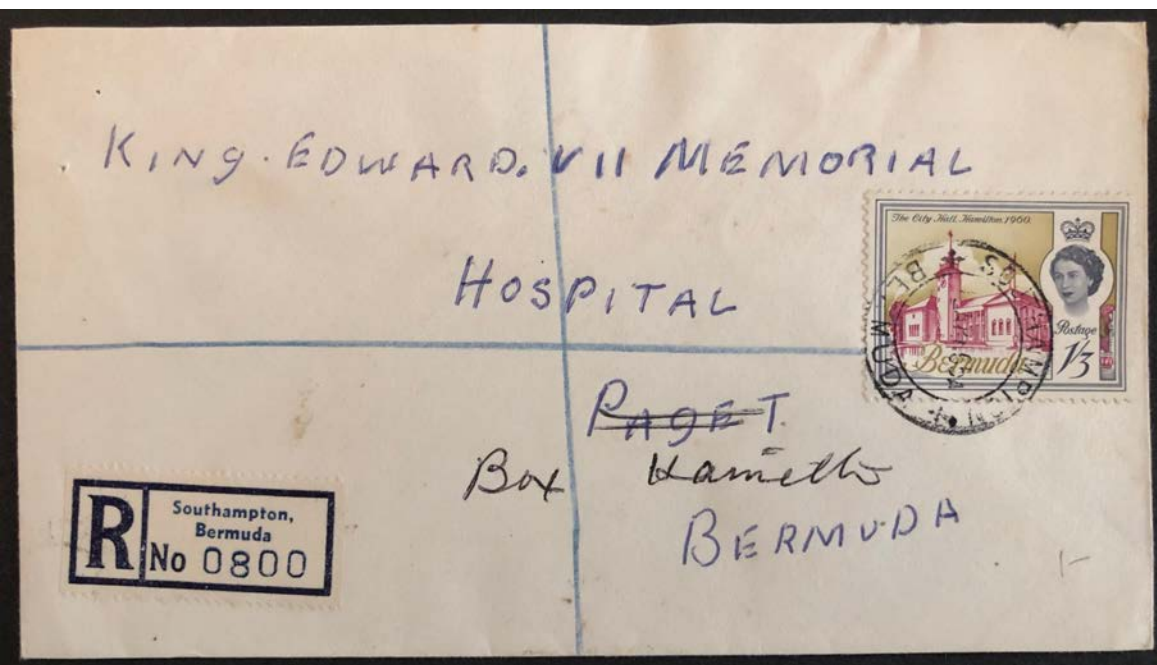
Cancelled: 24 Mar 1981





# SOUTHAMPTON

- 12 different label types, 10 coil and 2 imperforate.
- Earliest known usage: 11 Apr 1949, Latest known usage: 1991



Cancelled: 12 Apr 1965





# SOUTHAMPTON EAST

- 5 different label types, 3 sheet and 2 coil.
- Earliest known usage: 23 Feb 1929, Latest known usage: 1 Jul 1935



Cancelled: 27 Apr 1929

Cancelled: 1 Jul 1935





# SOUTHAMPTON WEST

- 3 different label types, 1 sheet and 2 coil.
- Earliest known usage: 1931, Latest known usage: 19 Mar 1948



Cancelled: 10 May 1933





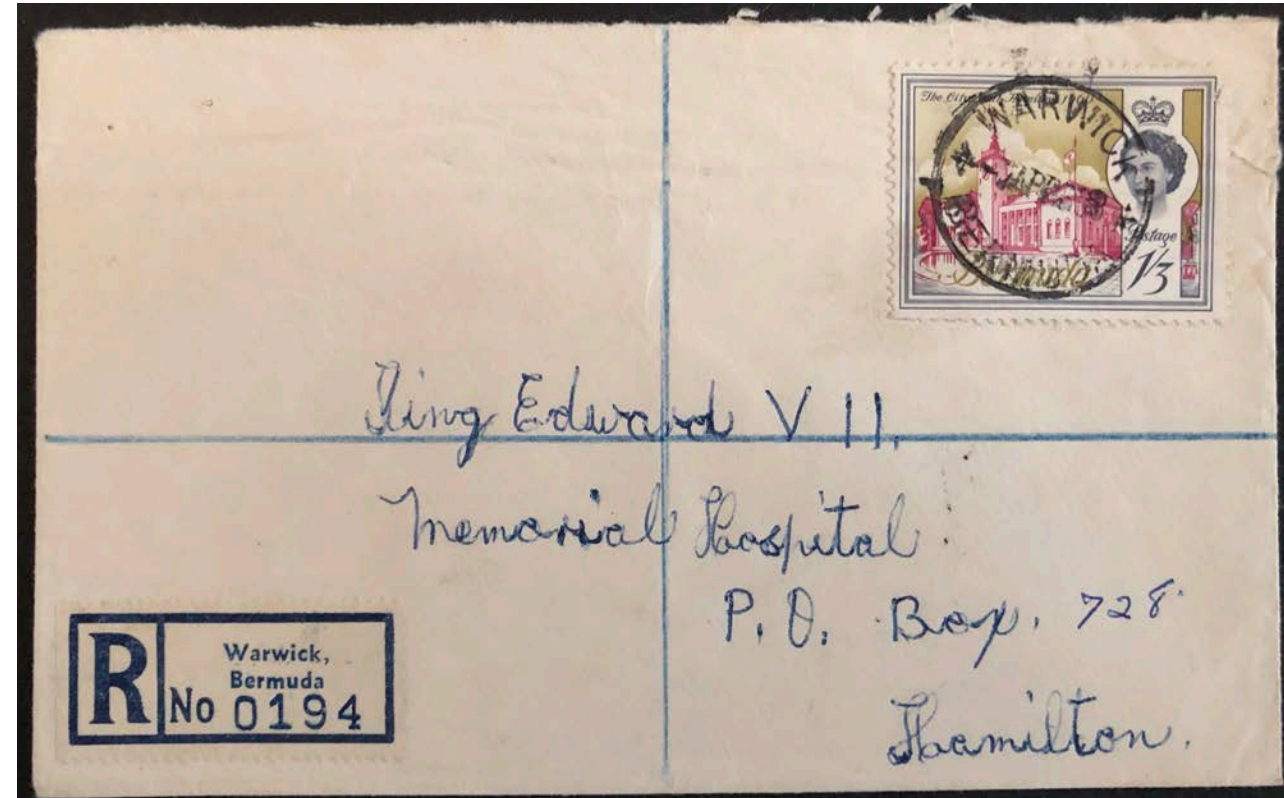
# WARWICK

- 10 different label types, 8 coil and 2 imperforate.
- Earliest known usage: 26 Oct 1942, Latest known usage: 21 Jan 1997



Cancelled: 3 Oct 1955

Cancelled 3 Apr 1968





# WARWICK EAST

- 6 different label types, 5 sheet and 1 coil.
- Earliest known usage: 30 Apr 1923, Latest known usage: 20 Jan 1938



Cancelled: 23 Mar 1931

Cancelled: 23 Nov 1928

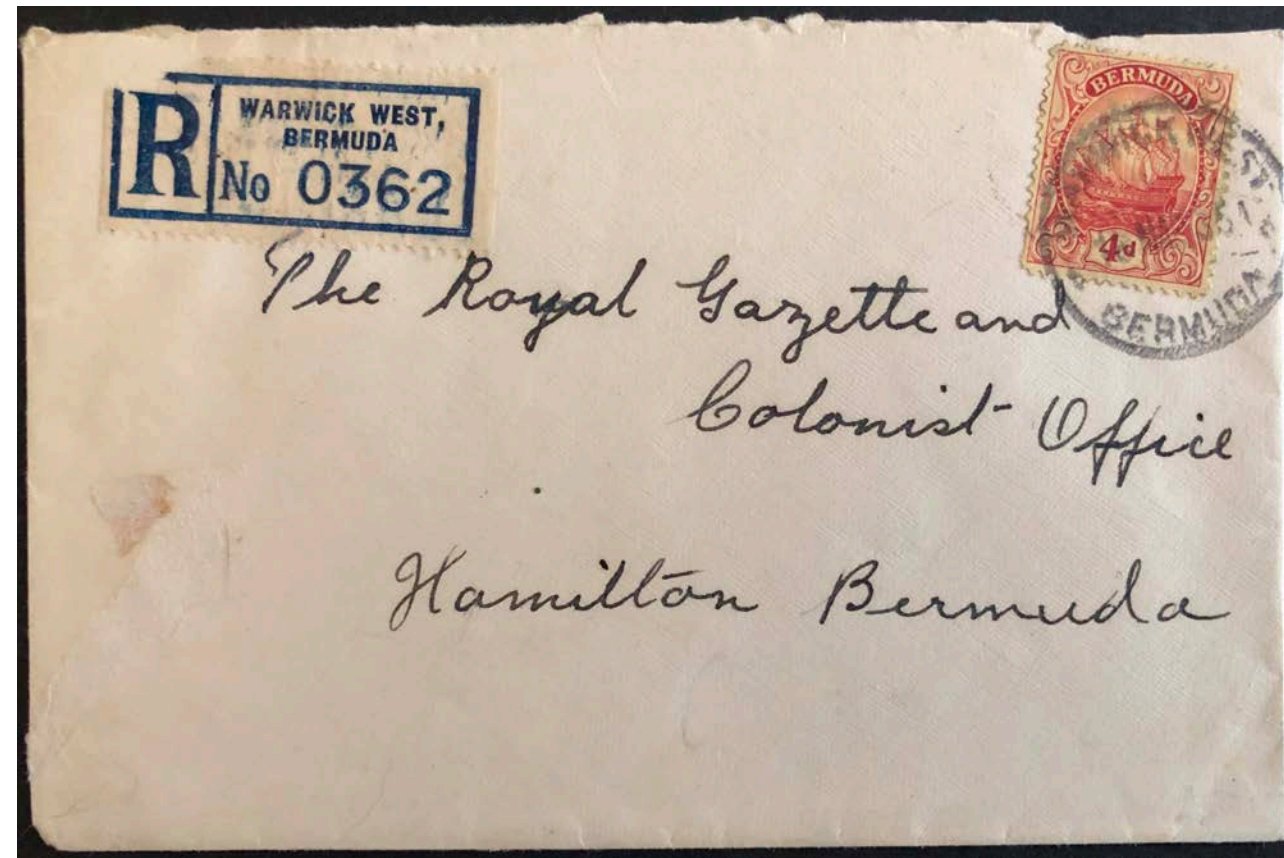


# WARWICK WEST

- 4 different label types, 3 sheet (known with manuscript added in black), 1 coil.
- Earliest known usage: 1922, Latest known usage: 10 Feb 1948



Cancelled: 4 Feb 1929  
(manuscript "Warwick West" added)





# SUMMARY

- During the period from 1909 to 2002 there were 285 different types of Registration labels issued from 34 different Post Offices and Government Offices.
- This is a work in progress as there are undoubtedly more to be found.
- Please contact me with any new types you may have!
- Jeffrey Dow PO Box 3116. Florence, AL 35630
- [jmdcollectibles@yahoo.com](mailto:jmdcollectibles@yahoo.com)