

De la Rue, Bermuda Queen Victoria stamps and their uses

History:

Following an Act by the Bermuda Parliament in 1864, De la Rue was chosen to produce stamps for Bermuda using the head of Queen Victoria from a new die, Diadem VI by Joubert. The first three values were issued in September 1865; 1d for local mail, 6d for mail to the West Indies and British North America, and 1s for mail to the United Kingdom.

Purpose:

This exhibit focuses on the **first definitive issue** stamps of Bermuda featuring the Essays, Proofs, Specimens, issued stamps and local provisional overprints. It includes many of the printings, plate flaws, errors and usages.



Essays for the original three values issued in 1865.

Ex Ludington

Treatment: the exhibit is divided to show:

- I: Watermark Crown CC (by value by issued date)
- II: Provisional stamps: 1874 and 1875
- III: Compound perforations (by release date)
- IV: New values 1880
- V: Crown CA
- VI: One Farthing 1901

Legend:

Title - Black new information, grey for repeating information

Black type - shows general information

Red type - rarity statements

Blue type - ships and route information

Rarity:

This exhibit includes **all** of the Essays; examples of **all** of the Die Proofs and scarce stamps including multiples, use and major errors. Items of special interest are in a red border, a “e” by an item indicates that the item has a certificate of genuineness. Special items include the essays of the 1865 issue, the 3d Essay for 1873, the block of four of the 1874 trial provisional of 3d on 1d and the errors on the 1875 values overprinted “One Penny”, the “Moncrieff” cover, and the Appendix sheet with the perf 12 colour trials and change of watermark to Crown and CA. Note: There is not enough Bermuda material to show 8 frames.

Research:

New discoveries: 3d stamp, from personal research and joint collaboration proving that the orange shade is the first printing as shown by the dated cover and cds example; and a new find of the largest recorded block of 18 of the 3d yellow-buff. 1901 One Farthing printed on gummed side.

References:

- Ludington, M. H. The Postal History and Stamps of Bermuda
- Easton, J The De la Rue History of British and Foreign Postage Stamps 1857 - 1901
- Samuel, M Specimen Stamps of the Crown Colonies 1857 - 1948
- Bermuda Collectors Society, Bermuda Post 1986 - current
- David Cordon & Michel Forand: The Bermuda Specialized Stamp Catalogue

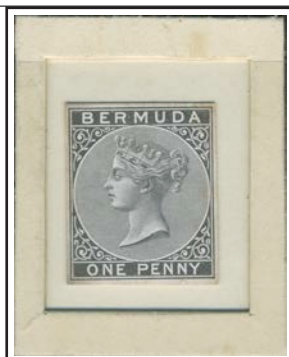
Section: I: First issue: 1865 - 1888

One Penny - preproduction

Watermark: Crown and CC

1d stamp.

The inland rate was 1d per ounce from 1842 until 1890 when it was changed to 1d per ½oz. The one penny stamp was also used with the 6d stamp for the 7d rate introduced in 1868 until 1877 for mail to the UK via New York.



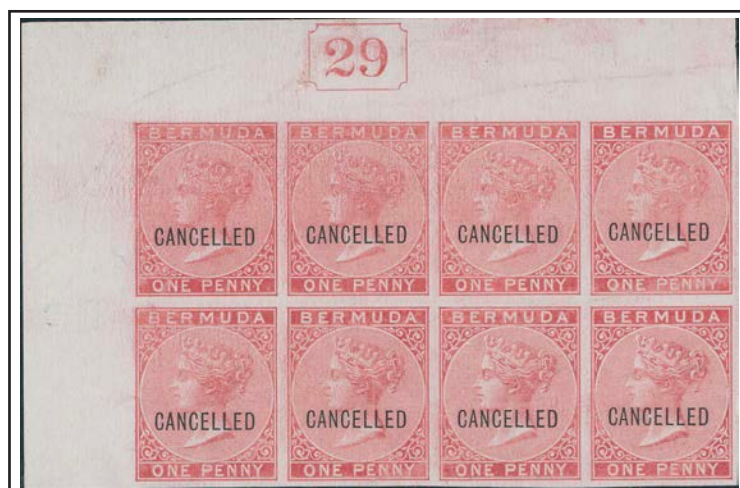
Cut down-Die Proof

Sunk in card. Ex Tucker

5 examples recorded, no full sized die proofs known.

Essays are produced for the design concept. The accepted design is then engraved on a piece of steel to produce a **Master Die**. This die must go through a hardening and then striking of the die onto a copper sheet to produce the printing plate. **Proof** images are taken from the master die at each stage of the process to ensure no damage has occurred. Most proofs from the Master Die were struck on heavy card approx 90 x 60mm; many early examples were reduced to the stamp size for ease of retention in the DLR records.

One Penny - post production



CANCELLED

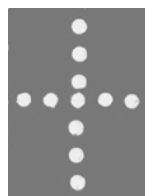
Sans-serif 13.75 x 2.5mm, Samuel D7 1863-84

A complete colour proof sheet of 240 stamps was printed of both the 1d and 3d with the CANCELLED overprint and was known to be used to cancel reference sheets. Due to the inclusion of the 3d value which was not issued until 1873 it is the view of the exhibitor, and others, that these were printed for the 1872 Kensington Exhibition in London.

Section: I: First issue: 1865 - 1888
Watermark: Crown and CC

Value: One Penny - perforations

Somerset House
 Gutter margins in centre of the panes.



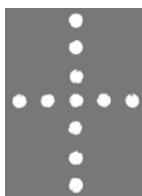
Somerset House perforated all stamps for Bermuda until 1877 after which De la Rue had machines that could do the job. The last 3 printings were done by the De la Rue machine which did not produce a wing margin. Note the block of 30 is 6 stamps wide, which with the Somerset House machine would have a wing margin on the right (as this is from the upper left pane). In addition the perforations are more even.

Ludington states (page 240) that the (three) printings after 1 January 1877 were perforated by De la Rue. However Easton writes that DLR did not have their own machines until late 1878.

Indeed, if the final three printings were done by DLR then the final two printings of the 2d (1877 and 1878) should have also been perforated by DLR but this is not the case.

On this basis the exhibitor believes that only the 1880 1d printing on CC watermarked paper was actually perforated on the DLR machines.

De la Rue



Largest recorded block with DLR perforations, one of two such recorded. Upper left pane. Positions 19-24/43-48; positions 23, 32, 44 and 47 with plate flaws.
 Ex Ludington.

Printed by De la Rue in four panes of 60 stamps of 6 columns by 10 rows.

Section: I: First issue: 1865 - 1888

Watermark: Crown and CC

One Penny - printings

Perforation: 14 x 14 by Somerset House

Specimen

Specimens arrived in Bermuda in July 1865 and were placed on display at the Public Library from 1st August. The initial order arrived on 9th August with distribution from the Post Offices on 25th September.



Manuscript
Ex Ulrich

Only recorded example



Sans-serif 15 x 2mm
Samuel D2 1863-70
Ex Ulrich

Only recorded example



Sans-serif 15.5 x 1.5mm
Samuel D5 1863-70

3 examples recorded



Serifed 15 x 2mm
Samuel D8 1863-70
Ex Pierce

2 examples recorded

Printings / Shades

It has not been possible to assign the nine printings to specific colours which range with shades from red, rose-red, rose and pale rose



9/21 Sep 1865
128,100



Mid 1866
251,304



<-----Rose red----->



First and second printings are more red and on thinner paper

**Perforation: 14 x 14
by De la Rue**

Bright rose



<-----Rose----->



Pale rose



10 Mar 1880
478,320

Ludington writes that the last three printings were perforated by De la Ruse, however this exhibitor believes that, as explained on the previous page, only the final printing was perforated by De la Rue.

Section: I: First issue: 1865 - 1888
Watermark: Crown and CC

Value: One Penny - varieties
Perforation: 14 x 14 by Somerset House



IMPERFORATE

14 examples recorded, 2 mint and 12 used.

Ex Tucker, Chartwell

The only value for which a coloured plate proof is not recorded is the one penny value. It is believed that the imperforate variety might have been a plate proof that was sent to Bermuda and used by the Postmaster. All genuine used examples have the Killer cancel #2 of Hamilton.

Inverted Watermark

Inverted watermarks are known to exist on a number of shades.



As seen from
the back



Mar 1880 printing
used in St Georges

Multiple - used

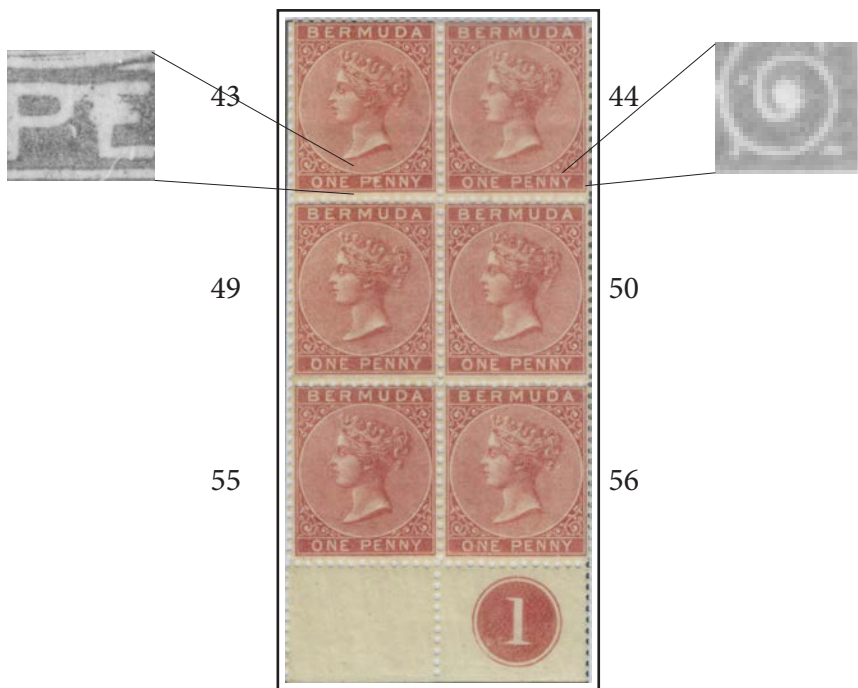


Block of 12 with killer cancel, a block of 8 and another of 4 are also recorded.

Largest recorded used multiple.

Section: I: First issue: 1865 - 1888
Watermark: Crown and CC

Value: One Penny - plate flaws
Perforation: 14 x 14 by Somerset House



Current number 29, being the 29th stamp design for the Crown Colonies.



1st or 2nd printing on thin paper with two major varieties:

No 43 Damaged PE of PENNY (state I) and

No 44 Lower right scroll retouched, omitting leaf below the ball. Minor flaws also occur on 55 and 56.

One of two recorded 1d crown and CC watermark blocks with plate number.

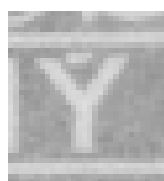
One of two recorded 1d crown and CC watermark blocks with current number.

49

50

51

52



No 50 Dash in arms of Y

Block of eight from the upper right pane with wing margin on left, proving it must have been perforated by Somerset House.



55

56

57

58

The one penny stamp plate produced a total of 117,000 sheets between 1865 and 1901, and as expected there are many flaws that developed over this period. These flaws are some of the earliest and while the damaged "PE" was repaired, the dash in "Y" was not retouched.

Section: I: First issue: 1865 - 1888
Watermark: Crown and CC

Value: One Penny - use - local
Perforation: 14 x 14 by De la Rue

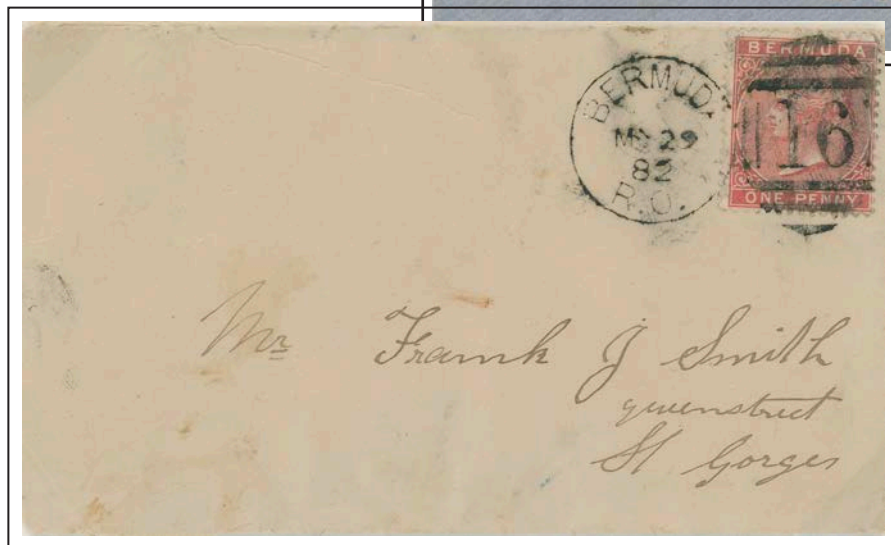


23 SP 1869
1d rate Local mail
per oz. 1842 to 1890

In April 1868 St. Georges stopped using the Killer cancel #1, as it may have been lost or damaged, and started using the killer cancel type 2 with B over 1 which is known to have been used from May 1868. The circular Paid StG (St. Georges) Paid stamp used in black as a datestamp.

28 JU 70
1d rate Local mail per oz.
1842 to 1890

Cancelled in violation of post office regulations with date stamp and without the killer cancel.



MR 29 82
1d rate Local mail
per oz. 1842 to 1890

Cover sent from Flatts to St. Georges, after the reorganization this number was allocated to Devonshire North.

Ex Osborn, no example in Ludington.

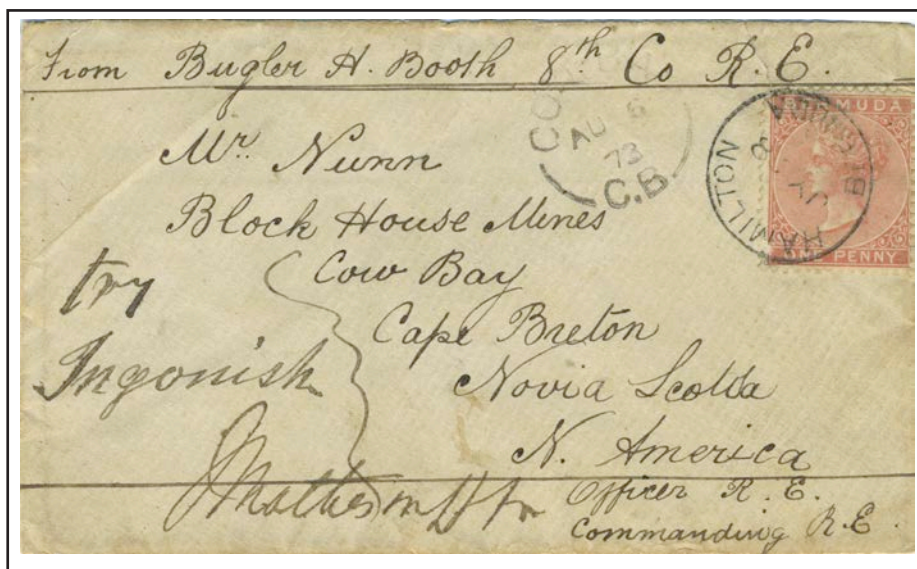
One of 3 covers recorded with this cancel.

Section: I: First issue: 1865 - 1888

Watermark: Crown and CC

Value: One Penny - use - soldiers
concessionary 1d rate

Perforation: 14 x 14 by De la Rue



JY 28 72
3d rate to BNA
31 Mar 72 to 31 Mar 79
1d Soldiers
concessionary rate

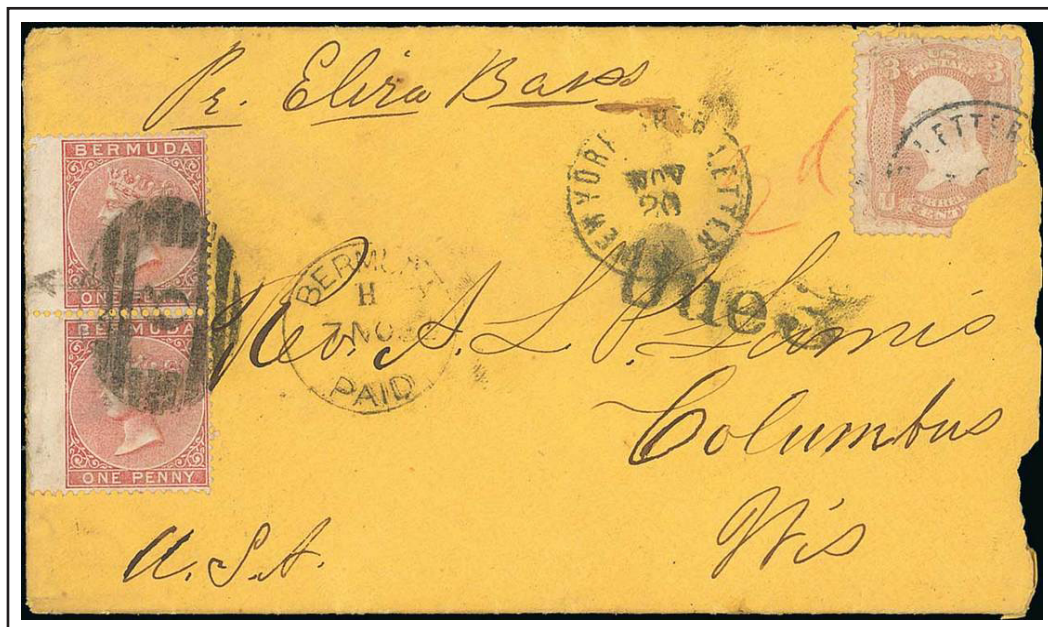
Cunard ship *Delta*
left Bermuda on 28
July under Captain
Shaw for Halifax.

1d stamps were also used to pay the 1d the soldiers concessionary rate. Most of these letters were sent to the U.K., however this example was sent to Nova Scotia. Countersigned Matheson, Officer, Commanding R. E. The exhibitor records **six 1d concessionary covers with first issue 1d stamps** (one of which is the 1d on 3d provisional use shown on Page 38).

Perforation: 14 x 14 by De la Rue

Value: One Penny - use - 2d rate

7 NO 65
2d rate to USA
23 Oct 65 to 1 Jan 68
Single rate



Bark *Eliza Bars's*
left Bermuda on 14
November under
Captain Frith.

Cover sent from Southampton (killer cancel type 1 #6) to Hamilton then on *Eliza Bars's* to New York. Only cover recorded from Bermuda to USA under the short-lived 2d closed mail rate of October 1865. The earliest cover from a receiving office, and the earliest cover with 1d stamp. 3c stamp added to cover the overland postage from New York to Columbus. Ex Ludington.

One of four 1865 stamped covers

(Note: an earlier cover dated 26 Oct was lost in 2008 in mail to US)

Section: I: First issue: 1865 - 1888

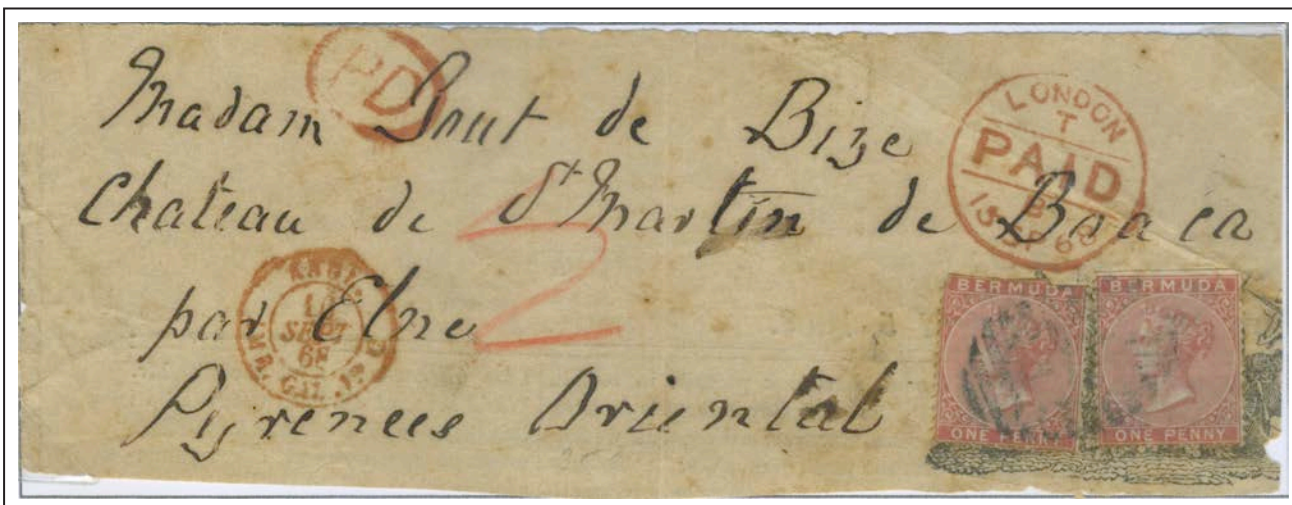
Value: One Penny - use - newspaper rate

Watermark: Crown and CC

Perforation: 14 x 14 by De la Rue

AU 5 1868
2d newspaper
1868 - 30 Mar 1879

From a newspaper dated 5 Aug 1868, 2d newspaper rate to Elne, a commune in Pyrenees-Orientales Departement in Southern France.



Stamps cancelled with B/1 of St. Georges, via London.

Newspapers were free within Bermuda until 1901 and initially free also to the UK; however, after 1867 rates were quoted to far-flung countries of 2d. From 1868 the letter rate to France was 8d per ¼oz, however the 2d rate was applied to the above newspaper.

2d rate to USA remained in effective until ½d stamps were issued in March 1880.

JU 26 1879
2d rate to USA
29 Nov 76 to 31 Mar 79
Single rate



Quebec & Gulf Ports
Steamship's Canima left
Bermuda on 26 June
arriving in New York on
29 June.

Section: I: First issue: 1865 - 1888
Watermark: Crown and CC



Value: One Penny - postmarks
Perforation: 14 x 14 by De la Rue

Killer #1.
Horizontal oval killer cancel
measuring 29mm x 22mm used from
25 Sep 1865 to 31 May 1879.



1
St. Georges



2
Hamilton



3
Ireland Island



4
Mangrove Bay



5
Somerset



6
Southampton



7
Hunt's Bay



8
Riddle's Bay



9
Paget West



10
Paget East



11
Devonshire



12
Harrington Sound



13
Flatts



14
Bailey's Bay



15
Crawl



1
St. Georges



14
Unknown

Killer #2.
Vertical oval killer cancel
measuring 30mm x 20mm with
B over number 1, replacing the
St. Georges cancel and used from
May 1868 to 31 May 1879. The
location of the B/14 is not known.

The main usage is from St. Georges and Hamilton, with St. Georges being the Capital of Bermuda until 1812 and Hamilton the Capital from 1812, followed by Ireland Island which housed the Royal Navy Dockyard. *Numbers 5, 11, and 15 are the rarest with less than 10 examples of each recorded.* The B over number cancel was a contemporary cancellation device with the B over 1 used in St. Georges.

Section: I: First issue: 1865 - 1888
 Watermark: Crown and CC

Value: One Penny - postmarks 1865-79
 Perforation: 14 x 14 by De la Rue

Manuscript cancellations are rarely found on Bermuda stamps.



Dated



C. S. Bourne
 St. Georges

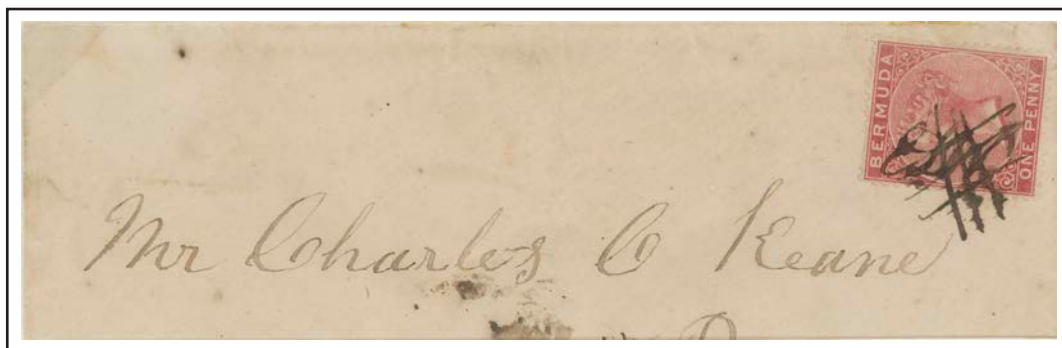


N. T. Butterfield
 Hamilton



Lines

March 1867 example
 on cover from Warwick
 (Riddles Bay) initialed
 JDW (John Darrell
 Wainwright) Receiving
 Officer Keeper at Warwick
 from Jan 1866 to Dec 1872.
 Only recorded example of
 pen cancel on cover.



Circular datestamp diameter 24mm used
 circa 1870 to June 1879 used concurrently
 with the killer cancellations, the number
 corresponds to the receiving office killer
 cancellations.



No number
 1873



No number
 187-



No number
 No date



5
 Somerset



6
 Southampton



Large 7
 Hunt's Bay



Small 7
 Hunt's Bay



8
 Riddle's Bay



9
 Southampton



11
 Devonshire



(1)2
 Harrington Sound

The "PAID" datestamps are scarce cancelling the stamps, as they were used in conjunction with the killer cancellations, shown on the previous page, or as a receiving datestamp. Only known bearing numbers from 5-12 (10 not recorded) as per the killer cancellations. More common are the examples without a date and just "187-" without the final year in the date.

Section: I: First issue: 1865 - 1888

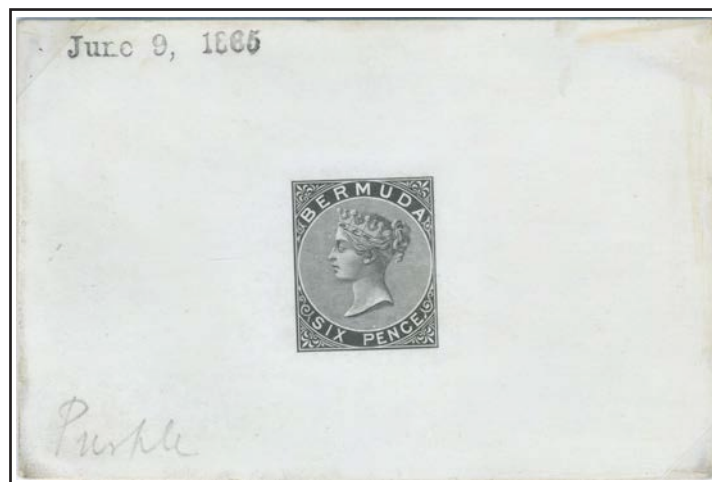
Value: Six Pence - Pre-production

Watermark: Crown and CC

6d stamp.

The 1865 rate of 6d was for mail to British North America and to the West Indies. In 1868 this rate was introduced for British North America mail via New York and mail to UK via NY had a 7d rate.

Essay - progressive die proof



Die proof showing ornaments either side of the upper and lower tablets etched in by hand on glazed card.

Ex Pierce, Ludington.

Unique

Die proof



Cut-down die proof.

3 examples recorded, no full-sized die proofs known.

Plate proof



Sep 1865

Deep purple

*Less than 6
examples recorded*

The plate proofs were printed on gummed and watermarked Crown and CC paper. The 6d value is the only one known in (three) different shades; deep purple, dull mauve and bright mauve. The deep purple was replaced with the lighter colour due to the difficulty in seeing the black postmarks.

Specimen



Sans-serif 15.5 x 1.5mm

Samuel D5 1863-70

3 examples recorded in black



Sans-serif 15.5 x 1.5mm

Samuel D5 1863-70

2 examples recorded in blue

Section: I: First issue: 1865 - 1888

Watermark: Crown and CC

Value: Six Pence - 1st printing

Perforation: 14 x 14 by Somerset House

Printings



9 Sep 1865

111,840

Deep purple



Five blocks of four recorded



Largest multiple recorded.

Ex. Tucker

Section: I: First issue: 1865 - 1888
Watermark: Crown and CC

Value: Six Pence - Second & Third printings
Perforation: 14 x 14 by Somerset House

Plate proof



July 1874
Dull Mauve
*Less than 10
examples recorded*



Manuscript
Samuel DMS
1862-74
*Only example
recorded*

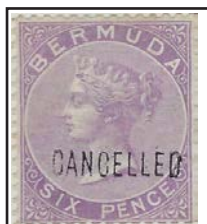


San-serif
15 x 2.75mm
Samuel D2
1860-68
*Only example
recorded*



San-serif
14.5 x 2.5mm
Samuel D11
1870-84 (June)
3 examples recorded

Cancelled



Sans-serif 13.75 x 2.5mm
Samuel D7 1863-82
3 examples recorded

The Cancelled overprint is
normally only found on items from
the De ;a Rue day book

Printings



2 Jul 1874
22,080
Mauve



7 Sep 1875
147,600
Dull mauve

Inverted Watermark



As seen from
the back



2 Jul 1874
Mauve



7 Sep 1875
Dull mauve

Section: I: First issue: 1865 - 1888
Watermark: Crown and CC

Value: Six Pence
Perforation: 14 x 14 by Somerset House

Varieties



Lower right stamp has a break below the “N” of “PENCE”.

Multiples



Mauve



Dull mauve



Mauve



Dull mauve

Largest recorded used multiple

Section: I: First issue: 1865 - 1888
Watermark: Crown and CC

Value: Six Pence - use
Perforation: 14 x 14 by Somerset House

Earliest recorded use of the 6d stamp

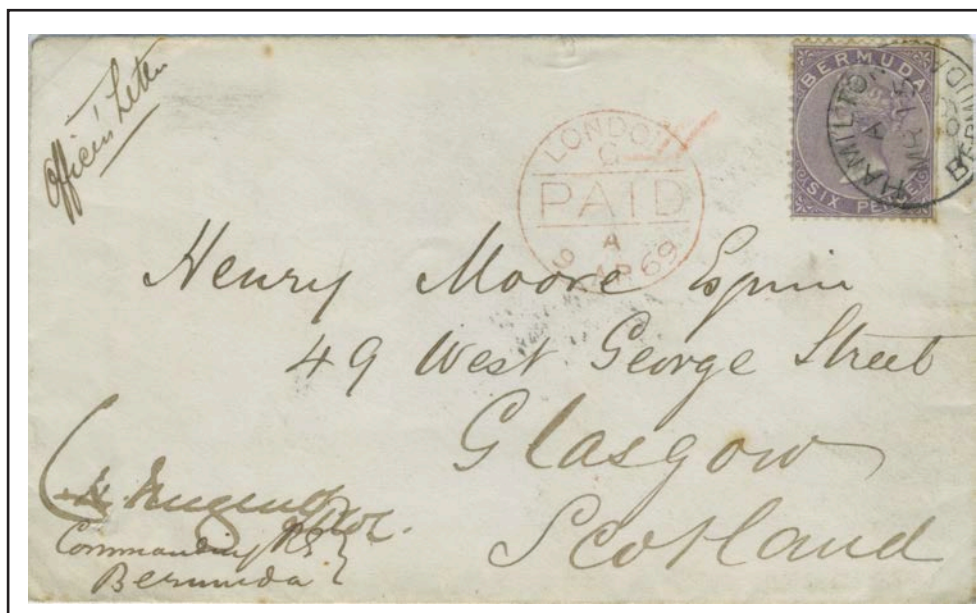


4 AU 1866
6d rate to BNA
14 Feb 65 to 31 Mar 72
Single rate

The *Alpha* departed
Bermuda on 4th
August arriving in
Halifax on 7th.

MR 15 1869
1s rate to GB,
reduced to 6d for officer
concessionary rate
1875 - 1879

This letter was carried on the *Delta* to Halifax and then on the *Kangaroo*, which left Halifax on the 26 March arriving Queenstown Ireland on 9 April, before being transferred into the British mail system for delivery in Scotland.



Only recorded cover with 6d stamp with the circular datestamp used for cancellation in violation of regulations (should have had the killer cancel). Ex Osborn

Section: I: First issue: 1865 - 1888
Watermark: Crown and CC

Value: Six Pence - use
Perforation: 14 x 14 by Somerset House

SP 22 1873
6d rate to GB via Halifax
31 Mar 73 to 31 Mar 79
Triple rate

Delta departed 22
September for Halifax,
the *Hiberian* departed
Halifax 7 October,
arriving Queenstown
15 October.



Triple 6d rate for letter 1 to 1½oz to UK via Halifax.



MR 13 73
6d rate to GB via Halifax
31 Mar 73 to 31 Mar 79
Quadruple rate

Mr. Cunard held a contract between July 1854 and January 1880 to deliver mails from Halifax to Bermuda to St. Thomas and back every four weeks, connecting with transatlantic steamers at Halifax and St. Thomas. *Alpha* (635 gross tonnes) under Captain Hunter departed Bermuda on 13 March, arriving in Halifax to meet the *Austrian*, which departed Halifax on 25 March, arriving Queenstown on 3 April.

Quadruple of 6d rate, for letter 1½-2oz, to UK via Halifax with four 6d deep purple stamps.

Section: I: First issue: 1865 - 1888

Watermark: Crown and CC

Value: Six Pence - use

Perforation: 14 x 14 by Somerset House

The 7d rate was introduced in 1868 for mail to the United Kingdom via New York, this rate stayed in effect until 1877.

OC 6 1871
7d rate to GB via NY
1 Jan 68 to 31 Mar 77
Single rate



Cunard Java dep
NY 11 Oct arr QT
20 Oct

MR 13 1873

6d rate to GB via Halifax

31 Mar 73 to 31 Mar 79

Septuple rate

4d registration fee to UK

1 Jan 1866 to 31 Mar 79

St. Georges oval cancel 13 March 73. The straight line REGISTERED was used from 1868 to 1880 and is only recorded on 4 covers

Block of seven, largest recorded used multiple of 6d purple.

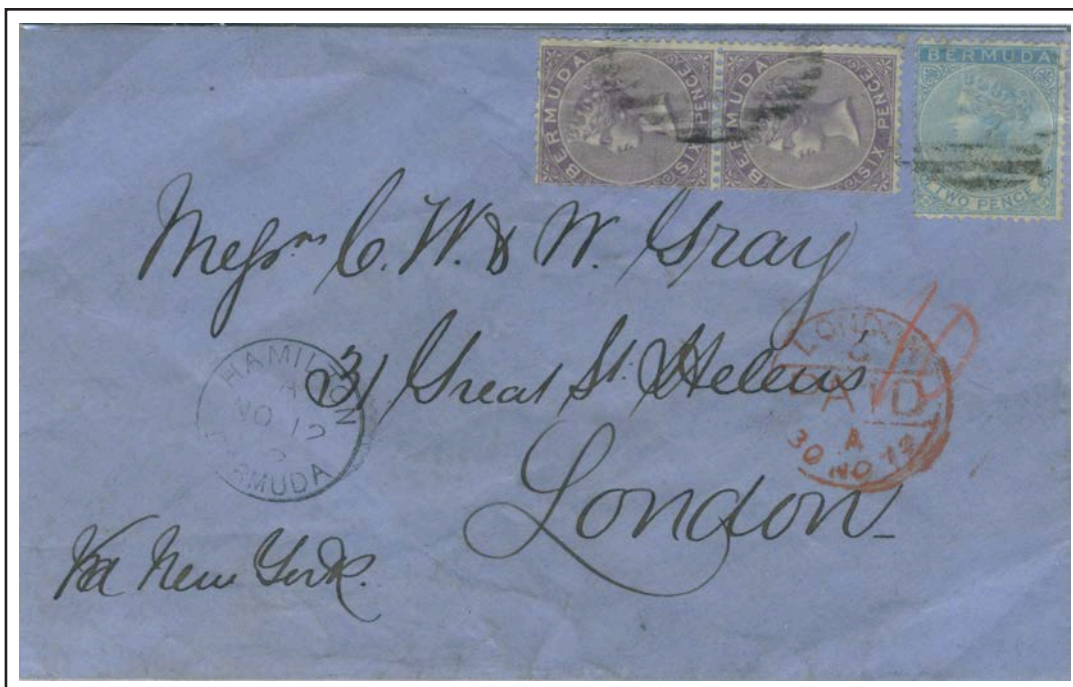
Mail carried on the *Alpha* which sailed on 13 March, *Austrian* left Halifax 25 Mar arriving at Queenstown on 3 April.



Section: I: First issue: 1865 - 1888
 Watermark: Crown and CC

Value: Six Pence - use
 Perforation: 14 x 14 by Somerset House

NO 12 72
 7d rate to GB via NY
 1 Jan 68 to 31 Mar 77
 Double rate



Steamer *San Francisco*
 sailed from Bermuda
 on 6 October. Cunard
Russia dep New York 20
 November, arr Queens
 Town 29 November.

Pair of 6d deep purple and 2d dull blue. Red "10" showing 2d to Bermuda, 2d to USA and 10d payable to GB.

The owners of the steamer *San Francisco* held a contract for mail between Bermuda and New York from August 1870 to November 1872. The top cover left Bermuda on 6 October 1871 arriving in New York on 10 October, the bottom cover left Bermuda on the penultimate trip of the *San Francisco* on 12 November arriving on 15 November. The contract was cancelled at the end of the year.



DE 21 72
 7d rate to GB via NY
 1 Jan 68 to 31 Mar 77
 Triple rate

Triple rate for mail via New York to UK with single pair of 6d deep purple. 1s3d payable to UK, 3d to Bermuda and 3d to USA.

Magnolia left Bermuda on 1 December for New York. Cunard's *Parthia* left New York on 27 December arriving London 6 January.

Section: I: First issue: 1865 - 1888

Value: One Shilling - Pre-production

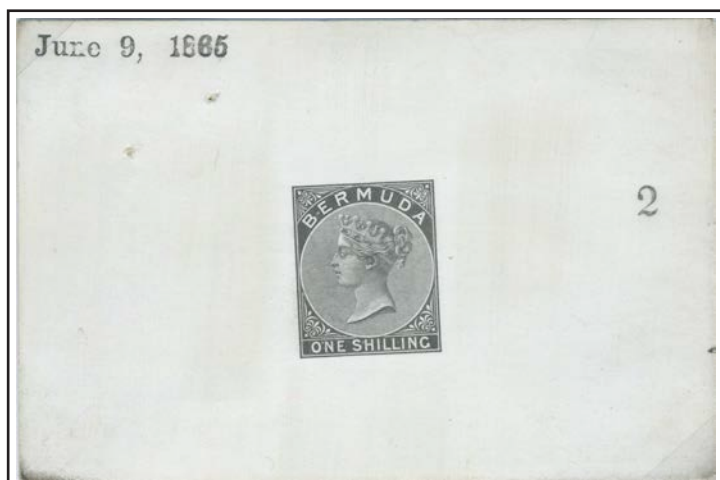
Watermark: Crown and CC

1s stamp.

The 1865 rate of 1s was for mail to the United Kingdom, via Halifax until 1872. The 1s rate remained until 1877 for mail via St. Thomas.

DIE PROOF ESSAY

DIE PROOF



Unused Die 2 proof showing no ornaments either side of the upper tablets on glazed card.

Unique

Ex Ludington



Accepted design

Only full size die proof recorded.

Ex Tucker

PLATE PROOF



Approx. 12 examples recorded including unique block of four

ex Tucker



Sans-serif 14.5 x 2.5mm
Samuel D11 1870-84 (June)

2 examples recorded

Specimen



Sans-serif letters
15.5 x 1.5mm (D5)

Less than 10 examples recorded



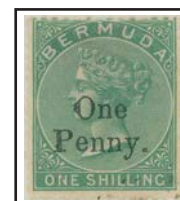
Sans-serif letters
15.5 x 1.5mm (D5)

2 examples recorded in blue

The first printing is green while the second printing is a light green.



9 Sep 1865
92,820
Green



24,000 stamps overprinted 1d
in early 1875. Therefore the
September 1865 printing.

Section: I: First issue: 1865 - 1888
 Watermark: Crown and CC

Value: One Shilling - 1st printing
 Perforation: 14 x 14 by Somerset House

Multiples



Largest multiple recorded of the 1s.

Ex Tucker.

Stamps issued on 25th September 1865. Mailed in Hamilton with killer cancel "2" and CDS "H" Paid stamp (*unique in red*) dated 28th to London via Halifax.

Earliest recorded stamped cover.



28 SP 65
 1s rate to GB via Halifax
 1 Apr 63 to 31 Mar 72
 Single rate

Alpha departed Bermuda 30 September, arriving Halifax on 4 October, *Cuba* departed Halifax 13 October arriving Liverpool 21 October.

Ex: Tucker

Section: I: First issue: 1865 - 1888
 Watermark: Crown and CC

Value: One Shilling - 2nd printing
 Perforation: 14 x 14 by Somerset House



Only recorded mint block
 of the second printing.



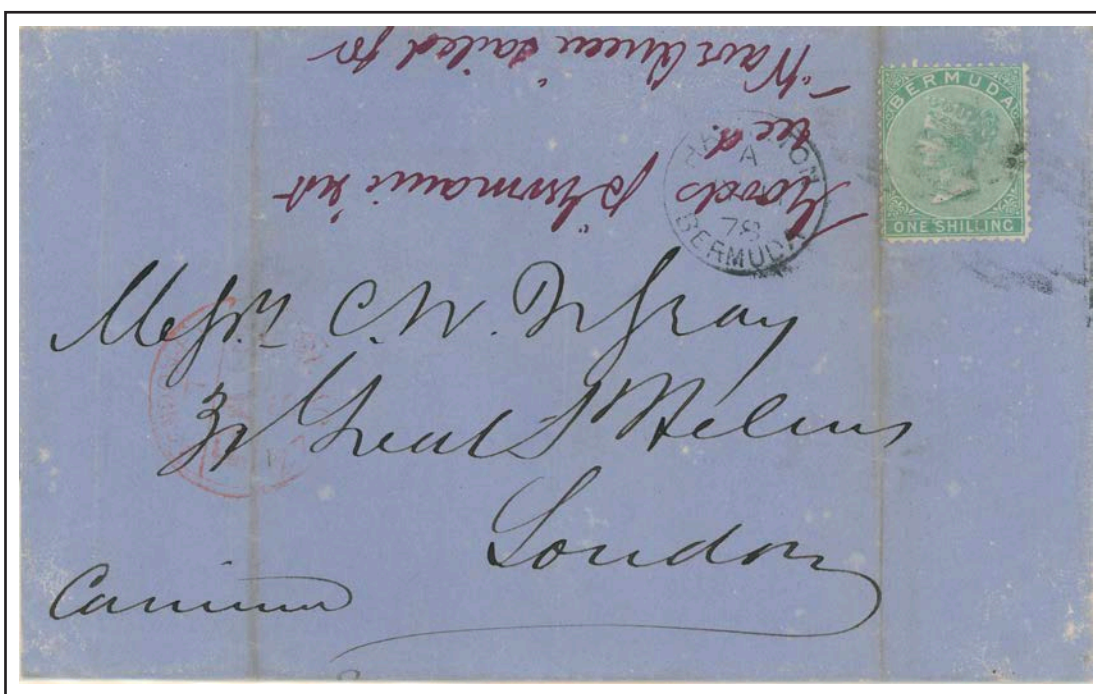
7 Sep 1875
 24,000
 Light green



Only recorded used block
 of the second printing.

11 JY 78
 6d rate to GB via New York
 1 Jan 77 to 31 Mar 79
 Double rate

Canima departed Bermuda
 11 July for New York,
 arriving 13 July. London paid
 datestamp, in red, dated 27
 July.



Inverted watermark



As seen from
 the back



The inverted watermark is only recorded on the second printing.

Section: I: First issue: 1865 - 1888
Watermark: Crown and CC

Value: One Shilling - use
Perforation: 14 x 14 by Somerset House

Via Halifax



13 DE 65
1s rate to GB via Halifax
1 Apr 63 to 31 Mar 72
Single rate

Alpha departed Bermuda
13 Dec for St. Thomas,
returning to Bermuda on 23
Dec, arriving Halifax on 28
Dec and Liverpool on 13 Jan.

A total of four covers are recorded used in 1865.

Via St Thomas

25 JU 67
1s rate to GB via St. Thomas
1 Jan 68 to 31 Mar 77
Single rate



Alpha departed Bermuda
25 June for St. Thomas,
meeting RMSP *Tasmanian* to
Southampton, arriving 11 July
and London 15 July.

Ex Ludington

Section: I: First issue: 1865 - 1888

Watermark: Crown and CC

Value: One Shilling - use

Perforation: 14 x 14 by Somerset House

There were two routes for mail to UK, either via St. Thomas or
via Halifax.



5 JU 67

1s rate to GB via Halifax

1 Apr 63 to 31 Mar 72

Single rate

4d registration fee to UK

1 Jan 1866 to 31 Mar 79

Alpha departed 7 June
and arrived Halifax 11
June; Cuba departed
Halifax 20 June, arriving
Liverpool on 28 June.

There was no direct mail until 1872. This is one of the earliest known registered covers from Bermuda.
The reverse has an arrival mark Dover 'JU 29 67'.

Ex Tucker

18 AU 68
1s rate to GB via St. Thomas
1 Jan 68 to 31 Mar 77
Double rate



Delta departed 18 August
for St Thomas.

The '1/10' showing the amount due to UK, the remaining 2d credited to Bermuda.

Section: I: First issue: 1866 - 1888
Watermark: Crown and CC

Value: Two Pence
Perforation: 14 x 14 by Somerset House

2d stamp.

The 2d stamp was not printed until 1866 for the foreign newspaper and closed mail rates. The registration regular rate to the US wasn't reduced to 2d until 1877 followed by a reduction in the registration fee to 2d in 1879.

Pre-production



Cut-down die proof
*4 examples recorded,
no full sized die proofs recorded.*



Plate proof
2 examples recorded

Specimen



Manuscript
Only recorded example



Sans-serif 15.5 x 1.5mm
Samuel D5 1863-70
3 examples recorded



Serifed 15 x 2mm
Samuel D8 1863-70
Bright blue
Only recorded example



Serifed 15 x 2mm
Samuel D8 1863-70
Bright blue
Only recorded example

Multiples



Dull blue
May 1866 printing



Bright blue used pair.



Bright blue
September 1878 printing.

Section: I: First issue: 1866 - 1888
Watermark: Crown and CC

Value: Two Pence
Perforation: 14 x 14 by Somerset House

Printings

Dull blue - shades

4,800 stamps overprinted 1d
in April 1875.
Therefore part of the Nov
1874 printing.



1 Mar 1866
59,640
Dull blue



26 Jan 1870
10,560
Dull blue



13 Nov 1874
13,200
Dull blue



7 Sep 1875
49,480
Dull blue

Bright blue - shades



8 Jan 1877
244,800
Bright blue



Current number 32, being the 32nd
stamp design for the Crown Colonies.



23 Sep 1878
242,160
Bright blue

Inverted wmk



As seen from
the back



1866
Dull blue



1875
Dull blue



1877
Bright blue

Only the 1d stamps were ever perforated using the De la Rue machines. Although the last two printings were late enough to have been perforated using the De la Rue machines, the bright blue is seen with wing margins showing that the Somerset House machine was used for perforating this value.

Section: I: First issue: 1866 - 1888

Watermark: Crown and CC

Value: Two Pence - use

Perforation: 14 x 14 by Somerset House

NO 14 78
3d rate to BNA
31 Mar 72 to 31 Mar 79
Single rate

This letter was sent via New York on the *Canima* which left Hamilton on 14th November, arriving in New York on 17th.

3 JU 71
5d rate to USA
14 Feb 65 to 28 Nov 1876
Single rate



The cover missed the steamer to New York and was instead placed on the *Delta* to Halifax, then by rail to St. John and finally SS *New York* to New York via Eastport, Portland and Boston.. Ex Ludington

One of 2 covers at the 5d rate to USA.

JY 10 79
2d rate to USA
29 Nov 76 to
31 Mar 1879
Single rate

The *Canima* left Hamilton on 10th July arriving in New York on 13th.



2d bright blue with duplex type #4 of Mangrove Bay for 2d rate to USA.

Direct mail rate to the US was 5d from 1868 which was reduced to 2d from 1876 to 1879. The rate to British North America was 6d from 1865 to 1 April 1872 when it was reduced to 3d.

Section: I: First issue: 1866 - 1888
 Watermark: Crown and CC

Value: Two Pence - use
 Perforation: 14 x 14 by Somerset House



MY 6 1869
 8d rate to France
 per quarter oz.
 1868 to 30 Mar 72
 Double rate for
 half oz.

'1/2' manuscript in red, 2d for Bermuda and 1s2d for UK. First printing of 2d, single, strip of five and pair, **largest known usage of the 2d franking** . Ex Perreault.

An early wrapper from St. Georges, Bermuda addressed to Bordeaux, France, written by Captain H. A. Tracey of the Royal Artillery Corps R.E. Captain Tracey spent two years on Bermuda from 1868-69 in charge of food stores and this letter written to a wine merchant may well have been on behalf of the officers' mess.

The wrapper was carried on the R. M. Steamer *Alpha* to Halifax where it was transferred to the *City of Cork* which departed Halifax on 21 May arriving Liverpool arriving there on June 2nd, with onward transit to Bordeaux on 3rd June 1869.

JA 7 80
 4d rate to UK
 1 Aug 79 to 1 Aug 79
 Double rate



RM Steamer *Beta* departed Bermuda on 5 January 1880 to Halifax, the Packet *Austrian* departed Halifax on 17 January arriving Liverpool on 27 January.

Two pairs of the bright blue shade.

Section: I: First issue: 1873 - 1888
Watermark: Crown and CC

Value: Three Pence - Pre-production

3d stamp.

On April 1st, 1872 the rate to Canada was reduced to 3d with the first stamps being delivered and issued in March 1873.

Essay



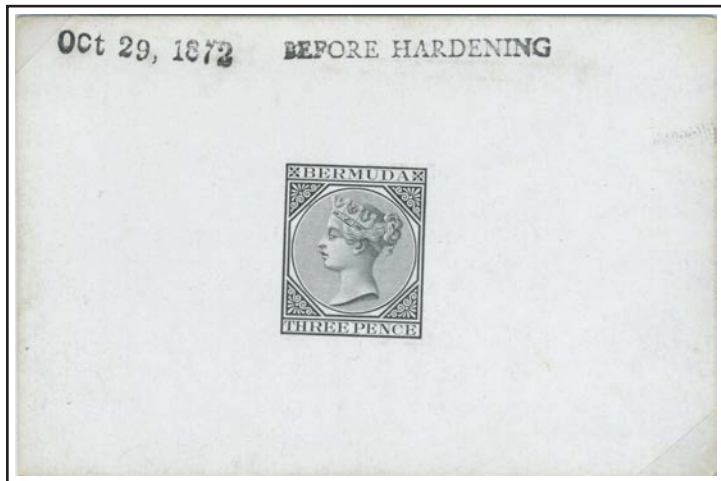
Essay

Printed on stamp sized unsurfaced card with
corner ornaments in Chinese white.

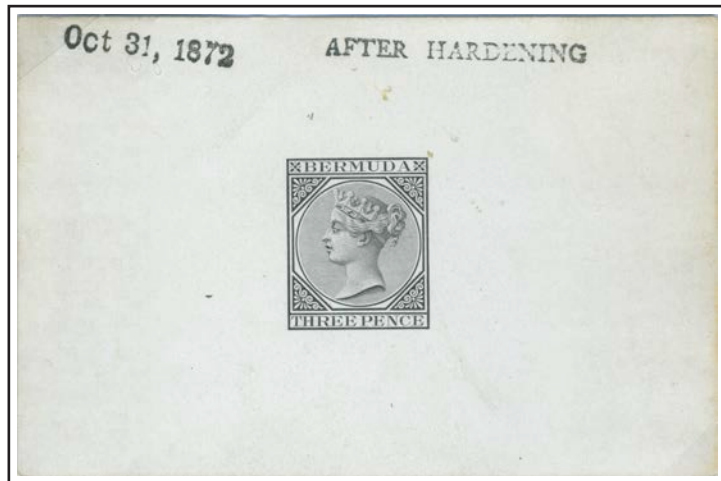
Unique

Ex Ludington

Die proof



Before Hardening
8 examples recorded



After Hardening
2 examples recorded

Three cut-down die proofs
are also recorded

A new design was created for the 3d value; as such a new essay was prepared by De la Rue. Die proofs were produced to check the image before and after the hardening process.

Section: I: First issue: 1873 - 1888

Watermark: Crown and CC

Value: Three Pence - Pre-production

Plate Proofs

Plate proof



*only recorded multiple of the
3d plate proof*

Ex Tucker



Serifed 15 x 2.5mm

Samuel D8 1863-82

2 examples recorded



Sans-serif 14.5 x 2.5mm

Samuel D11 1870-84 (June)

3 examples recorded

Three Pence - post production

Plate proofs are known in the issued colour with and without “SPECIMEN” handstamp and on watermarked and gummed paper. The examples overprinted “CANCELLED” are on a thin card stock. It is known that De la Rue exhibited sheets at the 1872 Kensington exhibition.



CANCELLED

Sans-serif 13.75 x 2.5mm

Samuel D7 1863-84

One sheet of 240 examples. *Largest recorded multiple.*

Section: I: First issue: 1873 - 1888

Watermark: Crown and CC

Value: Three Pence - 1st printing

Perforation: 14 x 14 by Somerset House

Printings



San-serif 14.75mm x 1.75mm

Samuel "D4" 1862-82

Only recorded example

Date 1873 = 1st printing. This and the cover below prove the orange shade is the first printing.



10 Mar 1873

9,800

Orange



e

Cover dated 5 June 1873 with 3d orange proving this shade is the first printing



JU 5 1877

7d rate to UK via NY

1 Jan 1875 to

31 Dec 1879



Crop vessel *Hatteras* departed Hamilton 8 June to New York, arriving 11 June. White Star Line *Oceanic* departed NY 14 June arriving Queenstown on 23 June.

e

1873 (5 June) blue envelope from J.T. Bourne, former Confederate Agent at St. Georges, to London via New York at 7d rate with pair of 3ds and a 1d. Manuscript 5 in red, 1d due to Bermuda, 1d due to USA and 5d due to UK. Ex Ludington.

Earliest recorded usage of 3d stamp.

Postmark



Killer cancel #11 for Devonshire.

Only recorded pair with #11 cancel.

Ex Brassler.

2nd printing

Section: I: First issue: 1873 - 1888

Watermark: Crown and CC

12,000 stamps overprinted
One / Penny in May 1875.
This therefore proves the Nov
1874 printing.



2 Jul 1874

21,840

Deep yellow-buff

Current number 57, being the
57th stamp design for the Crown
Colonies.



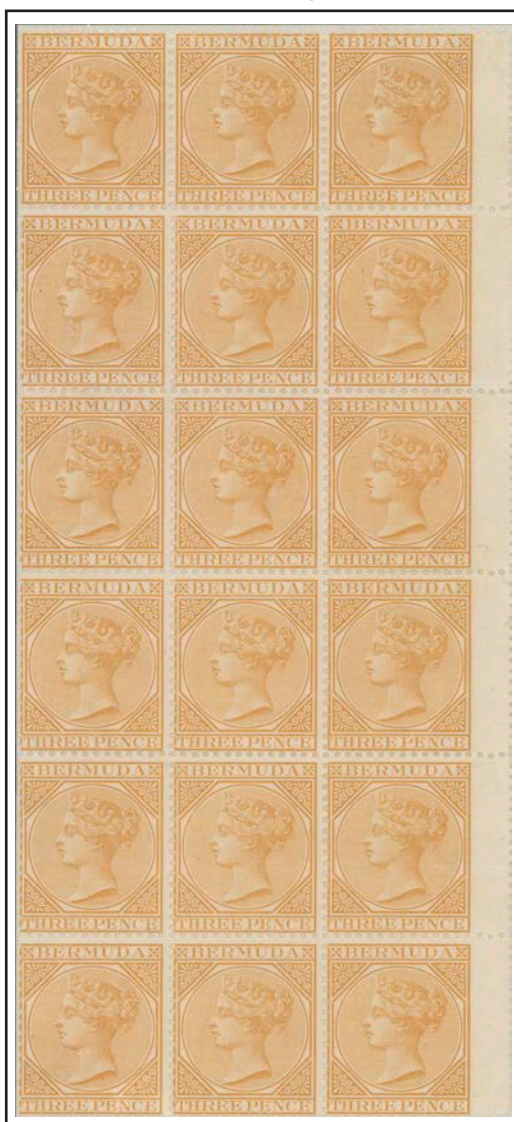
7 Sep 1875

72,000

Pale yellow-buff

Multiple

2nd printing



*Largest multiple
recorded of the 3d
value. This block of
18 was previously
unrecorded.*



Only recorded used block

Ex Tucker



3rd printing

Ex Burrus, Ludington

In addition to these blocks two mint and one used blocks of 4 are recorded. There was a block of 4 of the orange shade in the Tucker sale, however it is believed that this may have been split into singles.

Section: I: First issue: 1873 - 1888

Watermark: Crown and CC

Value: Three Pence

Perforation: 14 x 14 by Somerset House

Inverted watermark



3rd printing



As seen from
the back

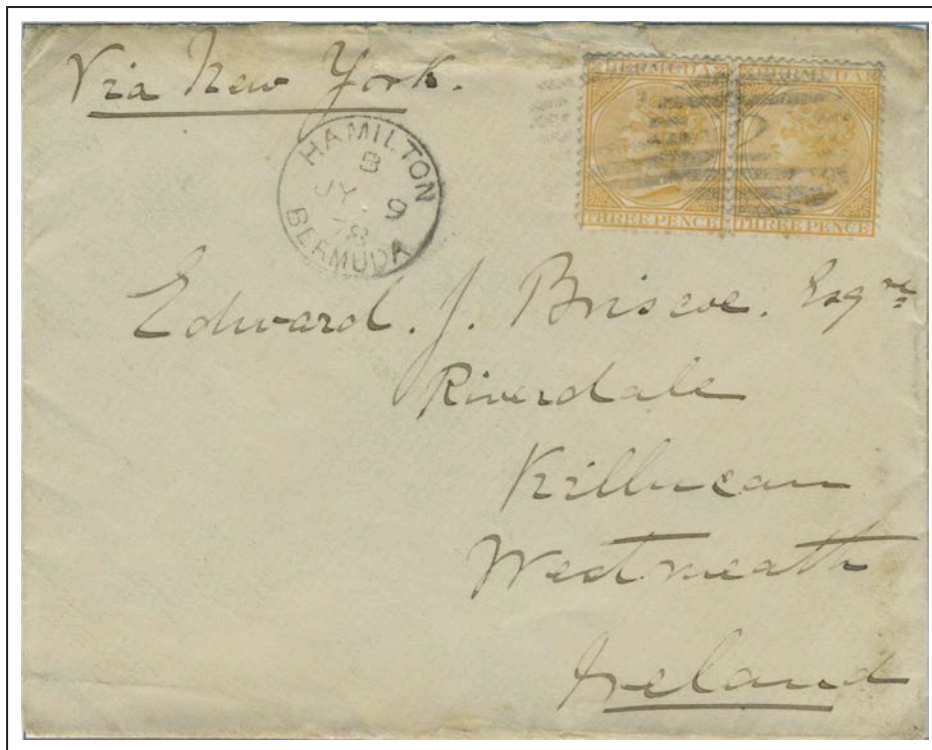
Use

Bermuda to Ireland

JY 9 1878
6d rate to UK via NY
1877 - 1879

The *Canima* departed Hamilton 11 July, to New York arriving on 13th. Back stamp shows arrival date in Ireland on 28 JY.

The rate for mail sent via New York was reduced to 7d in 1868 further reduced to 6d on 23 May 1877 remaining until 31 March 1879. Few covers are known at this rate via New York.



NO 13 77
3d rate to BNA
1 Jan 1875 to 31 Dec 1879

Mail boats sailed from Halifax to Bermuda and then St. Thomas before retracing their path. The mail boat *Beta* departed Bermuda for Halifax on 13 November likely arriving on the 18th or 19th.

Black 3 (cents) due to Canada.

Section: IIa: 1874 Provisional
Watermark: Crown and CC

Value: Three Pence on One Penny
Essay

Due to a shortage of the 3d stamp James Thies, the Postmaster-General applied to the Privy Council to convert 1s stamps to the 3d value needed to pay the single stamp rate to Canada, and was authorised to do so on 21st February 1874.

Essay



These essays were discovered in a drawer and a few copies are now used posthumously after 1879.



One pane of 60 1d stamps were overprinted as an essay. *There are four blocks recorded of which one is a block of six and three blocks of four*, one of which is in the Royal collection.
 Ex Tucker, Chartwell

Value: Three Pence on One Shilling

P and R different

4,000 stamps overprinted, issued 12 March 1874.
Used pairs are the largest known multiples.



The surcharge was individually handstamped by Sergeant Maddox of the Royal Engineers using a handstamp with regular metal printer's type.

Section: IIa: 1874 Provisional
Watermark: Crown and CC

Value: Three Pence on One Shilling

Use

JU 4 74
7d rate to GB via NY
1 Jan 68 to 28 Nov 76
Single rate



Canima left Bermuda on 4 June arriving NY on 8 June. Cunard Line *Scotia* departed NY 10 June arriving Queenstown on 19 June.

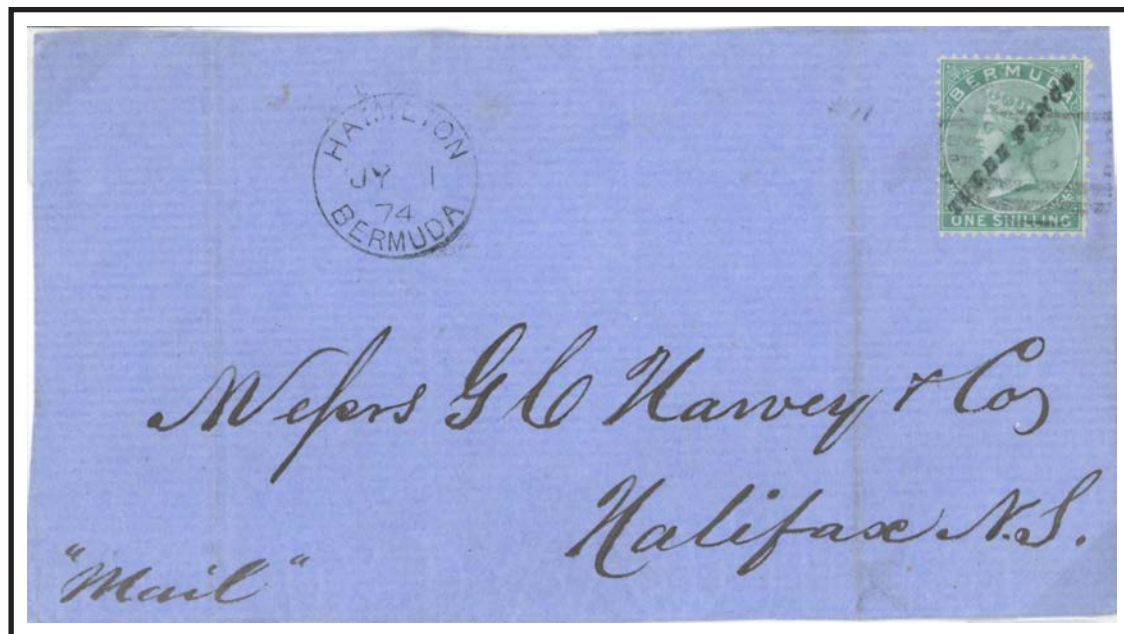
Only cover recorded with pair of overprints with plain "P"

Ex Ludington, Dickgiesser, Osborn.

P and R same

4,960 stamps overprinted, issued 31 March and 15 April 1874

Used pairs are the largest known multiples.



JY 1 74
3d rate to BNA
31 Mar 72 to 31 Mar 79
Single rate

This front would have departed on the *Delta* to Halifax on 2 July arriving Halifax on 14 July.

Front: one cover and two fronts are recorded.

Ex Tucker, Dickgiesser

Section: IIa: 1874 Provisional
Watermark: Crown and CC

Value: Three Pence on One Shilling

P and R same

4,960 stamps overprinted, issued 31 March and 15 April 1874.

Used pairs are the largest known multiples.

2 MY 74
6d rate to GB via Halifax
31 Mar 72 to 31 Mar 79
Single rate

The Alpha departed 5 May
for Halifax, the Nestorian
departed Halifax 19 May
arriving Queenstown 29 May.



Pair of the 3d with the fancy "P".

One of three covers with 3d on 1s.

Ex Tucker, Leuhusen, Osborn

BLOCK type

4,540 stamps overprinted, issued 19 May and 13 August 1874



Other than a used strip of 3 in the Royal Philatelic Collection, used pairs are the largest known multiples.

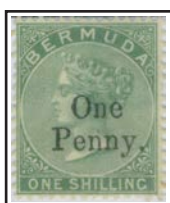
Section: IIb: 1875 Provisional
Watermark: Crown and CC

Value: One Penny on One Shilling

In 1875 Bermuda had a shortage of the one penny stamps. Mr. Donald McPhee Lee, who was the printer and publisher of the weekly “Royal Gazette”, was hired to perform the overprinting. It is believed that printing was done in panes of 60; however there are not sufficient numbers of large blocks for a reconstruction of the setting, which may have been redone during the various overprints.

The initial value used for the overprint was the one shilling stamp which was withdrawn from general stock on three occasions and sent to Lee to be surcharged. Once completed they were returned to the Postmaster-General as follows:

	Group 1	Group 2	Group 3
Withdrawn	14,400 on 11th March	6,720 on 31st March	2,880 on 16th April
Delivered	6,000 on 11th March	4,800 on 31st March	2,880 on 17th April
	6,000 on 23rd March	1,920 on 3rd April	
	2,400 on 31st March		



Killer cancel
#15 of Crawl



Paid I of
Ireland Island

Multiple



Largest recorded multiple
Ex Tucker



Used pair

A total of *three blocks of nine* are recorded along with one block of six, and three blocks of four.

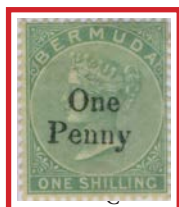
Section: IIb: 1875 Provisional
Watermark: Crown and CC

Value: One Penny on One Shilling

Major variety -
no stop

One
Penny.

normal surcharge



*Only mint copy in private hands, one
other example in the Tapling collection.*

Ex Ludington



*5 examples
recorded*

Ex Ulrich

One
Penny

no stop after 'Penny'

The no stop variety occurs on both the 2d and 1s values, assumed to be from the last setting of the 1s printing so a maximum of 44 of the 1s.

Major variety -
Inverted surcharge



Believed to be one pane of 60 of the 1s were printed inverted,

6 copies recorded (1 mint, 5 used).

Ex Chartwell

Use

JA 5 1875
1d rate Local
1850 to 1920
Single rate



Three covers are known with the 1d on 1s. This cover is the only known cover with the K1 #12 cancellation and the only example of the CDS with "12"; all other examples are missing the "1".

Ex Tucker, Ludington

Section: IIb: 1875 Provisional

Value: One Penny on Twopence

Watermark: Crown and CC

On 21st April 4,800 2d stamps were withdrawn from stock and these were sent to Lee for surcharging.
The surcharged stamps were returned to the Postmaster-General on 23rd April.



Round "O"

Varieties - Major

One
Penny

no stop after 'Penny'



e

e

No stop

No stop

6 mint and 7 used examples
with the "no stop" are recorded

This block of 16 is the *only recorded multiple* of the 1d on 2d.
Stamps 3, 10 and 11 exhibit the round 'O' variety. Ex Tucker

Value: One Penny on Twopence - use



Front, *only recorded front or cover bearing an single example of the One Penny on 2d.*

Ex Tucker

Section: IIb: 1875 Provisional

Watermark: Crown and CC

Value: One Penny on Threepence

On 7th May 12,000 3d stamps were withdrawn. These were sent to Lee for surcharging and upon completion were returned to the Postmaster-General as follows:

5,040 on 8th May

4,800 on 25th May

2,160 on 2nd June, which coincided with the arrival of the new 1d stamps.

Multiple



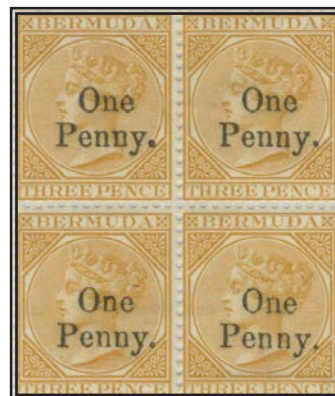
Normal O



Round O



Second day
of issue



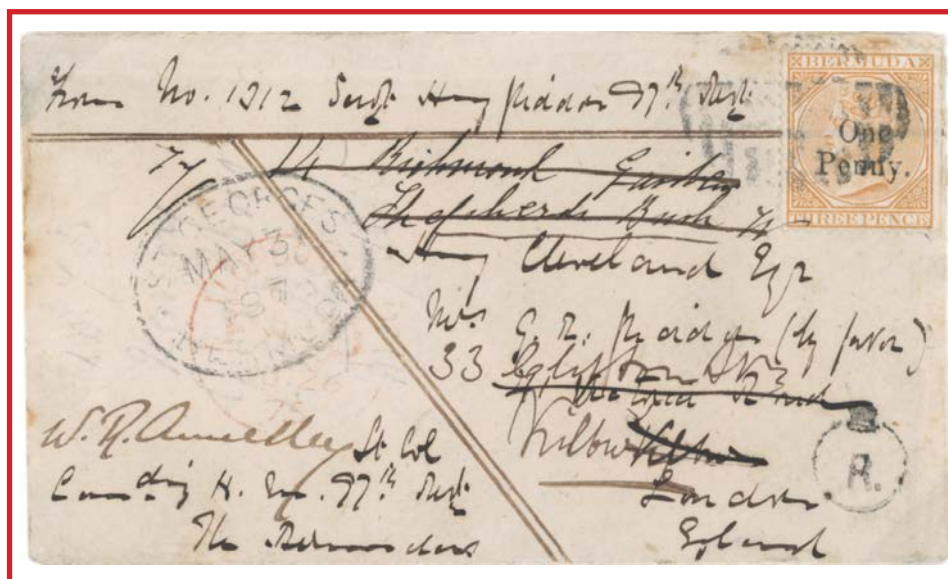
Largest recorded multiple.

Two mint pairs, one used pair and
two blocks of four recorded.

Ex Ludington, Chartwell

Use

MAY 31 1875
6d rate to GB
31 Mar 72 to 31 Mar 79
1d soldiers
concessionary rate



Ex Tucker, Sattin, Pitts

The only recorded 1d soldiers concessionary rate cover with
a stamp with the One Penny overprint.

Section: IIb: 1875 Provisional
Watermark: Crown and CC

Value: One Penny on Threepence

The "MONCRIEFF" cover

26 MY 74
7d rate to GB via New York
31 Mar 72 to 31 Mar 79
Single rate

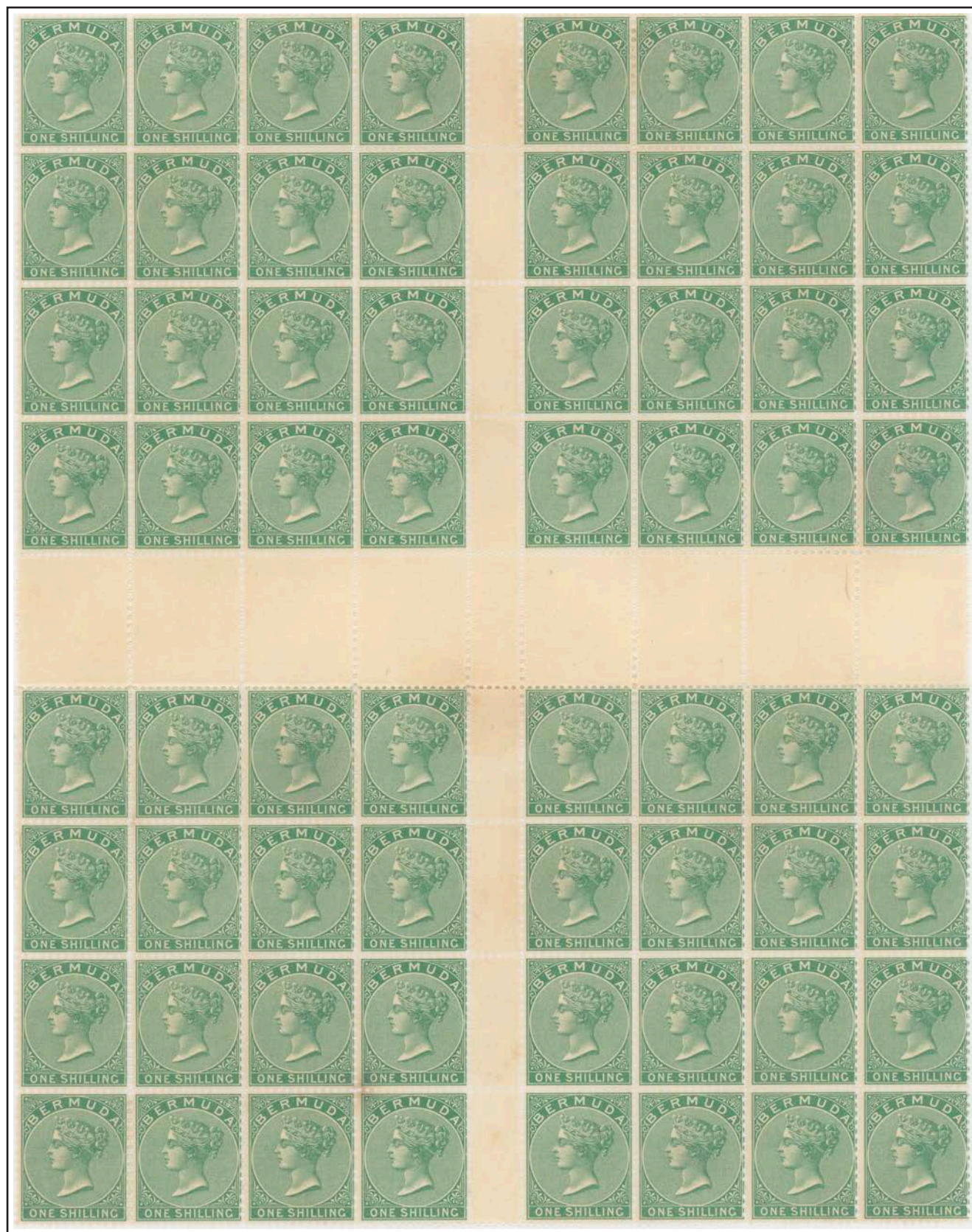
The *Canima* departed 26
May for NY, the *Abyssinia*
departed NY 2 June arriving
Queenstown 20 June.



Only cover known bearing all three values of the 1875 One Penny Provisional issue
Ex Tucker, Leuhusen, Pitts

Section: III: Compound Perf
Watermark: Crown and CC

Value: One Shilling; issued May 1894
Perforation: 12 ½x 14 by De la Rue



Printed in March 1880 and perforated by De la Rue (DLR) as evidenced by the full gutter. These are the first stamps of Bermuda not perforated by Somerset House (SH). DLR purchased the SH machines later in 1880 which suggests that they used a Napier comb perf machine on these stamps.

Section: III: Compound Perf
Watermark: Crown and CC

Value: One Shilling
Perforation: 12 ½ x 14 by De la Rue

Varieties

Imperforate between stamp and margin



Ex Tucker

Unique with plate number



A maximum of 20 errors can exist from the two panes on the left hand side of a single sheet.

Examples from the top pane are in blocks or strips, those from the bottom are as single stamps.

Imperforate horizontally
between stamps

A maximum of 24 strips can exist from the single sheet. The error occurs between Rows 7 and 8 and Rows 8 and 9.



From the upper left pane
Columns 1-3

Ex Dale-Lichtenstein, Dickgiesser

Largest recorded multiple

Section: III: Compound Perf
Watermark: Crown and CC

Value: One Shilling - use
Perforation: 12 ½x 14 by De la Rue

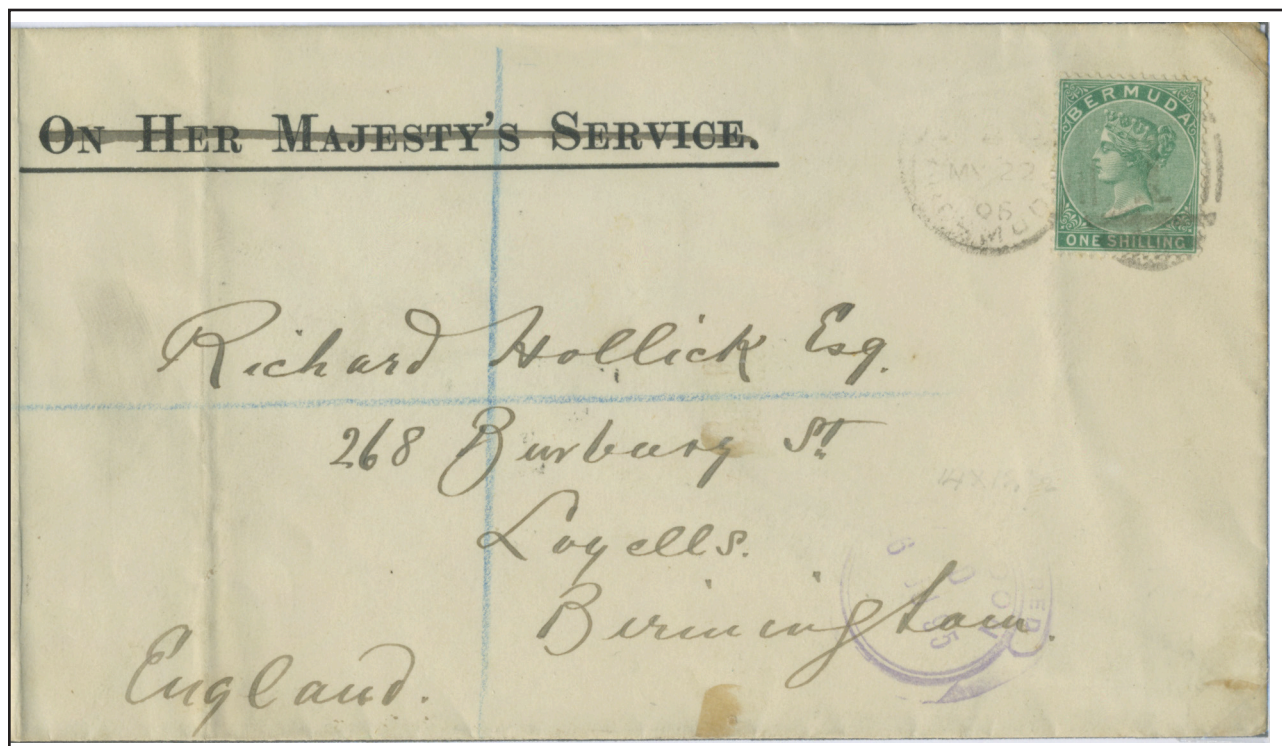
3 Mar 1880
24,000
Green



Three values were printed in 1880 perforated compound of 12½ x 14. With the reduction in postage rates there was so little demand for the six pence and one shilling stamps that the one shilling was released in 1893 and the six pence stamp was not released until 1903.

MY 22 1895
2½d UPU rate to GB
1 Aug 79 to 25 Dec 98
Quadruple rate for up to 2oz
2d Registration Fee

The *Parisian* left Bermuda on
23 May to Liverpool, arriving
London on 8 June



The cover has been folded for ease of display.

Section: III: Compound Perf
Watermark: Crown and CC

Value: Three Pence; issued c. February 1882
Perforation: 12 ½ x 14 by De la Rue

Printing

3 Mar 1880

50,400

Yellow-buff



Plate number 1



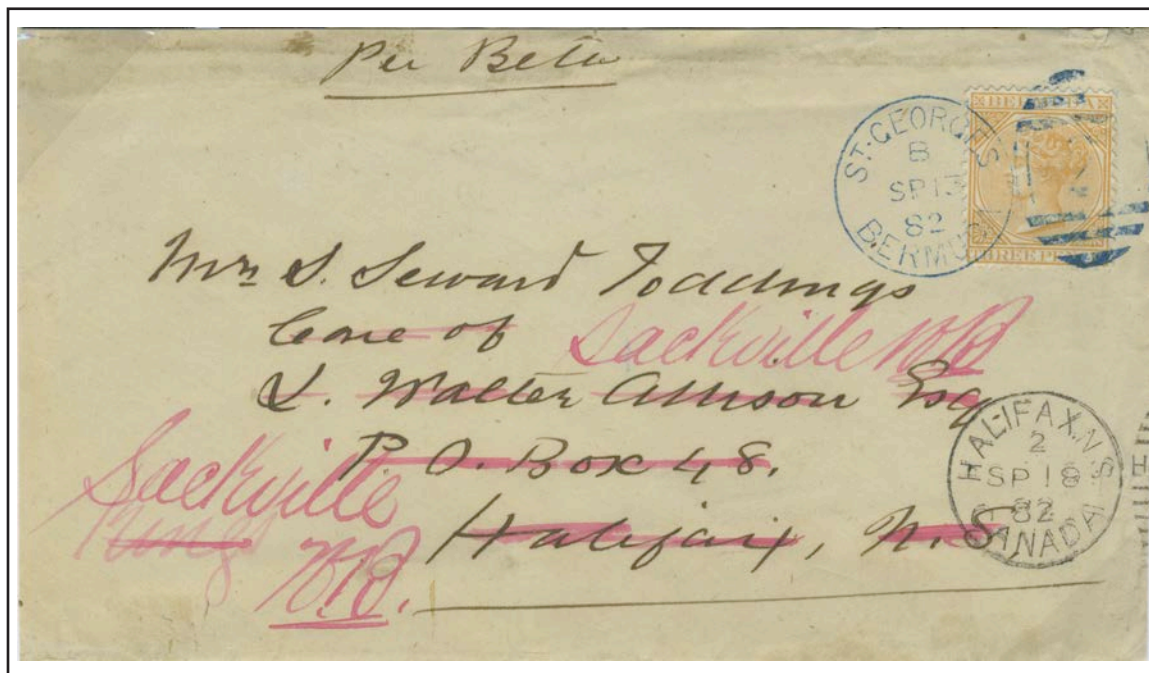
Unlike the six pence and shilling stamps there was a continued need for the three pence value as the rate for mail to British North America was not reduced from 3d until 1886. This value is recorded as circa May 1882 in Ludington, however, the bottom cover on the next page brings this forward by three months.

Section: III: Compound Perf
Watermark: Crown and CC

Value: Three Pence; issued May 1882
Perforation: 12 ½ x 14 by De la Rue

Use

SP 13 1882
3d rate to BNA
1875 - 1879
Single rate



Mail boat *Beta* departed Bermuda on 13 September arriving Halifax on 18th.

FE 16 82
9d rate to
South Africa
Single rate



Earliest recorded use of the 3d compound perforation.
Only recorded Queen Victoria stamped mail to South Africa.

Section: III: Compound Perf
Watermark: Crown and CC

Value: Six Pence; issued Jun 1903
Perforation: 12 ½ x 14 by De la Rue

Due to the abundance of the 6d perforated 14, and due to the reduction in postal rates, the 6d compound perforated stamps which had been received in March 1880 were not released until June 1903.

Plate proof



Bright Mauve
*4 examples
recorded*

Issued stamp



3 Mar 1880
50,640
Bright mauve

Inverted watermark



*Less than 10 mint
examples recorded.*



*Less than 5 used
examples recorded.*

Multiple



Plate number



Current number

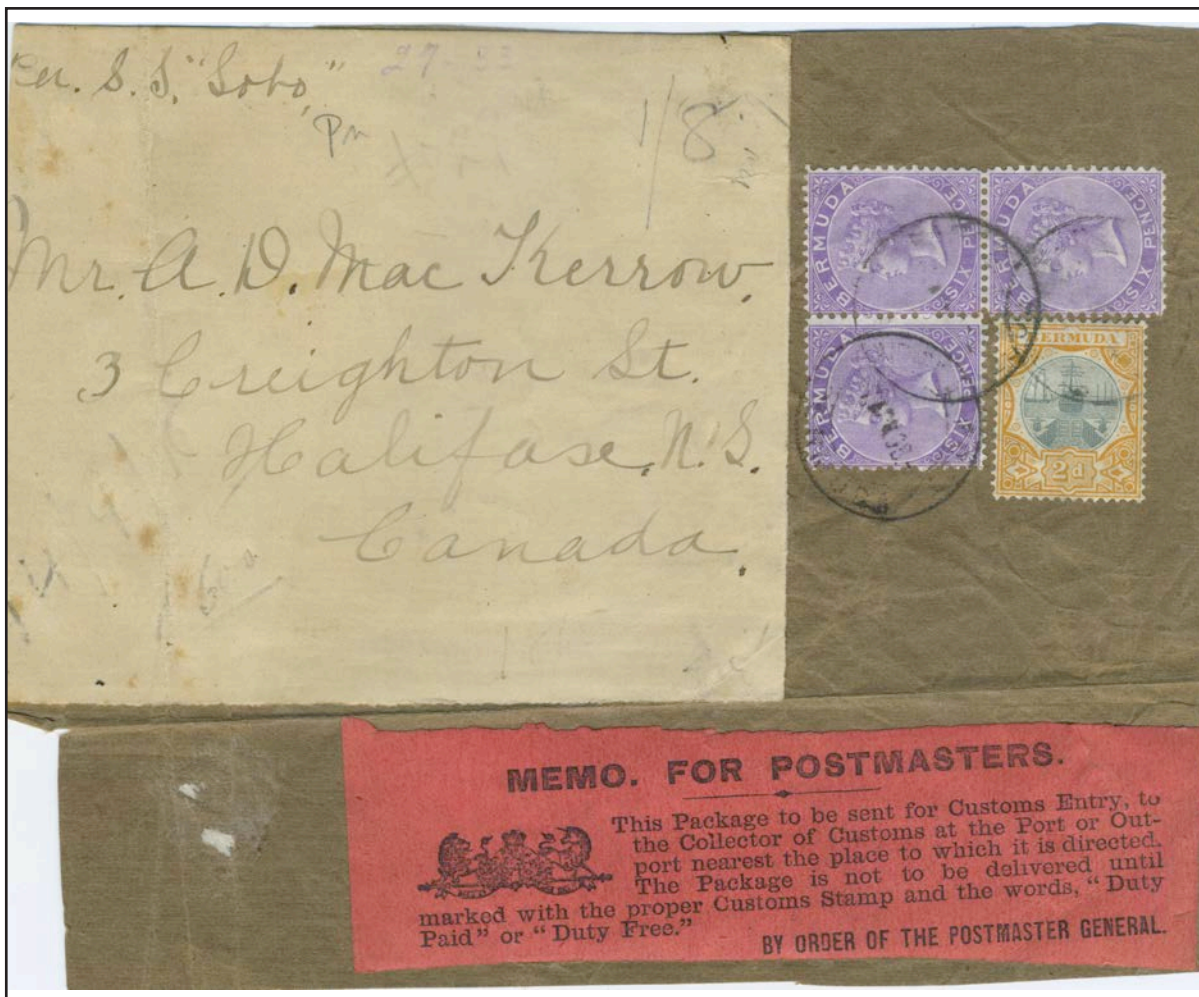
Section: III: Compound Perf
Watermark: Crown and CC

Value: Six Pence
Perforation: 12½ x 14 by De la Rue

Multiple



Use



By 1906 there was very little need for a six pence stamp. The 2d "dock issue" stamp would have paid the registration fee, the parcel rate to Canada was 9d for the first pound and each pound thereafter, therefore this would have been for a 1-2 pound parcel.

Section: IV: New Values 1880

Value: Halfpenny - preproduction

Watermark: Crown and CC

½d stamp.

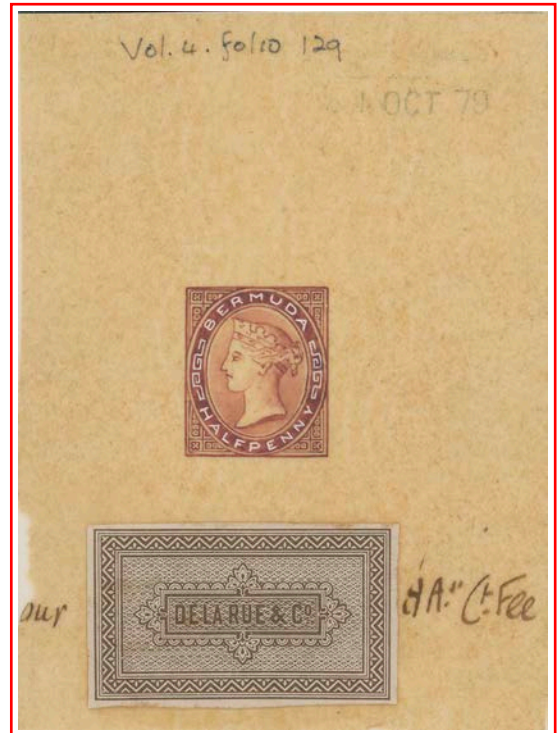
I. The postal convention of 1876 between Bermuda and the United States reduced the rate of a ½oz letter to member countries to 2½d. However, it was not until the reorganization of the Post Office in 1878-79 and the reduction in the rate to UK that Bermuda finally ordered ½d and 4d stamps which were issued on March 25th, 1880. Amazingly Bermuda did not order a 2½d value until 1883!

II. UPU membership required postcards be provided to the public. Bermuda only did so after the reorganization of the Post Office in 1879. A 1½d foreign rate card was released on July 1st 1880 and the local ½d rate card on the 19th.

Essay

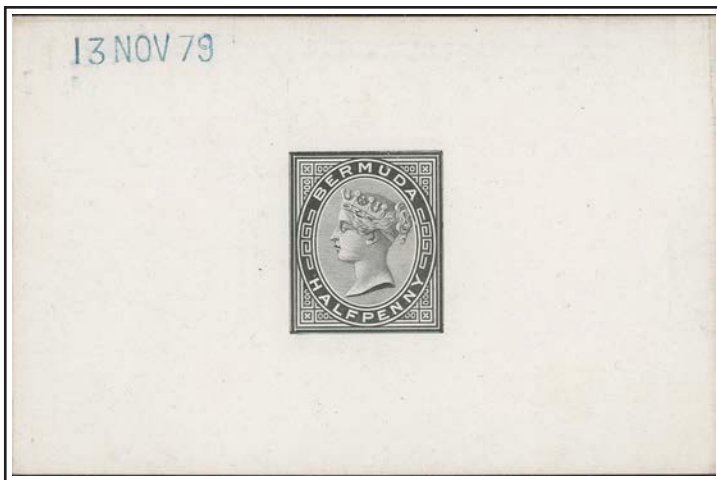


Unaccepted design
Ex: Tucker

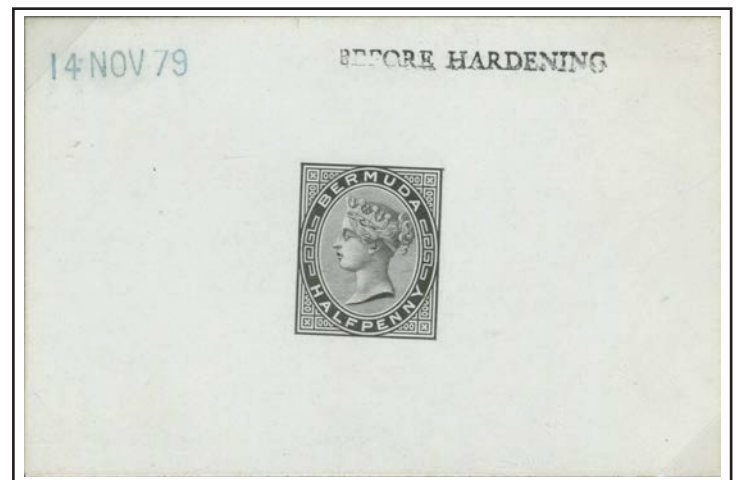


Accepted design
Ex: Ludington

Die Proof



Uncleared surround
Unique



Before Hardening
3 examples recorded

Section: IV: New Values 1880
Watermark: Crown and CC

Value: Halfpenny
Perforation: 14 x 14 by De la Rue

Specimen



Sans-serif 13.5 x 2.0mm
Believed a local overprint
2 examples recorded
Ex Tucker



Sans-serif 13.75 x 2.5mm
Samuel D7 1862-82
Only example recorded



Serifed 15 x 2.5mm
Samuel D8 1863-82
2 examples recorded



One printing
March 25th, 1880
Stone
487,440

The plate number was
incorrectly placed under stamp
57 on the lower left pane.

Varieties

As seen from
the back



Inverted wmk



Retouch on bottom right
stamp in hair above crown.



As seen from
the back

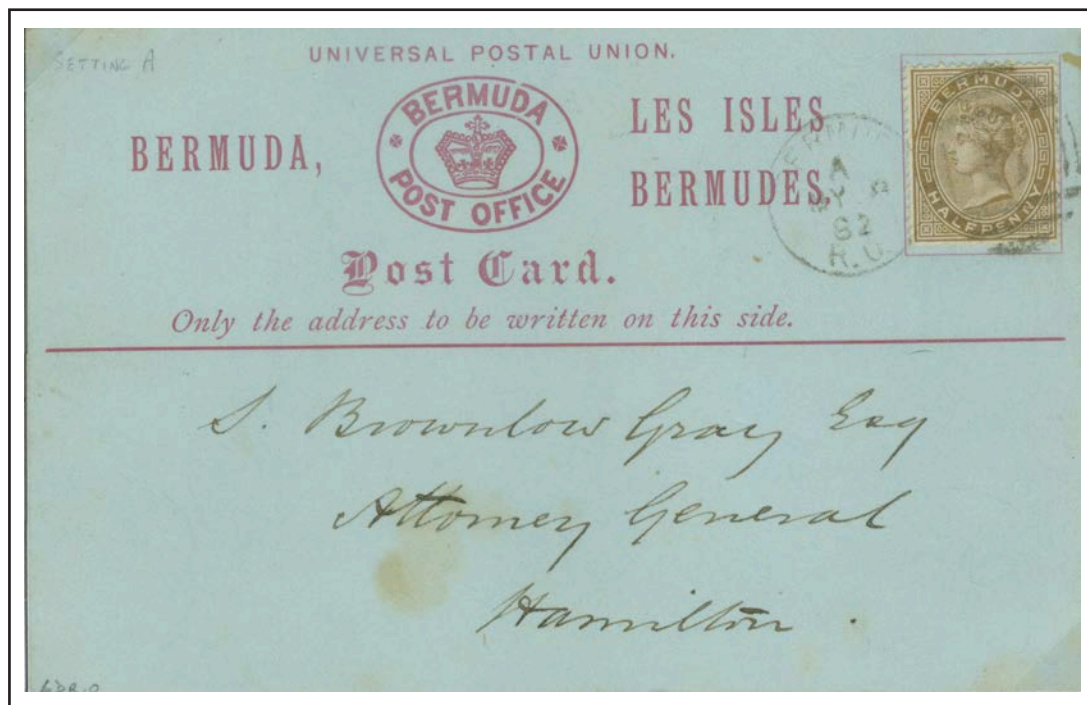


Inverted wmk

Section: IV: New Values 1880
Watermark: Crown and CC

Value: Halfpenny - use
Perforation: 14 x 14 by De la Rue

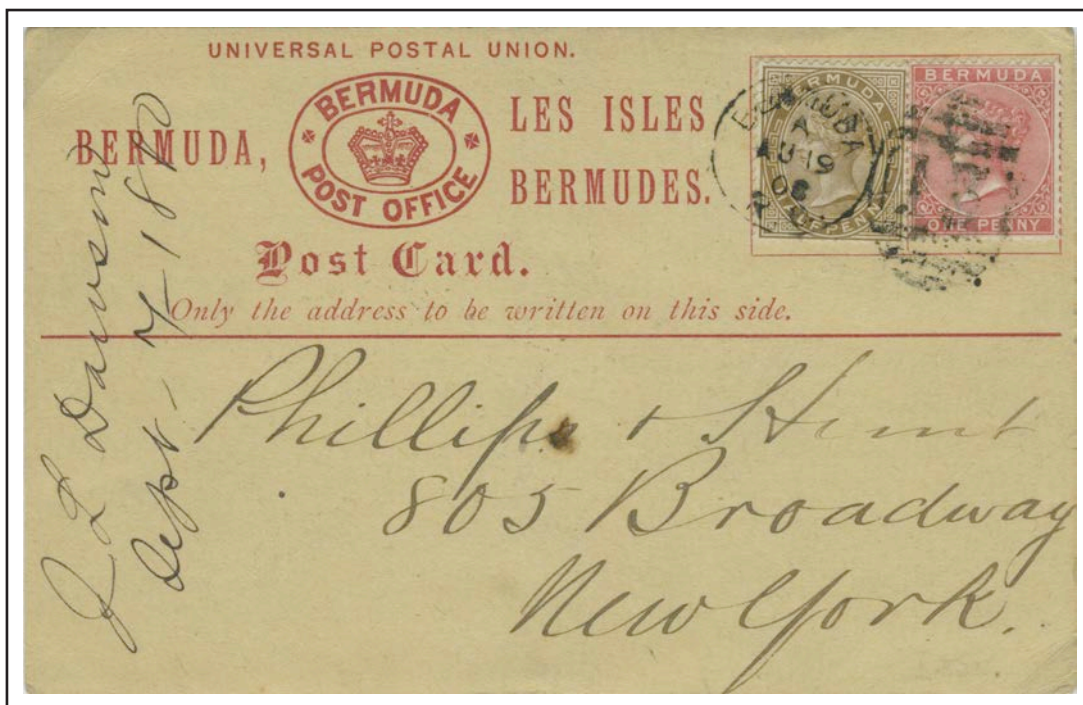
The ½d was used for the formula postal stationery cards; ½d for local and 1½d for overseas rates.



JY 8 82
½d local postcard rate
1 Jan 80 to 1952
Single rate

Duplex cancel with
#6 from Paget West.

AU 19 80
1½d postcard rate
1 Jan 80 to 1952
Single rate

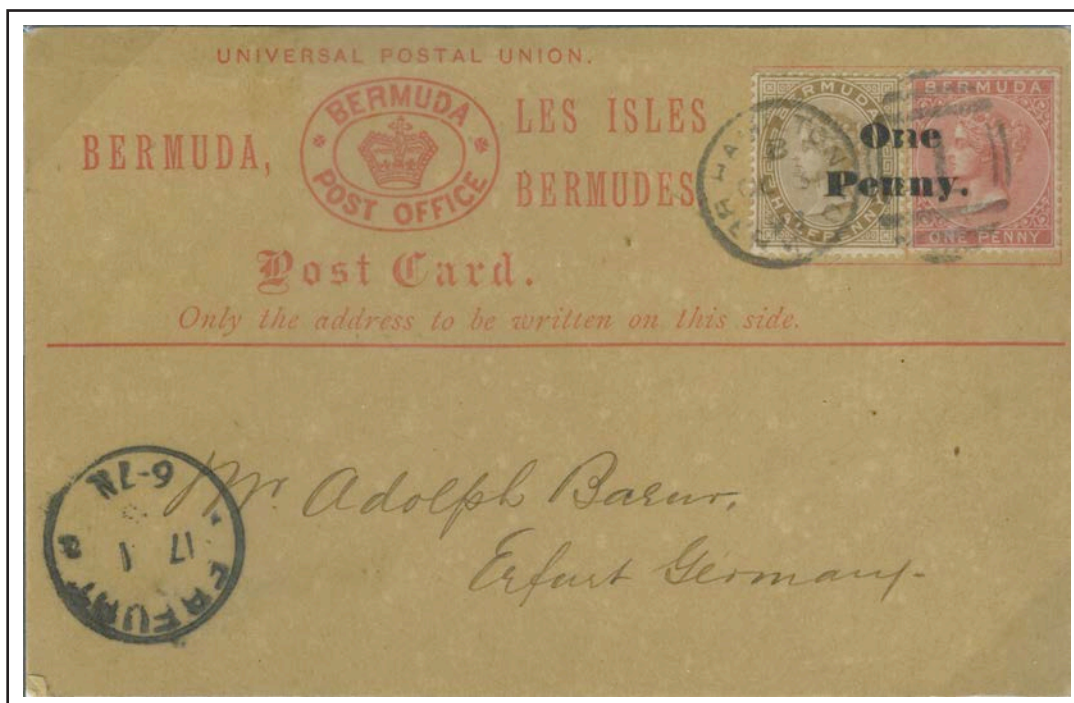


Duplex cancel
with #13 from
Crawl.

Section: IV: New Values 1880
Watermark: Crown and CC

Value: Halfpenny - use
Perforation: 14 x 14 by De la Rue

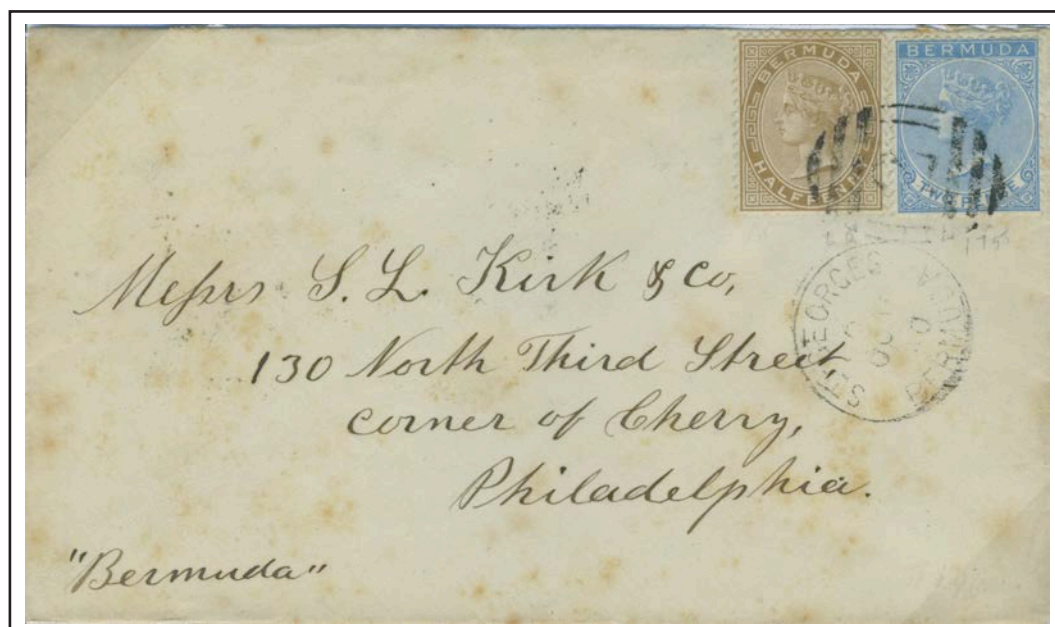
Complying with UPU regulations, in 1893 the postcard rate was reduced to 1d.



OC 31 93
1d UPU postcard rate
1 Jul 93 to 1939
Single rate

87 of the formula cards were overprinted ONE PENNY, of which less than 12 are known used.

OC 15 80
2½d UPU rate to USA
1 Aug 79 to 1922
Single rate



Carried on the Bermuda dated 'OC 15 80' to New York with datestamp 'OCT 19' and arrived in Philadelphia on the same day.

Section: IV: New Values 1880
Watermark: Crown and CC

Value: Four penny
Perforation: 14 x 14 by De la Rue

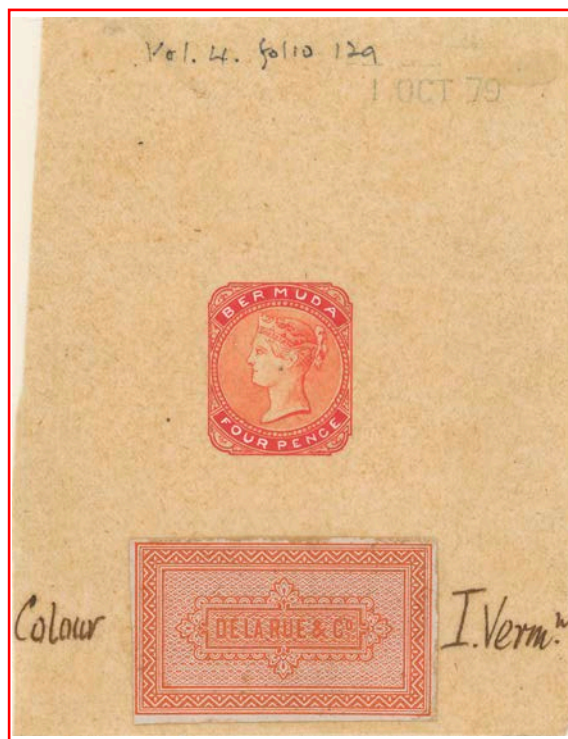
4d stamp.

The 1865 rate of 1s was for mail to the United Kingdom, until 1872 this was sent via Halifax or St. Thomas. The 1s rate remained until 1877 for mail via St. Thomas. In 1872 the direct and via Halifax rates were reduced to 6d which lasted until 1879 then the rate was further reduced to 4d which lasted until 1890 when the 2½d rate came into effect.

Essay



Unaccepted
design
Ex: Tucker

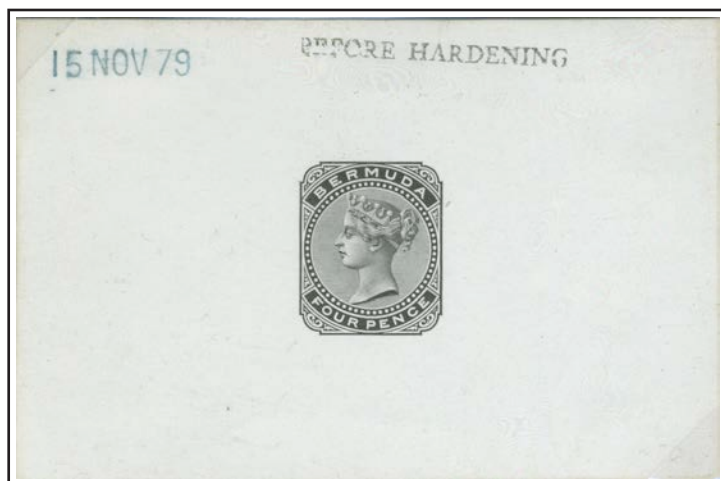


Accepted design
Ex: Ludington



Unaccepted
design
Ex: Tucker

Die Proof



Before Hardening
5 examples recorded



After Hardening
3 examples recorded
Ex Tucker

It was not until the reorganization of the Post Office in 1878-79 and the reduction in the rate to UK that Bermuda finally ordered ½d and 4d stamps, which were issued on March 25th, 1880.

Section: IV: New Values 1880
Watermark: Crown and CC

Value: Four Pence
Perforation: 14 x 14 by De la Rue

Specimen



Sans-serif 13.5 x 2.0mm
 Believed a local overprint.

2 examples recorded
Ex Tucker



Sans-serif 14.75 x 1.75mm

Samuel D4 1862-82

Only recorded example



Serifed 15.0 x 2.5mm

Samuel D8 1863-82

2 examples recorded

One printing
 March 25th, 1880
 Orange brown
Multiple 486,480



Use

MY 7 85
 4d UPU letter
 1 Aug 79 to 31 Mar 77
 Single rate

Inverted Watermark



As seen from
 the back



Inverted wmk

2 examples recorded

Mangrove Bay duplex with number 4 in barred oval. 99% of covers from Bermuda were to USA, Canada or United Kingdom.

Only a couple of examples are known to Italy.



*Proposed colours,
being those established
by the International
Postal Convention
for these two duties.*



Proposed colour

V: Queen Victoria: 1883, Crown CA

The watermark was changed from CC for Crown Colonies to CA to reflect the new Crown Agents.

APPENDIX SHEET

Appendix Sheets were produced with a number of the colour trials and submitted for approval of the colour for the various values. This sheet bears current stamps, or imperforate color trials, in the left column trials in the proposed new colours, perforated 12, unlike the issued stamps, which were perforated 14

Ex Tucker



*^d
2½ Proposed colour, being
that established by the
International Postal Con-
ventions for this duty.*



Proposed colours.



Section: V: New Watermark 1883 - 1903
Watermark: Crown and CA (Crown Agency)

Colour trials
Perforation: 12 x 12 by De la Rue

These colour trials were produced in preparation for the change in colours to those used by the UPU. The 2d stamp in blue being that proposed for the new 2½d stamp that was issued in 1884. Due to excess 6d stamps this value was never produced with the new Crown and CA watermark.



Ex: Tucker



Ex: Tucker

Ex: Ulrich and Dickgiesser

Six sets were made, one of which is on the appendix sheet on the previous page and another set on a half page from another appendix sheet. Only two complete sets are otherwise recorded and the sets appear to have been separated. This set was recombined by Ulrich, and as shown included two stamps that were in the Tucker collection.

Section: V: New Watermark 1883 - 1903
Watermark: Crown and CA

Value: Halfpenny

Perforation: 14 x 14 by De la Rue

Pre-production



Die 2, Before Striking

Only example recorded

Specimen

Positions 40-42, the middle stamp has a broken leg of the M which is known to be position 41



Sans-serif 14.5 x 2.5mm

Samuel D12 1884 (July) - 1922

276 supplied in strips of three for UPU

Printings



26 Nov 1891

120,000

Dull green



11 Oct 1895

120,000

Dull green



7 Jun 1897

121,440

Deep grey-green



18 Apr 1899

360,000

Deep grey-green

Multiples



The sheet was divided into four panes of 60, the plate numbers are above Stamp 5 on the upper right and below Stamp 56 on the lower left pane.

The Specimen overprint was set in a forme of 60 impressions (6 x 10) as per each pane of stamps, and used on small format stamps.

Section: V: New Watermark 1883 - 1903
 Watermark: Crown and CA

Value: Halfpenny - use
 Perforation: 14 x 14 by De la Rue



JY 20 1896
 2½d rate to BWI
 1875 - 1879
 2d registration fee

Pickford and Black Alpha left Halifax on about 16 July, arriving and departing Bermuda the same day (20 July) for Turks Islands and Jamaica, arriving Jamaica on the 26th.

SE 18 1899
 ½d newspaper rate
 1898 - 1933



Local newspapers were carried free until 1901 when the rate of ¼d was introduced. The rate for foreign papers was 1d per paper from 1865 to 1879, then 1d per 4oz until the rate was changed as above.

Section: V: New Watermark 1883 - 1903
Watermark: Crown and CA

Value: One Penny - dull rose
Perforation: 14 x 14 by De la Rue



26 Dec 1882
488,400
Dull rose

Dull Rose from lower left pane, positions 19-24, 25-30, 31-36.



Positions 19, 20, 25, 27, 29, 32 and 33 have flaws.

Largest recorded multiple of dull rose.

Ex Tucker

Varieties



Lower Left pane, Position 29;
Stop between O and N.



Lower right pane, Position 50;
Dash in arms of Y.

Section: V: New Watermark 1883 - 1903

Watermark: Crown and CA

Value: One Penny - use

Perforation: 14 x 14 by De la Rue

Illustrated mail

DE 29 83
1d local rate
1842 - 1939

Hand-decorated envelope from HMS Northampton flagship of C-in-C Vice Admiral Sir John Commerell addressed to his daughter.

Ex Ludington

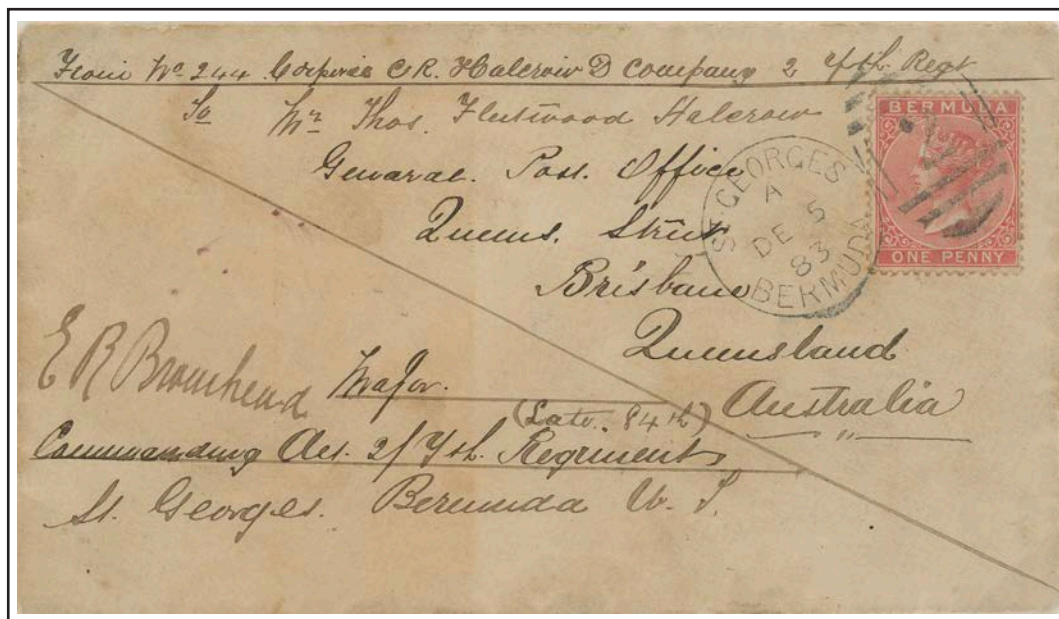


The blue cancel on the illustration represents the cancel for Hamilton that was changed back to black on 1 January 1884.

Note: cancel incorrectly reads "INLAND ISLAND" and was corrected to "IRELAND ISLAND" when the duplex cancel was changed in 1888.

Soldiers letter addressed to Australia

DE 5 83
1d concessionary
rate 1875 - 1921



Only recorded soldiers' letter of this period addressed to Australia

1883 envelope bearing a 1d rose-red issue paying the soldiers' privilege letter rate to Brisbane, Australia, being tied by the St. George's Bermuda "2" duplex dated 'DE 5 83' with on reverse an arrival datestamp for 'FE 18 84'.

The envelope was sent by Corporal C. R. Halerow, of D company, 2nd Battalion of the York and Lancaster Regiment stationed at St. Georges and had been countersigned by the commanding officer, Major E. R. Bromhead. This envelope travelled in a closed bag via the United Kingdom to Queensland.

Section: V: New Watermark 1883 - 1903
Watermark: Crown and CA

Value: One Penny - carmine-rose
Perforation: 14 x 14 by De la Rue

Sans-serif 14.5 x 2.5mm
Samuel D12 1884 (July) - 1922

*Printers file copy
Only recorded example*



20 Jan 1886
243,840
Carmine-rose



Carmine-rose from upper right pane, positions 43-48, 49-54, 55-60.

Positions 50, 51, 52, 56, and 59 have flaws

Largest recorded multiple of carmine-rose.

Ex T.W Hall and Hicks

JU 13 1887
1d local rate
1842 - 1939
Single rate



Cover sent from St. David's to Hamilton, originally allocated to Devonshire Dock; it was moved to St. David's after 1 October 1886. *Only cover recorded with this cancel.*

Section: V: New Watermark 1883 - 1903
Watermark: Crown and CA

Value: One Penny - aniline-carmine
Perforation: 14 x 14 by De la Rue

After the 1887 printing all printings are aniline-carmine. From dated copies the shades appear to get darker for later printings.

Shades



Eight printings between August 1889 and January 1901 with each printing just under 500,000 stamps for a total of 3.78 million.

Inverted watermark



Carmine-red



As seen from
the back



Aniline-carmin

Aniline-carmin from lower left pane. Positions 26 – 30, 32 – 36, 38 – 42, 44 – 48.

Perforation: 14 x 14 by De la Rue
Value: One Penny - multiples

Positions 27, 29, 32, 33,
38, 39, 40, 42, 44, 46,
47 have flaws.



Other than the early printings there is very little variation in shades and, at present, it is not possible to separate the aniline printings.

Section: V: New Watermark 1883 - 1903
Watermark: Crown and CA

Value: One Penny
Perforation: 14 x 14 by De la Rue

Varieties

Lower Left pane, Position 49;
 inverted Q for O flaw.



Position 49-50, 55-56. Minor
 flaws also exist on 55 and 56.



LL 53-54, 59-60
 53 damage to frame.



LR 49-50, 55-56
 50 dash in arms of "Y"

JA 11 1899
 1d Empire rate
 1898
 Single rate



Pickford and Black *Erna* left
 Halifax on 7 Jan, arriving
 and departing Bermuda the
 same day (12 Jan) for Turks
 Islands and Jamaica which
 usually took about 6 days.

Q for O flaw, *one of three recorded examples on cover.*
 Back flap is embossed in blue "H. M. S. Talbot".

The one penny plates were used for the entire 35-year period of Queen Victoria stamps in Bermuda and started / developed many minor flaws. Better-known examples are shown on this page.

Section: V: New Watermark 1883 - 1903

Watermark: Crown and CA

Value: Two Pence

Perforation: 14 x 14 by De la Rue

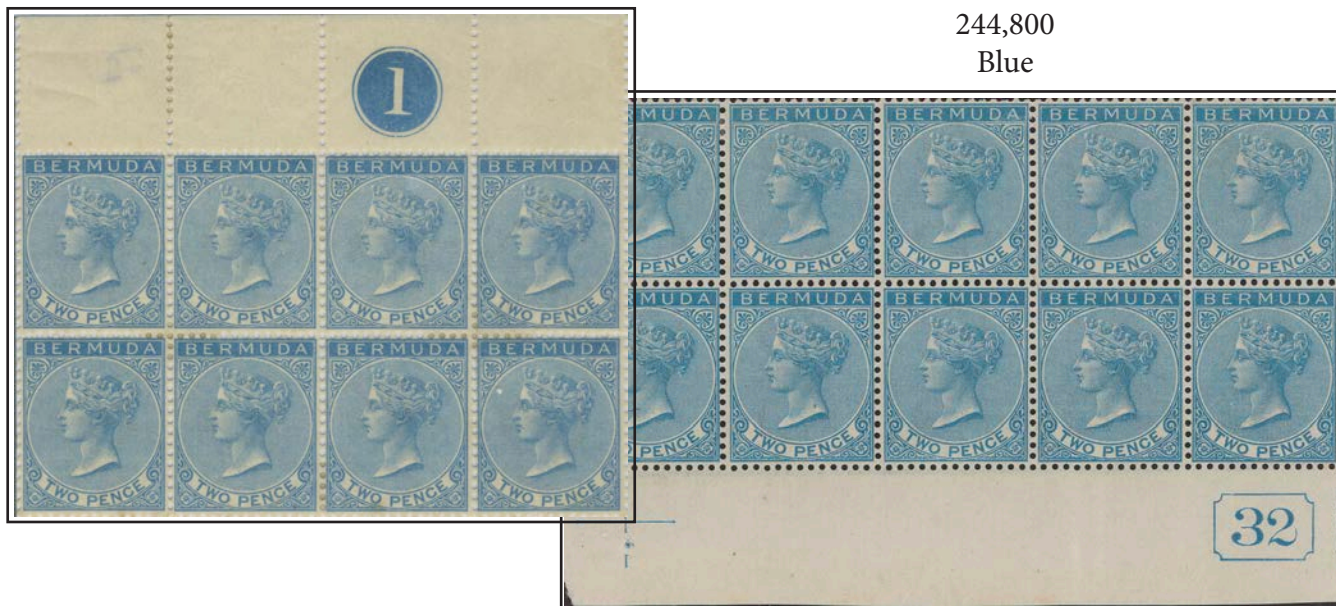
Printings

The first printing with the CA watermark retained the original blue colour, but this had to be changed when the UPU introduced a standard colour code in which blue was used for the 2½d value.

28 Dec 1882

244,800

Blue



Current number 32

Ex Hicks

Use



AP 24 89

2d rate to GB via NY

1 Jan 80 to 31 Mar 77

Concessionary rate

SS Orinoco
sailed for New
York on 25th

Soldier letter at 2d rate as sent via New York, 1d fee to USA

Only three covers recorded at this concessionary rate

Section: V: New Watermark 1883 - 1903
Watermark: Crown and CA

Value: Two Pence
Perforation: 14 x 14 by De la Rue

Specimen



Sans-serif 14.5 x 2.5mm
 Samuel D12 1884 (July) - 1922
Printers file copy



Aniline purple
 Sans-serif 14.5 x 2.5mm
 (Samuel D12)
750 examples for UPU



Brown purple
 Sans-serif 14.5 x 2.5mm
 (Samuel D12)
Less than 6 specimens

Printings



22 Jun 1893
 72,000
 Aniline-purple



26 May 1897
 120,960
 Brown-purple

Multiples



Brown-purple



Aniline-purple

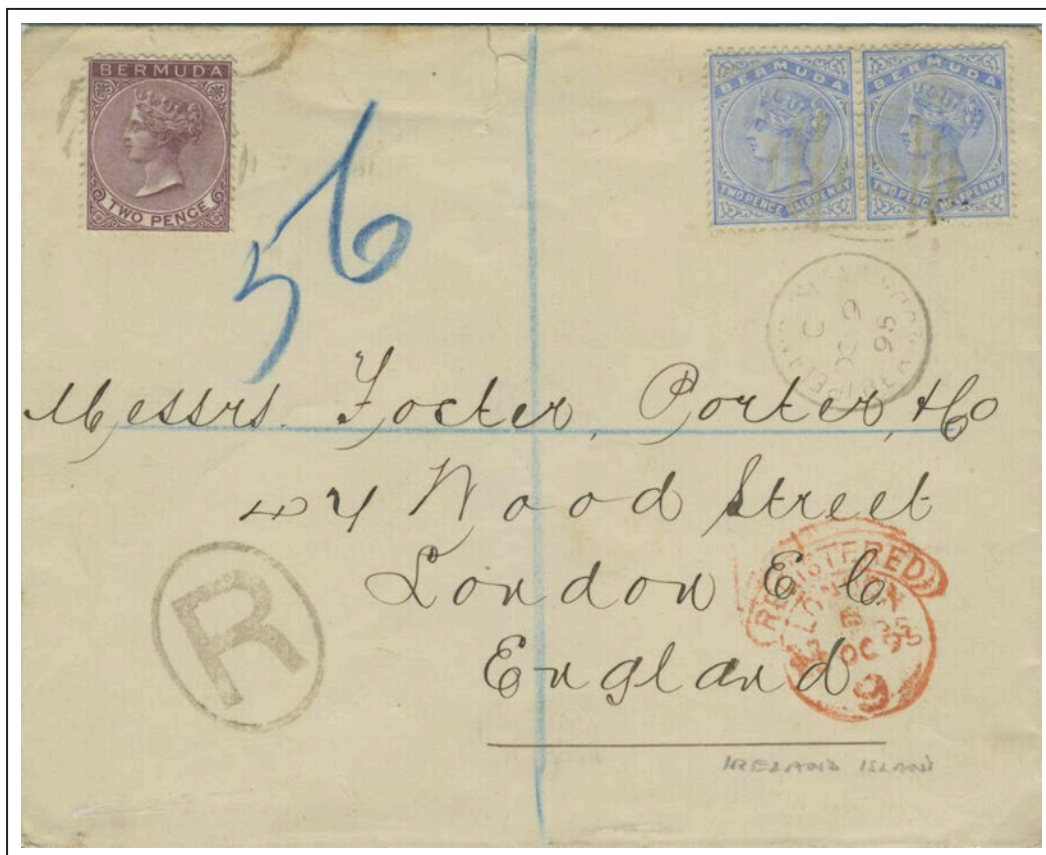


Brown-purple
 Current number 32

Between 1884 and 1893 the number of specimens required for the UPU increased from the 276 produced for the ½d, to the 750 stamps that were overprinted specimen for distribution to the UPU for the 2d and 1s stamps.

Section: V: New Watermark 1883 - 1903
 Watermark: Crown and CA

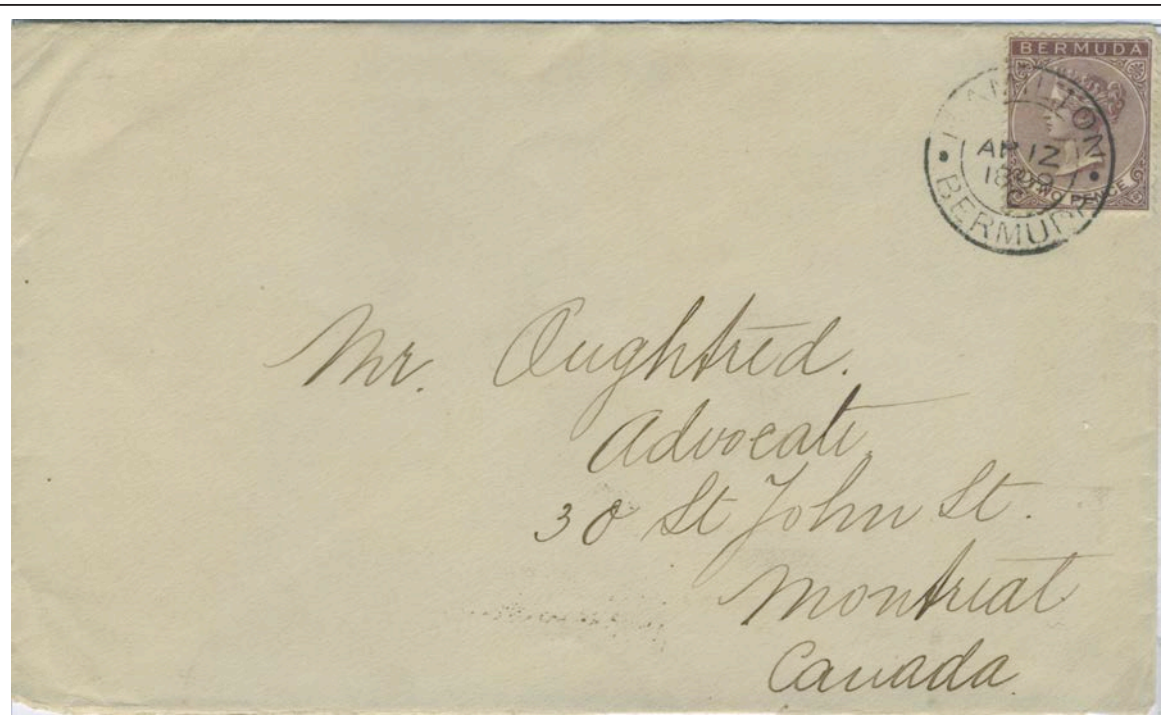
Value: Two Pence - use
 Perforation: 14 x 14 by De la Rue



OC 9 1895
 2½d UPU rate
 1 Aug 79 to 1 Mar 89
 single rate plus late fee
 2d registration fee

Aniline-purple paying 2d registration fee, 2½d rate to UK plus 2½d late fee (note C code on datestamp for evening collection). A fee equal to the postage was charged to allow the late letter to be delivered to the ship that had already left the dock.

AP 12 1899
 1d Empire rate
 from 29 Dec 98
 Double rate



2d Brown-purple paying double rate to Canada

On 25 December 1898 Bermuda joined the Empire Penny Post scheme by which 1d would pay for delivery to most of the British Empire.

Watermark: Crown and CA

Value: Two Pence halfpenny

17 Bermuda.C. S. 486.

*Mr Blake
7/70
S. M. W. & Co. for
estimate & design
E.B.*

Colonial Secretary's Office,
Bermuda 3 July 1883.

Gentlemen,



I have the honour to request that you will be good enough to order to be engraved for the service of this Colony a die for a postage stamp value two pence half penny, the value to be impressed at the foot of the stamp thus "2½^d," and the pattern to be the same as the existing three-penny stamp, example in the margin.

2½^d.

It is decided that the colour shall be "red brown", but I am directed to delay sending any requisition for a supply of the new stamp until the stock of three-penny stamps has been exhausted.

I have the honour to be,
Gentlemen,

Your obedient servant
B. Cavendish Boyle.
Col. Sec.

Letter from the Colonial Secretary's Office Bermuda to the Crown Agents requesting the to prepare a die for the 2½d value. Ex: Ludington

The Crown Agents for the Colonies,
Downing Street,
S. W.

Section: V: New Watermark 1883 - 1903
Watermark: Crown and CA

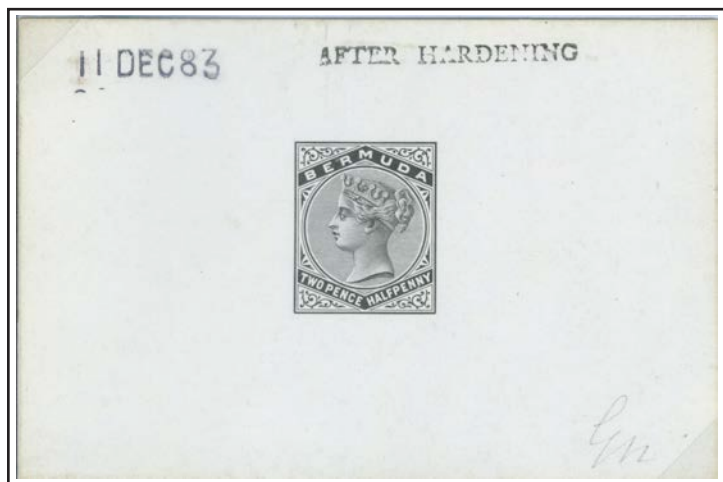
Value: Two Pence Halfpenny
- preproduction



Essay dated July 25th 83 in response to the letter requesting a design for this new value
Ex: Ludington



Die I dated 10 DEC 83 (likely Before Hardening)
Only recorded example



Die I AFTER HARDENING dated 11 Dec 83.
5 examples recorded.



Die I Unmarked die proof (after striking?) with a break in the right frame which might be the reason to produce the second.
Only recorded example
Ex Tucker

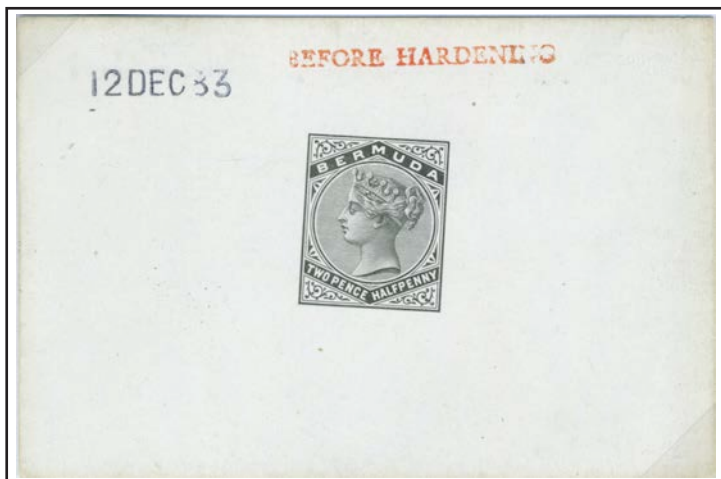
Section: V: New Watermark 1883 - 1903
Watermark: Crown and CA

Value: Two Pence Halfpenny

2½d stamp.

This value was needed to pay the rate to the USA from 1880 and from 1894 the UPU rate was also reduced to this rate which remained in effect until 1922.

Preproduction



New die “BEFORE HARDENING” dated 12 Dec 83.

11 examples recorded.

New die “AFTER HARDENING” dated 12 Dec.

De la Rue neither charged Bermuda nor the Crown Agents for producing the new die.

Specimen

This value was not prepared for UPU distribution.



Sans-serif 14.5 x 2.5mm (Samuel D12)

Less than 6 examples recorded.



Prepared for presentation

Only example recorded.

Sans-serif 14.5 x 2.5mm
 Samuel D12 1884 (July) - 1922

Inverted watermark

Printers' file copy
Only recorded example



As seen from
 the back



As seen from
 the back

Section: V: New Watermark 1883 - 1903
Watermark: Crown and CA

Perforation: 14 x 14 by De la Rue



5 Nov 1884
243,360
Deep ultramarine
shade



20 Jan 1886
122,400
Deep ultramarine
shade



23 Nov 1887
243,600
Deep ultramarine
shade



26 Nov 1891
612,720
Pale ultramarine
shade



1 Mar 1895
975,360
Pale ultramarine
shade



9 Feb 1899
480,000
Pale ultramarine
shade

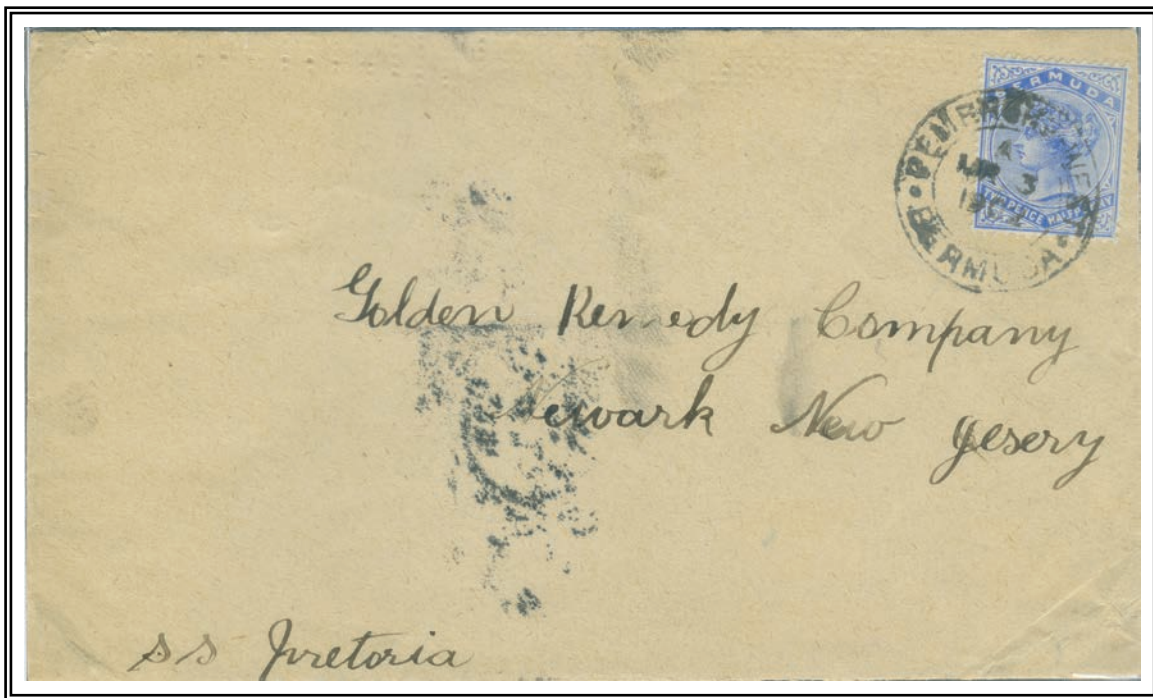


Deep ultramarine plate block

Section: V: New Watermark 1883 - 1903
 Watermark: Crown and CA

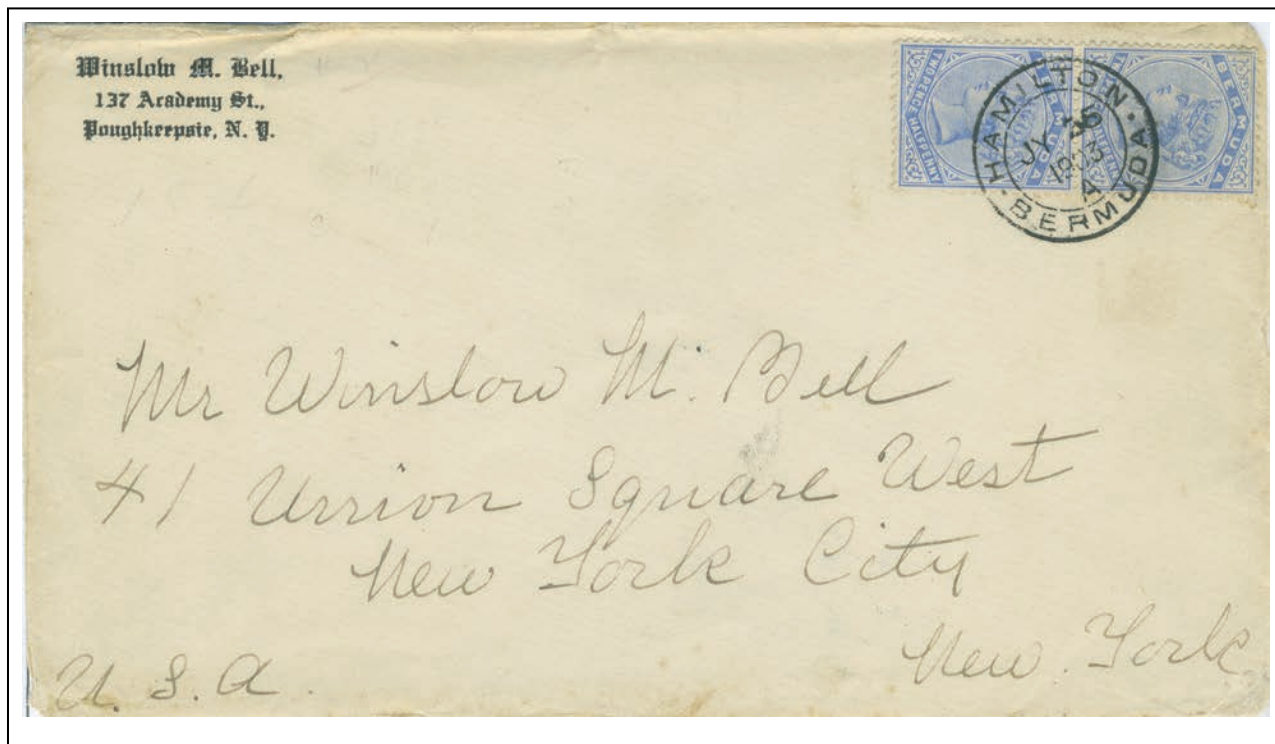
Value: Two Pence Halfpenny Postmarks
 Perforation: 14 x 14 by De la Rue

MR 3 1902
 2½d UPU rate
 1 Jan 84 to 1922
 Single rate



Carried on the
 Pretoria departing
 Bermuda on 3
 March arriving
 New York on 5th

One of two recorded covers with the Pembroke West type cancellation



JY 26 1903
 2½d UPU rate
 1 Jan 68 to 31 Mar 77
 Double rate

Carried on the
 Pretoria departing
 Bermuda on 25 July
 arriving New York on
 27th July

Section: V: New Watermark 1883 - 1903
Watermark: Crown and CA

Value: Three Pence
Perforation: 14 x 14 by De la Rue

Specimen



Sans-serif 14.5 x 2.5mm
Samuel D12
Less than 6 known



Sans-serif 14.5 x 2.5mm
Samuel D12 1884 (July) - 1922
Printers' file copy
Only recorded example



Presentation
only recorded example

Printings



20 Jan 1886
48,480
Bluish grey



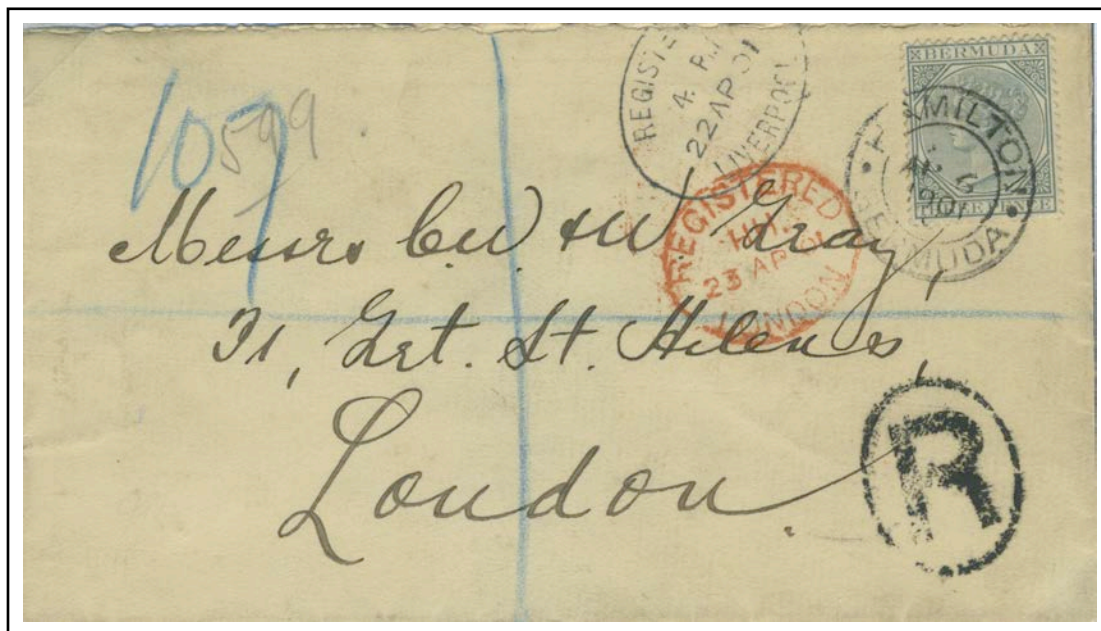
22 Jun 1893
48,000
Grey



10 Nov 1897
24,480
Pale grey

Use

AP 4 1901
1d Empire rate
25 Dec 98 to 1926
Single rate plus 2d
registration fee



1d rate plus 2d registration fee

Section: V: New Watermark 1883 - 1903
Watermark: Crown and CA

Value: Four Pence
Perforation: 14 x 14 by De la Rue

While the stamp was despatched to Bermuda in November 1897 it was not released until January 1904

Printing



10 Nov 1897
 24,480
 Orange-brown

Watermark reversed



Reversed wmk

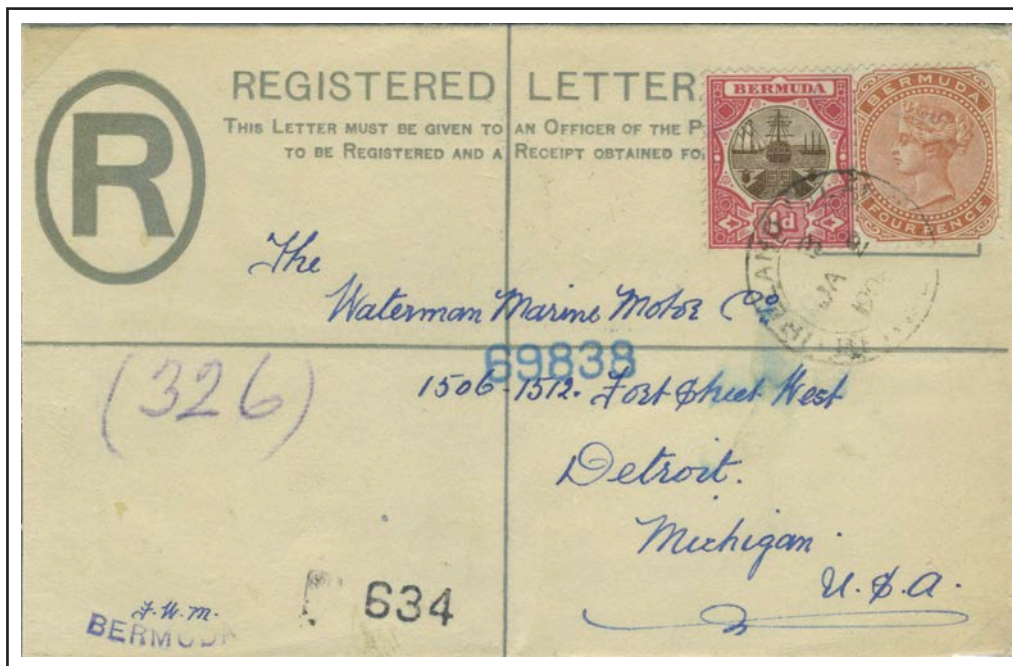


As seen from
 the back



Reversed wmk

Use

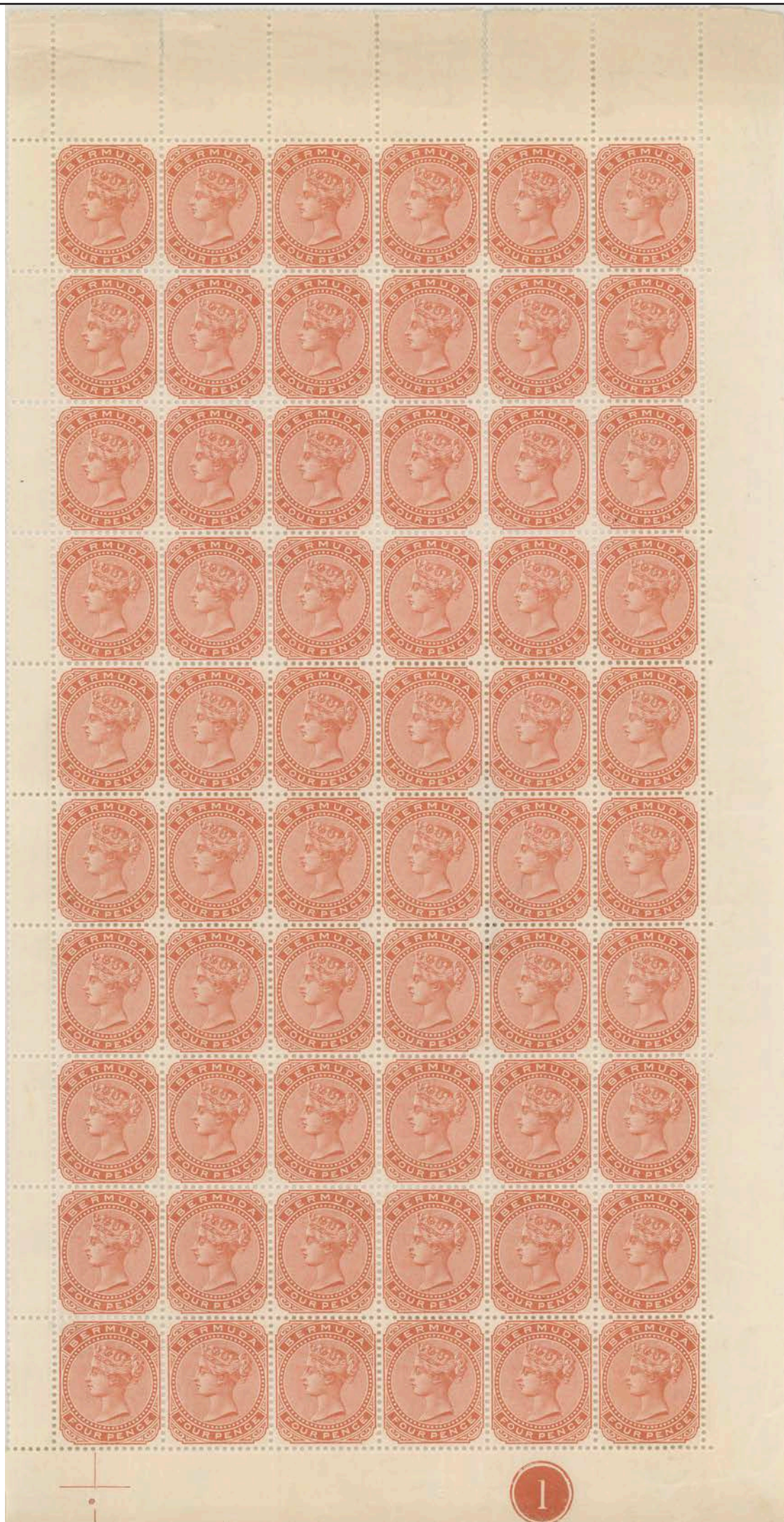


'JA 2 1908'
 2½d UPU rate
 1 Aug 79 to 1926
 Double rate

Double rate to USA, 2d Dock issue registration envelope.

These 4d stamps were printed in 1897, however there was no need for this rate. 2 sheets were finally issued to the Colonial Postmaster on January 18th, 1904

Only recorded
complete pane of
60 stamps from
the lower right
corner of the
sheet.



Section: V: New Watermark 1883 - 1903
Watermark: Crown and CA

Value: One Shilling
Perforation: 14 x 14 by De la Rue

Specimen



Sans-serif 14.5 x 2.5mm
Samuel D12 1884 (July) - 1922
Printers' file copy
Only recorded example



Sans-serif 14.5 x 2.5mm
(Samuel D12)
750 examples for UPU



Pos 41
break to left
leg of M

Printings



20 Jan 1886
48,480
Olive-brown



22 Jun 1893
48,000
Yellow(ish) brown



10 Nov 1897
24,480
Yellow-brown

Watermark reversed



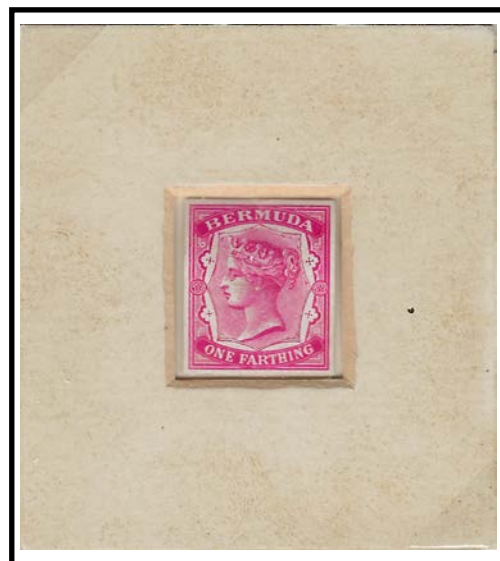
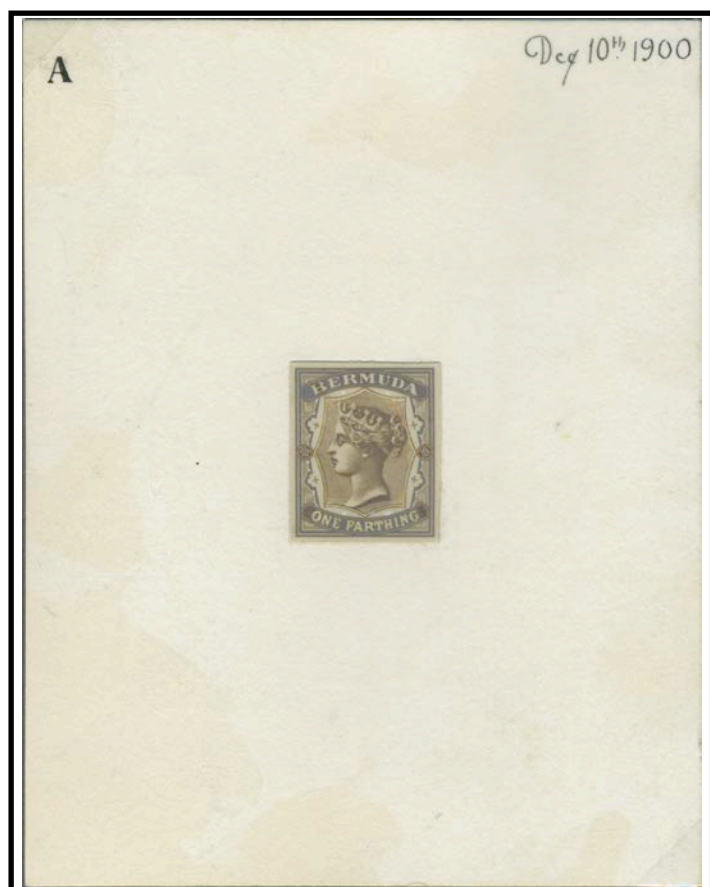
As seen from
the back



less than 10 mint and 10 used copies recorded

Section: VI: New Watermark 1883 - 1903
Watermark: Crown and CA (Crown Agents)

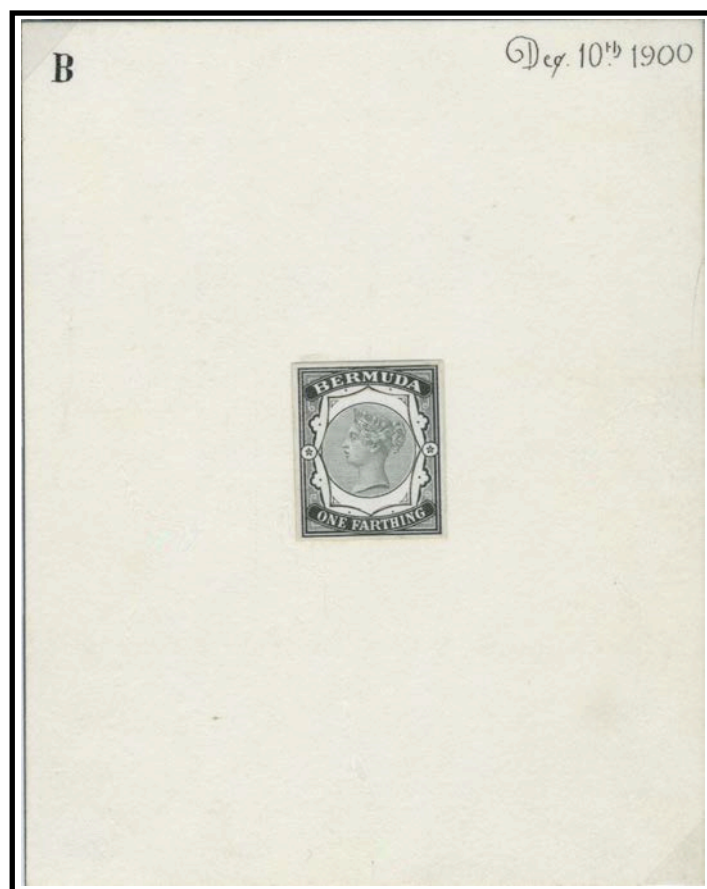
Value: One Farthing on One Shilling
Essays



Ex: Ludington

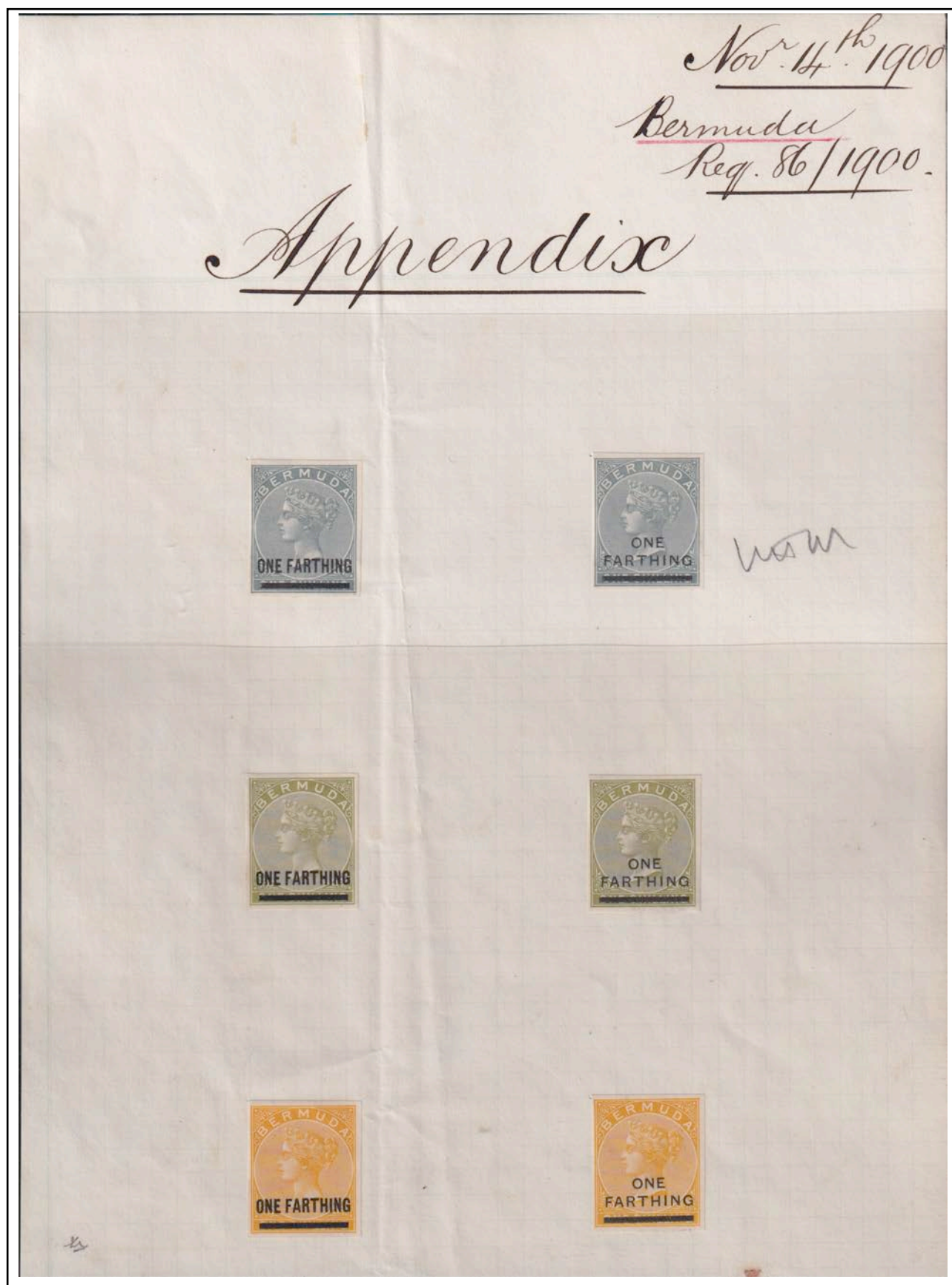


Ex: Ludington



Ex: Tucker

The four essays for the one farthing stamp; none of which was approved. The version in rose has been reduced, The two lower essays are both stamped "B" and dated Dec 10th 1900, one in grey and one in black. It is unknown why De la Rue would have numbered these versions the same.



Appendix sheet showing the three colours and for the two types of overprint. The top right being the accepted version. Ex Tucker

Section: VI: New Watermark 1883 - 1903
 Watermark: Crown and CA (Crown Agents)

Value: One Farthing on One Shilling

¼d stamp.

This value was needed to pay the rate for local newspapers. It should be noted that the ONE FARTHING was part of the printing process and not a true overprint.

Plate proof, Surcharge Essay



Olive-green
Ex Ludington



Grey



Yellow
Ex Ludington

Plate proof



Olive-green



Grey



Yellow
Ex: Tucker

The three colour trials at the top are essays for the surcharge. This format of bold sans serif type was unacceptable. The examples on the second row are plate proofs of the accepted design showing different colour options. *These proofs would have been printed in strips of six, however these and the examples on the appendix sheet are the only examples now recorded.*

Specimen

Perforation: 14 x 14 by De la Rue



Sans-serif 14.5 x 2.5mm
(Samuel D12)



Strip of 4 which can be plated to Positions 38-41 on the pane from the break in the left leg of the 'M' on the last stamp.
 750 specimens were provided to the UPU in strips of 5.

Printings



10 Jan 1901
48,480
Dull grey



18 Mar 1901
486,000
Bluish grey



Sep 1901
488,880
Bluish grey

Section: VI: New Watermark 1883 - 1903
 Watermark: Crown and CA (Crown Agents)

Value: One Farthing on One Shilling
 Perforation: 14 x 14 by De la Rue

Varieties



Printed on gummed side.
Only example recorded to date



e



Broken F
Two recorded



Inserted "F"
Eight recorded



e

Broken G
 Stamp 18, row 3,
 column 6



NO 7 1901
 1d empire rate
 1 Jan 98 to 1934
 Single rate



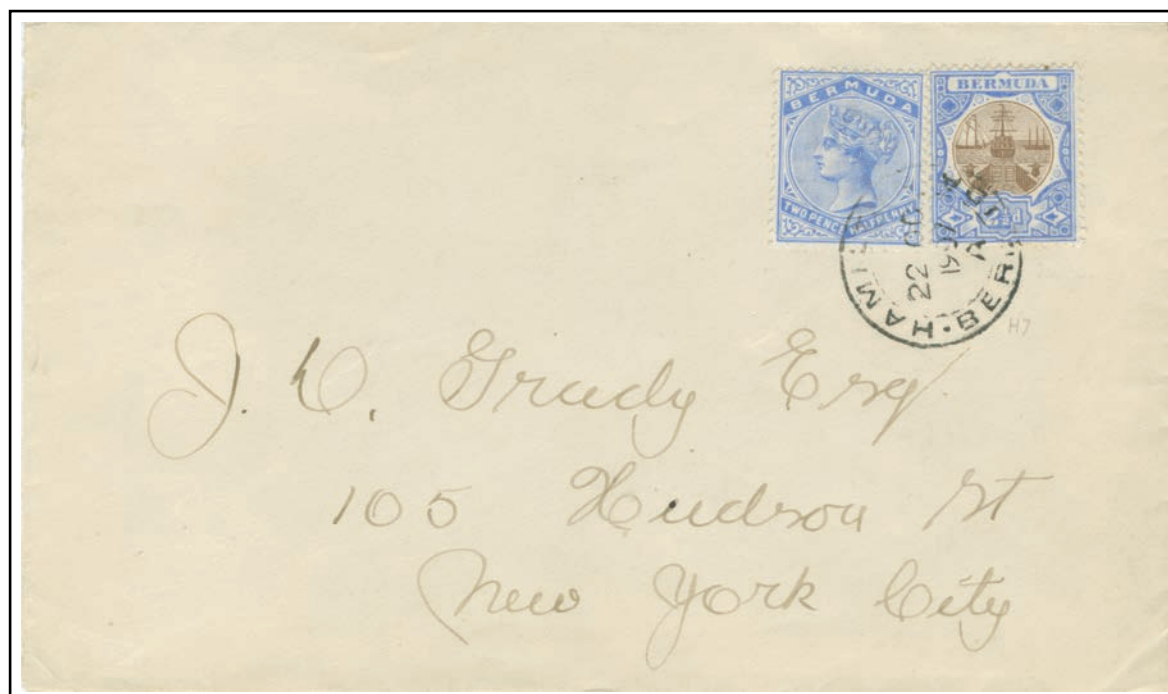
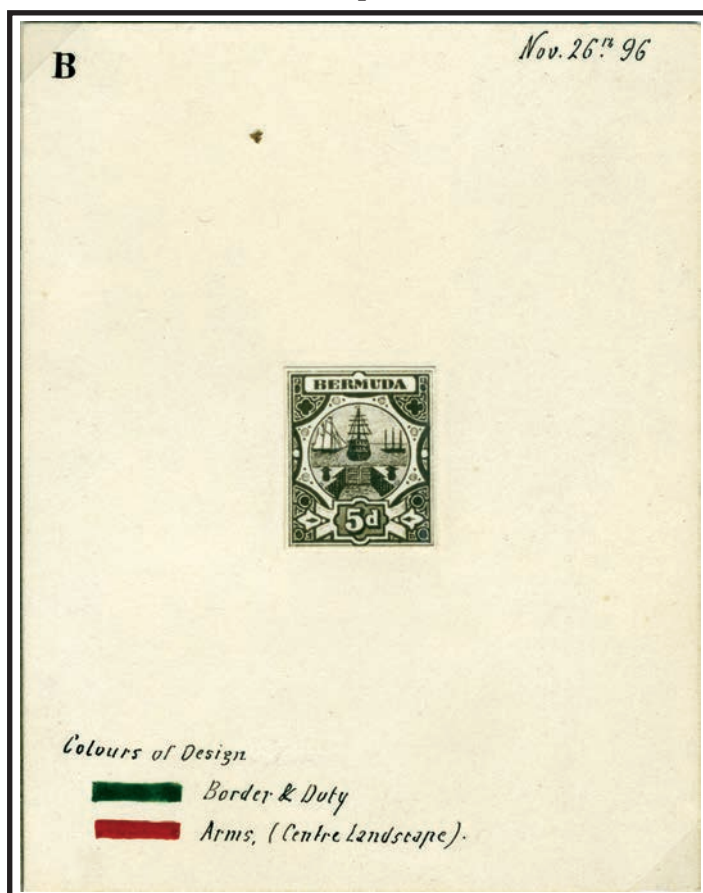
The one farthing stamp was made for local newspaper delivery; however no such usage has been recorded, as a postal stationery wrapper with this value was used instead.

The first consignment of 1,000 sheets of these stamps were placed on sale on 11 January 1901 and were completely bought by speculators within 24 hours.

Epilogue

There was a need for a 5d value for double rate and supplemental rate mail to the United States. Therefore, on October 22, 1896 the Colonial Secretary requested the printers De la Rue & Co. and the Crown Agents to prepare a 5d value in a new design. De la Rue prepared two essays, using the central design of the great seal of Bermuda. This design was taken from woodcuts provided by the Crown Agents. The second essay was approved on August 8, 1901 and De la Rue was instructed to prepare plates for 1d stamps and ¼d newspaper wrappers. On December 19, 1901, it was decided to use this design for other values as and when required.

Composite Essay "B", approved on August 8, 1901 (the approval received on September 3, 1901)



The Queen Victoria stamps continued to be used concurrently with the Dock Issue throughout the 1900s.