

# BERMUDA POST OFFICES



An In-Depth Collecting Journey

Dave Robinson, member APS and Bermuda Collector's Society



## Post Office Locations Past & Present



Hamilton (★GPO, ★Perot, Docks, Airmail GPO)

St. George's (★Town / West)

Ireland Island

★Mangrove Bay

Paget (East/West)

★Warwick (East/West)

★Southampton (East/West)

Somerset Bridge

Bailey's Bay

★Crawl

Harrington Sound

★Flatts

Devonshire (North/★South)

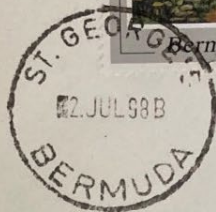
St. David's

Pembroke (West/North)

Paquetbot

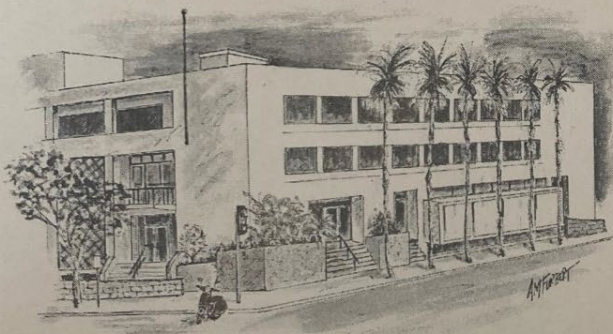


ANDREW FURBERT



ST. GEORGE'S POST OFFICE  
BERMUDA

ANDREW FURBERT



1C  
1C  
1C  
1C  
1C

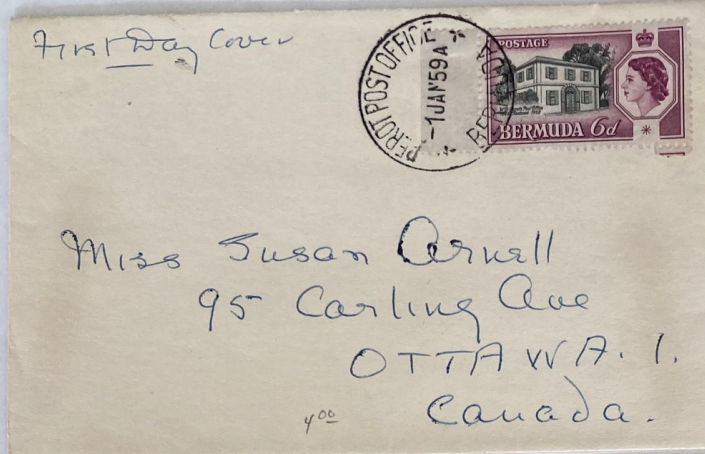


GENERAL POST OFFICE  
BERMUDA

## My Visits to the Active Post Offices

In 1998, for our 10<sup>th</sup> Wedding Anniversary we visited Bermuda. I took the opportunity to visit every post office in the Islands and obtain a cancel. After completing my quest, I was able to get Andrew Furbert, the Post Office employee who designed the Post Office set of envelopes, to sign each one. This started my interest in collecting examples of individual post offices. I'd like to share this journey with you in pictures. I hope that this gives you a glimpse of the possibilities of collecting Bermuda stamps!





## Perot Post Office

William Bennet Perot was Hamilton's postmaster from 1819 to 1862. The Post Office was built in 1842 as an annex to the main house, named Par-la-Ville. It served as Hamilton's post office until 1869. In 1959, to mark the 350<sup>th</sup> anniversary of the founding of Bermuda, the annex was restored and reopened as a post office. In October 2018 the Perot Post Office was closed for renovations to accommodate the Philatelic Bureau.







## Hamilton

In 1869 the Post Office in Hamilton was moved from the Perot House on Queen Street to a site on Parliament Street. The Headquarters of the Postal Department were transferred from St. George's to Hamilton in 1879. It was officially designated the General Post Office (GPO) from 1900. The current GPO building on Church Street is from 1967.



# Hamilton – Auxiliary Sites

Additional sites include Parcel Post, Registration, Paquebot, Airmail GPO, IDE, and Docks Hamilton. Docks Hamilton, located at number 1 Dock at the foot of Queen Street in Hamilton, was a branch post office for the convenience of ship passengers and crew that was established in 1933 and closed in 1939. Typical usage would be double rate postage.







## St. George's

Located on Water Street, it was the headquarters of the Postal Department until it transferred to Hamilton in 1879. The building was originally built in 1622 and rebuilt in 1760 and is on the list of historic and heritage buildings of Bermuda. Originally built as a Jail and then became the residence of Bermuda's Police Chief before becoming the Post Office.





POST CARD  
BERMUDA



Just a few lines  
from us in our  
warm sunny home  
With greetings  
R. V. W.

Miss Hatch  
Morris Plains  
New Jersey  
U. S. A.

## St. Georges West

Opened in 1866 as a receiving office known as 'Ferry Road' until 1882, Reopened as a sub-Post Office in 1887 and permanently closed in 1934.



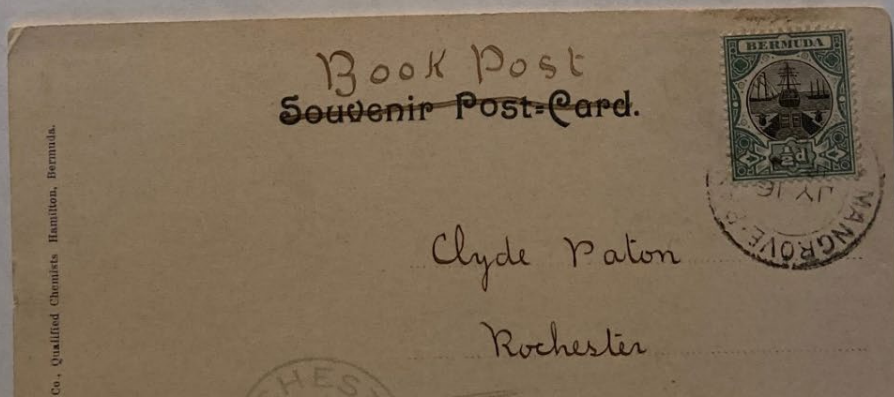
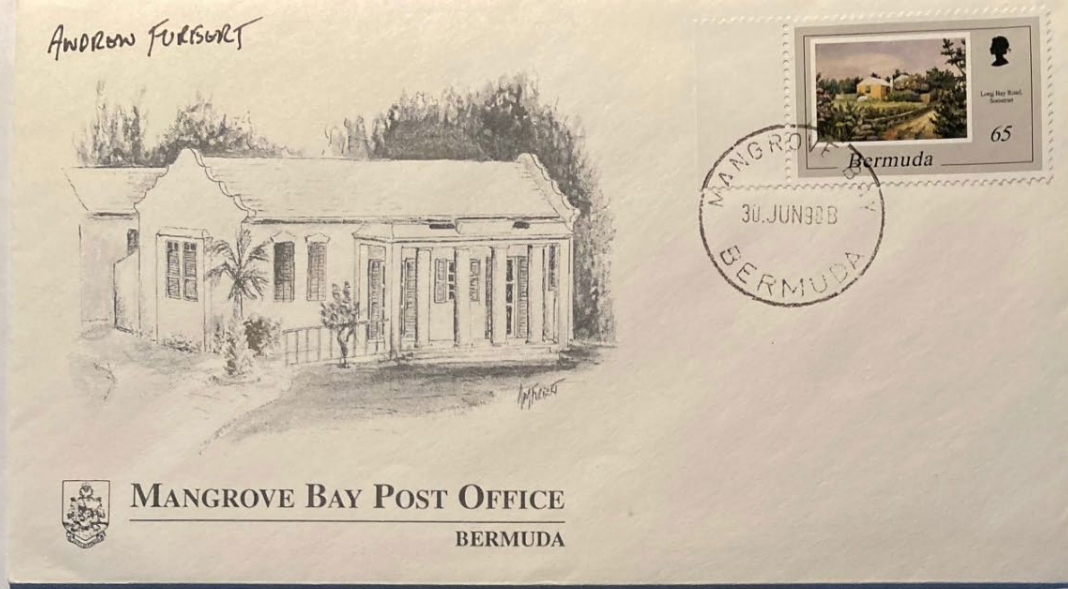




## Ireland Island – Naval Dockyard

The Ireland Island Post Office started as a British Naval Post Office from 1845 – 1859, when the colonial government took over. It became a full Post Office in 1865 and closed in 1951. On September 1, 2014 the Bermuda Post Office opened a small office for the convenience of cruise ship passengers as they docked at the Shipyard.



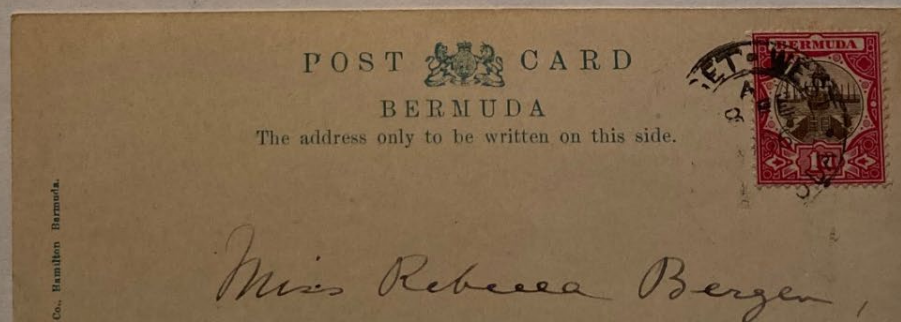
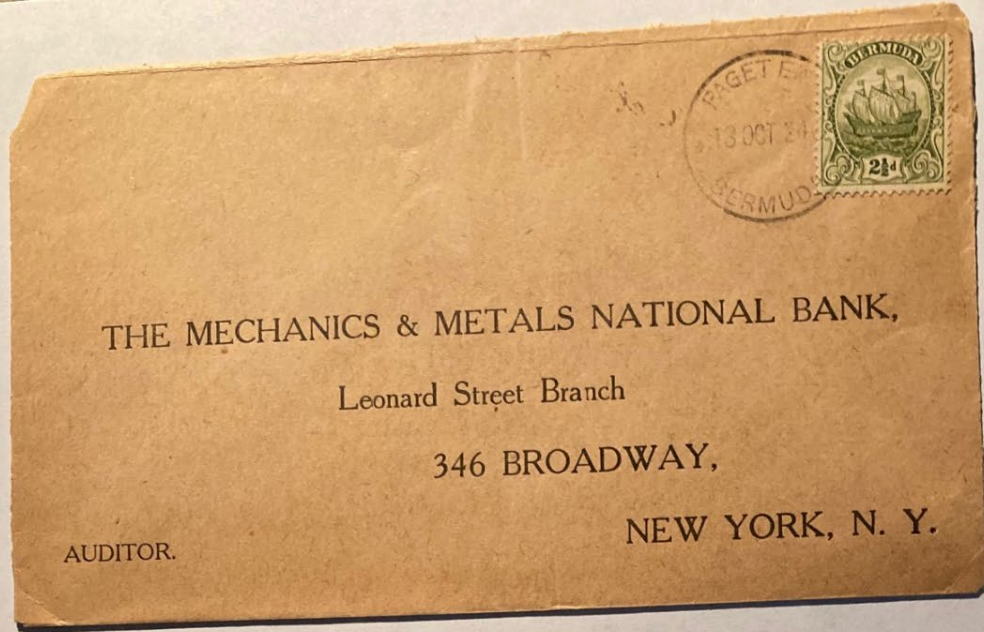


## Mangrove Bay

The Mangrove Bay sub-post Office opened in 1844. The location of the post office moved in 1905 and moved to its current location in 1996.



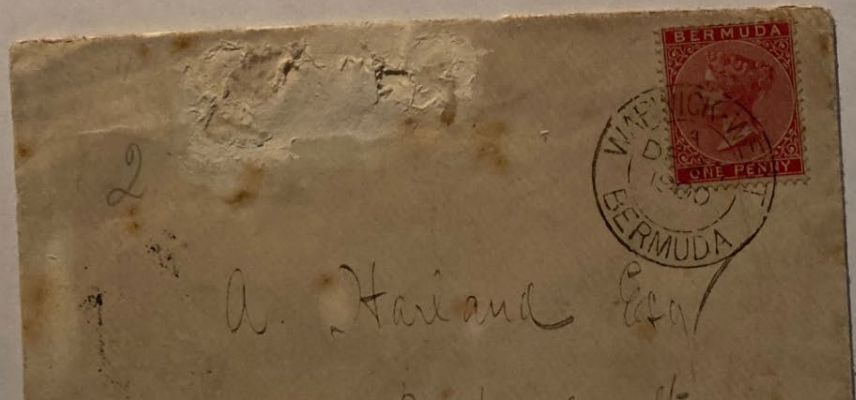
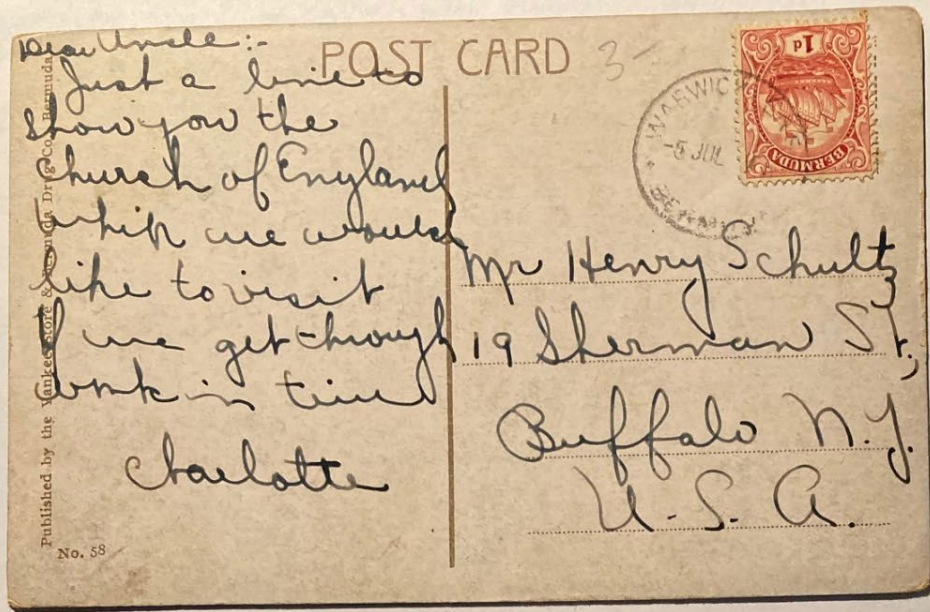




## Paget (East / West)

The Paget East & West receiving Offices were established in 1858. In 1932 the East Post Office was closed and the West Post Office became Paget. The Post Office closed in 2015.



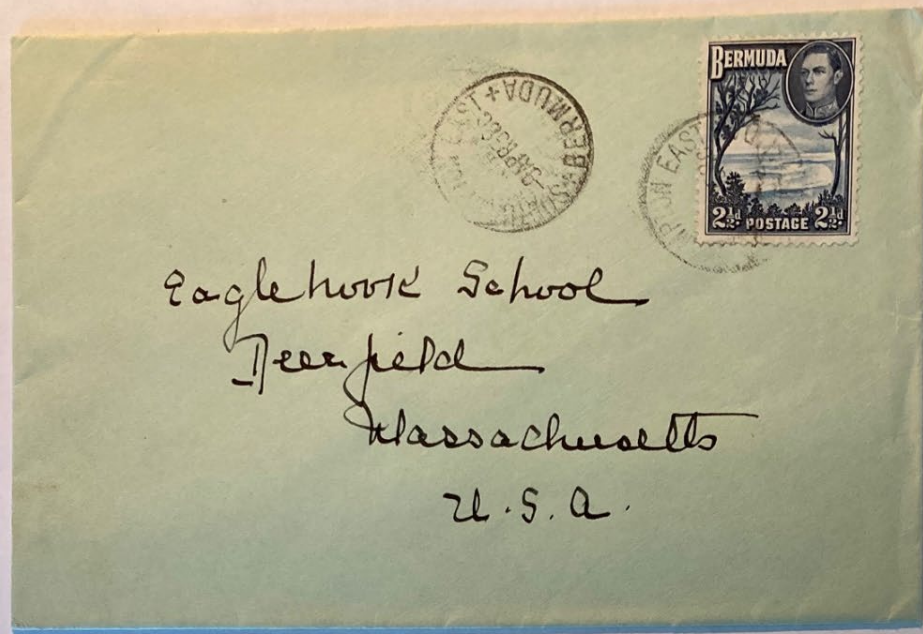


## Warwick (East / West)

Warwick West was established as a receiving office at Riddell's Bay in 1844. The office was closed in 1938. Warwick East was established as a receiving office in 1882 and became the Warwick Post Office in 1938. The current Post Office was opened in June 1980.







## Southampton (East / West)

Southampton East was established as a receiving office at Hunt's Bay in 1844. The office was closed in 1941. Southampton West was opened as a receiving office in 1850 and became the Southampton Post Office in 1941. Major renovations to this location took place in 1980. The Post Office is located on Church Road.





## Somerset Bridge

Somerset Bridge was established as a receiving office in 1844. The Receiving House was destroyed by fire in June 1869. The final location of the Post Office was open from 1906 until its closure in November 2014.







## Bailey's Bay

Bailey's Bay was established as a receiving office in 1844. In April 1944 the location was changed to a location at the intersection of Wilkinson Ave and Blue Hole Hill. The office was closed in December 2010.



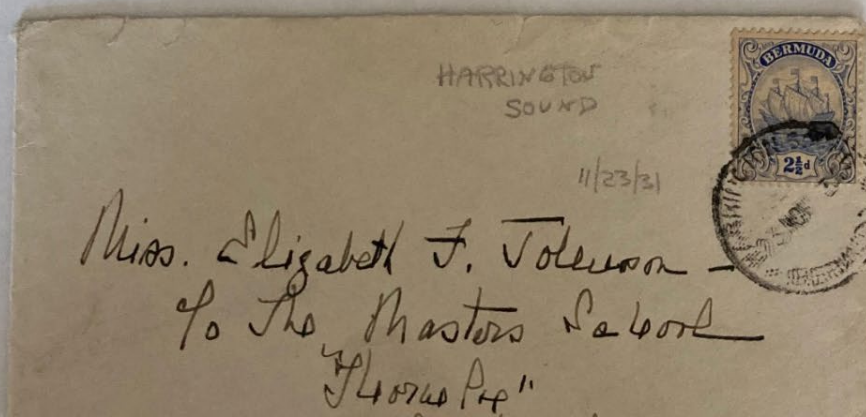
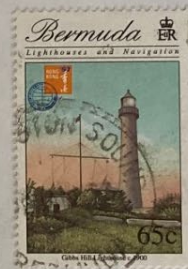


# Crawl

Crawl was established as a receiving office in 1859. Crawl was designated as a sub-Post Office in 1900. The Post office moved to its current location on Radnor Road in 1980.







## Harrington Sound

Harrington Sound was established as a receiving office in 1854 and designated as a sub-Post Office in 1900. The last location of the Post Office opened in 1932 and closed in November 2014.





## Flatts

Flatts was established as a receiving office originally from 1814 – 1817 and re-established in 1844 and designated as a sub-Post Office in 1900. The Post Office, located on Middle Road, has been in the same building since 1935.

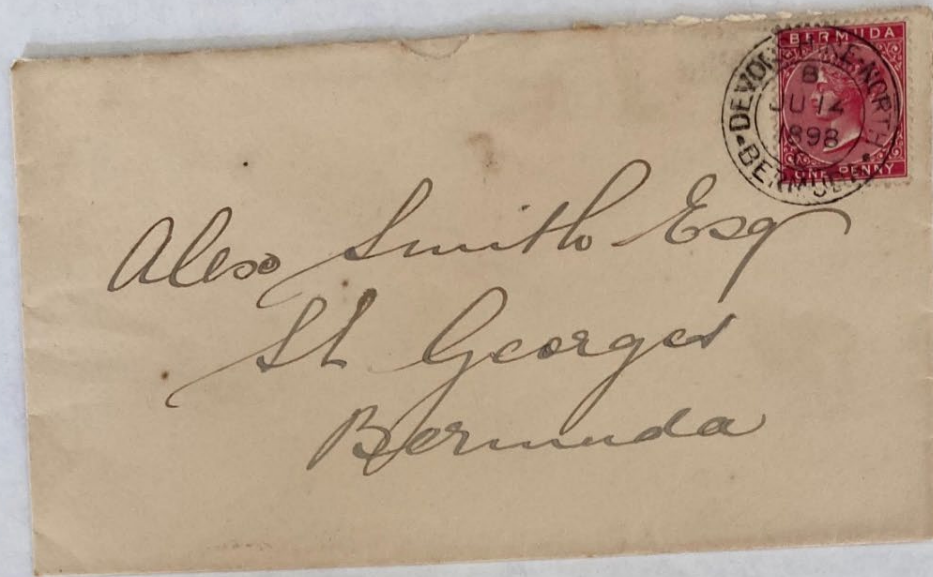




## Devonshire (North / South)

Devonshire North was established as a receiving office in 1854 and became a de facto branch of Devonshire South starting in 1882. The North office was officially closed in 1896; however an office for the sale of stamps and posting of letters was maintained until 1955.

Devonshire South was established as a receiving office in 1882 and designated as a sub-Post Office in 1900. The Post Office is located on Orange Valley Road and has been at this location since 1971.





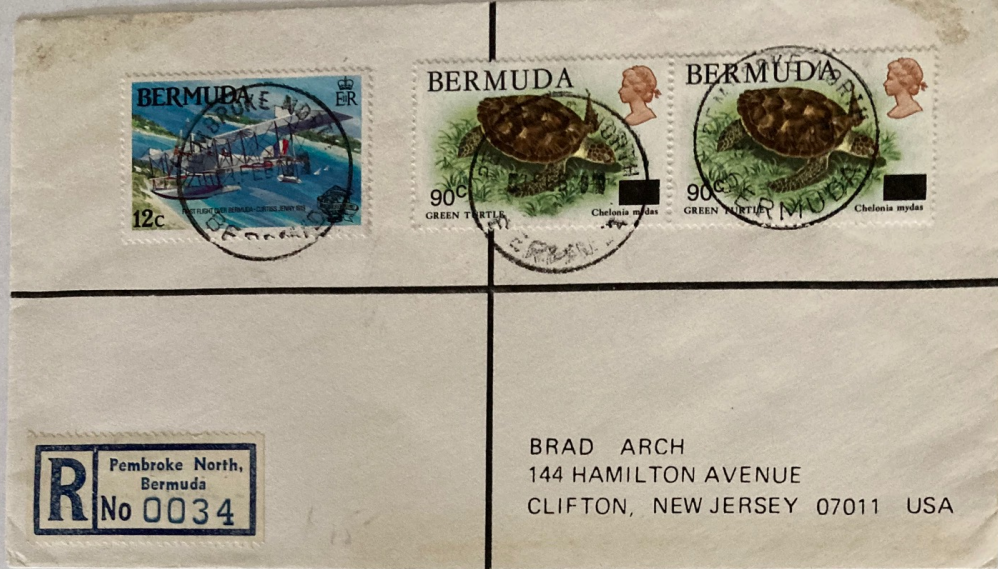
## St. David's Island

St. David's Island was established as a receiving office in 1886 and designated as a sub-Post Office in 1900. In 1934 the office was closed.

A new post office was opened in 1974 handling both local mail as well as the mail of the U.S. military until closure of the bases in 1995 and the closure of the NASA tracking station in 1998. The Post Office was closed in November 2014.







## Pembroke (North / West)

Pembroke West was established as a receiving office in 1894 and closed in 1904. Pembroke North opened as a sub-Post Office in 1967 and was closed in the mid-1990's.







## Paquebot

UPU Regulations require that mail posted on a ship travelling on the high seas be franked with the postage stamps of the ship's registry, or if at anchor in a port-of-call, mail must be franked with the postage stamps of the host country. Bermuda Paquebot markings are known from 1902.





## Bermuda

### KGVI & KGVI Town Cancels



Airmail



Aquarium



Bailey's Bay



Bailey's Bay



Christmas



Crawl



Crawl



Devonshire North



Devonshire South



Devonshire South



Docks



Flatts



Hamilton



Hamilton



Hamilton



Hamilton Machine

## Pursuit of Collections

- Post offices within an individual issue
- Machine Cancellations
- Registration Labels
- Auxiliary Markings
- Censor Covers
- NASA Covers
- Charity Seal Covers
- Air Covers
- Ship Covers
- OHMS Covers
- ... Endless Opportunities!



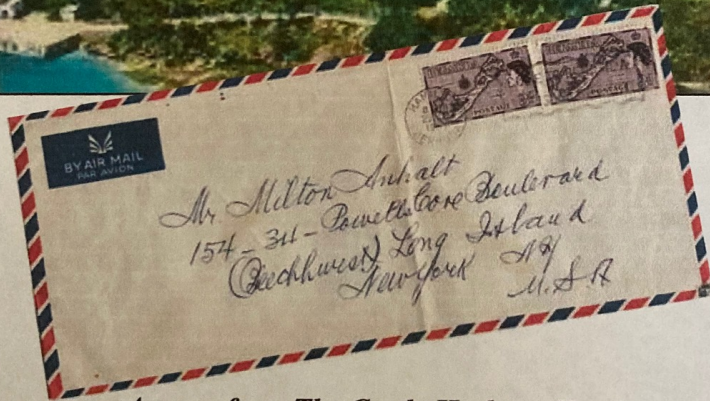


# BERMUDA POST

Vol. 35, No. 3

July - September 2021

Whole No. 139



*A cover from The Castle Harbour Hotel  
has a story. See page 4.*

## BERMUDA COLLECTORS SOCIETY

An affiliate of the American Philatelic Society

[www.BermudaCollectorsSociety.com](http://www.BermudaCollectorsSociety.com)

ISSN: 1046-2813



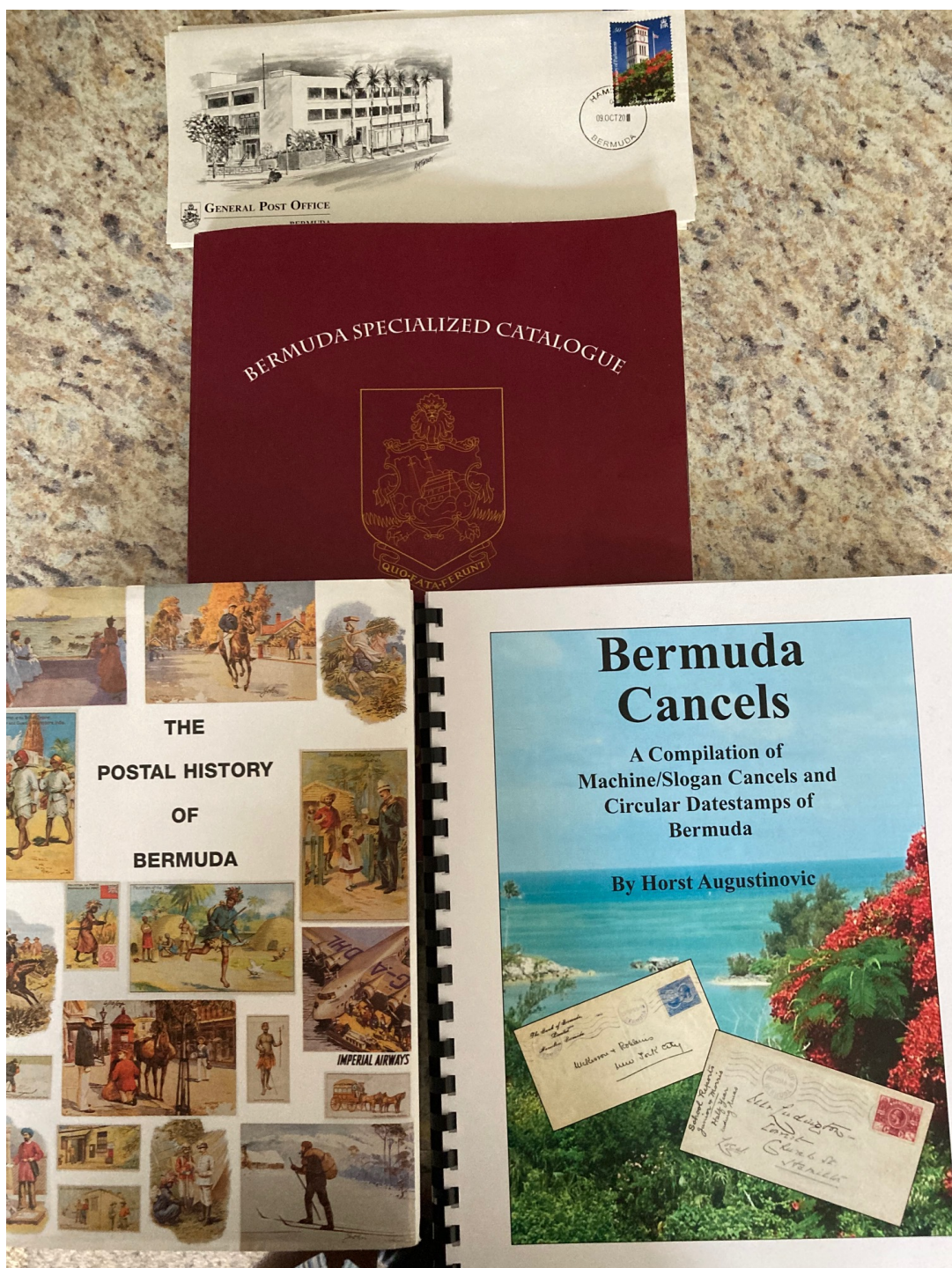
## Interested in Collecting Bermuda?

The Bermuda Collectors Society is available to collectors who want to learn more about collecting this fascinating Commonwealth country.

[www.BermudaCollectorsSociety.com](http://www.BermudaCollectorsSociety.com)







# References

Bermuda Specialized Catalogue; David Cordon and Michael Forand;  
ISBN 978-0-615-69303-3; 2012

The Postal History of Bermuda; Edward B. Proud; ISBN 1-872465-293;  
2003

Bermuda Cancells – A Compilation of Machine/Slogan Cancells and  
Circular Datestamps of Bermuda; Horst Augustinovic; ISBN 978-0-  
947481-96-4; 2020

The Bermuda Post Office and the Handling of Mail; Horst Augustinovic;  
ISBN 978-0-947482-36-7; 2022

Bermuda Government website: [www.gov.bm/post-office-locations](http://www.gov.bm/post-office-locations)

