

## Development of the Bermuda Dock Issue

**This exhibit will follow the development of the Bermuda Dock Issue.**

This was the first issuance of stamps in the British Empire that did not include the Monarch's head. These stamps were issued between November 1902 and February 1910 in 7 different values from, ¼d to 4d, and over three different watermarks.



KEVII Great Seal of Bermuda

The badge shows a three deck ship at the entrance of a dock with gates. These gates were to allow the ship to be loaded and unloaded without being affected by tides. In the background are two other ships, one being a schooner under sail. Bermuda was the first of a number of colonies, mostly in the West Indies, to adopt a design incorporating the badge or arms of the colony instead of the King's head during the reign of King Edward VII

Although there were quite a large number of stamps printed, there are only 18 different stamps by value, watermark and printing and with little or no flaws! In addition, both the 3d and 4d values were rarely used, as there was no legitimate ratings for those values. For the ¼d, postal stationery wrappers had been printed for newspapers, which negated the need of the stamps, and in fact there is no recorded usage of a ¼d stamp on a plain newspaper wrapper.

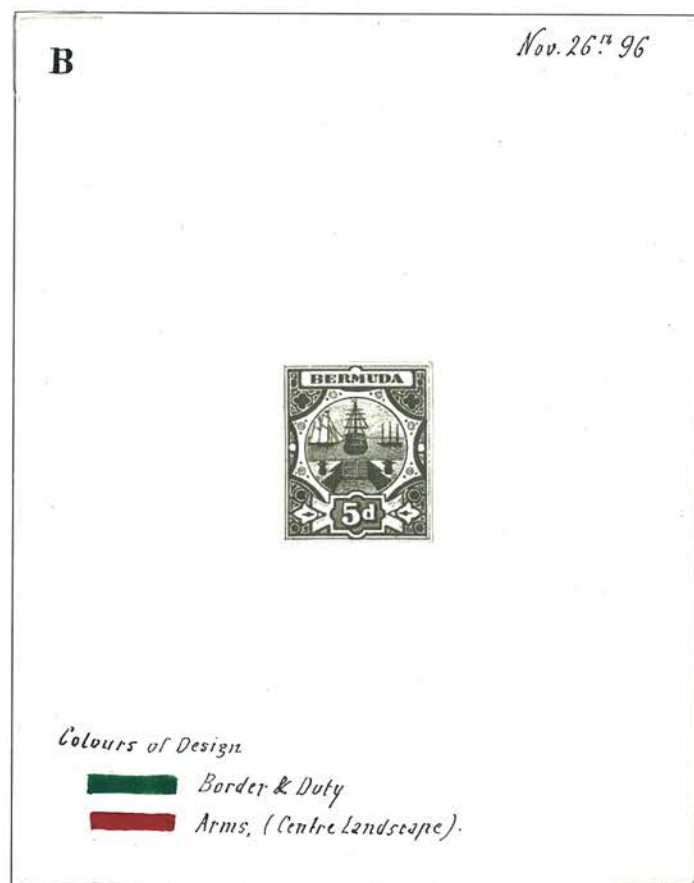
Of note are the essays, which were originally produced for a new 5d value in the reign of Queen Victoria, with the second example being approved for the Dock issue and 10 color trials with plate number.

## The Two Unique Essays

There was a need for a 5d value for double rate and supplemental rate mail to the United States, therefore, on October 22, 1896 the Colonial Secretary requested the printers De La Rue & Co and the Crown Agents to prepare a 5d value in a new design. De La Rue prepared two essays using the central design of the great seal of Bermuda. This design was taken from woodcuts provided by the Crown Agents. The second essay was approved on August 8, 1901 and De La Rue was instructed to prepare plates for 1d stamps and ¼ d newspaper wrappers. On December 19, 1901, it was decided to use this design for other values as and when required.



Composite Essay "A", not approved



Composite Essay "B", approved on August 8, 1901 (the approval received on September 3, 1901)

The two unique essays that prepared for the Dock Issue

## MASTER DIE PROOF (Essay)

The Master Die Proof includes both the center part of the stamp (vignette) and the frame before the value was added. However, these examples are considered “essays” as changes were subsequently made to the design, as illustrated below.



Engravers copy



Master



Vignette



Master



Vignette



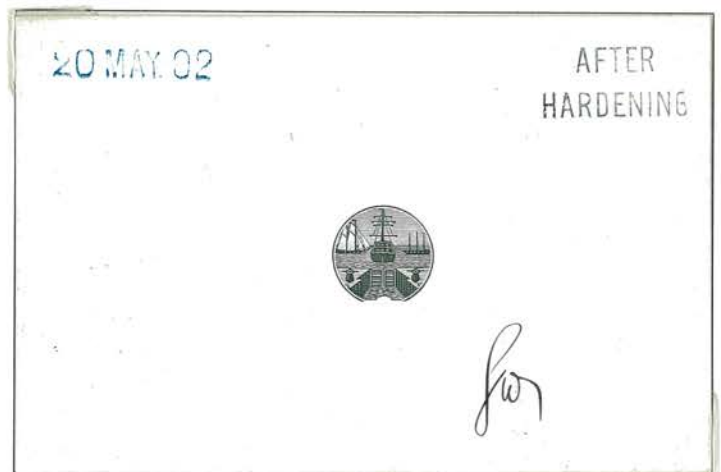
Master



Vignette

The illustrations above show the changes from the Master Die Proof before the acceptance of the final design, and that of the final design shown in the Die Proof of the Vignettes below. The changes are as follows: the lines for the water are thinner, the lines in the sails are shorter, the portholes in both ships are squarer, and the rings below the bollards have been made thicker.

## DIE PROOF - VIGNETTE



The die was initially printed “before hardening” to ensure no changes were required. The die was then hardened to be used in transferring the design to the printing plates. The “after hardening” proof was to check that the die proof did not crack in the hardening process, as this process involved heating and then cooling the die.

## COLOUR TRIALS

The colour trials were printed on gummed and watermarked Crown and CA paper in strips of six, with margins at the top and bottom. The lines of colour on the edge of the plates were added to prevent damage from the pressure of the inking roller to the printing plate and were known as the Jubilee line. The line was printed in the color of the frame, a single plate number was printed in the color of the vignette.

Colour trials, which were prepared only for the 1d value, were submitted in approximately 50 different combinations. Most examples are known without margins.



azure & gray

The pencil notations are by De La Rue, referencing colors they used on other stamps.



carmine & ultramarine



carmine & purple



carmine & red-brown



carmine & bistre

### Colour Trial in the colours of the issued ½d stamp

black & green



Line perf 14"

## COLOR TRIALS

Printed on gummed and watermarked Crown and CA paper.  
The Jubilee lines are in the color of the frame, the plate number is in the color of the vignette.



gray &  
purple



gray &  
ultramarine



gray &  
bistre



carmine &  
dark brown



azure &  
red brown



azure &  
ultramarine



red &  
orange



brown &  
chestnut



brown &  
chocolate



brown &  
yellow-brown

20 examples are recorded with plate numbers  
Ex-Ludington

May 30<sup>th</sup> 1902.  
Bermuda  
Reg. 82/1901.

# Appendix

another colour } see below  
selected

1d  
4



Approved  
LHM

## APPENDIX SHEET

Appendix Sheets were produced with a number of the colour trials and submitted for approval of the colour for the various values. This sheet bears fourteen examples of the colour trials with approval for the colours for the 1/4d, 1d and 3d values. Ex De La Rue archives.

1d



Approved

LHM

App<sup>n</sup> for 1/4d  
(5<sup>th</sup>) W. H. D. M.  
14.7.05



3d



Approved

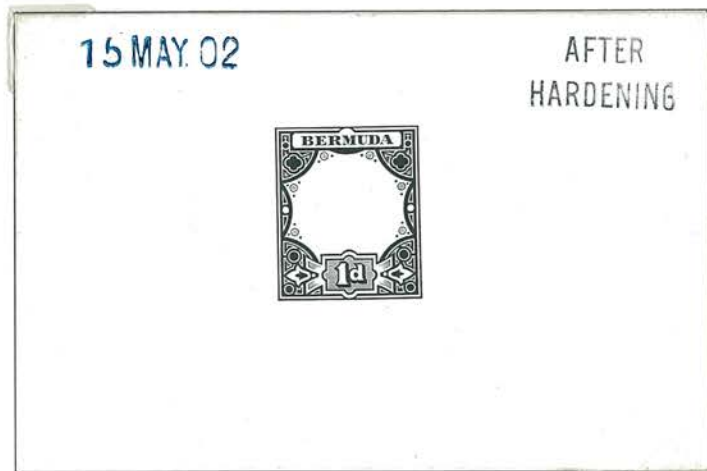
31/5/12  
A.G.

**DIE PROOFS**  
**FRAMES OF ORIGINAL VALUES**



Produced to see if changes  
to the design are required

Note: there are two different  
frame designs. The frames  
for values up to 1d have no  
dot in the circle in the middle  
of the left and right sides of  
the frame. The higher values  
have a dot, as can be seen on  
the 3d value.



To check the die did not crack during hardening



Produced to see if changes  
to the design were required

## WATERMARK – CROWN & CA

The first issue consisted of three values which were surface-printed by De La Rue on Crown over CA watermarked paper. All values were perforated 14.

The 1d value was printed in sheets of 120 consisting of 2 panes of 60 stamps. The ½d and 3d pence values were printed in sheets of 240 in 4 panes of 60.

### SPECIMEN OVERPRINT

(Samuel type D 12)



black &  
green



brown &  
carmine



aniline magenta  
& sage-green

### PRINTINGS



black &  
green

Dec 1902  
361,440



brown &  
carmine

Nov 1902  
120,000



brown &  
carmine

?  
608,160



brown & bright  
aniline carmine

?  
1,447,680



aniline magenta  
& sage-green

Sep 1903  
26,160



magenta &  
sage-green

?  
48,000

### VARIETY



Damage to value tablet

Mail Rates - In December 1898, Bermuda joined the Empire Penny Post Scheme which meant that mail to most of the British Empire was sent at a rate of 1d, mail to the USA and other UPU countries at 2½d. A fee of 2d was charged for registered mail, local postcards were sent at ½d, overseas postcards at 1d, and newspapers at ¼d for local and 1d for overseas addresses..



FIRST ISSUE

ITEMS

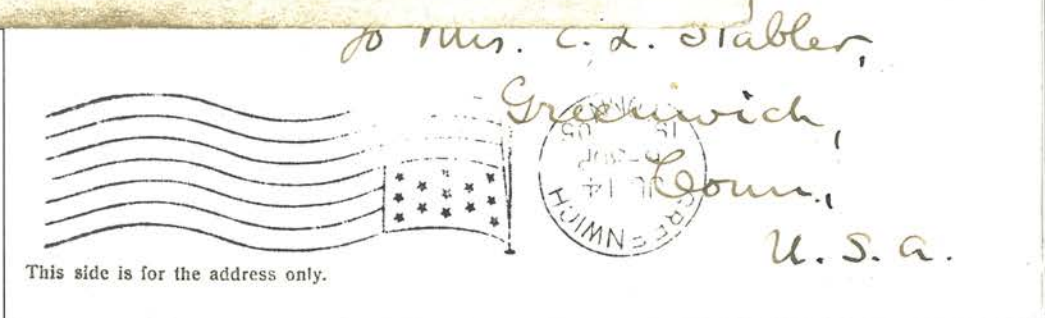


March 22, 1903 registered cover with two Queen Victoria 1/2d stamps paying the 1d Empire rate and two of the first issue 1d Docks issue paying the 2d registration fee.

Note: the 1/2d Docks Issue was not available until December 1903.



Two postcards paying the 1d postcard rate to the USA

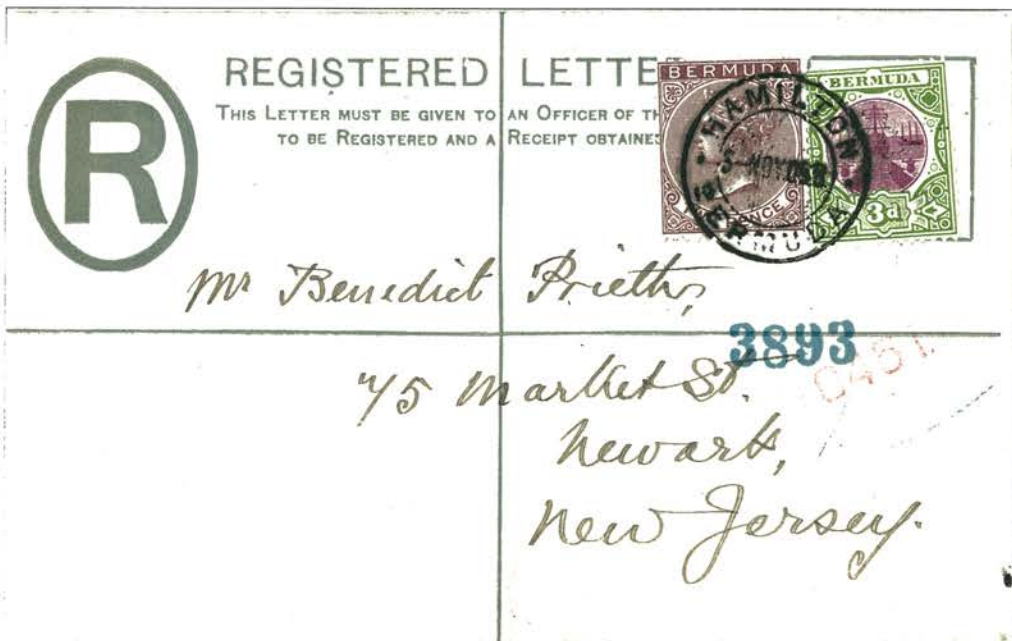


This side is for the address only.

FIRST ISSUE

ITEMS

Envelope to London with 1d paying the Imperial Penny Postage rate. Upon arrival re-addressed to Rome with addition of UK 1½d for total of 2½ d paying the UPU rate to foreign countries.



70% reproduction of the Dock indicium showing the 2d registration rate.

Docks Issue 2d Registered envelope, with 5d added on the address side, including a Dock Issue 3d stamp, to pay for the double the 2½d rate to USA.

## NEW WATERMARK

During 1904 the watermark for British Colonial stamps was changed to Multiple Crown and CA, but the Bermuda stamps with the new watermark did not appear until 1906. The 3d value was not needed for regular postage and this value was not printed in any of the later issues.

### EXISTING VALUES



black &  
green

Dec 1906  
365,280



brown &  
carmine

April 1906  
1,483,920



Inverted wmk



Image of  
inverted crown  
from reverse



Note: the Jubilee lines are in the color of the frame and the plate number in the color of the vignette. The stamps were printed in sheets of 240 in four panes of sixty; 10 rows of six columns. The plate numbers occur above stamp 2 in the upper left pane, above stamp 5 in the upper right pane, and below stamp 56 in the lower left pane and stamp 59 in the lower right pane.



## NEW WATERMARK

In addition to the ½d and 1d, four new values were printed on the Multiple Crown and CA watermarked paper.

### DIE PROOFS



Note: the Die Proofs for the ¼d had been prepared in 1902 for newspaper wrappers, however due to the overabundance of the Queen Victoria ¼d stamps the Dock stamp with this value was not printed until 1908.

### SPECIMEN OVERPRINT

(Samuel type D 12)



brown & violet



grey & orange



brown & ultramarine



blue & chocolate



brown & violet

Sept 1908  
368,640



grey & orange

Oct 1907  
70,560



brown & ultramarine

Dec 1906  
489,120



blue & chocolate

Dec. 1909  
72,000

# NEW WATERMARK

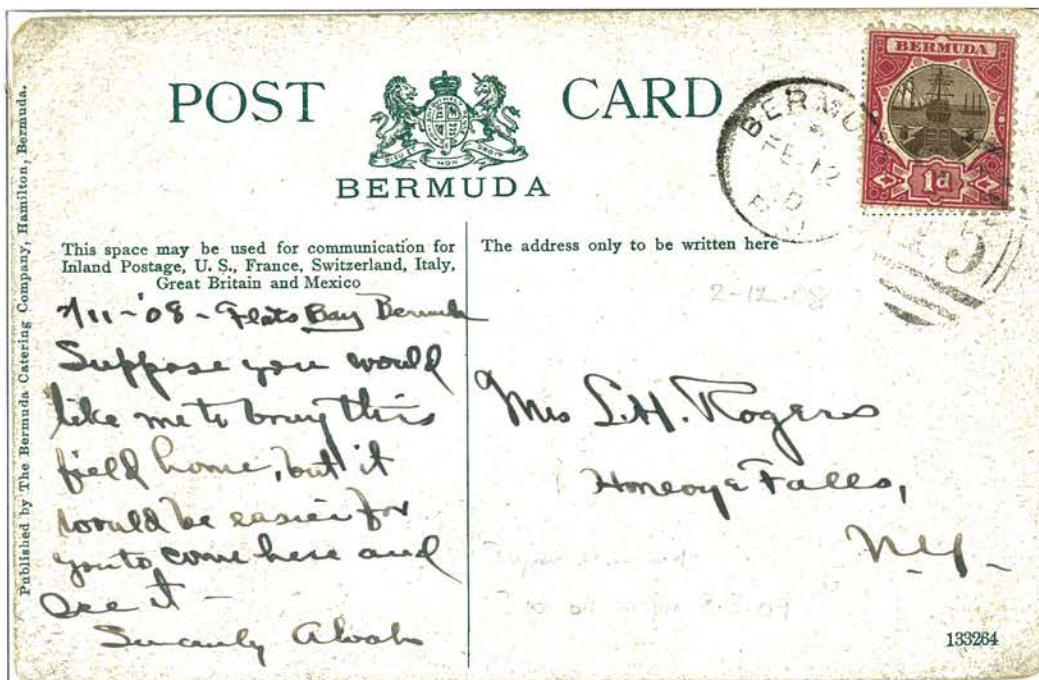
## ITEMS

Newspaper ¼d wrapper



The ¼d stamp was intended to be used for newspaper wrappers, however Bermuda issued pre-printed wrappers for this purpose. The printed ¼d wrapper above has been up-rated with three ¼d dock stamps to pay the 1d newspaper rate to the UK.

## Commercial Picture Postcard



1d postcard rate to USA from post office at Flatts. The duplex cancellation is from the device used to cancel mail in the late 1890s. It was used for a short period in 1910 after a fire at the post office destroyed the current circular date stamp. This is the latest recorded usage of 10 February 1910. Fewer than 10 covers/postcards have been recorded with this late usage of the duplex cancel

NEW WATERMARK

COVERS

Mr. Seth A. Borden,



2d Docks used with 1/2 d caravel paying 2 1/2 d single rate to USA

P.



Hans Appel. Esq  
Vienna

Austria

2 1/2d foreign rate to Austria



REGISTERED



Health Specialist Spraul

Trade Building 10761

Boston Mass

4d Docks and 1/2 d caravels paying 2 1/2d single rate plus 2d registration to USA.

## U.P.U. COLOURS

In 1907 the Bermuda Government decided to issue the ½d, 1d and the 2½d stamps in single colours as recommended for these values by the Universal Postal Union.

### SPECIMEN OVERPRINT



green



carmine



ultramarine



green

March 1909  
120,960



blue-green

?  
246,000



carmine

May 1908  
721,920



rose-carmine

?  
744,000



ultramarine

Febr. 1910  
488,640



deep ultramarine



blue-green



carmine



deep ultramarine

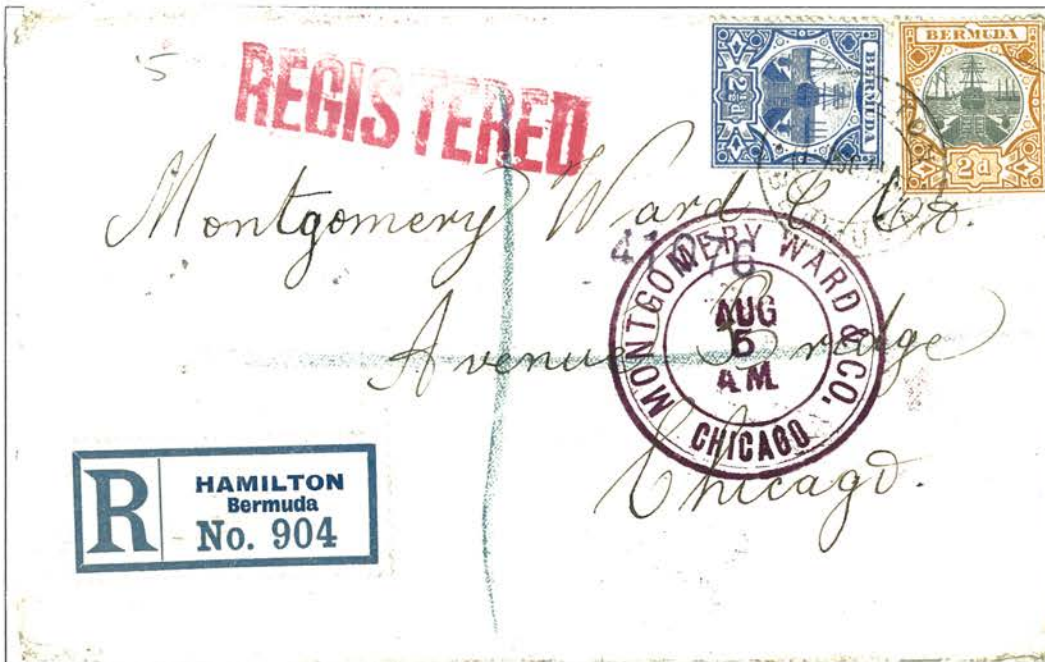
U.P.U.

ITEMS

Commercial Picture Postcard

Mail from "OCEANA". This ship was purchased in 1911 by the Bermuda North Atlantic Co from the Hamburg America Line and operated between New York and Bermuda. The official rate for a postcard was 1d, therefore overpaid with by the extra ¼ d and ½ d Dock stamps.

One of three recorded covers with this marking.



2½d Docks stamp in UPU colors paying the single rate to the USA; the 2d Docks stamp paying the 2d registration fee for a total of 4½d.